

## XTRARM XTR-LA2060-600

# XTRARM TiTon Double TV Wall Mount User Manual

Model: **XTR-LA2060-600** | Brand: **XTRARM**

## 1. INTRODUCTION

This manual provides detailed instructions for the safe and proper installation, operation, and maintenance of your XTRARM TiTon Double TV Wall Mount. Please read this manual thoroughly before installation and retain it for future reference. This wall mount is designed to securely hold televisions within specified weight and VESA compatibility limits, offering flexible viewing angles through its articulated arm, tilt, swivel, and rotation features.



*XTRARM TiTon Double TV Wall Mount installed in a modern living room with a large TV.*

## 2. SAFETY INFORMATION

---

**WARNING:** Failure to read and follow all instructions may result in personal injury, property damage, or voiding of your warranty. If you have any questions, please contact customer support.

- Ensure the mounting surface can safely support the combined weight of the mount and your television.
- Do not exceed the maximum weight capacity of **80 kg (176 lbs)**.
- Verify VESA compatibility with your television before installation.
- Use appropriate tools and follow all drilling and fastening instructions carefully.
- Installation should be performed by at least two people to prevent injury or damage.
- Keep children and pets away during installation.
- Regularly check all fasteners to ensure they remain secure.

## 3. PACKAGE CONTENTS

---

Please verify that all components are present and undamaged before beginning installation. If any parts

are missing or defective, contact XTRARM customer support.

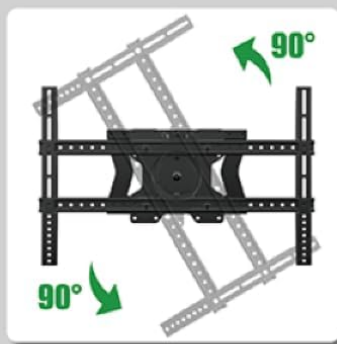
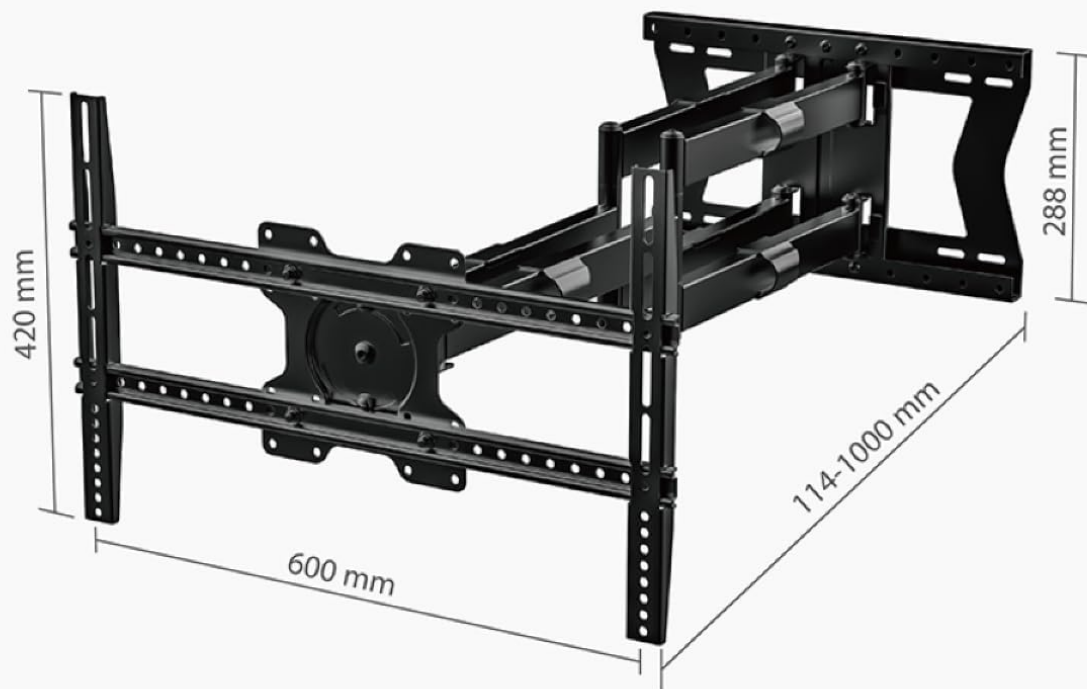
- XTRARM TiTon Double TV Wall Mount assembly
- Mounting hardware kit (screws, anchors, washers for various wall types and TV models)
- Installation template
- Mini bubble level
- User Manual

#### 4. SPECIFICATIONS

Model Number	XTR-LA2060-600
Material	Metal
Color	Black
Maximum TV Size	Up to 110 inches
Minimum TV Size	45 inches
Maximum Weight Capacity	80 kg (176 lbs)
VESA Compatibility	100x100, 100x200, 200x100, 200x200, 200x300, 300x200, 300x300, 400x200, 400x300, 400x400, 500x300, 600x200, 600x400
Arm Extension Length	11.4 cm (4.5 inches) to 100 cm (39.3 inches)
Tilt Angle	-5° to +15°
Swivel Angle	Up to 180° (depending on TV size)
Screen Rotation	±3° (level adjustment)
Compatible Devices	Samsung, Sony, LG, Panasonic, Philips, Sharp, and other TVs/Monitors/LCDs



Diagram showing TV size compatibility (45-110 inches), VESA patterns, and maximum weight capacity (80 kg).



*Detailed dimensions of the XTRARM TiTon Double TV Wall Mount, including arm length and VESA plate size.*



*Image highlighting the 100 cm extension arm of the TV wall mount.*

## 5. INSTALLATION GUIDE

---

Before starting, ensure you have all necessary tools (drill, stud finder, screwdriver, etc.) and understand your wall type. It is highly recommended to have two people for installation.

### 5.1. Wall Preparation

1. Locate wall studs (for wood stud walls) or ensure the concrete/brick wall is solid and free of obstructions.
2. Use the provided template to mark the drilling locations on the wall. Ensure the template is level using the included bubble level.
3. Drill pilot holes according to the instructions for your specific wall type (wood stud, concrete, brick).

### 5.2. Mounting the Wall Plate

1. Attach the wall plate to the wall using the appropriate screws and anchors from the hardware kit. Ensure all fasteners are tightened securely.

### 5.3. Attaching TV Brackets

1. Carefully place your TV face down on a soft, clean surface.
2. Attach the TV brackets to the back of your television using the correct VESA screws and spacers from the hardware kit. Ensure the brackets are centered and securely fastened.

#### **5.4. Mounting TV to Wall Plate**

1. With assistance, carefully lift the television and hook the TV brackets onto the wall plate.
2. Secure the TV to the wall plate using the safety screws or locking mechanisms as indicated in the detailed video instructions.

#### **5.5. Cable Management**

Route your cables through the integrated cable management clips on the mount arms to maintain a tidy appearance and prevent damage.

*Video demonstrating the complete installation process for the XTRARM TiTon Double TV Wall Mount.*

*Video showcasing the features and installation steps of the XTRARM TiTon TV Wall Mount.*

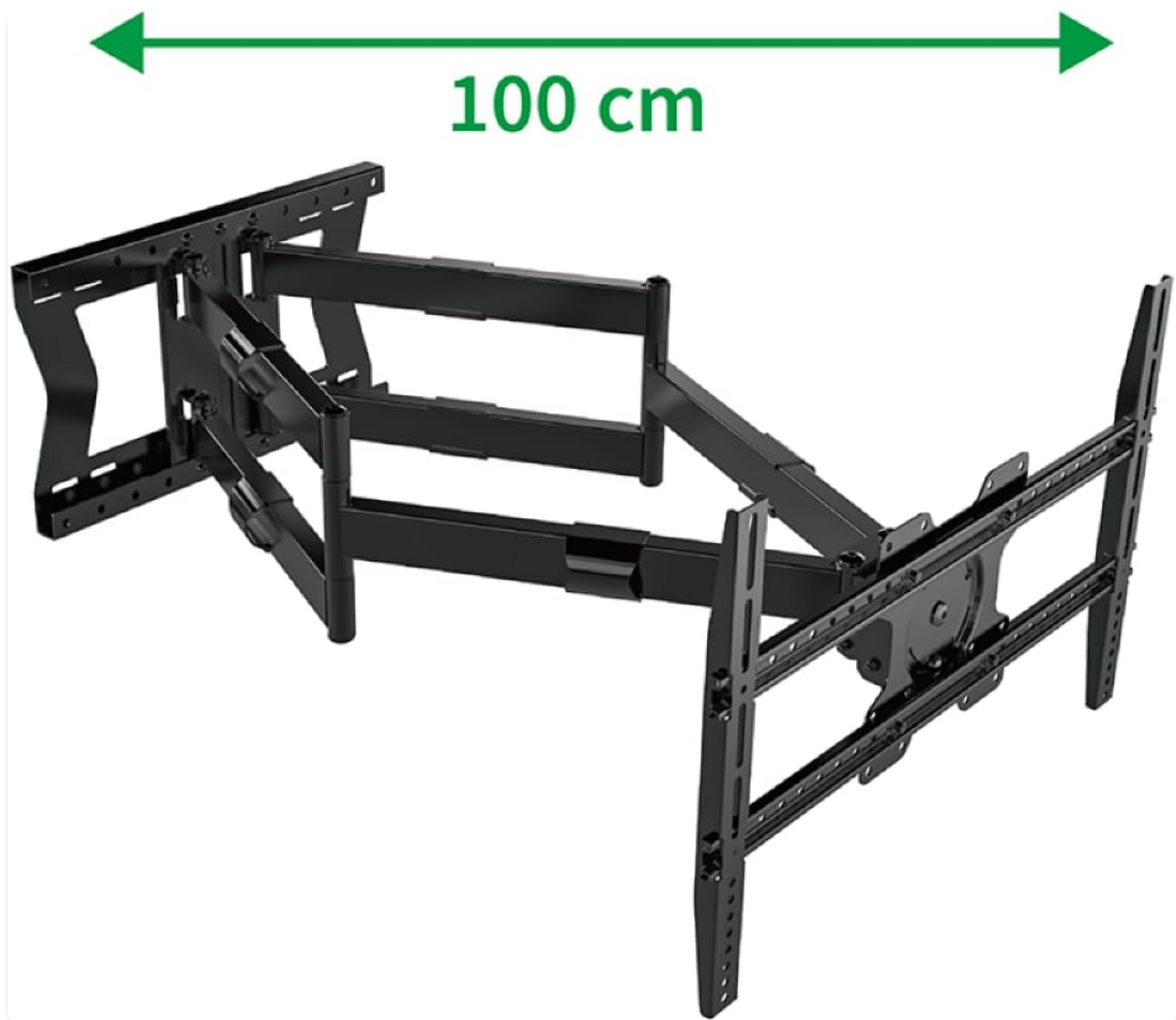
### **6. OPERATING INSTRUCTIONS**

---

The XTRARM TiTon Double TV Wall Mount offers multiple adjustment options for optimal viewing comfort.

#### **6.1. Extending and Retracting the Arm**

Gently pull or push the television to extend or retract the articulated arm. The arm can extend up to 100 cm (39.3 inches) from the wall.



*The XTRARM TiTon Double TV Wall Mount extended from the wall, illustrating its full articulation.*

## **6.2. Tilting the Screen**

The screen can be tilted from  $-5^{\circ}$  (downward) to  $+15^{\circ}$  (upward) to reduce glare and achieve the desired viewing angle. Loosen the tilt adjustment knobs, set the angle, and re-tighten to secure.



*Diagram showing the tilt adjustment range of the TV wall mount, from -5 to +15 degrees.*

### **6.3. Swiveling the Screen**

The mount allows for a swivel range of up to 180° (left to right), depending on your TV size and distance from the wall. Gently push the TV to the desired angle.

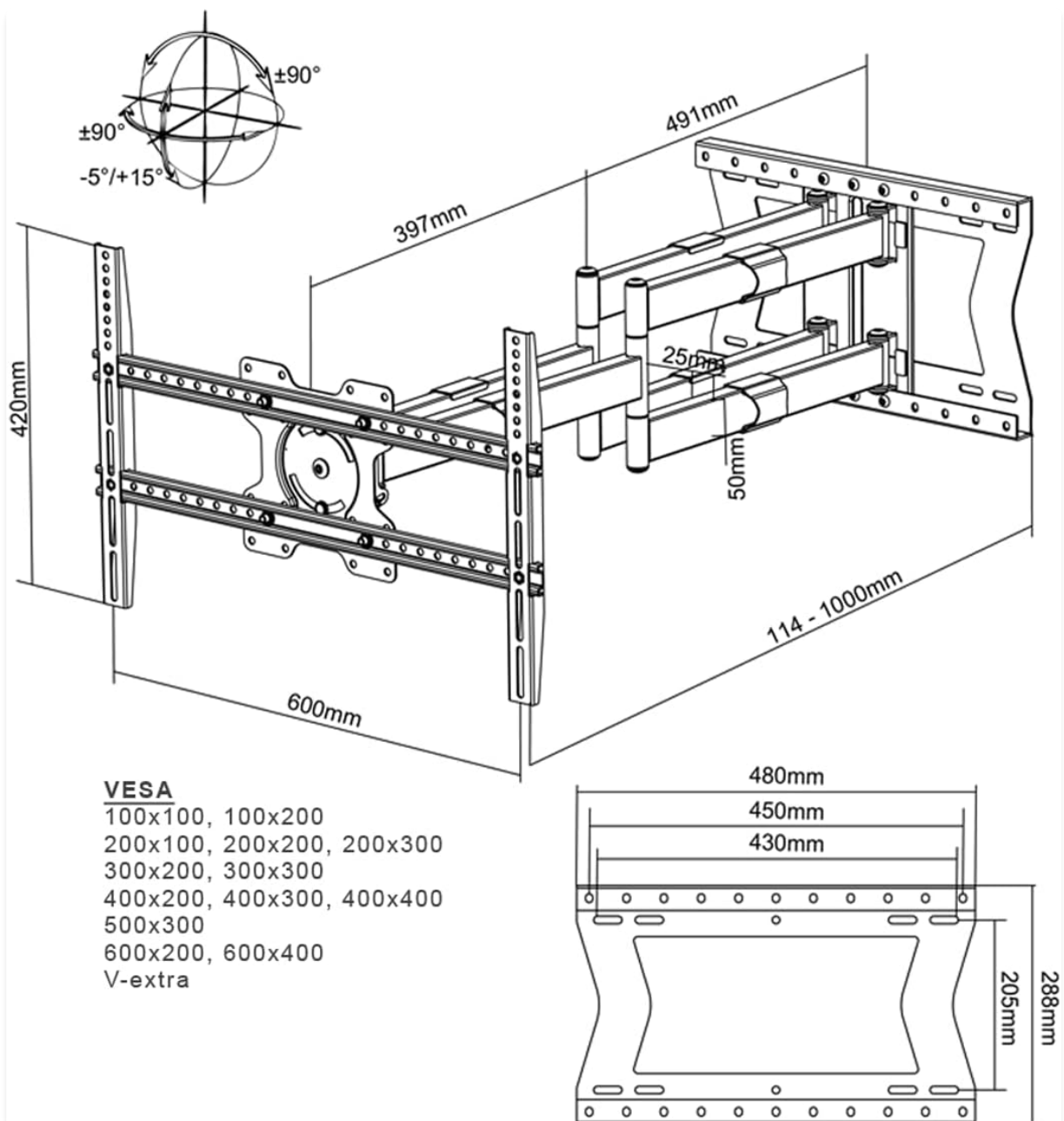


Diagram illustrating the 180-degree swivel capability of the TV wall mount.

#### 6.4. Screen Rotation (Level Adjustment)

The TV plate can be rotated  $\pm 3^\circ$  to ensure the screen is perfectly level after installation. Use the provided hex key to adjust the leveling screws, then tighten them to secure the position.



*Diagram showing the 90-degree rotation feature of the TV wall mount.*

## 7. MAINTENANCE

---

- **Cleaning:** Wipe the mount with a soft, dry cloth. Do not use abrasive cleaners or solvents.
- **Periodic Inspection:** Every few months, check all screws and bolts to ensure they are tight and secure. Re-tighten if necessary.
- **Lubrication:** The moving parts are designed for smooth operation and generally do not require lubrication. If movement becomes stiff, contact customer support.

## 8. TROUBLESHOOTING

---

- **TV is not level:** Use the screen rotation (level adjustment) feature as described in Section 6.4.
- **Mount feels loose:** Immediately check all wall and TV attachment screws. Ensure they are fully tightened. If the issue persists, consult a professional installer.
- **Difficulty moving the arm/TV:** Ensure no cables are snagged. Check for any obstructions. The joints may be stiff initially; gentle, firm movement should loosen them. Do not force.
- **Missing parts:** Refer to Section 3 (Package Contents) and contact XTRARM customer support for assistance.

## 9. WARRANTY AND SUPPORT

---

The XTRARM TiTon Double TV Wall Mount comes with a **5-year manufacturer's warranty** against defects in materials and workmanship. Spare parts are available for **2 years** from the date of purchase. For warranty claims, technical support, or any questions regarding your product, please contact XTRARM customer service through the retailer where you purchased the product or visit the official XTRARM website.