

Logitech 910-006558

Logitech MX Master 3S Wireless Mouse User Manual

Model: 910-006558 | Brand: Logitech

INTRODUCTION

This manual provides comprehensive instructions for the setup, operation, and maintenance of your Logitech MX Master 3S Wireless Mouse. Please read this manual thoroughly to ensure proper use and to maximize the performance of your device.

The Logitech MX Master 3S is a high-performance wireless mouse designed for precision, comfort, and efficiency across multiple devices and operating systems. It features advanced tracking, quiet clicks, and ultra-fast scrolling capabilities.

PRODUCT OVERVIEW

The Logitech MX Master 3S mouse is engineered for advanced users, offering a blend of ergonomic design and cutting-edge technology.



Image: Logitech MX Master 3S Wireless Mouse in Pale Grey, showcasing its ergonomic design and multiple buttons.

Key Features:

- **8K DPI Any-Surface Tracking:** Precision tracking on virtually any surface, including glass.
- **Quiet Clicks:** Reduced click noise for a quieter work environment.
- **MagSpeed Scrolling:** Ultra-fast and precise electromagnetic scrolling.
- **Ergonomic Design:** Sculpted shape for comfortable hand posture.
- **Customizable Buttons:** Seven programmable buttons for enhanced workflow.
- **FLOW Cross-Computer Control:** Seamlessly switch between multiple computers and operating systems.
- **Multi-Device Connectivity:** Connects via Logi Bolt USB receiver or Bluetooth.
- **Rechargeable Battery:** Long-lasting Li-Po battery (500 mAh) with USB-C charging.

Package Contents:

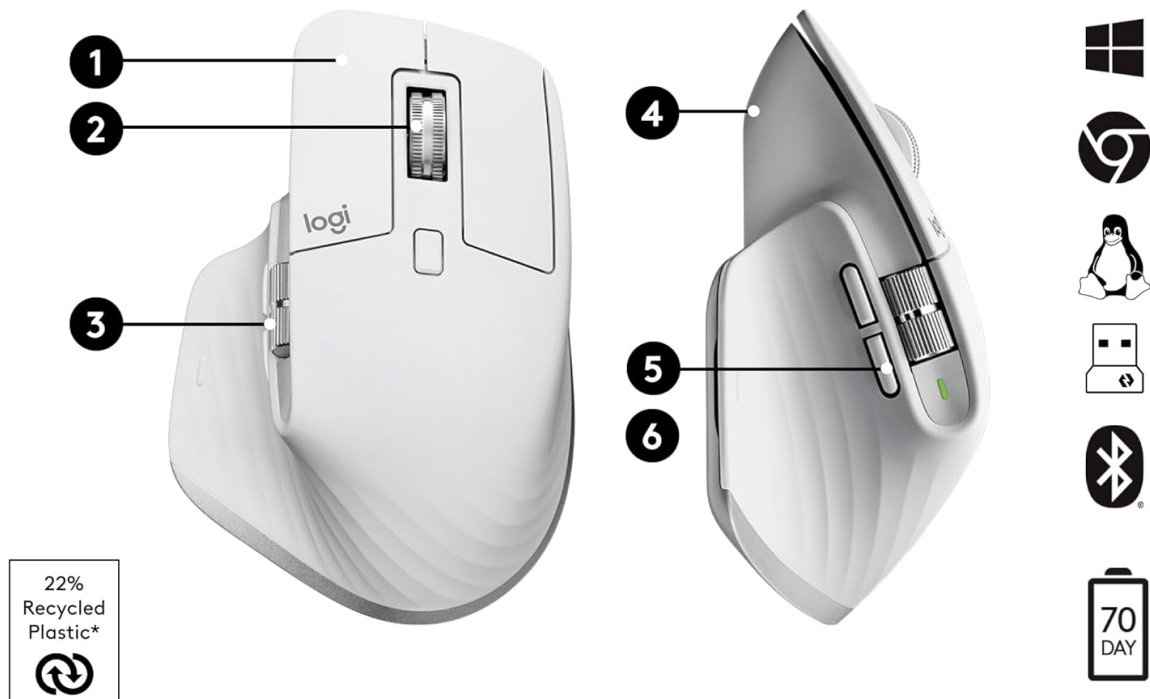


Image: Contents of the MX Master 3S package, including the mouse, Logi Bolt USB receiver, and USB-C charging cable.

- Logitech MX Master 3S Wireless Mouse
- Logi Bolt USB Receiver
- USB-C Charging Cable (USB-A to USB-C)

Component Identification:

Works with macOS & iPadOS



1. Quiet Click

2. MagSpeed wheel

3. Thumb wheel

4. 8K track-anywhere sensor

5. Customizable buttons

6. Easy Switch buttons

Image: Labeled diagram showing the key components of the MX Master 3S mouse, including the Quiet Click buttons, MagSpeed wheel, Thumb wheel, 8K track-anywhere sensor, customizable buttons, and Easy Switch buttons. Also indicates compatibility with Windows, macOS, Chrome OS, Linux, iPadOS, Android, and connectivity options (USB receiver, Bluetooth).

1. Quiet Click (Left/Right-click)

2. MagSpeed Wheel (Main scroll wheel)

3. Thumb Wheel (Horizontal scroll)

4. 8K Track-Anywhere Sensor

5. Customizable Buttons (Forward/Back, App-Switch, Middle click)

6. Easy Switch Buttons (Bottom of mouse for device switching)

SETUP

1. Initial Charging

Before first use, it is recommended to fully charge your MX Master 3S mouse. Connect the included USB-C charging cable to the mouse's USB-C port and the other end to a USB-A port on your computer or a USB power adapter.



Image: Close-up of the MX Master 3S mouse with a USB-C cable connected for charging.

2. Connecting Your Mouse

The MX Master 3S offers two primary connection methods: Logi Bolt USB Receiver or Bluetooth.

Connecting via Logi Bolt USB Receiver:

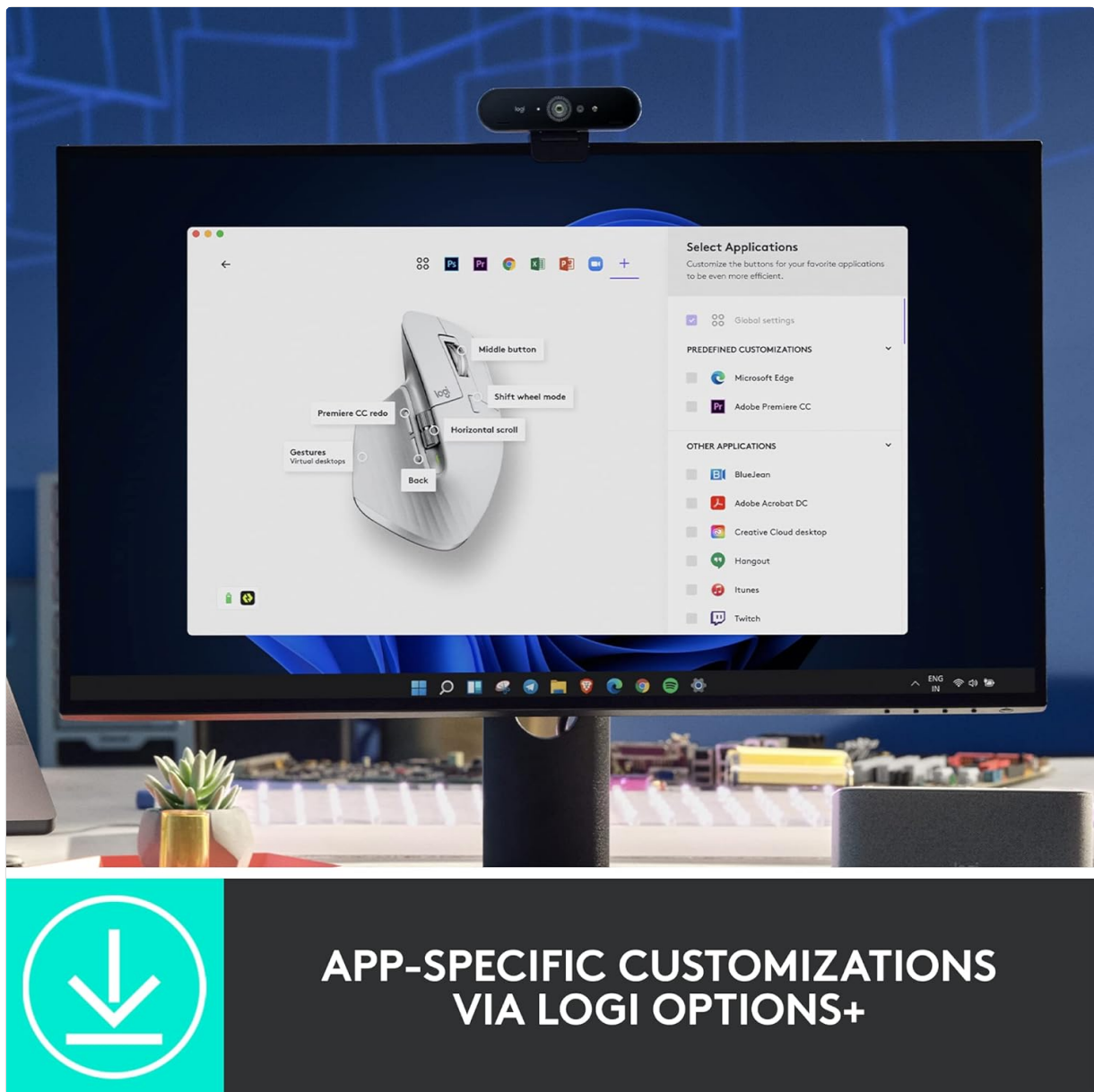
1. Insert the Logi Bolt USB receiver into an available USB-A port on your computer.
2. Turn on the mouse using the power switch located on the bottom.
3. The mouse should automatically connect to the receiver. The LED indicator on the mouse will turn solid green.

Connecting via Bluetooth:

1. Turn on the mouse using the power switch located on the bottom.
2. Press and hold one of the Easy-Switch buttons (1, 2, or 3) on the bottom of the mouse for three seconds until the LED indicator for that channel starts blinking rapidly. This indicates the mouse is in pairing mode.
3. On your computer or device, open Bluetooth settings.
4. Select "MX Master 3S" from the list of available devices and follow the on-screen prompts to complete pairing.
5. Once connected, the LED indicator will glow solid for 5 seconds.

3. Installing Logi Options+ Software (Recommended)

To unlock the full potential of your MX Master 3S, including button customization, application-specific settings, and FLOW cross-computer control, download and install the free Logi Options+ software from the official Logitech website (www.logitech.com/optionsplus).



APP-SPECIFIC CUSTOMIZATIONS VIA LOGI OPTIONS+

Image: A computer screen displaying the Logi Options+ application interface, showing options for customizing mouse buttons and creating app-specific profiles.

OPERATING INSTRUCTIONS

MagSpeed Electromagnetic Scrolling

The MX Master 3S features a MagSpeed electromagnetic scroll wheel that offers two modes:

- **Ratcheted Mode:** Provides precise, line-by-line scrolling, ideal for detailed work.
- **Hyper-fast Mode:** Automatically switches to free-spinning mode for rapid scrolling through long documents or web pages. This mode can scroll 1,000 lines per second.



Image: A close-up view of the MagSpeed scroll wheel on the MX Master 3S mouse, highlighting its metallic finish and precision engineering.

You can manually switch between modes by pressing the mode-shift button located behind the scroll wheel, or configure it to switch automatically based on scrolling speed via Logi Options+.

Quiet Clicks

The MX Master 3S is designed with Quiet Clicks, reducing audible click noise by 90% compared to previous models, providing a quieter user experience without compromising tactile feedback.



QUIET CLICKS - 90% LESS NOISE

Image: A person working at a desk, using the MX Master 3S mouse, illustrating the quiet click feature in a typical office or home setting.

8K DPI Any-Surface Tracking

The advanced Darkfield High Precision sensor allows the MX Master 3S to track on virtually any surface, including glass (minimum 4mm thickness), with an 8000 DPI sensor for precise control.



TRACK ANYWHERE, EVEN GLASS NOW WITH 8K DPI PRECISION

Image: A hand operating the MX Master 3S mouse on a clear glass surface, demonstrating its ability to track on challenging materials.

Customizable Buttons and App-Specific Profiles

Utilize the Logi Options+ software to customize the seven programmable buttons (Left/Right-click, Back/Forward, App-Switch, Wheel mode-shift, Middle click) to perform specific actions or shortcuts. You can also create application-specific profiles, allowing the mouse buttons to behave differently depending on the active application.

FLOW Cross-Computer Control

Logitech FLOW enables seamless control of multiple computers with a single MX Master 3S mouse. You can move your cursor, text, and files between up to three computers, even across different operating systems (Windows and macOS), by simply moving your cursor to the edge of the screen. This feature requires Logi Options+ to be installed on all connected computers.



Image: A setup showing a laptop and a desktop monitor, with an arrow indicating the seamless transfer of cursor, text, and files between them using Logitech FLOW.

Multi-Device Switching

The Easy-Switch buttons on the bottom of the mouse allow you to quickly switch between up to three paired devices (via Logi Bolt or Bluetooth) with a single press.

MAINTENANCE

Cleaning Your Mouse

To maintain optimal performance and hygiene, regularly clean your MX Master 3S mouse:

- Use a soft, lint-free cloth slightly dampened with water or an alcohol-based cleaner (e.g., isopropyl alcohol).
- Avoid harsh chemicals, abrasive materials, or excessive moisture.
- Gently wipe the surface of the mouse, paying attention to areas that come into frequent contact with your hand.
- For the optical sensor, use a dry cotton swab or compressed air to remove any dust or debris.

Battery Care

The MX Master 3S uses a rechargeable Li-Po battery. Follow these guidelines for optimal battery life:

- Charge the mouse using the provided USB-C cable.
- Avoid extreme temperatures, as they can affect battery performance.
- If storing the mouse for an extended period, charge it to about 50% before storage.

TROUBLESHOOTING

| Problem | Possible Solution |
|---|--|
| Mouse not responding or connecting. | <ul style="list-style-type: none">• Ensure the mouse is turned on.• Check battery level and charge if necessary.• For Logi Bolt: Ensure the receiver is securely plugged into a working USB port. Try a different USB port.• For Bluetooth: Ensure Bluetooth is enabled on your device. Re-pair the mouse by holding an Easy-Switch button until it blinks, then search for it in your device's Bluetooth settings.• Try restarting your computer. |
| Cursor movement is erratic or imprecise. | <ul style="list-style-type: none">• Clean the optical sensor on the bottom of the mouse.• Ensure the surface you are using is clean and suitable for tracking (e.g., not highly reflective or transparent unless it's glass).• Adjust DPI settings in Logi Options+ if the sensitivity is too high or low. |
| MagSpeed scrolling not working as expected. | <ul style="list-style-type: none">• Press the mode-shift button behind the scroll wheel to toggle between ratcheted and hyper-fast modes.• Check Logi Options+ settings for scroll wheel behavior. |
| Custom buttons not functioning. | <ul style="list-style-type: none">• Ensure Logi Options+ software is installed and running.• Verify button assignments within Logi Options+.• Check if an application-specific profile is active that might override global settings. |

SPECIFICATIONS

| Feature | Detail |
|--------------|------------|
| Model Number | 910-006558 |

| Feature | Detail |
|-----------------------------|--|
| Dimensions (LxWxH) | 4.9 x 3.3 x 2.0 inches (124.9 x 84.3 x 51 mm) |
| Weight | 4.97 oz (141 g) |
| Sensor Technology | Darkfield High Precision |
| DPI Range | 200 to 8000 DPI (adjustable in 50 DPI increments) |
| Buttons | 7 buttons (Left/Right-click, Back/Forward, App-Switch, Wheel mode-shift, Middle click) |
| Scroll Wheels | MagSpeed electromagnetic scroll wheel, Thumbwheel |
| Wireless Operating Distance | Up to 33 ft (10 m) |
| Battery Type | Rechargeable Li-Po (500 mAh) |
| Battery Life | Up to 70 days on a single full charge (may vary based on usage) |
| Connectivity | Logi Bolt USB Receiver, Bluetooth Low Energy Technology |
| Compatibility | Windows, macOS, Linux, Chrome OS, iPadOS, Android |
| Recycled Plastic Content | 27% certified post-consumer recycled plastic (Graphite and Black models) |

WARRANTY AND SUPPORT


For detailed warranty information and technical support, please refer to the official Logitech support website or contact Logitech customer service directly.




Logitech Support Website: support.logi.com

Please retain your proof of purchase for warranty claims.

© 2025 Logitech. All rights reserved. Logitech, Logi, and their respective logos are trademarks or registered trademarks of Logitech Europe S.A. and/or its affiliates in the U.S. and other countries.

Related Documents - 910-006558

| | |
|---|---|
|  MX MASTER 3S FOR BUSINESS Discover the Logitech MX Master 3S for Business wireless mouse, engineered for enhanced productivity, comfort, and advanced security with Logi Bolt connectivity. Explore its features, technical specifications, and compatibility. | Logitech MX Master 3S for Business Wireless Mouse - Features and Specifications Discover the Logitech MX Master 3S for Business wireless mouse, engineered for enhanced productivity, comfort, and advanced security with Logi Bolt connectivity. Explore its features, technical specifications, and compatibility. |
|---|---|

| | |
|---|--|
| <div><div>User Manual of Product 1</div><div>Logitech MX Master 3S - Wireless Performance Mouse with Ultra-Fast Scrolling, Ergo, 8K DPI, Track on Glass, Quiet Clicks, USB-C, Bluetooth, Windows, Linux, ChromeOS, macOS</div></div> | <div><div>Logitech MX Master 3S Wireless Performance Mouse User Manual</div><div>Learn how to set up, use, and customize your Logitech MX Master 3S wireless performance mouse with ultra-fast scrolling, 8K DPI sensor, and multi-device connectivity. This user manual provides detailed instructions on pairing, software installation, button customization, battery management, and cleaning, enhancing productivity across Windows, Linux, Chrome, and Mac OS.</div></div> |
| <div><div>logitech</div><div></div><div><div>MX MASTER 3S FOR BUSINESS</div><div>Performance Wireless Mouse</div><div><div>Product Overview</div><div>Key Features</div><div>Specifications</div><div>Compatibility</div><div>Warranty</div><div>Support</div></div></div></div> | <div><div>Logitech MX Master 3S for Business: Performance Wireless Mouse - Datasheet</div><div>Discover the Logitech MX Master 3S for Business, a performance wireless mouse designed for enhanced productivity, comfort, and security. Features include 8000 DPI tracking, MagSpeed scrolling, Logi Bolt connectivity, and ergonomic design. View specifications and compatibility.</div></div> |
| <div><div>logitech</div><div></div><div><div>Logitech MX Master 3S Performance Wireless Mouse</div><div><div>Product Overview</div><div>Key Features</div><div>Specifications</div><div>Compatibility</div><div>Warranty</div><div>Support</div></div></div></div> | <div><div>Logitech MX Master 3S Performance Wireless Mouse - Advanced Ergonomics & 8K DPI Sensor</div><div>Discover the Logitech MX Master 3S, a reimagined wireless mouse with quiet clicks, an 8K DPI sensor for ultimate performance on any surface, and advanced ergonomic design for productivity.</div></div> |
| <div><div>Getting Started - MX Master 3S for Mac</div><div><div>Introduction</div><div>Unboxing</div><div>Pairing</div><div>Customization</div><div>Battery</div><div>Cleaning</div></div></div> | <div><div>Logitech MX Master 3S for Mac: Getting Started and Features Guide</div><div>Get started with your Logitech MX Master 3S for Mac wireless mouse. This guide covers detailed setup, Bluetooth and Easy-Switch pairing, MagSpeed scroll wheel functionality, thumb wheel and gesture button customization, app-specific settings, Logitech Flow for multi-computer use, battery charging and status, and cleaning instructions.</div></div> |
| <div><div>logitech</div><div></div><div><div>MX MASTER 3S</div><div>Performance Wireless Mouse</div><div><div>Product Overview</div><div>Key Features</div><div>Specifications</div><div>Compatibility</div><div>Warranty</div><div>Support</div></div></div></div> | <div><div>Logitech MX Master 3S Getting Started Guide</div><div>A comprehensive guide to setting up and using the Logitech MX Master 3S wireless mouse, covering detailed setup, pairing with multiple computers, button customization, gesture controls, and battery management.</div></div> |