

Ideal Standard T385701

Ideal Standard Strada II Soft Close Slim Toilet Seat and Cover T385701 User Manual

Model: T385701

INTRODUCTION

This manual provides essential information for the installation, operation, maintenance, and troubleshooting of your Ideal Standard Strada II Soft Close Slim Toilet Seat and Cover, model T385701. Please read these instructions carefully before installation and use to ensure proper function and longevity of the product.

This toilet seat is designed exclusively for use with Ideal Standard Strada II toilet bowls.

PACKAGE CONTENTS

- Ideal Standard Strada II Soft Close Slim Toilet Seat
- Toilet Seat Cover
- Mounting Hardware (hinges, bolts, washers, nuts)

SETUP AND INSTALLATION

Before beginning installation, ensure you have all components and necessary tools. Tools typically required include a screwdriver (flathead or Phillips, depending on hardware) and possibly an adjustable wrench.

1. **Preparation:** If replacing an old toilet seat, remove it by unscrewing the nuts from the bolts located underneath the toilet bowl rim. Clean the toilet bowl's mounting area thoroughly.
2. **Positioning the Hinges:** Place the new mounting hardware (bolts and washers) through the holes on the toilet bowl rim.
3. **Attaching the Seat:** Align the toilet seat's hinges with the bolts. Secure the seat by tightening the nuts from underneath the toilet bowl. Ensure the seat is centered and stable before fully tightening. Do not overtighten, as this may damage the ceramic or the seat.
4. **Testing:** Gently lower the seat and cover to ensure the soft-close mechanism functions correctly and the seat is securely attached without wobbling.

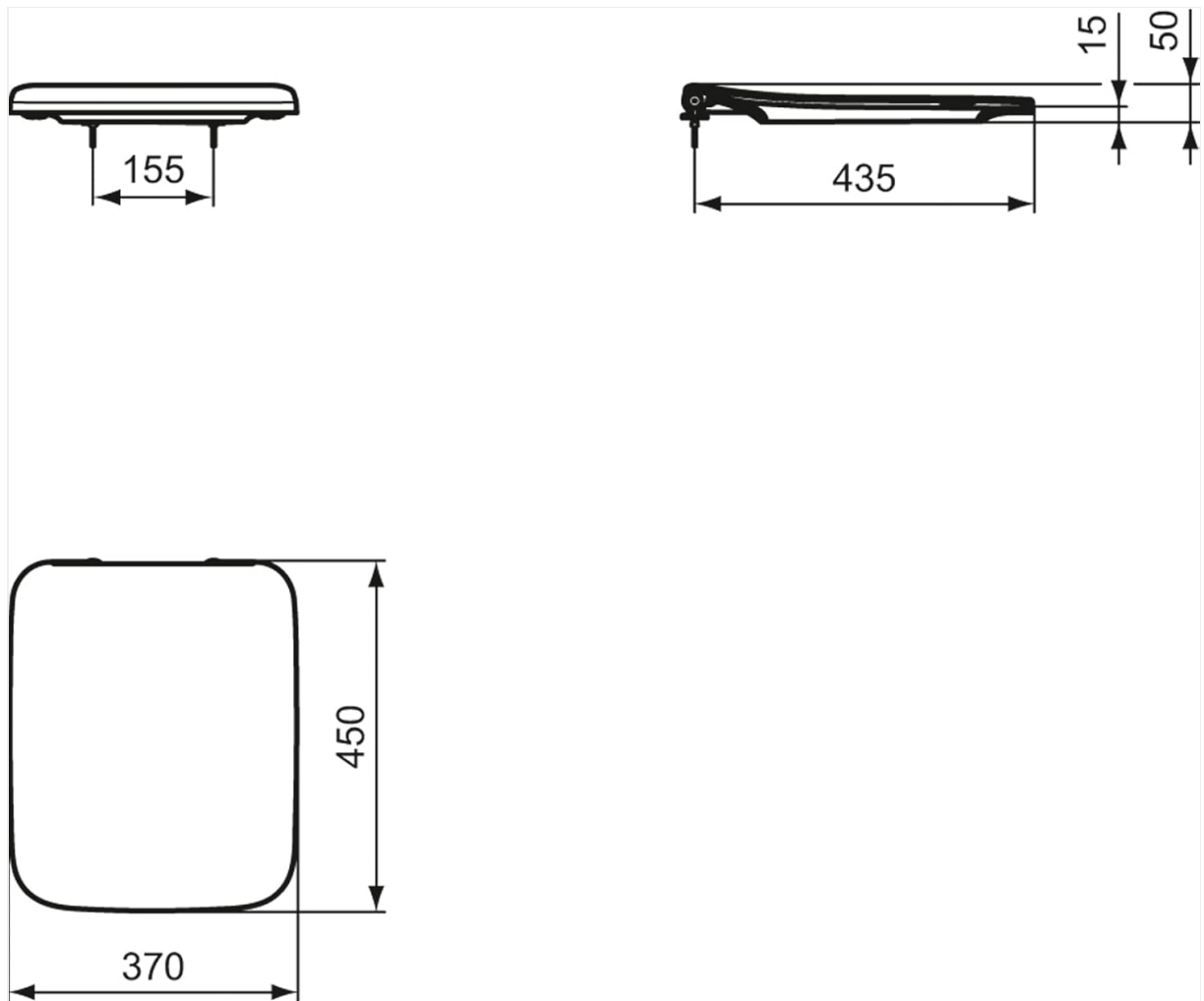


Image: Technical diagram illustrating the dimensions of the toilet seat, including length, width, and hinge spacing. This diagram is crucial for verifying compatibility and proper installation.



Image: The Ideal Standard Strada II toilet seat shown installed on a toilet bowl, demonstrating the soft-close feature as the seat and cover gently descend.

OPERATING INSTRUCTIONS

Your Ideal Standard Strada II toilet seat features a soft-close mechanism designed for quiet and controlled closing, preventing slamming and reducing wear.

- **Soft Close Function:** To engage the soft-close feature, simply push the seat or cover downwards gently. The mechanism will take over, allowing it to close slowly and silently. Do not force the seat or cover down, as this can damage the soft-close hinges.
- **Opening:** Lift the seat or cover manually to the desired open position.



Image: A visual representation of the soft-close mechanism in action, showing the toilet seat and cover in various stages of gentle descent.

MAINTENANCE AND CLEANING

Proper care will ensure the longevity and appearance of your toilet seat.

- **Cleaning:** Clean the toilet seat regularly with a soft cloth and mild soapy water. Avoid abrasive cleaners, harsh chemicals, or scouring pads, as these can damage the finish and plastic material.
- **Hinge Care:** Periodically check the hinge connections for tightness. If the seat feels loose, gently tighten the mounting nuts underneath the toilet bowl. Do not use lubricants on the soft-close mechanism unless specifically recommended by the manufacturer.
- **Disassembly for Cleaning (if applicable):** Some soft-close seats allow for quick release for thorough cleaning. Refer to specific hinge instructions if your model supports this feature.

TROUBLESHOOTING

Problem	Possible Cause	Solution
Seat is loose or wobbles.	Mounting nuts are not sufficiently tightened.	Tighten the mounting nuts underneath the toilet bowl. Ensure not to overtighten.
Soft-close mechanism not working or seat slams.	Mechanism is damaged or obstructed.	Ensure no foreign objects are obstructing the hinges. Do not force the seat down. If the issue persists, contact customer support.
Seat does not align correctly with the bowl.	Incorrect installation or hinge adjustment.	Loosen the mounting nuts slightly, adjust the seat position, then retighten.

SPECIFICATIONS

Model: T385701
Brand: Ideal Standard
Material: Plastic
Color: White
Style: Wrapover, Soft Closing
Shape: D-Shaped
Product Dimensions: 18.5"L x 15.35"W (approx. 47cm L x 39cm W)
Item Weight: 5.57 pounds (approx. 2.53 kg)
Compatibility: Exclusively with Ideal Standard Strada II toilet bowls

WARRANTY INFORMATION

This Ideal Standard Strada II Soft Close Slim Toilet Seat and Cover (T385701) is covered by a **5-year warranty**. This warranty covers manufacturing defects under normal use and service. For specific terms and conditions, or to make a warranty claim, please refer to the official Ideal Standard warranty documentation or contact their customer support.

SUPPORT AND CONTACT

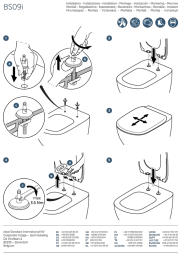
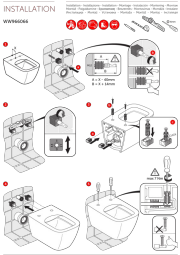

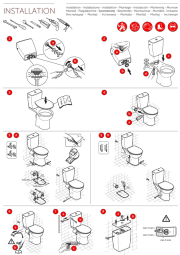
Should you require further assistance, have questions regarding installation, or need to report a product issue, please contact Ideal Standard customer support. Visit the official Ideal Standard website for contact details and additional resources.

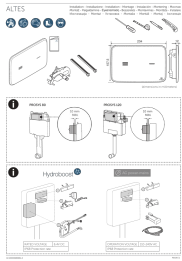
Website: www.idealstandard.com (Please check for your regional website)

© 2023 Ideal Standard. All rights reserved.

This manual is for informational purposes only. Ideal Standard reserves the right to make changes to products and specifications without prior notice.

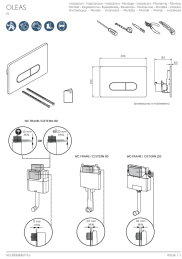
Related Documents - T385701

	<p>Ideal Standard BS09i Toilet Seat Installation Guide</p> <p>A step-by-step guide for the installation of the Ideal Standard BS09i toilet seat, featuring clear instructions and diagrams.</p>
	<p>Ideal Standard WW966066 Wall-Hung Toilet Installation Guide</p> <p>Comprehensive installation guide for the Ideal Standard WW966066 wall-hung toilet, detailing steps for secure mounting, waste pipe connection, and final checks with safety precautions and tool requirements.</p>
	<p>Ideal Standard Washstand Installation Guide - Models ILIFE A, STRADA II, TESI, C.AIR, CONCA</p> <p>Comprehensive installation guide for Ideal Standard washstands, including models ILIFE A, STRADA II, TESI, C.AIR, and CONCA. Covers assembly steps, technical specifications, safety warnings, maintenance, product life cycle, and guarantee information.</p>
	<p>Ideal Standard Toilet Installation Guide</p> <p>Comprehensive installation guide for Ideal Standard toilets, covering various models and providing step-by-step instructions with diagrams and part codes.</p>



Ideal Standard Altes NT1 Electronic Flush Plate Installation Guide

Comprehensive installation guide for the Ideal Standard Altes NT1 Electronic Flush Plate. Learn how to install this modern flush plate with ProSys 80 and ProSys 120 cisterns, featuring Hydroboost and AC power-mains options, and IP68 protection.



Ideal Standard OLEAS P1 Pneumatic Dual Flush Plate Installation Guide

This guide provides comprehensive instructions for installing the Ideal Standard OLEAS P1 pneumatic dual flush plate. It covers dimensions, compatibility with different cisterns, and step-by-step assembly procedures, ensuring a correct and efficient installation.