

Volway MU10

Volway 10" 4K Mirror Dash Cam User Manual

Brand: Volway | Model: MU10

INTRODUCTION AND OVERVIEW

The Volway 10" 4K Mirror Dash Cam is an advanced automotive recording system designed to enhance driving safety and provide comprehensive surveillance. This device integrates a high-resolution 4K front camera, a waterproof rear backup camera, and a full touch screen display into a rearview mirror form factor. It features innovative voice control, enhanced night vision, parking assistance, and continuous loop recording capabilities.



Figure 1: Volway 10" 4K Mirror Dash Cam with its main components.

Key features include:

- **Advanced Voice Control Function:** Control the dash cam hands-free with voice commands for screen on/off, video locking, camera switching, photo taking, and recording start/stop.
- **4K Dual Cams with Wide FOV:** Ultra HD video resolution up to 3840 x 2160P (4K) from the front camera, paired with a 160° rear lens. The 170° adjustable front lens and 160° rear lens provide a total 330° field of view.
- **Superior Starlight Night Vision:** Equipped with a superior sensor for sharp videos with enhanced details in low light conditions.
- **Backup Camera with Parking Assistance:** Displays a high-resolution rear view with park assist lines when the vehicle is in reverse.
- **Loop Recording/G-sensor/Parking Monitor:** Ensures continuous recording, automatically locks collision footage, and provides surveillance when the vehicle is off.

SETUP GUIDE

Package Contents

Before installation, please verify that all components are present:

- Volway 10" Mirror Dash Cam Unit
- Waterproof Rear Camera
- Rear Camera Extension Cable
- Car Charger (USB Type C)
- Mounting Straps/Bands
- GPS Module (if included with your specific package)
- User Manual

Installation Steps

1. **Mount the Dash Cam:** Secure the mirror dash cam over your existing rearview mirror using the provided rubber straps. Ensure it is firmly attached and does not obstruct your view.
2. **Install the Rear Camera:**
 - Choose a suitable location for the rear camera, typically above the license plate or inside the rear window.
 - Connect the rear camera to the main dash cam unit using the extension cable.
 - Route the cable neatly along the vehicle's interior trim to the front unit.
 - For parking assistance functionality, connect the rear camera's red trigger wire to your vehicle's reverse light positive wire. This step is optional if you only require continuous rear recording.
3. **Power Connection:**
 - Insert the USB Type C car charger into the dash cam's power port.
 - Plug the other end of the car charger into your vehicle's 12V power outlet (cigarette lighter socket).
 - Route the power cable discreetly to avoid interference with driving.
4. **Insert MicroSD Card:** Insert a high-speed (Class 10 or higher) MicroSD card (not included) into the designated slot on the dash cam. Format the card through the dash cam's settings menu before first use.
5. **Adjust Camera Angle:** Adjust the front camera lens on the mirror unit to ensure it captures the road ahead clearly. Adjust the rear camera for optimal rear view.



Figure 2: Front and Rear Camera Modules.

Power On/Off

- The dash cam will automatically power on and begin recording when your vehicle's ignition is turned on (if connected to a switched power source).
- It will automatically power off when the ignition is turned off.
- To manually power on/off, press and hold the power button located on the bottom edge of the mirror.

Touch Screen Navigation

The 10-inch full touch screen allows for intuitive control:

- **Swipe Left/Right:** Switch between front camera view, rear camera view, or dual camera view.
- **Swipe Up/Down (on camera view):** Adjust the vertical viewing angle of the active camera.
- **Tap:** Access menu options or confirm selections.
- **Tap to turn off screen:** The screen can be turned off to function as a traditional mirror while recording continues in the background.

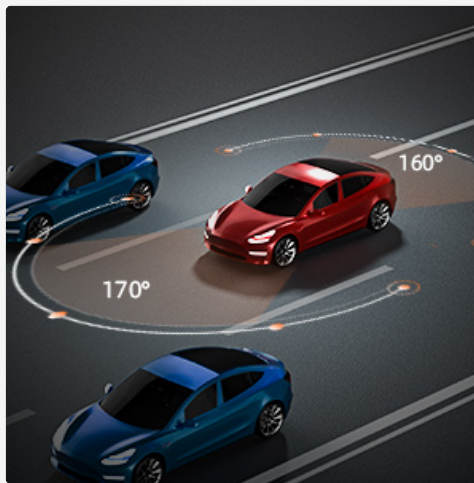
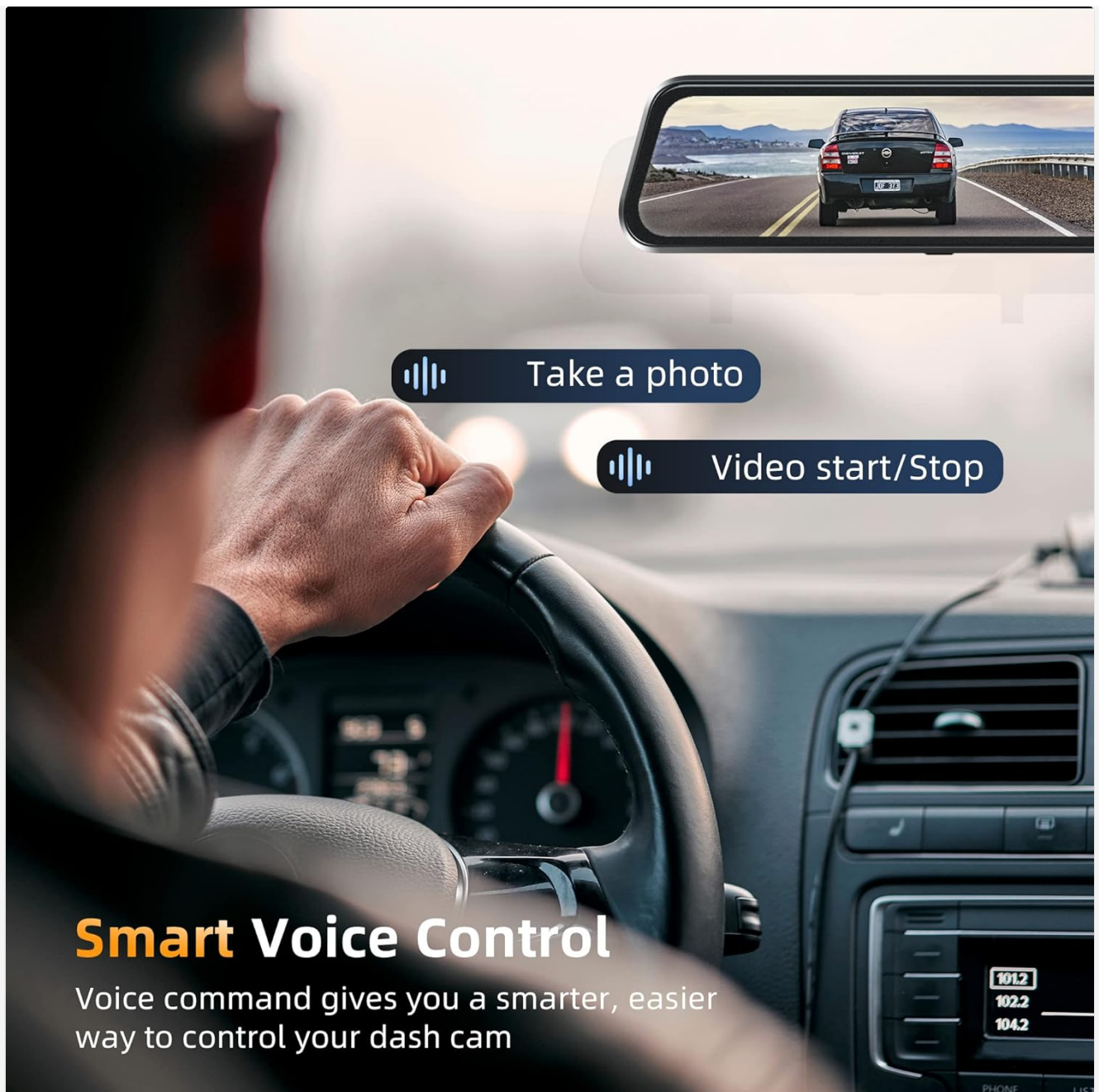


Figure 3: Touch Screen Interface Detail.

Voice Control Commands

The Volway dash cam supports the following voice commands for hands-free operation:

- "Turn on screen"
- "Turn off screen"
- "Lock the video"
- "Show both video" (dual view)
- "Take photo"
- "Video start"
- "Video stop"
- "Show front camera"
- "Show rear camera"
- "Turn on audio"
- "Turn off audio"



Smart Voice Control

Voice command gives you a smarter, easier way to control your dash cam

Figure 4: Voice Control in action.

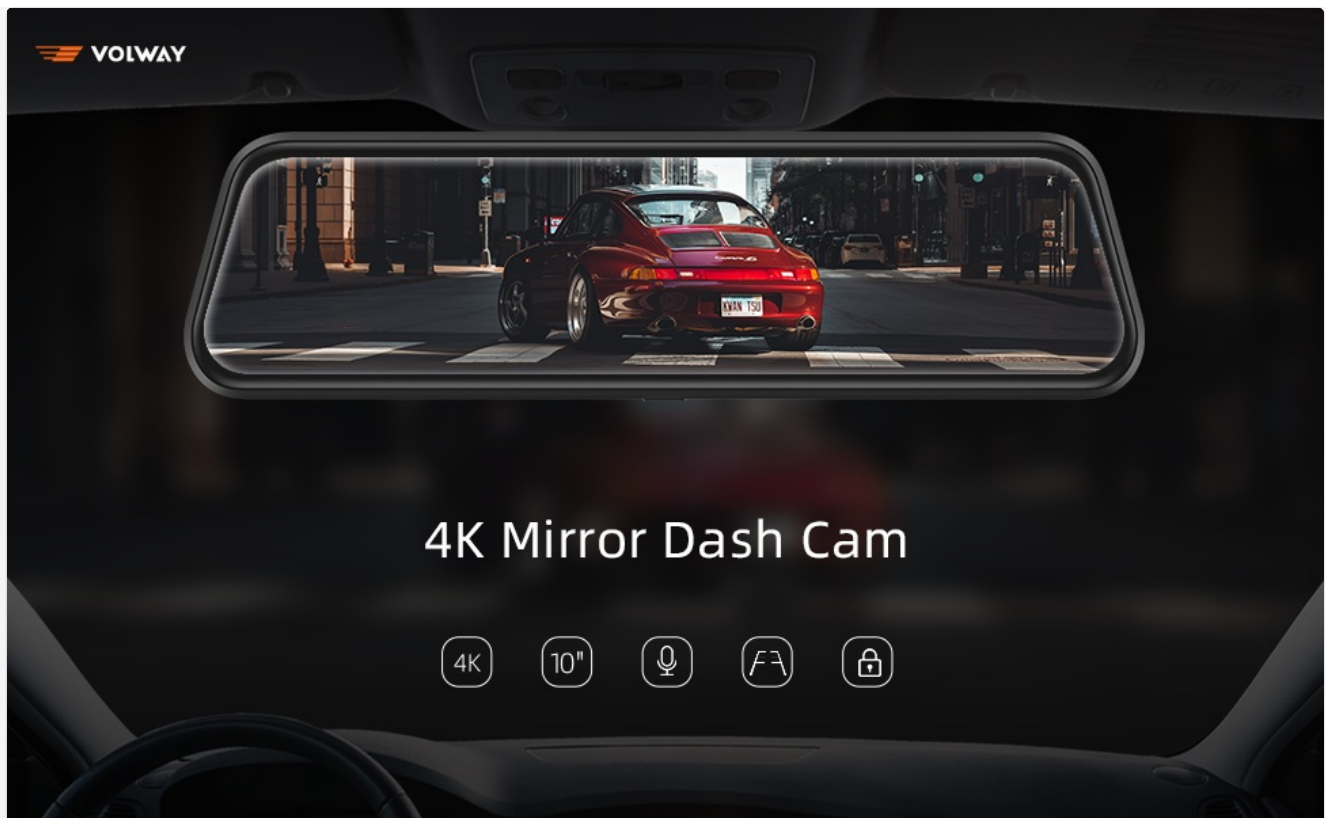


Figure 5: Key features overview.

Recording Modes

- **Loop Recording:** The dash cam continuously records, overwriting the oldest unlocked footage when the memory card is full. This ensures you always have the latest recordings.
- **G-Sensor (Emergency Locking):** In the event of a sudden impact or collision, the built-in G-sensor automatically detects the event and locks the current video segment, preventing it from being overwritten by loop recording.
- **Parking Monitor:** When enabled, the dash cam will automatically start recording if it detects a vibration or collision while the vehicle is parked and turned off. This requires a continuous power supply (hardwire kit, sold separately, may be needed).



Figure 6: Emergency Locking in action.



Figure 7: Recording features overview.

Night Vision and Parking Assistance

- **Enhanced Night Vision:** The dash cam automatically adjusts to low light conditions to provide clear video recordings during nighttime driving.
- **Parking Assistance:** When the vehicle is shifted into reverse (and the trigger wire is connected), the screen will automatically display the rear camera view with adjustable parking guidelines to assist with safe parking maneuvers.

Superior Night Vision

Experience enhanced detail at starlight environment with
Sony Starvis IMX335



Figure 8: Superior Night Vision capability.



Figure 9: Reliable Parking Surveillance with guidelines.

MAINTENANCE

- **Cleaning:** Use a soft, dry cloth to clean the dash cam screen and lenses. Avoid abrasive cleaners or solvents.
- **MicroSD Card:** Regularly format the MicroSD card (at least once a month) to ensure optimal performance and prevent data corruption. Back up important files before formatting.
- **Firmware Updates:** Check the official Volway website periodically for any available firmware updates to improve performance and add new features.
- **Temperature:** Avoid exposing the device to extreme temperatures for prolonged periods, as this can affect battery life and component integrity.

TROUBLESHOOTING

| Problem | Possible Cause | Solution |
|---------|----------------|----------|
|---------|----------------|----------|

| Problem | Possible Cause | Solution |
|-------------------------------|---|---|
| Dash cam does not power on. | No power supply; faulty car charger; loose connection. | Check car charger connection and vehicle's 12V outlet. Try a different power source. Ensure ignition is on. |
| Recording stops or freezes. | MicroSD card full or corrupted; low-speed MicroSD card. | Format the MicroSD card. Use a Class 10 or U3 rated MicroSD card. Replace the card if issues persist. |
| Rear camera not displaying. | Loose cable connection; faulty rear camera. | Check the connection of the rear camera cable to the main unit. Ensure the cable is not damaged. |
| Voice control not responding. | Loud background noise; incorrect commands; microphone obstructed. | Speak clearly and directly to the device. Reduce cabin noise. Ensure no obstructions near the microphone. |
| Poor night vision quality. | Dirty lens; extreme low light conditions. | Clean the camera lenses. While enhanced, night vision performance is limited by ambient light. |

TECHNICAL SPECIFICATIONS

| Feature | Specification |
|--------------------------|---|
| Brand | Volway |
| Model | MU10 |
| Screen Size | 10 Inches |
| Video Capture Resolution | 4K (Front) |
| Field Of View | 170 Degrees (Front), 160 Degrees (Rear) |
| Control Method | Touch, Voice |
| Mounting Type | Rearview Mirror Mount |
| Connectivity Technology | USB |
| Item Weight | 2.33 pounds |
| Batteries | 1 Lithium Ion batteries required (included) |
| Package Dimensions | 13.43 x 4.88 x 3.03 inches |

WARRANTY AND SUPPORT

Volway products are designed for reliability and performance. This product comes with a standard manufacturer's warranty. For specific warranty terms, registration, or technical support, please refer to the warranty card included in your package or visit the official Volway website. You may also contact Volway customer service directly for assistance with product inquiries, troubleshooting, or replacement parts.

For the latest information and support resources, please visit the [Volway Store on Amazon](#).

© 2023 Volway. All rights reserved.
This manual is subject to change without notice.