

[Manuals.plus](#) /

> [ANGENIL](#) /

> ANGENIL Nano Titanium Flat Iron Hair Straightener and Curler 2-in-1 User Manual

## ANGENIL AN-068B

# ANGENIL Nano Titanium Flat Iron Hair Straightener and Curler 2-in-1 User Manual

Model: AN-068B | Brand: ANGENIL

## INTRODUCTION

The ANGENIL Nano Titanium Flat Iron Hair Straightener and Curler 2-in-1 is a professional styling tool designed to create spectacular results on all hair types, from frizzy to coarse. This versatile iron allows for quick straightening, flipping, waving, and curling with minimal effort, providing a simple and fast styling experience.

Its advanced features, including nano titanium plates and precise temperature control, ensure efficient and safe hair styling. This manual provides detailed instructions for setup, operation, maintenance, and safety to help you achieve the best results and ensure the longevity of your device.



ANGENIL Nano Titanium Flat Iron and Curler 2-in-1 in gold, shown with its packaging, a heat-resistant glove, and two hair clips.

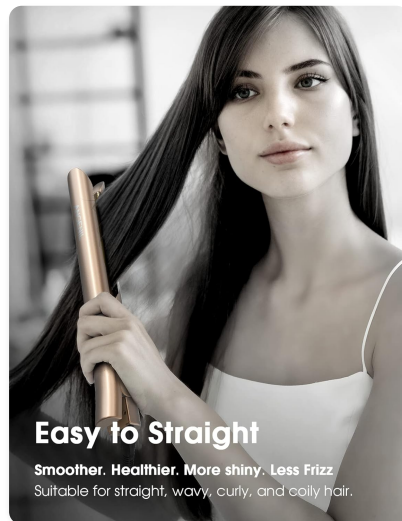
## SETUP

- Unboxing:** Carefully remove the ANGENIL Nano Titanium Flat Iron and all accessories from the packaging. Ensure all components are present: the flat iron, heat-resistant glove, and hair clips.
- Initial Inspection:** Inspect the device for any visible damage. Do not use if the cord or device appears damaged.
- Power Connection:** Plug the straightener into a suitable electrical outlet. This device supports global dual voltage (100-240V), making it suitable for travel.
- Heating:** Allow the iron to heat up. The nano titanium plates provide fast heating in approximately 30 seconds. The digital display will indicate the temperature.

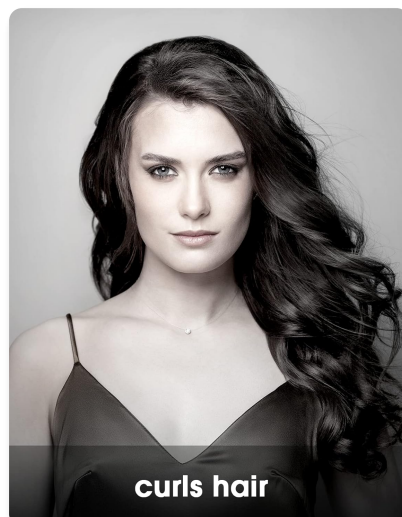
## OPERATING INSTRUCTIONS

Follow these steps for effective and safe use of your ANGENIL Nano Titanium Flat Iron:

1. **Prepare Your Hair:** Ensure your hair is clean, dry, and free of tangles. Brush and detangle your hair thoroughly before styling.
2. **Section Your Hair:** Divide your hair into manageable sections using the provided hair clips. Smaller sections generally yield better results.
3. **Select Temperature:** Turn on the straightener and select your desired temperature setting using the digital display. There are 5 variable temperature settings: 143.3 °C (290°F), 165.6 °C (330°F), 187.8 °C (370°F), 210 °C (410°F), and 232.2 °C (450°F). Choose a temperature appropriate for your hair type.
4. **Straightening:** Place a section of hair between the heating plates. Close the plates gently but firmly and slowly glide the iron down the entire length of the hair section, from roots to ends. Do not hold the iron in one place for too long to avoid heat damage.
5. **Curling/Waving:** For curls or waves, place a section of hair between the plates near the roots. Rotate the iron 180 degrees away from your face and slowly pull it down the hair shaft, maintaining the rotation. The rounded edges of the iron facilitate smooth curling.
6. **Repeat:** Repeat the process for all sections of your hair until you achieve your desired style.
7. **Finish:** Once styling is complete, turn off the straightener and unplug it from the electrical outlet. Allow the device to cool down completely before storing.

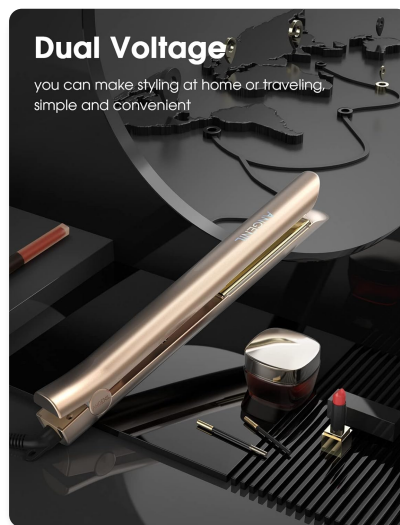


Easy to Straighten

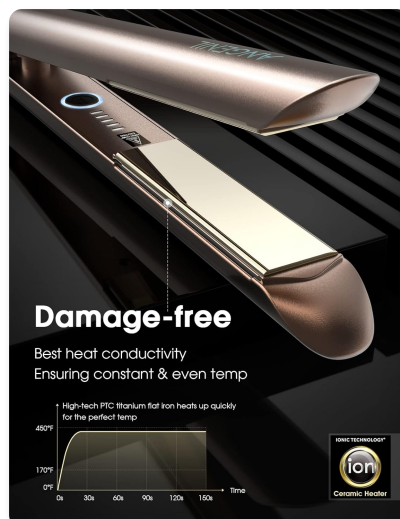


## FEATURES

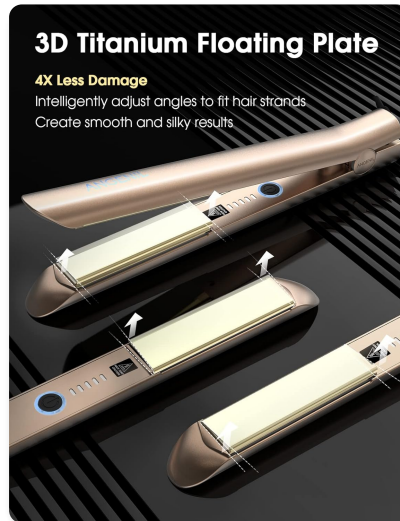
- **2-in-1 Straightener and Curler:** The versatile floating plates allow you to achieve any hairstyle, from sleek straight looks to bouncy curls or natural beach waves.
- **Safe Design:** Features rounded edges that effectively prevent hair from snagging or pulling. It provides constant and even heat distribution, helping you create shiny, silky, and pressed hairstyles in less time.
- **Nano Titanium Plates:** Equipped with high-tech PTC titanium flat iron plates that offer fast, even, and smooth gliding through hair. It heats up rapidly in just 30 seconds.
- **Dual Voltage:** Designed with global dual voltage (100-240V), making it perfect for international travel.
- **Adjustable Temperature Settings:** Offers 5 variable temperature settings (143.3 °C/165.6 °C/187.8 °C/210 °C/232.2 °C) with a clear digital display, providing precise control for all hair types to achieve a perfectly sleek and smooth look.
- **Automatic Shut-off:** For enhanced safety, the device automatically shuts off after 60 minutes of inactivity.
- **360° Swivel Cord:** The professional 360° swivel cord ensures tangle-free styling and ease of use from any angle.
- **Portable:** Its compact design makes it easy to carry and store, ideal for home use or travel.



Dual Voltage for Travel



Damage-Free Styling



3D Titanium Floating Plates

## MAINTENANCE

Proper maintenance ensures the longevity and optimal performance of your styling tool:

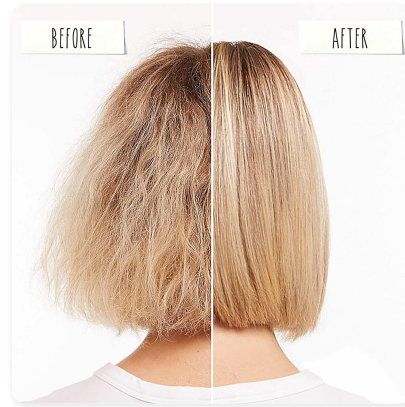
- **Cleaning:** Always ensure the device is unplugged and completely cool before cleaning. Wipe the exterior and heating plates with a soft, damp cloth. Do not use abrasive cleaners or harsh chemicals.
- **Storage:** Store the straightener in a cool, dry place, away from moisture. Ensure the cord is not wrapped tightly around the device, as this can cause damage over time.
- **Regular Inspection:** Periodically check the power cord and plug for any signs of damage. If any damage is found, discontinue use immediately and contact customer support.

## TROUBLESHOOTING

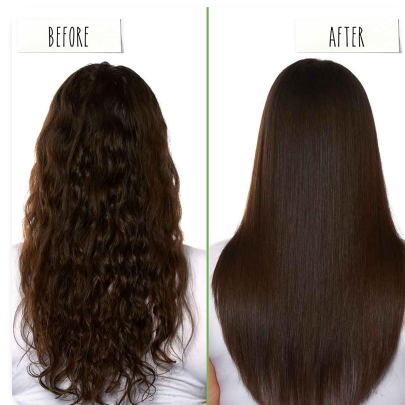
If you encounter issues with your ANGENIL Flat Iron, try these common troubleshooting steps:

- **Device Not Heating:**
  - Ensure the device is properly plugged into a working electrical outlet.
  - Check if the power button is pressed and the temperature display is active.
  - Verify that the outlet itself is functioning by plugging in another appliance.
- **Hair Not Straightening/Curling Effectively:**
  - Ensure your hair is completely dry before styling.
  - Increase the temperature setting if your hair type requires more heat.
  - Work with smaller sections of hair to ensure even heat distribution.
  - Slow down the gliding speed of the iron through your hair.
- **Device Shuts Off Unexpectedly:**

- The device has an automatic shut-off feature after 60 minutes of inactivity. If you are actively using it, ensure it hasn't been idle for too long.
- Unplug and re-plug the device to reset it.



Before and After: Blonde Hair



Before and After: Dark Hair

## SAFETY WARNINGS

**IMPORTANT:** Heated styling tools can become very hot and cause burns. Please observe the following safety precautions:

- Always unplug the device when not in use.
- Keep out of reach of children.
- Do not use near water or in damp environments.
- Do not touch the hot plates directly during or immediately after use.
- Allow the device to cool down completely before storing.
- Do not wrap the power cord around the device when hot.
- If the power cord is damaged, it must be replaced by the manufacturer, its service agent, or similarly qualified persons in order to avoid a hazard.

## SPECIFICATIONS

Feature	Detail
Brand	ANGENIL
Model Number	AN-068B
Product Dimensions (L x W x H)	30 x 3.8 x 3.8 cm (11.8 x 1.5 x 1.5 inches)
Product Weight	600 grams (1.32 lbs)
Material	Titanium
Color	Gold
Power Source	Corded Electric
Voltage	100-240V (Dual Voltage)
Max Temperature Setting	232.2 °C (450°F)
Heat-up Time	30 seconds
Automatic Shut-off	After 60 minutes
Cord Type	360° Swivel Cord

## WARRANTY AND SUPPORT

The ANGENIL Nano Titanium Flat Iron comes with a **2-year manufacturer's warranty**, covering defects in materials and workmanship under normal use.

For warranty claims, technical support, or any inquiries regarding your product, please contact ANGENIL customer service. You can typically find contact information on the product packaging or through the seller's page where you purchased the item. For purchases made on Amazon, you can visit the [ANGENIL seller page](#) for support options.