

VITCOCO 001

VITCOCO 5 Megapixel 1920P HD Otoscope Ear Cleaner Instruction Manual

Model: 001

1. INTRODUCTION

Thank you for choosing the VITCOCO 5 Megapixel 1920P HD Otoscope Ear Cleaner. This device is designed to provide a clear visual inspection of the ear canal and assist in ear cleaning. This manual provides essential information for the safe and effective use of your otoscope. Please read it thoroughly before operation and retain it for future reference.



Image 1.1: VITCOCO Otoscope connected to a smartphone, showing a clear view of the ear canal.

2. SAFETY INFORMATION

- This device is intended for visual inspection and gentle ear cleaning. It is not a medical device for diagnosis or treatment of ear conditions. Consult a medical professional for any ear health concerns.
- Exercise extreme caution when inserting the otoscope into the ear canal. Avoid excessive force or deep insertion to prevent injury to the eardrum or ear canal.
- Always use the provided silicone ear tips to protect the ear canal. A protective ring is integrated to safeguard sensitive areas, especially when used on children.
- The otoscope features an intelligent temperature control system to maintain a safe temperature during use (ear spoon 20-25°C, handle 30-34°C). If the device feels uncomfortably warm, discontinue use immediately.
- The lens of the otoscope is IP67 waterproof and can be rinsed with water or alcohol. The main body of the otoscope is not waterproof; do not immerse it in liquids.

- Keep out of reach of children. Adult supervision is required if used on children.



Image 2.1: The otoscope in use, demonstrating its application for visual ear inspection. Note the emphasis on gentle use, especially for sensitive users.

3. PACKAGE CONTENTS

Verify that all items are present in the package:

- VITCOCO Otoscope
- USB-C Charging Cable
- Box with 5 Silicone Ear Tips
- Instruction Manual

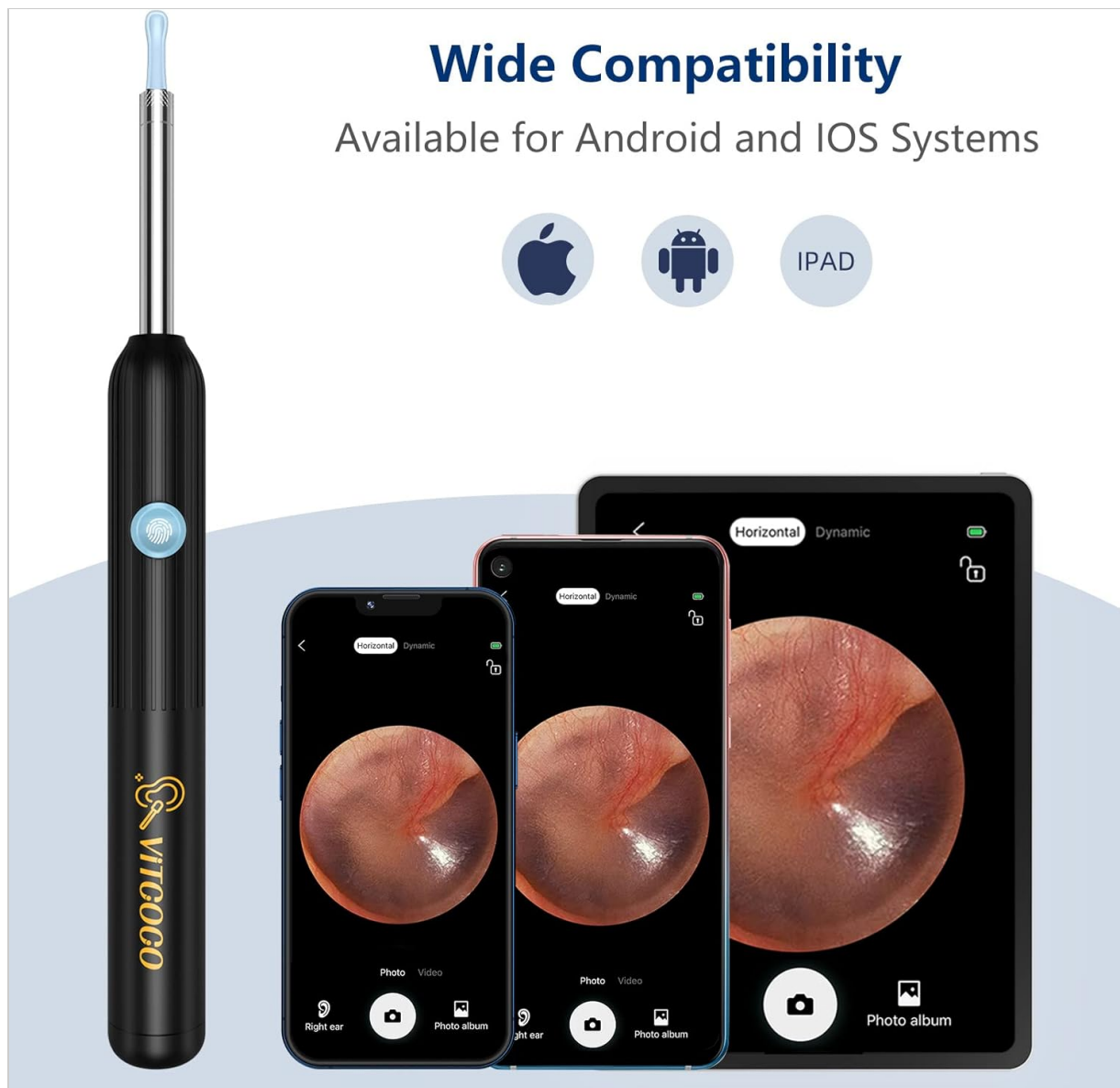


Image 3.1: All components included in the VITCOCO Otoscope package.

4. PRODUCT OVERVIEW

The VITCOCO Otoscope features advanced technology for clear and safe ear inspection:

- **High-Resolution Camera:** 5 Megapixel, 1920P HD camera for detailed images and videos.
- **Illumination:** Equipped with 6 powerful LED lights to illuminate the ear canal.
- **Compact Design:** Ultra-small 3.9mm lens diameter for comfortable insertion.
- **Stable Viewing:** 6-axis gyroscope and 360° wide-angle lens ensure a stable image regardless of rotation.
- **Smart Temperature Control:** Maintains optimal temperatures for user comfort and safety.
- **Wireless Connectivity:** Fast 2.4GHz WiFi chip for seamless image transmission to your smartphone or tablet.
- **Long Battery Life:** 350mAh battery provides approximately 90 minutes of continuous use.
- **Waterproof Lens:** IP67 rated lens for easy cleaning.



Image 4.1: Detailed view of the otoscope's camera system, including the 5 Megapixel HD camera and 6 LED lights.

6-axis gyroscope & 360° wide-angle

No matter how the ear camera lens is rotated, the imaging angle will not deviate



Image 4.2: The 6-axis gyroscope ensures a stable, non-deviating image angle during use.

Intelligent Temperature Control Design

Comprehensive protection against overheating and ear protection



Image 4.3: Key components and intelligent temperature control design of the otoscope.

5. SETUP

Follow these steps to set up your VITCOCO Otoscope:

1. **Download the App:** Scan the QR code below or visit <http://qr19.cn/CRUIhc> to download the "Suear" application from the App Store (iOS) or Google Play Store (Android). The app is compatible with Android 4.4+ and iOS 9.0+ devices.
2. **Power On:** Press and hold the power button on the otoscope for approximately 5 seconds until the indicator light turns on.
3. **Connect to Wi-Fi:** On your smartphone or tablet, go to your Wi-Fi settings and connect to the network named "Suear-X7-XXXX" (the last four characters will vary).
4. **Open App:** Return to the "Suear" app and click the home icon to enter the device interface. You should now see a live view from the otoscope camera.

Quatre étapes faciles pour commencer



Image 5.1: Visual guide for the four-step setup process.

Smart Wifi Chip

Fast image transmission,
smoother picture



Image 5.2: The integrated Smart WiFi Chip ensures fast and smooth image transmission.



Image 5.3: The otoscope offers wide compatibility with various mobile operating systems.

6. OPERATING INSTRUCTIONS

Before use, ensure the otoscope is fully charged and connected to your device via the "Suear" app.

1. **Attach Ear Tip:** Select a suitable silicone ear tip and gently screw it onto the otoscope's camera head. Ensure it is securely fastened.
2. **Positioning:** Carefully insert the otoscope into the ear canal while observing the live feed on your connected device. Adjust the angle slowly to get a clear view.
3. **App Functions:** The "Suear" app provides various functions:
 - **Photo/Video:** Capture images or record videos of the ear canal.
 - **Lens Mode:** Switch between different viewing modes.
 - **Battery Display:** Monitor the remaining battery life.
 - **Lock/Unlock:** Stabilize the image.
 - **Landscape/Portrait:** Adjust screen orientation.
 - **Left/Right Ear:** Optimize the camera's orientation for the respective ear.
4. **Cleaning:** Use the ear tip to gently remove visible earwax. Do not push earwax deeper into the canal. If

resistance is met, stop immediately.

5. **Multi-purpose Use:** The otoscope can also be used for visual inspection of other areas such as the mouth, nose, or even for pets, always with appropriate caution.



Image 6.1: Proper attachment of the silicone ear tip and the compact size of the otoscope.



Image 6.2: Examples of the otoscope's application for various visual inspections.

7. MAINTENANCE

- **Cleaning the Lens:** After each use, gently remove the silicone ear tip. The camera lens (IP67 waterproof) can be cleaned by rinsing with water or wiping with an alcohol swab. Ensure the lens is dry before storing. Do not immerse the main body of the otoscope.
- **Cleaning Ear Tips:** The silicone ear tips can be washed with soap and water or disinfected with alcohol. Ensure they are completely dry before reuse or storage.
- **Charging:** Connect the provided USB-C cable to the charging port on the otoscope and to a standard USB power adapter (not included). A full charge provides approximately 90 minutes of continuous operation or 120 days of standby time.
- **Storage:** Store the otoscope and its accessories in a clean, dry place away from direct sunlight and extreme temperatures.



Image 7.1: Information on the IP67 waterproof lens for cleaning and the dual thermostat system.

8. TROUBLESHOOTING

- **No Image on App:**
 - Ensure the otoscope is powered on (long press the button).
 - Verify your phone/tablet is connected to the otoscope's Wi-Fi network ("Suear-X7-XXXX").
 - Close and reopen the "Suear" app.
 - Restart both the otoscope and your device.
- **Poor Image Quality:**
 - Clean the camera lens as described in the Maintenance section.
 - Ensure there is sufficient light from the otoscope's LEDs.
 - Check for any obstructions on the lens or ear tip.
- **Device Not Charging:**
 - Ensure the USB-C cable is securely connected to both the otoscope and the power source.
 - Try a different USB-C cable or power adapter.
 - Check if the charging port is clean and free of debris.
- **Device Overheating:**
 - The otoscope has intelligent temperature control. If it feels excessively hot, discontinue use immediately and allow it to cool down.
 - Ensure proper ventilation during use.

9. SPECIFICATIONS


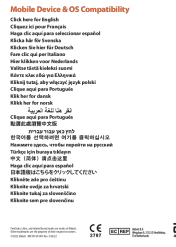
Brand	VITCOCO
Model Number	001

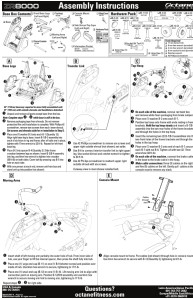

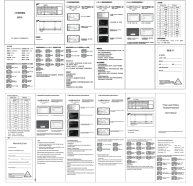
Camera Resolution	5 Megapixel, 1920P HD
LED Lights	6
Lens Diameter	3.9mm
Battery Capacity	350mAh
Working Time	Approx. 90 minutes
Standby Time	Approx. 120 days
Charging Port	USB-C
Wireless Connectivity	2.4 GHz Wi-Fi
Compatibility	Android 4.4+, iOS 9.0+
Waterproof Rating	IP67 (Lens only)
Product Dimensions	17.5 x 6.5 x 1.9 cm
Product Weight	50 grams

10. WARRANTY AND SUPPORT

For warranty information and customer support, please refer to the documentation included with your product packaging or contact VITCOCO customer service through their official website. Please have your model number (001) and purchase details available when seeking support.

Related Documents - 001

	<p>VITCOCO S3 Intelligent Visual Ear Picker User Manual and Guide</p> <p>Comprehensive user manual for the VITCOCO S3 Intelligent Visual Ear Picker (Otoscope). Learn how to set up the Endscope Tool app, connect via Wi-Fi, use the device features, and troubleshoot common issues. Includes product specifications, precautions, and contact information.</p>
	<p>FreeStyle LibreLink Mobile Device and Operating System Compatibility Guide</p> <p>This guide details mobile device and operating system compatibility for the FreeStyle LibreLink app, ensuring optimal NFC scan performance, Bluetooth connectivity, and sensor compatibility.</p>

	<p>Octane Fitness ZR8000 Zero Runner Assembly Instructions</p> <p>Detailed assembly instructions for the Octane Fitness ZR8000 Zero Runner elliptical trainer, including parts identification, step-by-step setup for base, transfer link, top hoop, moving arms, and console, with essential tools and troubleshooting tips.</p>
	<p>FreeStyle LibreLink Mobile Device and OS Compatibility Guide</p> <p>This guide provides compatibility information for the FreeStyle LibreLink app with various mobile devices and operating systems, including smartwatch notification mirroring. It is regularly updated by Abbott.</p>
	<p>MRSVI B033 Three Layer Folding Touchpad Keyboard User Manual</p> <p>User manual for the MRSVI B033, a three-layer folding wireless keyboard with an integrated touchpad. Provides setup, connection instructions for Windows, Android, and iOS, product features, system requirements, maintenance, troubleshooting, safety guidelines, and technical specifications.</p>