

UUMAO B09H5PFZWD

UUMAO Invisible Wireless Charger User Manual

Model: B09H5PFZWD

1. INTRODUCTION

Thank you for choosing the UUMAO Invisible Wireless Charger. This product is designed to provide convenient and discreet wireless charging for compatible devices by installing the charging pad underneath a non-metallic surface. Please read this manual carefully before use to ensure proper installation and operation.

2. SAFETY INFORMATION

- Do not place metal objects, magnets, credit cards, or other foreign objects between your device and the charging pad, as this may interfere with charging or damage the charger.
- Ensure the charging surface is non-metallic and within the specified thickness range (0.19-0.59 inches / 5-15mm).
- Avoid exposing the charger to water, moisture, or extreme temperatures.
- Do not disassemble, repair, or modify the product.
- Use only the provided PD 20W adapter and Type-C cable to ensure optimal performance and safety.
- This charger provides over-charge, over-current, over-voltage, and short-circuit protection.

3. PACKAGE CONTENTS

Please verify that all items are present in your package:

- UUMAO Long-Distance Wireless Charger Unit
- PD 20W Adapter
- Type-C Cable

- Wireless Charger-Charging Label Sticker
- User Manual (affixed to product)
- Screws (x5)
- Packing Box

PACKING LIST

①

1,Product Description:

This product is a wireless charging transmitter for standard Qi.The shortest distance is 5 mm, the best distance is 10 mm, and the longest distance is 13 mm.

2,Scenes To Be Used:

Suitable for installation under thick desktops. Suitable for marble, wood, glass and other non-metallic non-conductive tables.

3,How To Install:

The first way: fixed with double-sided tape.Tear off the release paper on the surface of the blue double-sided tape, and fix the product directly under the desktop. The second way: use screws to fix.The four corners of the product can be fixed under the tabletop with four screws.

4,safety protection:

It has safety protection functions such as overcharge, overcurrent, and overtemperature.

| | | |
|--|--|--|
| WARN: 1. Do not charge at a distance less than 5MM.If the receiving distance is less than 5MM,the charging andreceiving equipment may be damaged | WARN: 2. Do not charge at a distance greater than 13MM.More than 13MM. It may cause Apple 12 to fail to charge.Or the phone case is too thick to charge. | WARN: 3. Do not use metal or other conductors that are impermeable to electromagnetic waver. 4.Do not charge the product near a heat source; |
|--|--|--|

① Long-Distance Wireless Charger

② Wireless charging Signal detector

③ Charging area mark label

④ 1.5m 12V3A adapter

⑤ Screw*5

②

Wireless Charging Signal Detector.
When the wireless charging signal is detected, The lamp beads will light up. The brightest place is where the signal is strongest.



④



③



⑤



Image: The package contents include the wireless charger unit, power adapter, Type-C cable, charging area sticker, and screws.

4. SETUP AND INSTALLATION

The UUMAO Invisible Wireless Charger can be installed under various non-metallic surfaces such as wood, granite, marble, glass, plastic, and quartz. The optimal charging distance is between 0.19 inches (5mm) and 0.59 inches (15mm).

Applicable Desktop



Wooden table



Glass table



Marble table



Plastic table

Please Note:

There should be no other metal objects between the mobile phone and the wireless charger, please check before use.

External accessories such as metal casings, magnets, credit cards, handles, and brackets can interfere with charging.

Image: This diagram illustrates compatible desktop materials including wooden, glass, marble, and plastic tables.

Suitable For Most Desktops

- Desk
- Dining table
- Dedside table
- Coffee table



Image: A side profile view demonstrating the charger's ability to charge through desktops with a thickness between 5mm and 13mm.

4.1. Choosing an Installation Location

Select a flat, non-metallic surface under your desk, bedside table, or other furniture where you wish to have wireless charging. Ensure the chosen spot is free from obstructions and metal components.

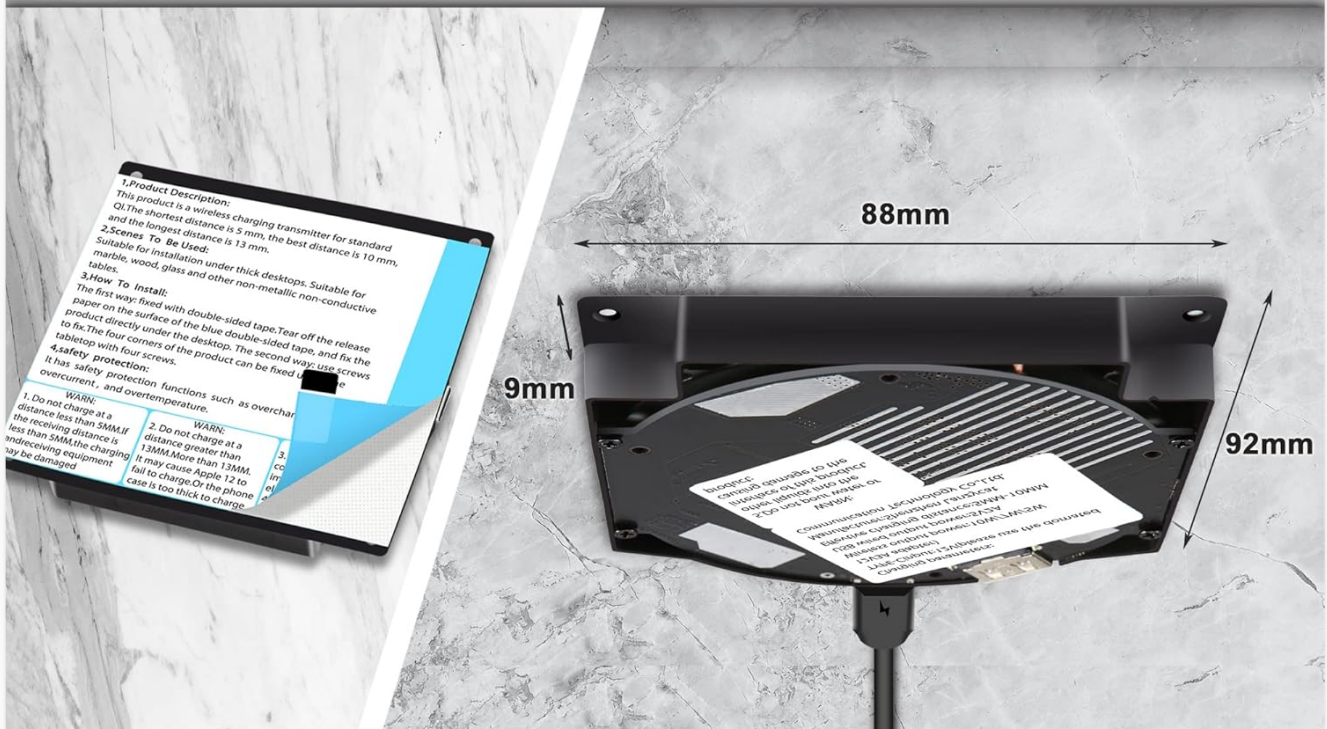
4.2. Installation Methods

There are two primary methods for installing the charger:

1. **Using Screws:** The four corners of the product are designed for screw installation. Secure the charger firmly to the underside of the table top using the provided screws.
2. **Using Double-Sided Tape:** For a less permanent installation, peel off the release paper from the blue double-sided tape on the charger. Press the charger firmly onto the desired location under the desktop.

Installation Method

1: use screws to fix. The four corners of the product can be fixed under the table top with four screws.



2: fixed with double-sided tape. Tear off the release paper on the surface of the blue double-sided tape, and fix the product directly under the desktop.

Image: This graphic illustrates two installation options: securing the charger with screws or attaching it with double-sided tape.

4.3. Finding the Optimal Charging Position

After installation, use the standard charging area signal detector (included) to find the best charging position on the top surface of your furniture. The brightest light on the detector indicates the optimal charging spot. Apply the charging area label sticker to this spot for easy reference.

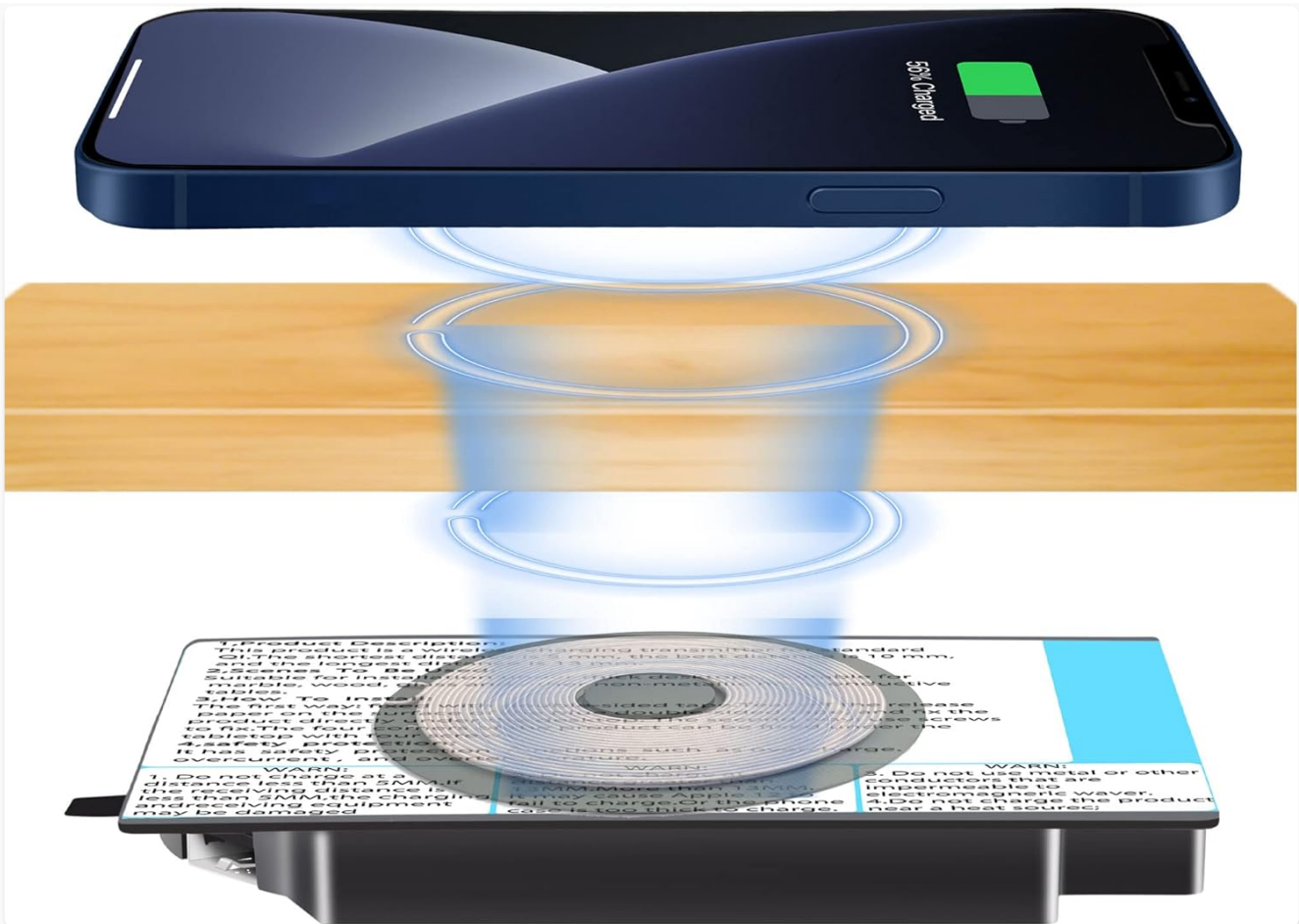


Image: A visual representation of a smartphone charging wirelessly through a wooden desk, with the invisible charger mounted underneath. Blue rings illustrate the wireless power transfer.

5. OPERATING INSTRUCTIONS

5.1. Connecting Power

Connect the provided Type-C cable to the wireless charger unit and the PD 20W adapter. Plug the adapter into a standard wall outlet.

5.2. Charging Your Device

Place your compatible wireless charging device (e.g., smartphone, earphones) directly on the marked charging area on the surface of your furniture. The device should begin charging automatically. The indicator light on the charger, hidden under the table, will not disturb your sleep if installed in a bedroom.

5.3. Compatibility

This wireless charger is universally compatible with all Qi-standard wireless charging phones and earphones. Compatible Apple devices include iPhone 14/13/13 Pro/13 Mini/13 Pro Max/12/12 Pro/12 Pro Max/12 Mini/SE/11/11 Pro/11 Pro Max/X/Xs/Xs Max/8/8 Plus. Compatible Samsung phones include Galaxy S20, S20+, S20 Ultra, S10, S10 Plus, S10E, S9 Plus. **Note: This charger cannot wirelessly charge smartwatches.**

5.4. USB-5V Interface

The charger unit includes a reserved USB-5V interface. This port can be used to plug in a charging cable for other devices such as iPads or smartwatches that require wired charging.

More Scenes

Bring more convenience



Office



Cafe



Meeting room



Hotel



Restaurant



Bookstore

Image: A collage showcasing the versatility of the invisible wireless charger in different environments, including offices, cafes, meeting rooms, hotels, restaurants, and bookstores.

6. MAINTENANCE

- Keep the charger clean and free from dust. Use a soft, dry cloth to wipe the surface.
- Do not use harsh chemicals or abrasive cleaners.
- Ensure the area around the charger is well-ventilated to prevent overheating.
- Regularly check the power cable for any signs of damage.

7. TROUBLESHOOTING

- **Device not charging:**
 - Ensure your device is Qi-compatible.
 - Verify the charger is properly connected to power.

- Check the placement of your device on the charging area. Use the signal detector to confirm the optimal spot.
- Remove any metal objects, magnets, or thick phone cases (especially those containing metal) between the device and the charging surface.
- Ensure the desktop thickness is within the 0.19-0.59 inch (5-15mm) range.

- **Slow charging:**

- Ensure you are using the provided PD 20W adapter and Type-C cable.
- Confirm your device supports fast wireless charging.
- Check for proper alignment of the device on the charging spot.

- **Indicator light not on:**

- Verify the power adapter is securely plugged into both the charger and the wall outlet.
- Try a different power outlet.

8. SPECIFICATIONS

| Feature | Specification |
|--------------------|---|
| Product Dimensions | 5.31 x 4.53 x 0.79 inches |
| Item Weight | 7.4 ounces |
| Brand | UUMAO |
| Connector Type | USB (for power input) |
| Input Voltage | 12 Volts |
| Amperage | 0.83 Amps |
| Total USB Ports | 2 (1 for power input, 1 reserved USB-5V output) |
| Charging Distance | 0.19in - 0.59in (5mm - 15mm) |
| Special Feature | Long-distance invisible wireless charging under the table |

9. WARRANTY AND SUPPORT

UUMAO provides reliable customer service. For any issues or inquiries, please refer to the contact information provided with your product or visit the official UUMAO store on Amazon: [UUMAO Store](#).