

Manuals+

[Q & A](#) | [Deep Search](#) | [Upload](#)

manuals.plus /

> [PHILIPS](#) /

> [Philips Shower Filter AWP1775CH Instruction Manual: Water Softener for Hard Water Shower Head Filtration](#)

PHILIPS AWP1775CH

Philips Shower Filter AWP1775CH Instruction Manual

Water Softener for Hard Water Shower Head Filtration

INTRODUCTION

This manual provides instructions for the installation, operation, and maintenance of your Philips Shower Filter AWP1775CH. This product is designed to enhance your showering experience by reducing various impurities in your water supply. Please read this manual thoroughly before use and retain it for future reference.





Image: The Philips Shower Filter AWP1775CH in its chrome finish, a cylindrical device designed for shower water filtration.

SETUP AND INSTALLATION

The Philips Shower Filter AWP1775CH is designed for easy installation without the need for special tools or a plumber. It is compatible with most handheld and rainfall shower heads.

Components Overview

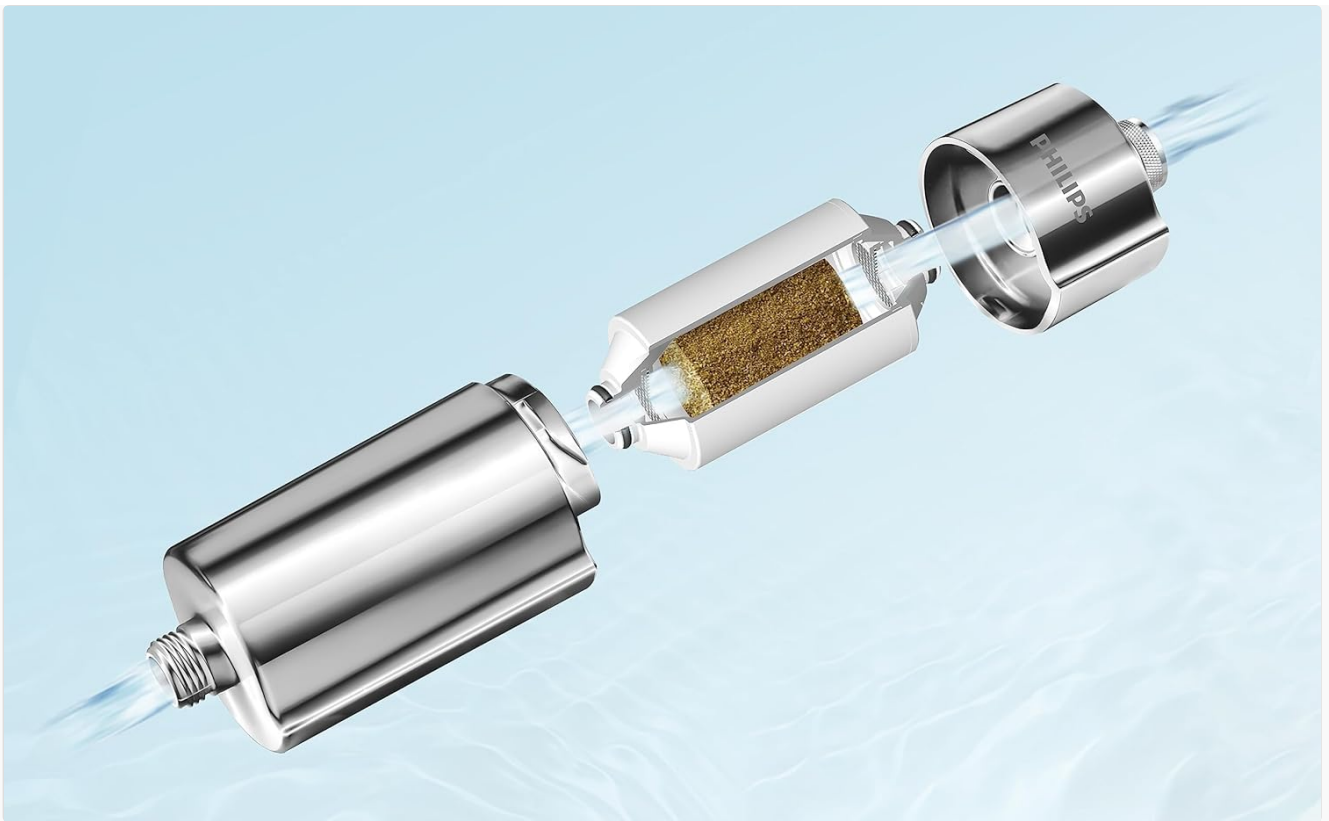
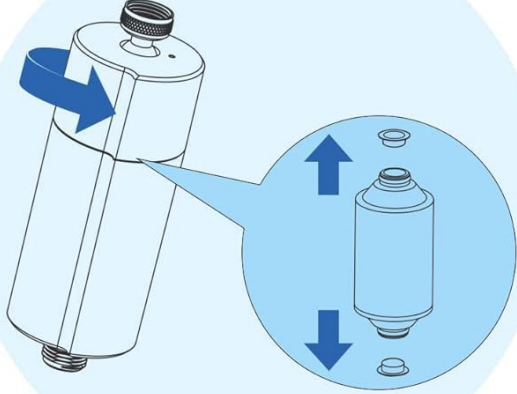


Image: An exploded diagram showing the internal components of the Philips Shower Filter, including the outer casing and the filter cartridge.

Installation Steps

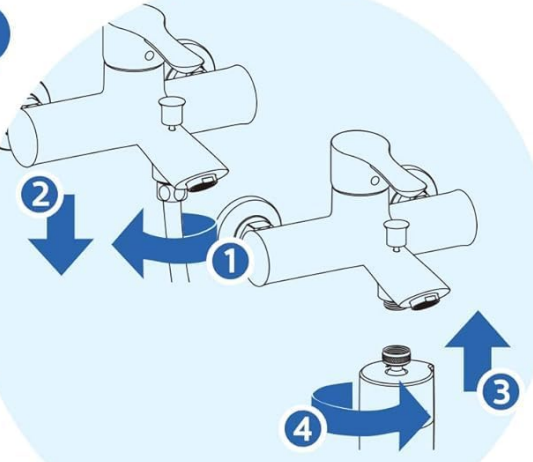
1. **Prepare the Filter Cartridge:** Unscrew the filter casing. Take out the filter cartridge and remove any protective covers from both ends. Place the cartridge back into the casing, ensuring it is seated correctly.
2. **Disconnect Shower Hose:** Carefully remove the shower hose from the water mixing valve (faucet).
3. **Connect Filter to Valve:** Connect the Philips shower filter to the water mixing valve at the water inlet end. Hand-tighten until secure.
4. **Check for Leaks:** Turn on the tap for 2-3 minutes to flush the filter and check for any leaks.
5. **Connect Shower Hose:** Connect your shower hose to the water outlet end of the filter. Hand-tighten until secure.

1



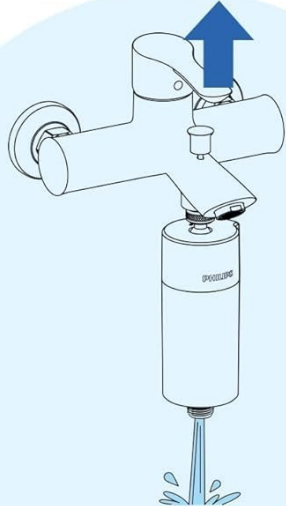
Take out the filter cartridge and remove the covers at both ends of the cartridge. Put the cartridge back in the case.

2



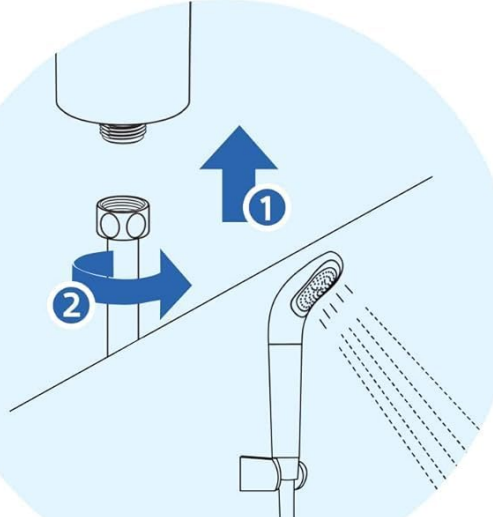
Remove the hose from the water mixing valve, and connect and tighten the shower filter with the valve from the water inlet end.

3



Turn on the tap for 2-3 minutes to check if there is any leakage.

4



Connect the hose to the water outlet end of the filter.

Image: A four-step diagram illustrating the process of installing the shower filter between the shower arm and the shower hose.



Image: The Philips Shower Filter shown installed in a shower setup, connected to a handheld showerhead.

OPERATING PRINCIPLES

The Philips Shower Filter utilizes a multi-stage filtration process to improve water quality.

KDF Filtration Technology

The core of this filter is its 100% KDF (Kinetic Degradation Fluxion) material, a combination of copper and zinc. KDF

works through a redox (reduction-oxidation) reaction to reduce free chlorine, heavy metals (such as lead, mercury, and iron), hydrogen sulfide, and other impurities. This process helps to improve water quality, which can contribute to healthier skin and hair.

100% KDF Filtration

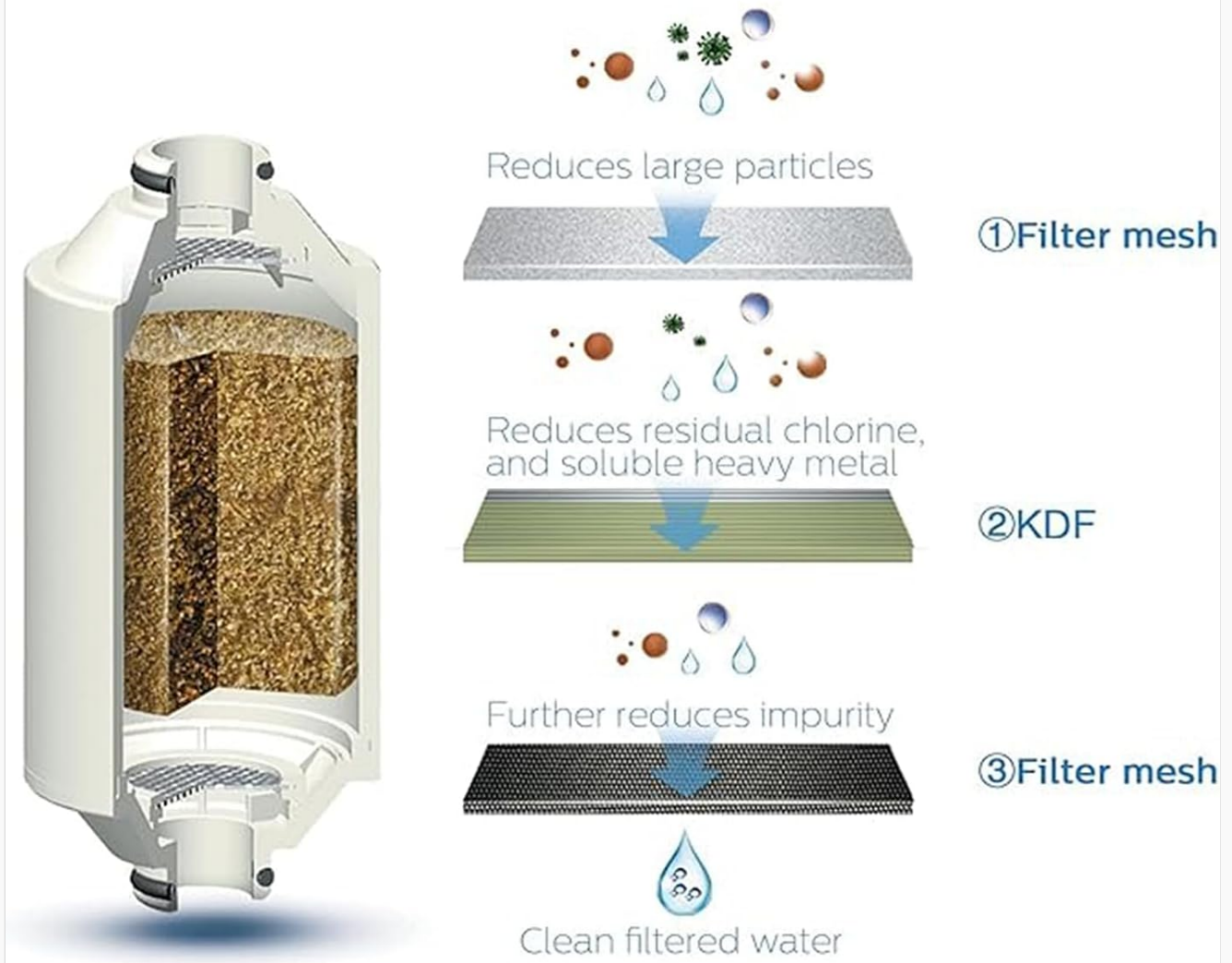


Image: A diagram detailing the three stages of filtration: initial filter mesh for large particles, KDF for chlorine and heavy metals, and a final filter mesh for further impurity reduction, resulting in clean filtered water.

Water Flow and Temperature

The filter is designed to maintain a high water flow rate, typically 2.1 gallons per minute (8 liters per minute), ensuring no significant restriction to your shower experience. It is constructed from anti-scald material, allowing it to adapt to both hot and cold water temperatures without compromising performance.

Compatible with most handheld shower



Cleaner water without impurities for the ultimate shower experience.

Quick and easy installation in 2 minutes without using any tools.



Made of anti-scald material to fully adapt to the temperature of your shower water.

Three-stage filtration that reduces residual chlorine, rust, and sediments.



Large filtration capacity, filters up to 13,208 gallons of water.

Image: An infographic explaining KDF technology and highlighting key features such as compatibility, quick installation, three-stage filtration, skin/hair benefits, temperature adaptability, and large filtration capacity.

MAINTENANCE

Regular maintenance, primarily filter cartridge replacement, is essential for optimal performance.

Filter Cartridge Replacement

The filter cartridge (model AWP175) has a capacity of up to 50,000 liters (13,208 gallons) and should be replaced every 4-6 months. The replacement frequency may vary depending on your local tap water quality and usage.



Cartridge Lifetime



The filter lasts up to 6 months and has a filtering capacity of up to 13200 gallons.

4~6
months

13200
gallons

*Depending upon the tap water quality in your area.

Image: A diagram illustrating the filter cartridge and its lifespan, indicating 4-6 months or 13,200 gallons capacity.

Replacement Procedure

1. Turn off the water supply to the shower.
2. Unscrew the shower filter casing from the shower arm and the shower hose.
3. Open the filter casing and remove the old cartridge.
4. Insert a new Philips AWP175 filter cartridge, ensuring it is correctly oriented.
5. Close the filter casing securely.
6. Reinstall the filter onto the shower arm and connect the shower hose.
7. Turn on the water supply and flush the filter for a few minutes to remove any air and check for leaks.

TROUBLESHOOTING

Problem	Possible Cause	Solution
Water leakage at connections	Loose connections, worn O-rings, or incorrect installation.	Ensure all connections are hand-tightened. Check O-rings for damage and replace if necessary. Re-install following the setup steps.
Reduced water flow	Clogged filter cartridge, air trapped in the system.	Flush the filter for several minutes. If flow remains low, the cartridge may need replacement. Ensure the cartridge protective covers were removed during installation.
Filter cartridge difficult to remove/install	Over-tightened casing, mineral buildup, or cartridge jammed.	Apply gentle, firm pressure to unscrew the casing. For stubborn cases, try using a rubber grip. Ensure the new cartridge is aligned correctly before tightening.
No noticeable improvement in water quality	Filter cartridge expired or not installed correctly.	Check the date of last cartridge replacement. Replace if it's been 4-6 months or more. Verify correct installation of the cartridge and filter unit.

SPECIFICATIONS

Feature	Detail
Model Number	AWP1775CH
Filter Cartridge Model	AWP175
Material	Iron (housing), KDF (filtration media)
Product Dimensions	3.5 x 4 x 9 inches (8.9 x 10.2 x 22.9 cm)
Item Weight	1.23 pounds (0.56 kg)
Filtration Capacity	Up to 50,000 L / 13,208 gallons
Filter Lifespan	4-6 months (depending on water quality and usage)
External Testing Certification	NSF
Product Benefits	Reduces Chlorine and Impurities, Ensures Safe Use, High Water Flow Rate, Long Filtration Capacity

6.85"/17.4cm

PHILIPS

2.4"/6.1cm

- Skin and hair protection
- Reduces chlorine, lead and pesticides
- high water flow
no restriction
2.1 gal/min
- Filter capacity
13,200 gal/50,000L
4~6 months

Image: A visual representation of the Philips Shower Filter's dimensions (6.85"/17.4cm height, 2.4"/6.1cm width) and key benefits including skin/hair protection, reduction of chlorine/lead/pesticides, high water flow (2.1 gal/min), and filter capacity.



Image: A woman enjoying a shower, illustrating the benefit of filtered water for skin and hair protection.

WARRANTY AND SUPPORT

For detailed warranty information and customer support, please refer to the official Philips website or contact Philips customer service directly. Keep your purchase receipt as proof of purchase for any warranty claims.



