

Vikeri 1

TASCO Low Glow 12 MP Trail Camera User Manual

Brand: **Vikeri** | Model: **1**

INTRODUCTION

This manual provides comprehensive instructions for the setup, operation, and maintenance of your TASCO Low Glow 12 Mega Pixels Trail Camera. Designed for reliability and ease of use, this camera captures high-quality images and 720P video, making it an excellent tool for wildlife monitoring, hunting, and security surveillance.



Figure 1: Front view of the TASCO Low Glow 12 MP Trail Camera, showcasing its compact design and IR flash array.

Key Features:

- **Crystal Clear 12 Mega Pixel Images:** Capture high-resolution still photographs.

- **720P Video Recording:** Record clear video footage.
- **PIR Motion Sensor with 70FT Range:** Detects movement up to 70 feet away for automatic capture.
- **70FT Low Glow IR Flash:** Provides illumination for night captures without startling wildlife, with a range of up to 70 feet.
- **Long Battery Life:** Operates for up to 12 months on 8 AA batteries (not included).
- **Durable Design:** IP67 International Protection Rating ensures resistance to dust and water.

WHAT'S IN THE BOX

Upon unpacking your TASCO Trail Camera, please verify that all components are present and in good condition:

- TASCO Low Glow 12 MP Trail Camera (OD Green)
- Mounting Strap



Figure 2: Contents of the box, including the trail camera and the mounting strap.

SETUP

1. Battery Installation

1. Open the camera housing latch.
2. Locate the battery compartment.
3. Insert 8 new AA alkaline or lithium batteries, ensuring correct polarity (+/-) as indicated inside the compartment.
4. Close the battery compartment securely.

2. SD Card Insertion

1. With the camera housing open, locate the SD card slot.
2. Insert a formatted SD card (up to 32GB, Class 10 recommended) into the slot until it clicks into place. Ensure the card is inserted in the correct orientation.
3. To remove, push the card in slightly until it springs out.

3. Mounting the Camera

1. Select a suitable location for your camera, such as a tree or post, ensuring a clear view of the desired

area.

2. Thread the provided mounting strap through the slots on the back of the camera.
3. Securely fasten the strap around the mounting surface. Adjust the camera angle as needed.

OPERATING YOUR TRAIL CAMERA

1. Powering On/Off

- To power on, slide the power switch to the 'ON' position. The indicator light will briefly illuminate.
- To power off, slide the power switch to the 'OFF' position.

2. Mode Selection

The camera typically features different operating modes, such as Photo, Video, or Photo+Video. Refer to the on-screen menu (if available) or physical switch to select your desired capture mode.

3. PIR Motion Sensor

The Passive Infrared (PIR) sensor detects heat and motion within its 70-foot range. When motion is detected, the camera will trigger and capture an image or video according to your selected settings.

4. Low Glow IR Flash

For night captures, the camera utilizes a 70-foot Low Glow IR flash. This technology emits infrared light that is nearly invisible to the human eye and most animals, allowing for discreet night photography and videography.

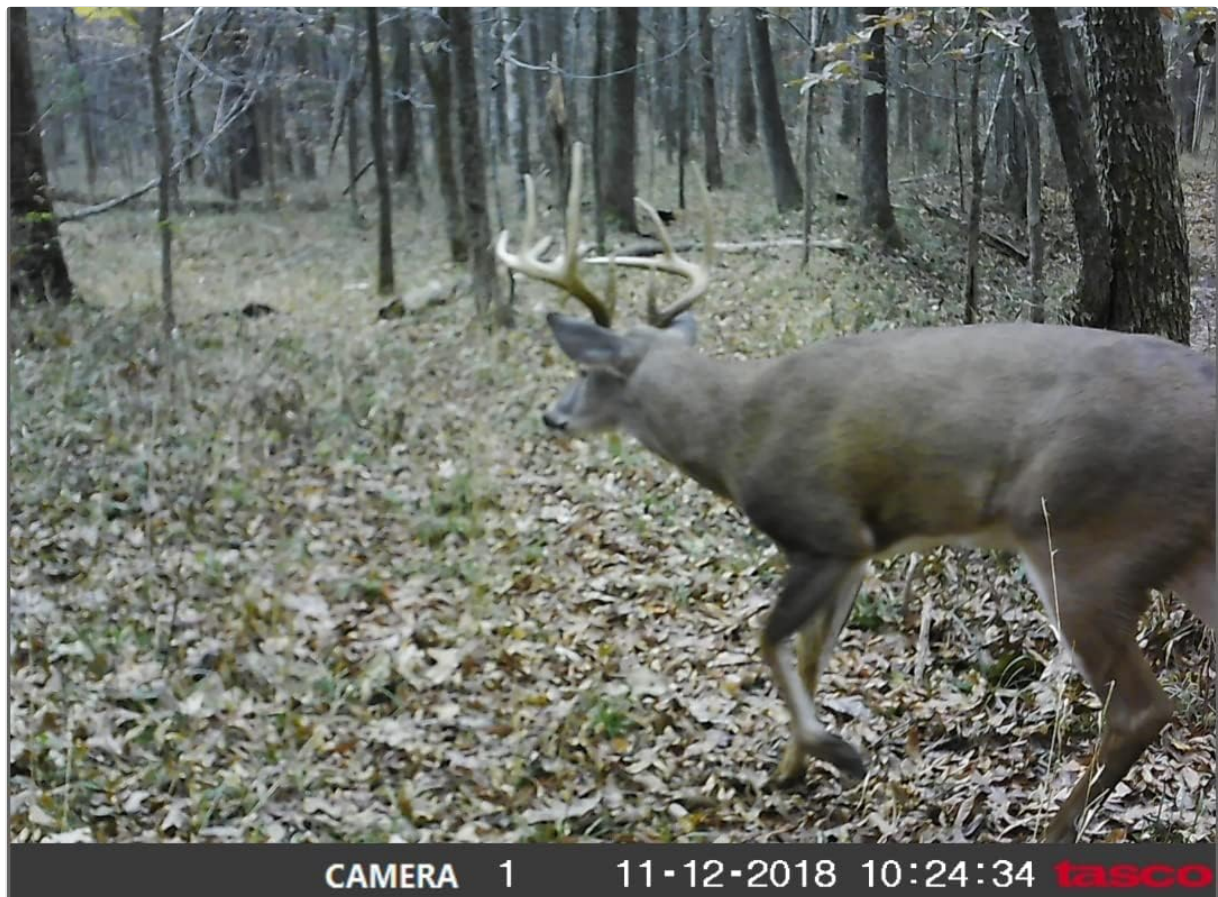


Figure 3: Example of a daytime image captured by the trail camera, showing a deer in its natural habitat.



Figure 4: Example of a nighttime image captured by the trail camera, demonstrating the effectiveness of the Low Glow IR flash.

5. Viewing Captured Media

To view images and videos, remove the SD card from the camera and insert it into a compatible device such as a computer or an SD card reader. Navigate to the DCIM folder on the SD card to access your media files.

MAINTENANCE

1. Cleaning

- Gently wipe the camera lens and PIR sensor window with a soft, lint-free cloth. Avoid abrasive materials or harsh chemicals.
- Clean the camera body with a damp cloth as needed.

2. Battery Care

- Replace all batteries simultaneously with new ones. Do not mix old and new batteries or different battery types.
- Remove batteries if the camera will not be used for an extended period to prevent leakage.

3. Storage

- Store the camera in a cool, dry place away from direct sunlight and extreme temperatures.

TROUBLESHOOTING

Issue	Possible Cause	Solution
-------	----------------	----------

Issue	Possible Cause	Solution
Camera not powering on	Incorrect battery installation; Dead batteries; Corrupted SD card.	Check battery polarity; Replace all batteries; Remove SD card and try powering on.
Poor image/video quality	Dirty lens/sensor; Low light conditions; Object too far/close.	Clean lens and sensor; Ensure adequate lighting or proper IR flash usage; Adjust camera placement.
Video not playing on mobile devices (e.g., Apple products)	Video format incompatibility (AVI); Device limitations.	Use a computer to view videos; Convert video files to a compatible format; Use a dedicated SD card reader for your mobile device.
Short battery life	Frequent triggers; Cold weather; Low-quality batteries.	Reduce trigger sensitivity; Use lithium batteries in cold weather; Use high-quality alkaline or lithium batteries.

TECHNICAL SPECIFICATIONS

Feature	Specification
Effective Still Resolution	12 MP
Video Capture Resolution	720p
Video Capture Format	AVI
PIR Motion Sensor Range	70 FT
IR Flash Range	70 FT (Low Glow)
Power Source	8 x AA Batteries (not included)
Connectivity Technology	Wireless (Wi-Fi)
International Protection Rating	IP67
Product Dimensions (L x W x H)	6 x 4 x 3 inches
Item Weight	12 ounces
Color	OD Green
Included Components	Strap

WARRANTY AND SUPPORT

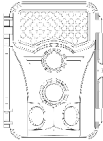
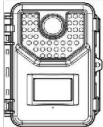
For warranty information, technical support, or service inquiries, please refer to the contact details provided with your product packaging or visit the official Vikeri website. Keep your purchase receipt as proof of

purchase for warranty claims.

For additional assistance, you may also contact the manufacturer, Tasco, directly through their official support channels.

© 2024 Vikeri. All rights reserved.

Related Documents

<div><p>MODEL: 4K Instruction Manual</p></div>	<p>Vikeri 4K Trail Camera Instruction Manual</p> <p>This manual provides comprehensive instructions for the Vikeri 4K Trail Camera, covering setup, operation, features, and troubleshooting. Learn how to install, configure, and maintain your trail camera for optimal wildlife monitoring.</p>
<div><p>English German Spanish French Italian</p><p>MODEL: A1 Instruction Manual</p></div>	<p>Vikeri A1 Trail Camera Instruction Manual</p> <p>This instruction manual provides detailed guidance on setting up and operating the Vikeri A1 Trail Camera. Learn about package contents, product diagrams, quick start procedures, power supply options, camera parameters, button functions, setting configurations, and warranty information.</p>