



Manuals.plus /

› COSTWAY /

› COSTWAY Portable Washing Machine User Manual

COSTWAY FP10012US-GR

COSTWAY Portable Washing Machine User Manual

Model: FP10012US-GR | Brand: COSTWAY

1. Introduction

This user manual provides essential information for the safe and efficient operation of your new COSTWAY Portable Washing Machine. Designed for compact living spaces such as dorms, RVs, and apartments, this twin-tub washing machine offers convenient laundry solutions. Please read this manual thoroughly before first use and retain it for future reference.



Figure 1: Front-side view of the COSTWAY Portable Washing Machine.

2. Product Features

- **Twin Tub Design:** Features two separate tubs for washing (13.2 lbs capacity) and spinning (8.8 lbs capacity), allowing simultaneous operation.
- **Compact & Portable:** Ideal for small living spaces like dorms, RVs, and apartments, with dimensions of 25" x 14.5" x 27.5" (L x W x H).
- **User-Friendly Controls:** Equipped with a large control panel and knobs for easy adjustment of washing/spinning time and mode selection.
- **Multiple Wash Modes:** Offers Soft, Standard, and Drain modes to accommodate various fabric types and laundry needs.
- **Powerful & Quiet Motor:** High-performance motor ensures efficient cleaning with minimal noise, contributing to energy savings.

- **Efficient Drainage System:** Includes a built-in drain pump, 51" drain hose, and filter to facilitate convenient and quick water drainage, preventing blockages.
- **Durable Construction:** Sturdy PP shell ensures long-term durability and resistance to breakage.

Washing Machine with Twin Tubs



T-shirt



Underwear



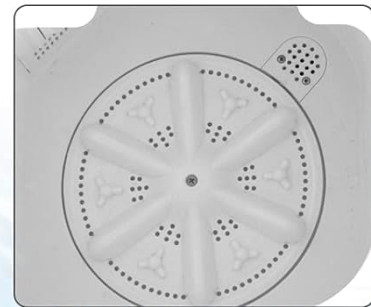
Quilt Cover



Baby Clothes



Jeans



Washing Capacity
13.2LBS



Spin Capacity
8.8LBS

Figure 2: Twin tub capacities for washing and spinning.

Powerful Motor & Drain Pump

- 280W in washing mode
- 160W in spin-drying mode



Figure 3: Illustration of the powerful motor and drain pump system.

3. Product Overview & Components

Familiarize yourself with the main parts of your portable washing machine:

- **Wash Tub:** For washing clothes (left side).
- **Spin Tub:** For spin-drying clothes (right side).
- **Control Panel:** Includes Wash Timer, Drain Selector, and Spin Timer knobs.
- **Water Inlet:** Connection point for the water supply hose.
- **Drain Hose:** For expelling dirty water.
- **Power Cord:** For electrical connection.
- **Filter:** Located in the wash tub to prevent debris from blocking the drain.
- **Safety Cover:** Protects the spin tub during operation.

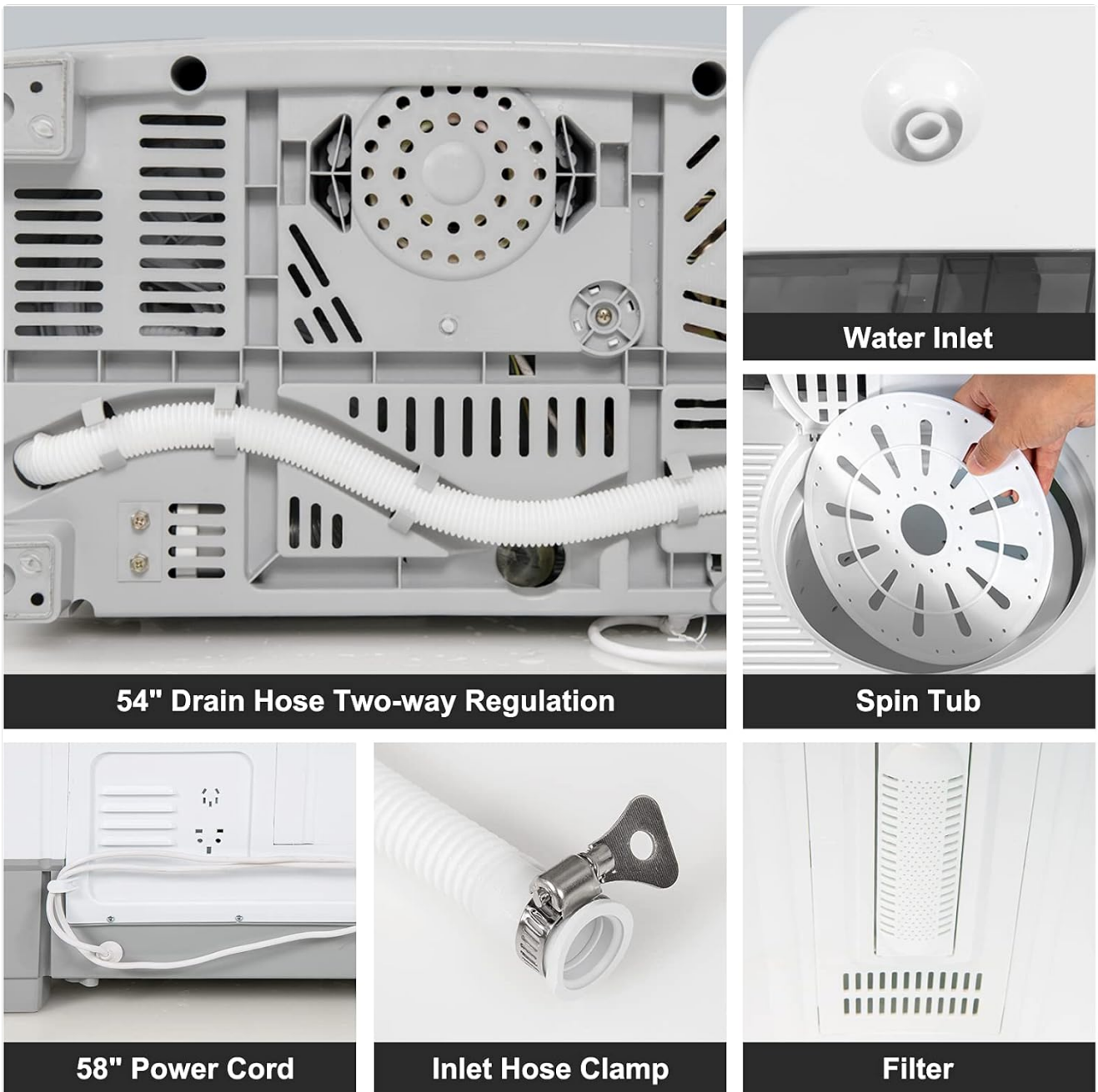


Figure 4: Detailed view of key components.

4. Setup

Follow these steps for initial setup:

1. **Unpacking:** Carefully remove the washing machine from its packaging. Note that a small amount of residual water inside is normal due to factory testing.
2. **Placement:** Place the machine on a firm, level surface. Ensure there is enough space around it for ventilation and operation. The dimensions are 25" (L) x 14.5" (W) x 27.5" (H).
3. **Connect Water Inlet Hose:** Attach the 42" water inlet pipe to the water inlet on the machine and to your faucet. Ensure a secure connection to prevent leaks.
4. **Position Drain Hose:** Place the 51" drain hose into a sink, bucket, or drain. Ensure the hose is not kinked or obstructed to allow for proper drainage.
5. **Power Connection:** Plug the 55" power cord into a suitable electrical outlet (120V/60HZ).

Product Dimensions

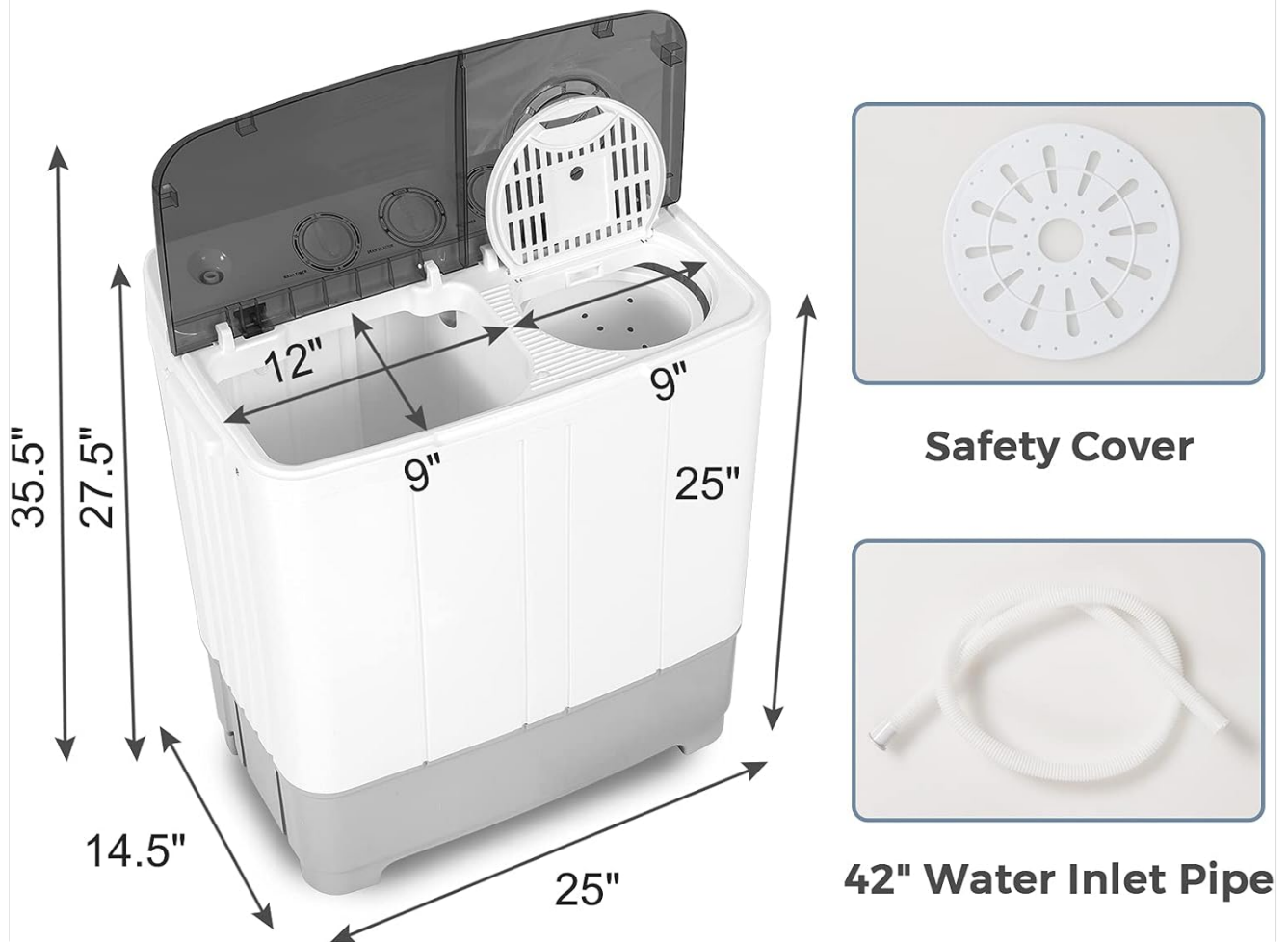


Figure 5: Product dimensions for proper placement.

5. Operating Instructions

Follow these steps to operate your washing machine:

1. **Load Laundry:** Open the lid of the wash tub and place clothes inside. Do not overload; the maximum washing capacity is 13.2 lbs.
2. **Add Detergent:** Pour the appropriate amount of laundry detergent directly into the wash tub.
3. **Fill with Water:** Use the water inlet hose to fill the wash tub with water to the desired level.
4. **Select Wash Mode:** Turn the 'Drain Selector' knob to select your desired wash mode: 'Soft' for delicate items, 'Standard' for regular laundry, or 'Drain' to empty the tub.
5. **Set Wash Timer:** Turn the 'Wash Timer' knob to set the washing duration (up to 15 minutes). The machine will start washing automatically.
6. **Spin-Drying (Optional):** After washing, transfer clothes from the wash tub to the spin tub. Ensure clothes are evenly distributed. Place the safety cover over the clothes.
7. **Set Spin Timer:** Close the spin tub lid and turn the 'Spin Timer' knob to set the spin duration (up to 5 minutes). The machine will begin spin-drying.
8. **Drain Water:** After washing or spinning, ensure the 'Drain Selector' knob is set to 'Drain' to empty the water from the tub.

Multi-function Control Panel

washing and spin simultaneously

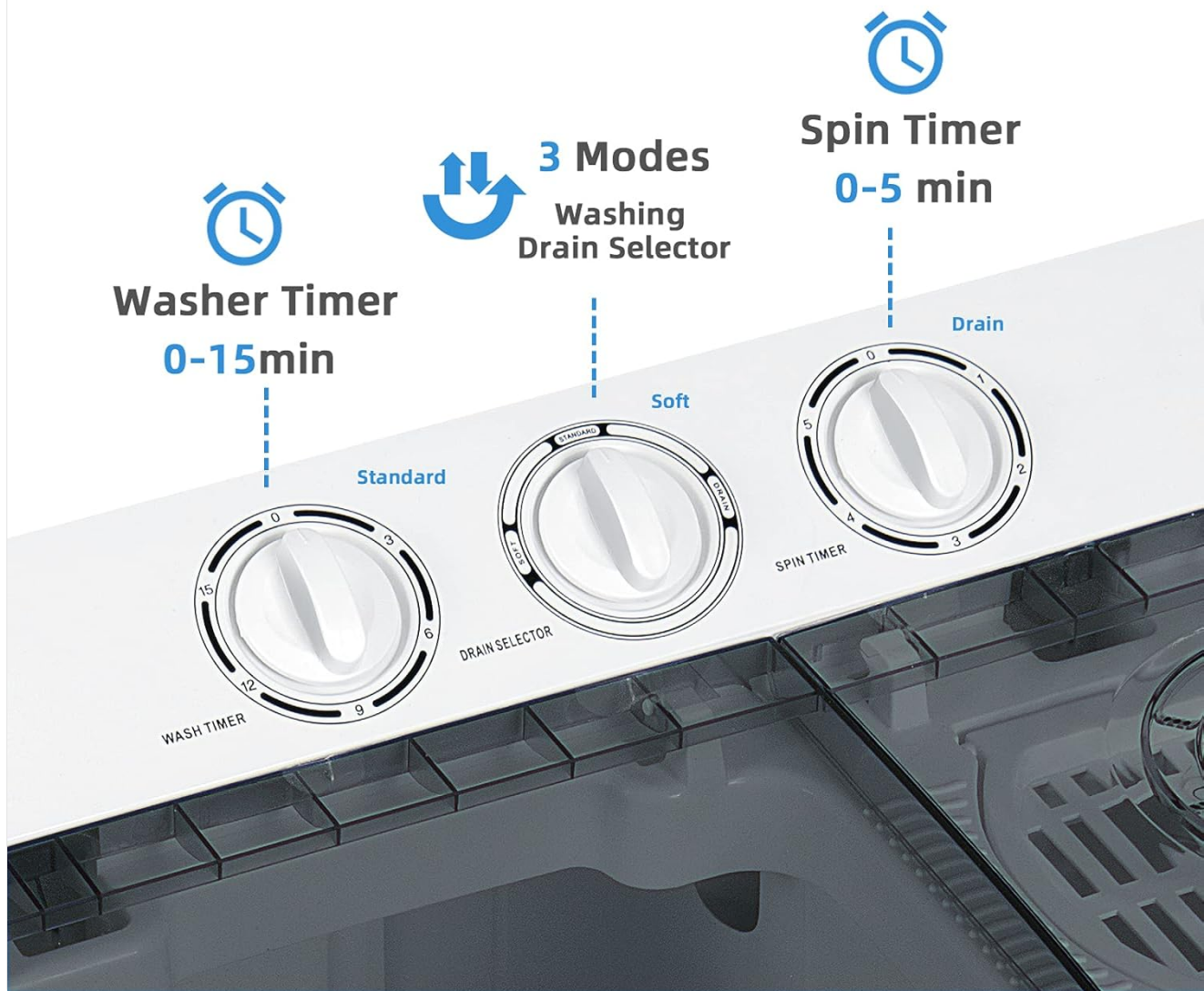


Figure 6: Multi-function control panel for operation.

Note: There are no official seller videos available for this product. Customer-uploaded videos are not included in this manual.

6. Maintenance

Regular maintenance ensures the longevity and optimal performance of your washing machine:

- **Cleaning the Filter:** Periodically check and clean the filter located in the wash tub to prevent lint and debris from accumulating and blocking the drain.
- **Exterior Cleaning:** Wipe the exterior of the machine with a soft, damp cloth. Avoid using abrasive cleaners or solvents.
- **Interior Cleaning:** After each use, wipe down the inside of the tubs to remove any residual water or detergent. Leave the lids open for a short period to allow for air circulation and prevent odors.
- **Storage:** If storing for an extended period, ensure the machine is completely drained and dry. Store in a cool, dry place.

7. Troubleshooting

If you encounter any issues, refer to the following common problems and solutions:

Problem	Possible Cause	Solution
Machine does not start	Power cord not plugged in; Power outage; Timer not set.	Ensure power cord is securely plugged in; Check power supply; Set the Wash or Spin Timer.
Water does not drain	Drain hose kinked or blocked; Drain selector not set to 'Drain'; Filter clogged.	Straighten drain hose and check for obstructions; Turn Drain Selector knob to 'Drain'; Clean the filter.
Excessive vibration or noise during spin	Clothes unevenly distributed in spin tub; Machine not on a level surface; Overloaded.	Redistribute clothes evenly; Ensure machine is on a stable, level surface; Reduce laundry load.
Water leakage	Hoses not securely connected; Drain hose improperly positioned.	Check and tighten all hose connections; Ensure drain hose is properly placed in a drain or sink.

8. Specifications

Key technical specifications for your COSTWAY Portable Washing Machine:

Specification	Value
Brand	COSTWAY
Model Number	FP10012US-GR
Overall Dimensions (L x W x H)	25" x 14.5" x 27.5"
Net Weight	28 lbs
Voltage	120V/60HZ
Rated Input Power (Washing)	280W
Rated Input Power (Spin-drying)	160W
Wash Tube Capacity	13.2 lbs
Spin Tube Capacity	8.8 lbs
Washing Timer	Up to 15 minutes
Spinning Timer	Up to 5 minutes
Length of Wire	55"
Length of Drainage Pipe	51"
Length of Inlet Pipe	42"
Material	Polypropylene (PP)
Control Console	Knob
Color	Grey

9. Warranty & Support

Specific warranty details for this product are not provided in the available information. For warranty claims, technical support, or service inquiries, please contact COSTWAY customer service directly or refer to the warranty card included with your purchase. You can often find contact information on the manufacturer's official website or through your retailer. For additional support, visit the official COSTWAY store: [COSTWAY Store on Amazon](#)