

RAINPOINT TCIK10PWNHV1-Z

RAINPOINT WiFi Automatic Watering System Instruction Manual

Model: TCIK10PWNHV1-Z

INTRODUCTION

This manual provides detailed instructions for setting up, operating, and maintaining your RAINPOINT WiFi Automatic Watering System. This innovative system is designed to provide automated and remote-controlled watering for your indoor potted plants, ensuring they receive optimal hydration even when you are busy or away on vacation.

WHAT'S IN THE BOX?

Please verify that all components are present in your package:

- Gift Package
- USB Cable x 1
- 10m (32.8Ft) Tubing x 1
- Tubing End Caps x 3
- Detachable Hook x 1
- Filter x 1
- Check Valve x 1
- T Barb Fitting x 10
- Straight Barb Fitting x 3
- Micro Drip Emitters x 10



Image: All components included in the RAINPOINT WiFi Automatic Watering System kit.

SETUP

System Overview



Image: Overview of the RAINPOINT system setup, including the device, water reservoir, and drip lines to plants.

Powering the Device

The system supports two power modes: battery (4x AAA, not included) or USB cable. It is recommended to keep the USB cable powered for continuous operation and to ensure the schedule runs during power outages.



A photograph showing a RainPoint device on a wooden table. The device is connected to a clear cylindrical container with a blue pump inside. A black micro USB cable is plugged into the device. Next to the device are four small potted succulents. A smartphone lies on the table, displaying a green app interface. A green banner at the bottom contains the text 'RECOMMENDED YOU KEEP USB POWERED'.



1.2 Meter micro USB Cable(Included)



Backup power 4AA Batterise(Excluded)
Keep the schedule running during a blackout

Two charging modes

**RECOMMENDED
YOU KEEP USB POWERED**

Image: The device can be powered via USB cable or 4 AAA batteries (not included).

Wi-Fi Connection

Important: Only connect with 2.4GHz WiFi. For dual-band routers, independently enable the 2.4GHz WiFi band and name it differently from the 5GHz WiFi band. Ensure the USB cable is powered on before pairing WiFi.



Image: The device requires a 2.4GHz Wi-Fi connection.

To connect your mobile device to the watering system:

1. Open the RainPoint APP and tap "Add Device".
2. Select "Wi-Fi Water Timer with Pump" from the device list.
3. Enter your 2.4 GHz Wi-Fi network name and password.
4. Connect the device with a data cable to establish pairing.
5. Turn on the power and hold down the Wi-Fi button for 3-5 seconds until the indicator flashes quickly, once per second.

6. Confirm the indicator is blinking rapidly in the app.
7. Ensure the device is powered on during the adding process.
8. Once successfully added, the device will appear in your app.



Image: Steps for connecting the device to the mobile application.

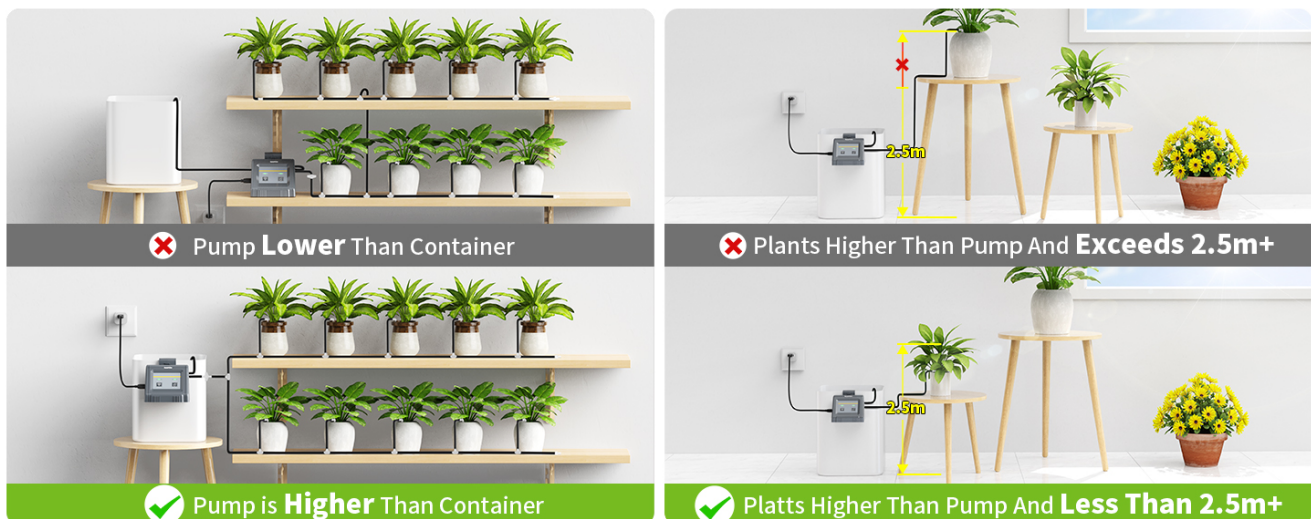


Image: Continuation of the Wi-Fi pairing process in the app.

Drip Irrigation Setup

Follow these steps to set up the drip irrigation system for your plants:

1. Measure the required tubing length for each plant.
2. Cut the tubing to the measured lengths.
3. Attach the tubing with T-Joints for branching.
4. Attach the tubing with the dripper at the plant's base.
5. Install a filter at the end of the water inlet pipe to prevent blockages.
6. Install the check valve at the outlet pipe near the pump to prevent backflow.
7. Hook the device to your water tank (e.g., a bucket).
8. Insert the dripper into the soil near the plant's roots.



Image: Guidelines for optimal pump and plant placement for effective watering.

OPERATING INSTRUCTIONS

Remote Control via App

The RainPoint APP allows you to remotely manage multiple watering plans. Notifications will be sent to the APP when "Automatic" watering plans are active or if the pump runs out of water. This feature is ideal for plant care when you are busy or on vacation.

18 October



Irrigation finished

23:20:06 | The irrigation of wifi Water Timer has been implemented. [View](#)



Irrigation finished

23:07:25 | The irrigation of wifi Water Timer has been implemented. [View](#)



Irrigation finished

22:52:28 | The irrigation of wifi Water Timer has been implemented. [View](#)



Irrigation finished

22:10:52 | The irrigation of wifi Water Timer has been implemented. [View](#)



Irrigation finished

21:36:58 | The irrigation of wifi Water Timer has been implemented. [View](#)



Irrigation finished

21:13:16 | The irrigation of wifi Water Timer has been implemented. [View](#)



Irrigation finished

21:00:48 | The irrigation of wifi Water Timer has been implemented. [View](#)

REAL-TIME NOTIFICATION

Image: Real-time notifications from the RainPoint app.



EVEN ON VACATION PLANTS ARE KEPT ALIVE AT HOME

Image: The system ensures plants are watered even when you are away.

Watering Modes

The system offers flexible watering modes:

- **Automatic Mode:** Customize irrigation plans based on local weather, temperature, humidity, sunrise/sunset, or specific days of the week.
- **Timed Mode:** Set watering duration from 20 seconds to 30 minutes, and watering frequency from 1 hour to 24 hours, or from 1 day to 7 days.
- **Manual Watering:** Initiate watering on demand.

- **Delayed Watering:** Postpone scheduled watering if needed.

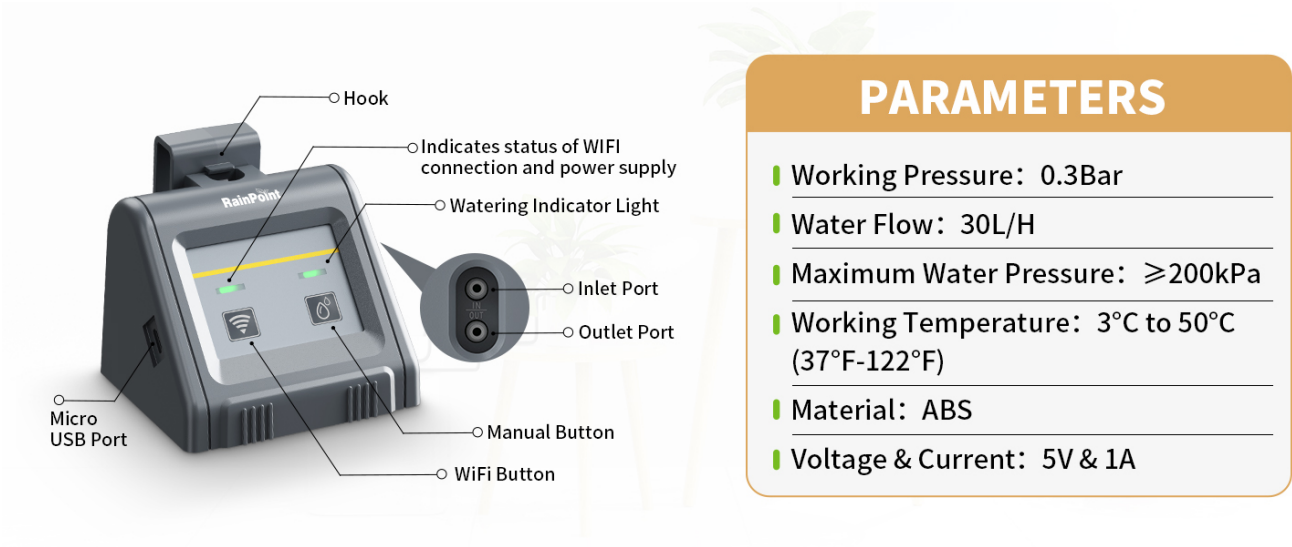


Image: Adjustable settings for watering frequency and duration.



Image: Smart weather-based watering and rain delay functions.

Family Co-Management

The RainPoint APP allows you to add multiple family members, enabling co-management of the watering system. This prevents accidental repeat watering and ensures consistent plant care.



WIDE APPLICATIONS WITH PRACTICALITY

Image: Family access to one device for shared control.

MAINTENANCE

Water Source

Ensure the water reservoir always has sufficient water. The system will send notifications if the pump runs out of water.

Filter Cleaning

Regularly check and clean the filter at the end of the water inlet pipe to prevent impurities from blocking the system.

Tubing and Emitters

Periodically inspect the tubing and micro drip emitters for any clogs or damage. Clean or replace as necessary to ensure consistent water flow.

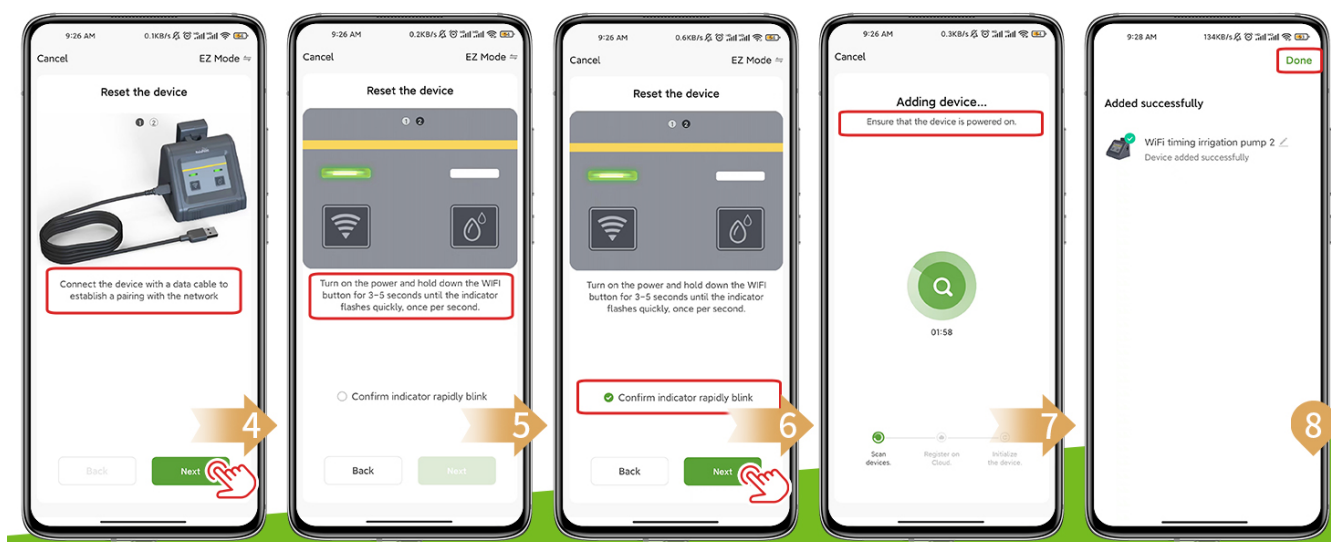


Image: Key components for system maintenance and longevity.

TROUBLESHOOTING

No Water Flow

- Check if the water reservoir is empty. Refill if necessary.

- Ensure the pump is powered on and connected.
- Inspect the filter for clogs and clean it.
- Check tubing for kinks or blockages.

Wi-Fi Connection Issues

- Verify your Wi-Fi network is 2.4GHz.
- Ensure the device is within range of your Wi-Fi router.
- Restart the device and attempt to reconnect via the app.
- Confirm the USB cable is powered on during pairing.

Inconsistent Watering

- Check for air bubbles in the tubing.
- Ensure all connections are secure and there are no leaks.
- Verify drippers are not clogged.
- Review your watering schedule settings in the app.

SPECIFICATIONS

Feature	Detail
Model Name	IK10PW
Material	Plastic
Power Source	Battery or USB Cable
Hose Length	32.8 Feet (10m)
Control Type	App Control
Number of Pieces (for 10 plants)	10 (Micro Drip Emitters)
Maximum Pressure	0.3 Bars
Water Flow	30L/H
Working Temperature	3°C to 50°C (37°F-122°F)
Voltage & Current	5V & 1A
Item Weight	1.37 pounds
Package Dimensions	8.58 x 5.87 x 3.9 inches
UPC	726754250156



Image: Device features and technical specifications.

WARRANTY & SUPPORT

For detailed warranty information and customer support, please refer to the official RAINPOINT website or contact their customer service.

You can also find additional resources and FAQs on the [RAINPOINT Store on Amazon](#).

An installation manual in PDF format is also available: [Installation Manual \(PDF\)](#).