

Altec Lansing IMW1500-BLK

Altec Lansing HydraShock Bluetooth Speaker User Manual

Model: IMW1500-BLK

Brand: Altec Lansing

1. INTRODUCTION

The Altec Lansing HydraShock Bluetooth Speaker is designed to deliver deep, powerful, and clear audio with room-filling bass, perfect for any occasion. This portable speaker is built with durability in mind, featuring an IP67 waterproof and dustproof rating, making it suitable for various environments including rain, snow, showers, pool parties, and outdoor adventures. It also includes convenient features like wireless phone charging and 11 LED light modes to enhance your audio experience.



Figure 1: Altec Lansing HydraShock Speaker with phone on top, highlighting wireless charging.

2. WHAT'S IN THE BOX

Upon unboxing your Altec Lansing HydraShock speaker, you should find the following components:

- HydraShock Bluetooth Speaker
- Carry Strap
- Wireless Charging Pad
- Stand
- USB-C Cable for Quick Charging

3. SETUP GUIDE

3.1 Initial Charging

Before first use, fully charge your HydraShock speaker using the provided USB-C cable. The speaker offers up to 20 hours of playtime on a full charge.



Figure 2: The HydraShock speaker boasts up to 20 hours of playtime.

3.2 Bluetooth Pairing

1. Power on the HydraShock speaker by pressing and holding the power button.
2. The speaker will automatically enter Bluetooth pairing mode, indicated by a flashing LED light.
3. On your smartphone, tablet, laptop, or other Bluetooth-enabled device, navigate to the Bluetooth settings.
4. Select "Altec Lansing HydraShock" from the list of available devices.
5. Once connected, the LED light will become solid, and you will hear an audible confirmation.

3.3 Wireless Phone Charging (Qi-enabled devices)

The HydraShock speaker features a built-in wireless charging pad for Qi-enabled phones. Simply place your compatible phone on top of the speaker to begin charging. This feature allows you to keep your devices powered while enjoying your music.



Figure 3: Wireless (Qi) charging feature on the HydraShock speaker.

4. OPERATING YOUR SPEAKER

4.1 Button Functions

The HydraShock speaker features intuitive controls on its side panel:



Figure 4: Button layout and functions on the HydraShock speaker.

- **Power On/Off:** Press and hold the power button to turn the speaker on or off.
- **Bluetooth Pairing:** Press the Bluetooth button to initiate pairing mode or connect to a previously paired device.
- **Volume Up (+):** Press to increase audio volume.
- **Volume Down (-):** Press to decrease audio volume.
- **Voice Control:** Activate your device's voice assistant (e.g., Siri, Google Assistant).
- **LED Light Control:** Cycle through 11 different LED light modes that beat and pulse to the music.
- **True Wireless Pairing:** Connect two HydraShock speakers for a stereo sound experience.

4.2 Light Modes

The HydraShock speaker features 11 distinct LED light modes that can be cycled through using the dedicated light control button. These lights are designed to synchronize with your music, creating an immersive visual experience for any party or gathering.

4.3 Waterproof and Durable Design

With an IP67 rating, the HydraShock speaker is waterproof, snowproof, and dirtproof. It is designed to float, making it ideal for use near water, such as pools, beaches, or during showers. Its robust construction ensures

durability in various outdoor conditions.



Figure 5: Key features of the HydraShock speaker, including its IP67 rating.

4.4 Portability

The speaker's compact size and built-in carry strap make it easy to transport. Whether you're hiking, camping, or just moving between rooms, the HydraShock is designed for convenience on the go.



Figure 6: The HydraShock speaker is designed for outdoor use and easy portability.

4.5 Official Product Videos

Altec Lansing HydraBlast Waterproof Bluetooth Speaker

Your browser does not support the video tag.

This video demonstrates the Altec Lansing HydraBlast speaker, highlighting its waterproof capabilities and robust design. It shows the speaker in various outdoor settings, emphasizing its durability and suitability for active lifestyles.

Altec Lansing HydraShock Waterproof Bluetooth Speaker

Your browser does not support the video tag.

This video provides a brief overview of the Altec Lansing HydraShock speaker, showcasing its design and features. It

emphasizes the speaker's waterproof nature and portability for various uses.

**Altec Lansing Waterproof Bluetooth Speaker
Hydra Series**

Your browser does not support the video tag.

This video highlights the waterproof capabilities of the Altec Lansing Hydra Series Bluetooth speakers, demonstrating their resilience in wet conditions and suitability for outdoor activities.

5. MAINTENANCE

To ensure the longevity and optimal performance of your HydraShock speaker, follow these maintenance guidelines:

- **Cleaning:** After use in wet or dirty environments, gently rinse the speaker with fresh water to remove any debris or residue. Use a soft cloth to wipe it dry.
- **Storage:** Store the speaker in a cool, dry place away from extreme temperatures and direct sunlight when not in use.
- **Charging Port:** Ensure the USB-C charging port cover is securely closed when the speaker is exposed to water or dust to maintain its IP67 rating.

6. TROUBLESHOOTING

If you encounter issues with your HydraShock speaker, try the following solutions:

Problem	Solution
Speaker won't turn on	Ensure the battery is charged. Connect the speaker to a power source using the USB-C cable.
Cannot pair via Bluetooth	Make sure the speaker is in pairing mode (flashing LED). Turn off and on your device's Bluetooth. Move the speaker closer to your device. Forget the device on your phone and re-pair.
No sound or low volume	Check the volume levels on both the speaker and your connected device. Ensure the speaker is properly paired.
Wireless charging not working	Ensure your phone is Qi-enabled and properly aligned on the charging pad. Remove any thick phone cases.

7. SPECIFICATIONS

Feature	Detail
Model Name	HydraShock
Speaker Type	Outdoor
Special Feature	Portable, Stereo pairing
Recommended Uses	Pool, Camping, Beach
Compatible Devices	Smartphone, Tablet, Laptop
Subwoofer Diameter	2.5 Inches
Unit Count	1 Count
Controller Type	Battery Powered
Surround Sound Channel Configuration	2.1
Color	Black
Battery Life	20 Hours
Item Weight	3.55 Kilograms (7.81 pounds)
Is Waterproof	True (IP67)
Charging Time	20 Hours (for full charge)
Control Method	Touch
Wireless Communication Technology	Bluetooth
Speaker Size	2.5 Inches
Power Source	Battery Powered
Bluetooth Range	100 Feet
Connectivity Protocol	Bluetooth, USB
Manufacturer	Altec Lansing Technologies
Speaker Maximum Output Power	20 Watts


8. WARRANTY AND SUPPORT

The Altec Lansing HydraShock speaker comes with a Limited Warranty. For specific details regarding

warranty coverage and to access customer support, please refer to the warranty information included with your product packaging or visit the official Altec Lansing website. You can also contact Altec Lansing Technologies directly for assistance.

Manufacturer: Altec Lansing Technologies

Related Documents - IMW1500-BLK

	<p>Altec Lansing HydraShock IMW1500 Wireless Speaker Quick Start Guide</p> <p>A quick start guide for the Altec Lansing HydraShock IMW1500 Everythingproof Wireless Speaker, covering setup, features, and troubleshooting.</p>
--	---



[Altec Lansing HydraShock IMW1500 Everythingproof Wireless Speaker Quick Start Guide](#)

Get started with your Altec Lansing HydraShock IMW1500 Everythingproof Wireless Speaker. This quick start guide provides essential information on setup, Bluetooth pairing, speaker controls, True Wireless Stereo (TWS) functionality, and customizable light modes.



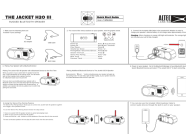
[Altec Lansing TOUGHBOXX Rugged Wireless Speaker IMT1030 Quick Start Guide and Manual](#)

Comprehensive guide for the Altec Lansing TOUGHBOXX Rugged Wireless Speaker (IMT1030), covering setup, features, Bluetooth pairing, TWS/Party Sync, FM radio, charging, safety, specifications, and warranty information.



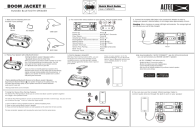
[Altec Lansing ATP3 Computer Speaker System User Guide and Setup](#)

Comprehensive user guide for the Altec Lansing ATP3 computer speaker system, covering specifications, setup instructions, safety precautions, and control usage.



[Altec Lansing Jacket H2O III Rugged Bluetooth Speaker Quick Start Guide and Warranty](#)

Quick start guide and warranty information for the Altec Lansing Jacket H2O III rugged Bluetooth speaker. Learn about setup, pairing, features like waterproofing and stereo pairing, and understand the one-year limited warranty terms.



[Altec Lansing Boom Jacket II Rugged Bluetooth Speaker Quick Start Guide](#)

Quick start guide for the Altec Lansing Boom Jacket II rugged Bluetooth speaker, covering setup, pairing, features, charging, warranty, and support information.