

[Manuals.plus](#) /

› [Tblicked](#) /

› Tblicked Girls Friends Pet House Building Set Instruction Manual

## Tblicked 4569

# Tblicked Girls Friends Pet House Building Set Instruction Manual

Model: 4569

## 1. INTRODUCTION

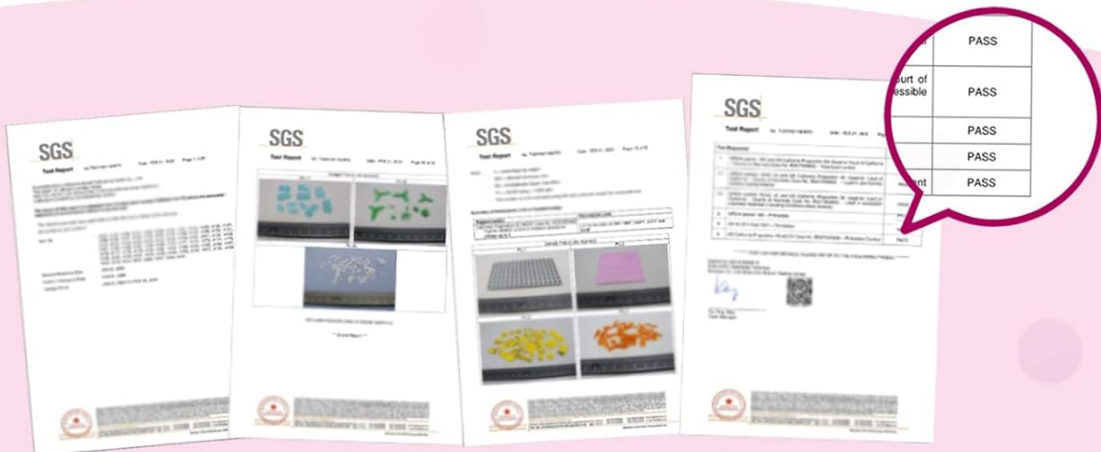
This manual provides detailed instructions for assembling and enjoying your Tblicked Girls Friends Pet House Building Set. This set allows for the creation of a vibrant pet day care center, complete with animal figures and interactive elements. Please read these instructions carefully before beginning assembly.

## 2. PACKAGE CONTENTS

Before starting, verify that all components are present in the package:

- 244 Pieces Plastic Bricks
- 1 Color Instruction Manual
- 1 Decorative Sticker Sheet
- 1 Brick Separator Tool
- 1 Mini Doll, 2 Cat Figures, and 2 Dog Figures

## SAFE FOR KIDS, EASY TO BUILD



ALL PASS ASTM F963-17 & CPSIA TEST by SGS

Image: Overview of the Tblicked Pet House Building Set's package contents, including the instruction manual and various components.

### 3. SAFETY INFORMATION

- **Recommended Age:** This building set is recommended for ages 6 years and up.
- **Small Parts Warning:** Contains small parts which may pose a choking hazard for children under 3 years. Adult supervision is advised.
- **Material Safety:** The product is made from ABS material and has passed ASTM F963-17 & CPSIA tests, ensuring a high level of safety. It is designed to be smooth, without burrs, and free from unpleasant odors.
- **Assembly:** Ensure all pieces are securely connected during assembly to prevent accidental detachment.

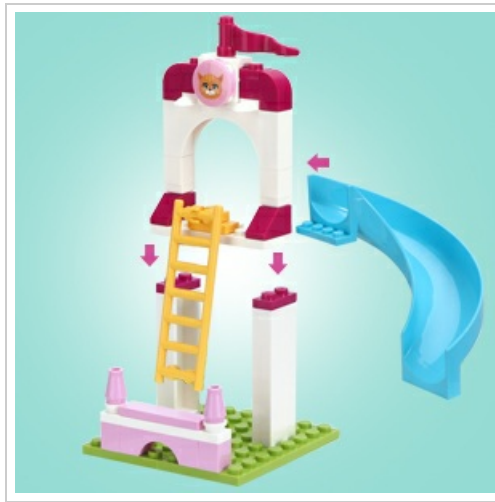


Image: Assorted building bricks, highlighting the product's material quality and safety standards.

## 4. ASSEMBLY INSTRUCTIONS

---

Follow the step-by-step instructions provided in the included color manual. The manual illustrates each stage of construction clearly.

1. **Preparation:** Unpack all components and sort the bricks by color or type to facilitate easier assembly. Refer to the parts list in the manual if available.
2. **Initial Structure:** Begin by building the base of the pet house and playground as shown in the manual's initial steps.
3. **Main Building:** Construct the walls, windows, and roof of the pet house. Pay attention to the placement of doors and interior elements like the reception desk and feeding station.
4. **Playground Elements:** Assemble the pet playground, including the slide, ladder, and rotating exercise wheel.
5. **Details and Figures:** Add decorative elements, stickers, and place the mini doll, cat, and dog figures in their designated areas.
6. **Using the Brick Separator:** If you need to disassemble any connected bricks, use the included brick separator tool to carefully pry them apart, preventing damage to the bricks or your fingers.



Image: The completed Tblicked Pet House Building Set, showcasing the pet day care center and playground.



Image: Close-up of the pet house and playground, illustrating the rotating exercise wheel and slide.

## 5. FEATURES AND PLAY GUIDE

The Tblicked Pet House Building Set offers various interactive features for imaginative play:

- **Pet Day Care Center:** Utilize the main building as a pet care facility. The set includes a reception area with a computer and cash register, and a feeding station.
- **Pet Playground:** The outdoor area features a slide with stairs for pet figures to enjoy.
- **Rotating Exercise Wheel:** A functional rotating wheel allows pet figures to engage in play.
- **Animal Figures:** The set includes two dog figures and two cat figures, along with a mini doll, to populate the pet house and playground.
- **Trophy:** A trophy accessory is included, suggesting a "puppy championship" scenario for role-playing.



Image: Interior detail of the pet house, featuring a reception desk with a computer and cash register.



Image: Detail of a rotating feeding station within the pet house.



Image: The pet playground area, showing the slide and the rotating exercise wheel with pet figures.

## 6. CARE AND MAINTENANCE

- **Cleaning:** To clean the building blocks, wipe them with a soft, damp cloth. Avoid using harsh chemicals or abrasive cleaners.
- **Drying:** Ensure all parts are completely dry before storing to prevent moisture damage.
- **Storage:** Store the building set in a cool, dry place away from direct sunlight to prevent discoloration or warping of

the plastic. Keep all small parts together to avoid loss.

- **Disassembly:** When disassembling, use the brick separator tool to carefully detach pieces. Avoid forcing bricks apart, as this can cause damage.

## 7. TROUBLESHOOTING

---

**Problem: Bricks do not connect securely or fall apart easily.**

**Solution:** Ensure that the bricks are aligned correctly and pressed firmly together. Some pieces may require more pressure to snap into place. Verify that you are using the correct pieces as indicated in the instruction manual.

**Problem: Difficulty separating connected bricks.**

**Solution:** Use the included brick separator tool. Place the thin edge of the separator between the two bricks you wish to detach and gently pry them apart. Avoid using excessive force or sharp objects.

**Problem: Missing pieces.**

**Solution:** Carefully check all packaging materials and the assembly area. If a piece is genuinely missing, contact customer support for assistance (see Section 9).

## 8. SPECIFICATIONS

---

Feature	Detail
Model Number	4569
Number of Pieces	244
Material	ABS Plastic
Recommended Age	6 years and up
Package Dimensions	10.79 x 10.04 x 2.44 inches
Item Weight	14.9 ounces
Manufacturer	GUANGDONG LOONGON ANIMATION & CULTURE CO.,LTD



Image: Dimensional overview of the Tblicked Pet House Building Set and its individual structures.

## 9. WARRANTY AND SUPPORT

For any questions regarding assembly, missing parts, or product functionality, please refer to the contact information provided on the product packaging or the official Tblicked website. Keep your purchase receipt as proof of purchase.

