

Manuals+

[Q & A](#) | [Deep Search](#) | [Upload](#)

manuals.plus /

- › [Escort](#) /
- › [Escort M2 Smart Dash Cam User Manual](#)

Escort 0010068-1

Escort M2 Smart Dash Cam User Manual

Model: 0010068-1 | Brand: Escort

1. PRODUCT OVERVIEW

The Escort M2 Smart Dash Cam is designed to provide comprehensive video recording and driver assistance features. It captures Full HD 1080P video, integrates with compatible Escort radar detectors, and offers advanced functionalities like built-in GPS, dual-band Wi-Fi, cloud video management, and emergency alerts.



Figure 1.1: Escort M2 Smart Dash Cam and its accompanying Drive Smarter app interface.

Your browser does not support the video tag.

Video 1.1: An introductory overview of the Escort M2 Dash Camera, highlighting its key features and benefits.

2. WHAT'S IN THE BOX

Upon unboxing your Escort M2 Smart Dash Cam, verify that all components are present:

- Escort M2 Dash Camera Unit
- Mounting Arm (for attachment to compatible radar detectors or windshield)
- USB Cable (for power and data transfer)
- 16GB Micro SD Card (pre-installed or included separately)



Figure 2.1: Included components of the Escort M2 Smart Dash Cam.

3. SETUP AND INSTALLATION

3.1 Mounting the Dash Cam

The M2 Dash Cam is designed for easy integration with compatible Escort radar detectors using the provided mounting arm. It can also be mounted independently. Ensure the camera has a clear view of the road ahead.



Figure 3.1: Proper mounting position of the Escort M2 Dash Cam on a vehicle's windshield.

3.2 Power Connection

Connect the dash cam to your vehicle's power source. If integrating with a compatible Escort radar detector, the dash cam can often draw power directly from the detector's power supply, simplifying wiring.

Your browser does not support the video tag.

Video 3.1: A detailed product overview video demonstrating the physical setup and connectivity of the Escort M2 Dash Cam.

3.3 Micro SD Card Insertion

Ensure the 16GB Micro SD card is properly inserted into the designated slot on the dash cam. This card stores all recorded video footage.

4. OPERATING INSTRUCTIONS

4.1 Automatic Recording

The Escort M2 automatically begins recording in Full HD 1080P resolution when powered on. Recordings are saved in continuous loops, overwriting the oldest footage unless protected.

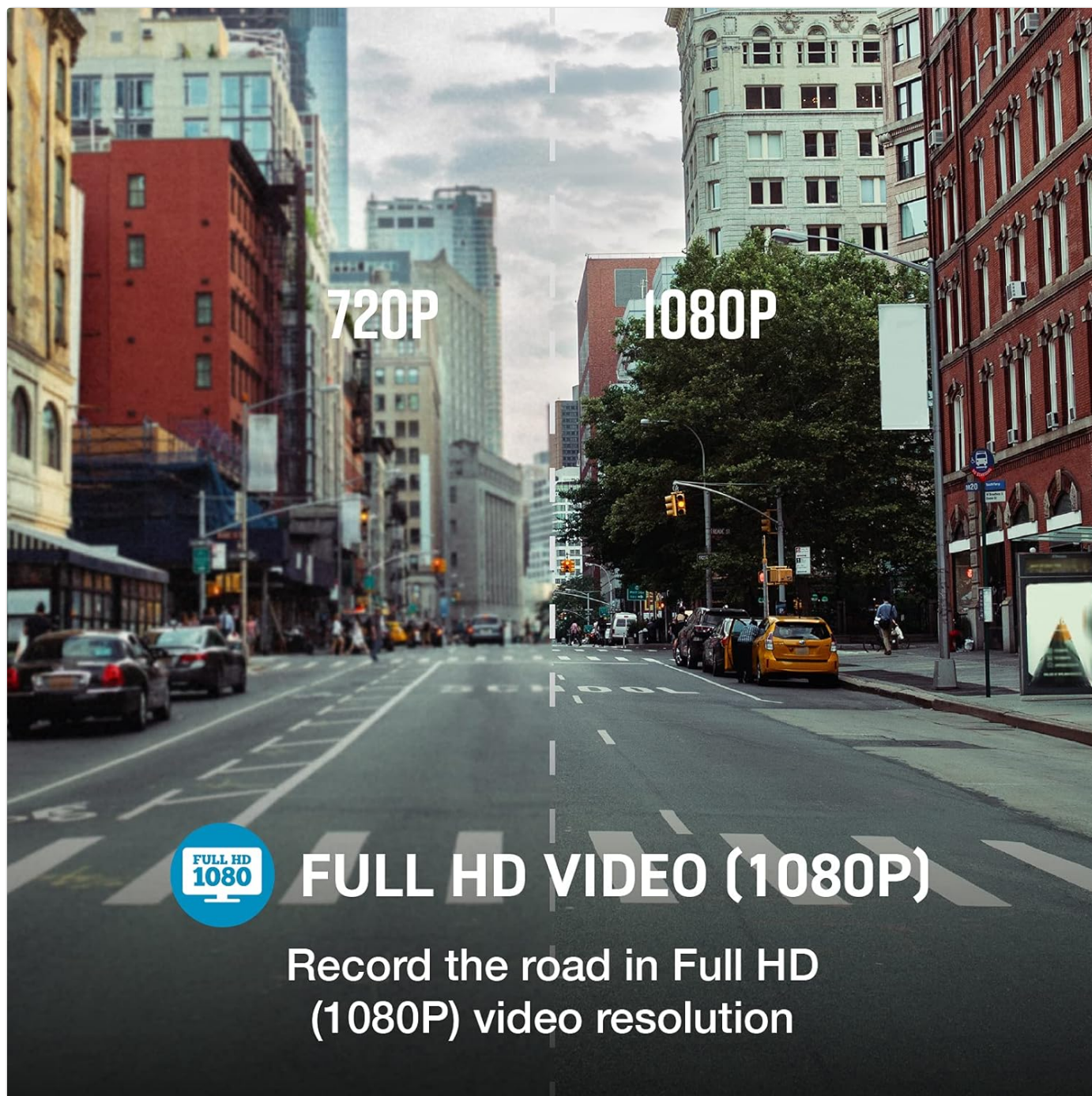


Figure 4.1: Visual representation of the Full HD 1080P video quality captured by the dash cam.

4.2 Built-in GPS

The integrated GPS module records your vehicle's speed and location data, embedding this information directly into the video files. This provides crucial context for any recorded incidents.



Figure 4.2: The dash cam features built-in dual-band Wi-Fi and GPS for comprehensive data recording.

5. DRIVE SMARTER APP & CONNECTIVITY

The Drive Smarter app is central to managing your Escort M2 Dash Cam. It allows you to:

- Manage dash cam settings and features.
- View, edit, and share video footage instantly via built-in dual-band Wi-Fi.
- Receive automatic software updates and alerts.
- Access exclusive shared alerts from the Drive Smarter community.
- Integrate with Apple CarPlay & Android Auto for in-vehicle display of alerts and routes.

Your browser does not support the video tag.

Video 5.1: Demonstration of the Drive Smarter app's integration with Apple CarPlay, providing real-time alerts and navigation.

6. PARKING MODE & SAFETY FEATURES

6.1 Parking Mode

With a hardwire connection (sold separately), the M2 Dash Cam can activate Parking Mode. This feature allows the camera to save valuable footage in the event of a bump or collision while your vehicle is parked, providing surveillance even when the engine is off.



Figure 6.1: The Parking Mode feature provides surveillance when the vehicle is stationary.

6.2 Emergency Mayday Alert

In the event of a serious accident, the Emergency Mayday Alert feature automatically sends a text message to your designated emergency contact. This critical safety function ensures help can be dispatched quickly.

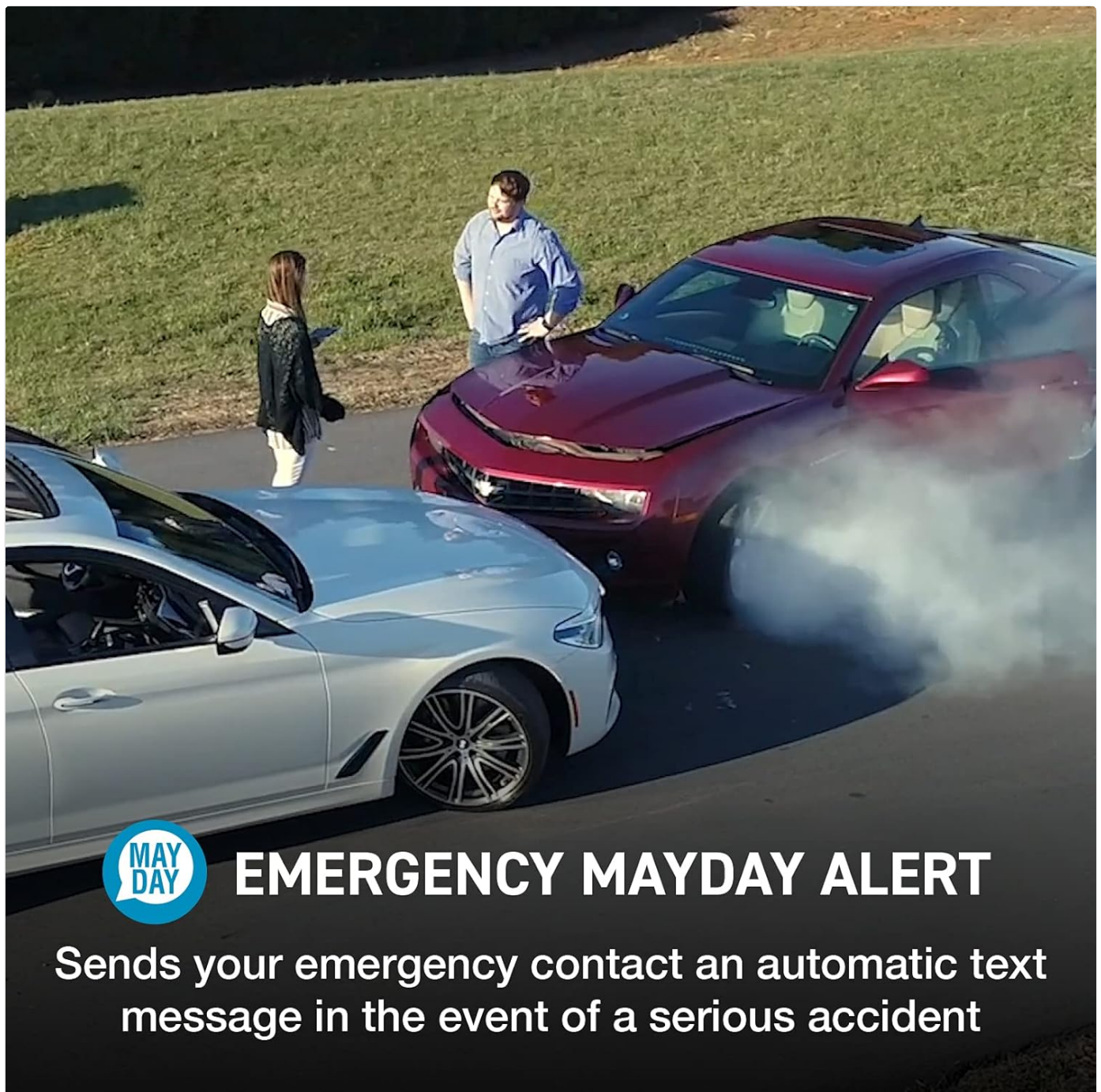


Figure 6.2: The Emergency Mayday Alert system automatically notifies contacts in case of an accident.

6.3 Incident Reports

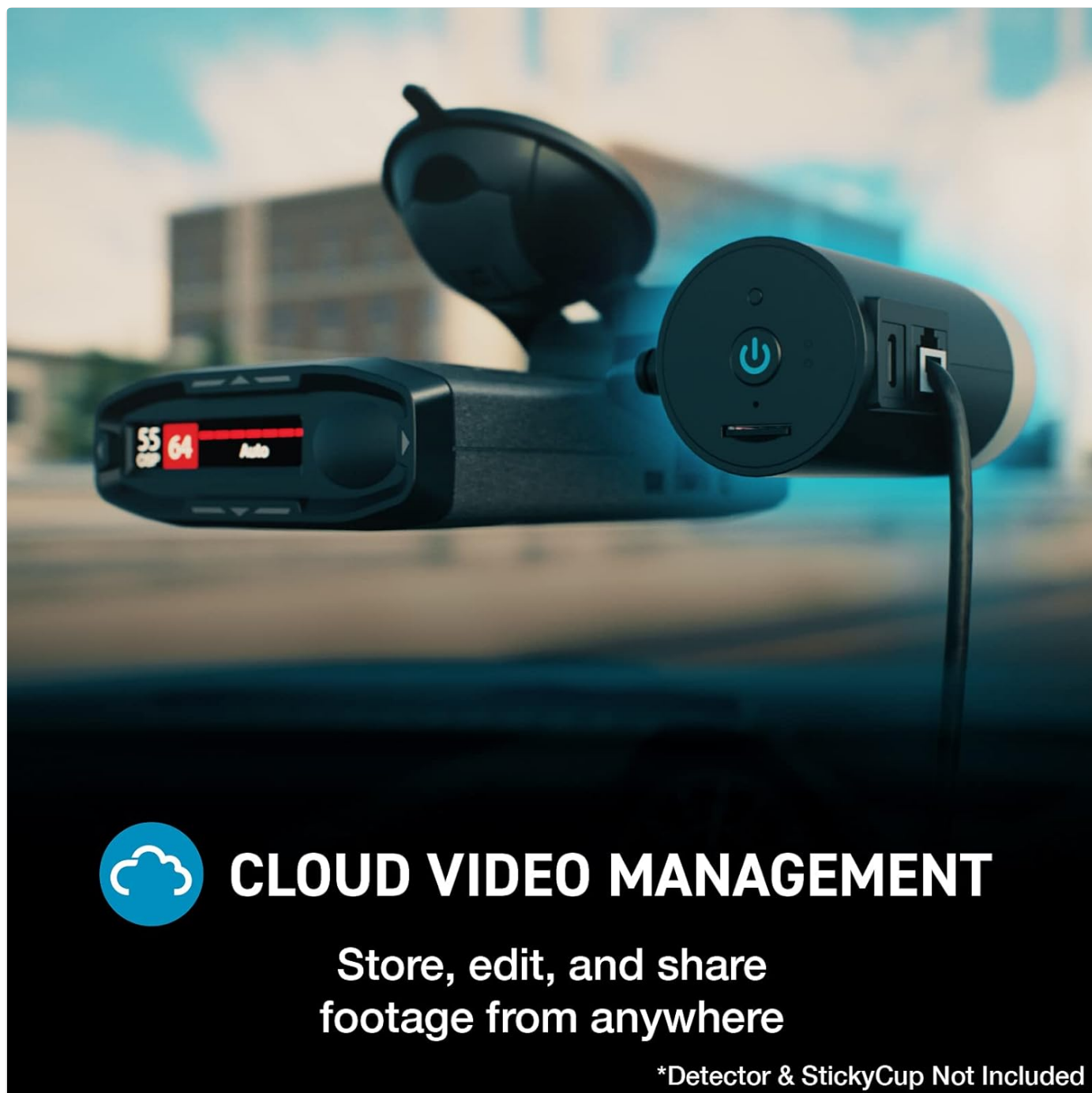
The M2 automatically saves and locks recordings during a crash, G-sensor events, or when the emergency recording button is pressed. This prevents critical footage from being overwritten.

7. VIDEO MANAGEMENT

Footage from the M2 Dash Cam can be managed directly through the Drive Smarter app or by connecting the device to a computer.

7.1 Cloud Video Management

Utilize the built-in Wi-Fi to instantly store, edit, and share your video footage to the cloud. This allows for convenient access and sharing from any location.



CLOUD VIDEO MANAGEMENT

Store, edit, and share
footage from anywhere

*Detector & StickyCup Not Included

Figure 7.1: Cloud video management allows for remote access and sharing of recorded footage.

7.2 Local Video Access

To access videos directly from the Micro SD card, remove the card from the dash cam and insert it into a compatible card reader on your computer. Alternatively, connect the dash cam directly to your computer using the USB cable. Videos are typically organized into folders such as "Event," "Favorites," and "Normal" for easy navigation.

8. SPECIFICATIONS

Feature	Detail
Video Capture Resolution	1080p Full HD
Connectivity Technology	Bluetooth, Wi-Fi (Dual-band)

Special Features	Built-In GPS, Parking Mode (hardwire required), Emergency Mayday Alert, Cloud Video Management
Product Dimensions	3.39 x 1.38 x 1.38 inches
Item Weight	8.6 ounces
Mounting Type	Magnetic Mount (compatible with Escort detectors)
Included Components	Dash Camera, Mounting Arm, USB Cable, 16GB Micro SD Card

9. TROUBLESHOOTING

9.1 Camera Not Recording

- Ensure the dash cam is properly powered. Check the power connection and vehicle's power outlet.
- Verify the Micro SD card is correctly inserted and not full. Format the card if necessary (this will erase all data).
- Check if the Micro SD card is corrupted or faulty. Try using a different, compatible Micro SD card.

9.2 Wi-Fi Connectivity Issues

- Ensure your smartphone's Wi-Fi is enabled and connected to the dash cam's Wi-Fi network.
- Restart both the dash cam and your smartphone.
- Update the Drive Smarter app to the latest version.

9.3 GPS Signal Loss

- Ensure the dash cam has a clear view of the sky, free from obstructions like tinted windows or large metal objects.
- Move the vehicle to an open area to acquire a stronger GPS signal.

10. WARRANTY AND SUPPORT

For detailed warranty information and technical support, please refer to the official Escort website or contact their customer service. Keep your purchase receipt as proof of purchase for warranty claims.

Online resources, including FAQs and software updates, are available on the Escort support page. You can also find additional support through the Drive Smarter app.