

AIRTOK AP1001

AIRTOK AP1001 Replacement Filter Instruction Manual

Model: AP1001-HEPA Filter

INTRODUCTION

This manual provides essential information for the proper use and maintenance of your AIRTOK AP1001 Replacement Filter. This filter is specifically designed for the AIRTOK AP1001 Air Purifier to ensure optimal performance and air quality. The AIRTOK AP1001-HEPA filter features a 5-layer purification system, engineered to capture a wide range of airborne particles and odors, contributing to a cleaner and healthier indoor environment.

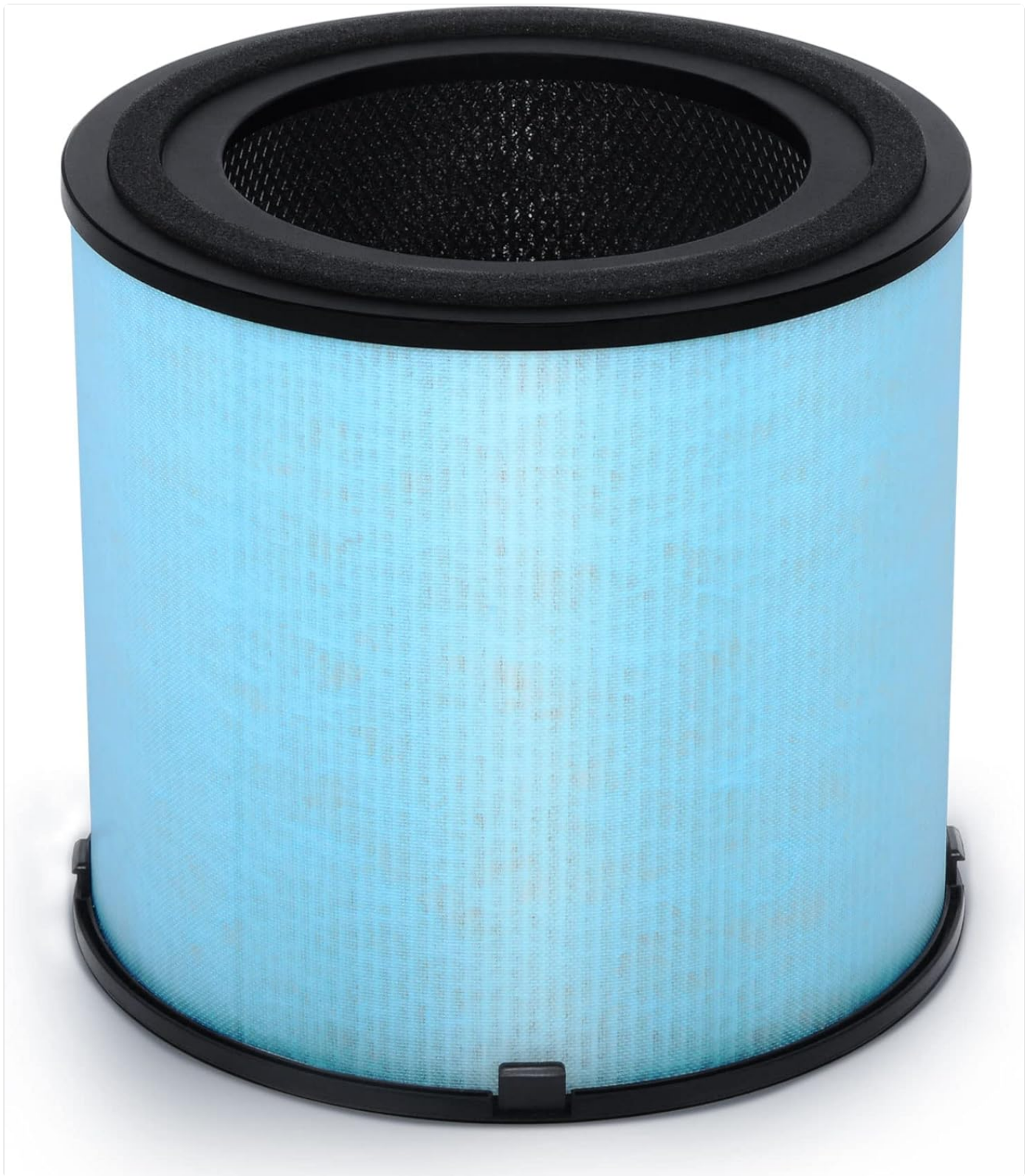


Image: The AIRTOK AP1001 Replacement Filter, a cylindrical filter with a light blue outer layer and black top and bottom rings.

PRODUCT FEATURES AND FILTRATION SYSTEM

The AP1001-HEPA filter incorporates a comprehensive 5-layer filtration system:

1. **Ultra-fine Pre-Filter layer:** Captures large particles such as dust, lint, and pet hair.
2. **Blue Nano Nylon layer:** Designed to capture wildfire smoke, soot from automobiles, and other suspended small particles.
3. **H13 True HEPA layer:** Removes airborne allergens including dust pollen, mold, mildew, fungal spores, pet dander, dust mites, and their excrement, with 99.97% efficiency for particles down to 0.3 microns.

4. **Activated Carbon layer:** Adsorbs and decomposes formaldehyde, benzene, ammonia, volatile organic compounds, nicotine, and other pungent odors.
5. **Sturdy Steel Mesh layer:** Provides structural integrity and protects the inner filter layers from crushing.

How to replace filter

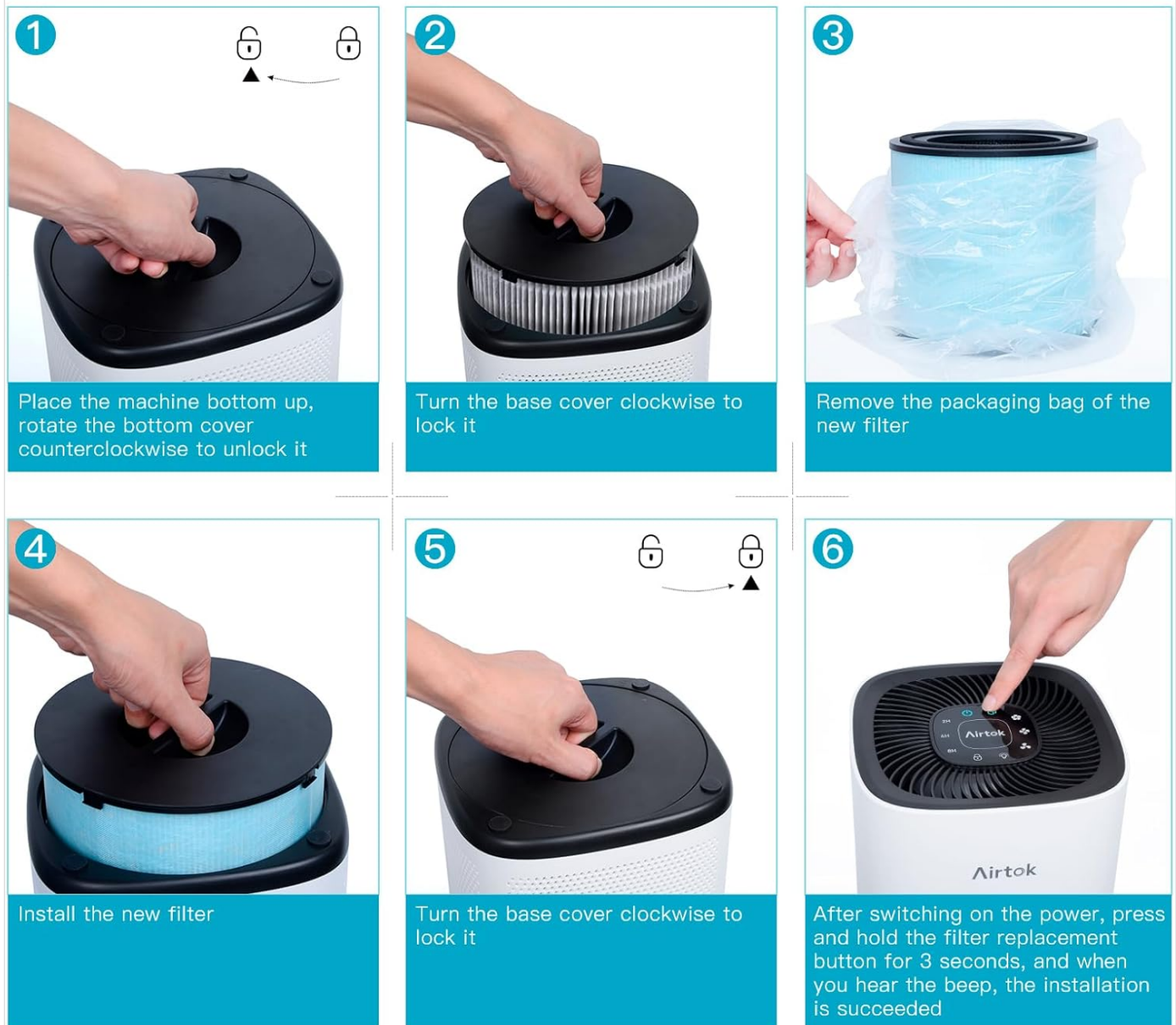


Image: A detailed diagram illustrating the five distinct layers of the AIRTOK AP1001 filter and their respective functions in purifying air.

INSTALLATION AND REPLACEMENT

It is recommended to replace the filter regularly to maintain optimal air purification performance and prevent secondary pollution. Filters are sealed to protect their lifetime; please remove all plastic packaging from the new filter before installation.

Replacing the Filter Element:

1. **Step 1:** Place the air purifier machine bottom up. Rotate the bottom cover counter-clockwise to unlock it.
2. **Step 2:** Turn the base cover clockwise to lock it, then remove the old filter.
3. **Step 3:** Remove the packaging bag from the new filter.
4. **Step 4:** Install the new filter into the air purifier.

5. **Step 5:** Turn the base cover clockwise to lock it securely.
6. **Step 6:** After switching on the power, press and hold the filter replacement button for 3 seconds until you hear a beep. This action resets the filter indicator, confirming successful installation.

Airtok



Constructed to the highest standards for longer lasting and higher performing filters

- ✓ Around the border is arranged with sponge, to ensure airtight leakage.
- ✓ The top with the traction belt, easy to take and replace.
- ✓ Standard size perfectly fits AIRTOK AP1001 air purifier.

TIP: For AIRTOK AP1001 Air Purifier Only



Image: A six-step visual guide demonstrating how to replace the filter in the AIRTOK AP1001 air purifier, from unlocking the base to resetting the filter indicator.

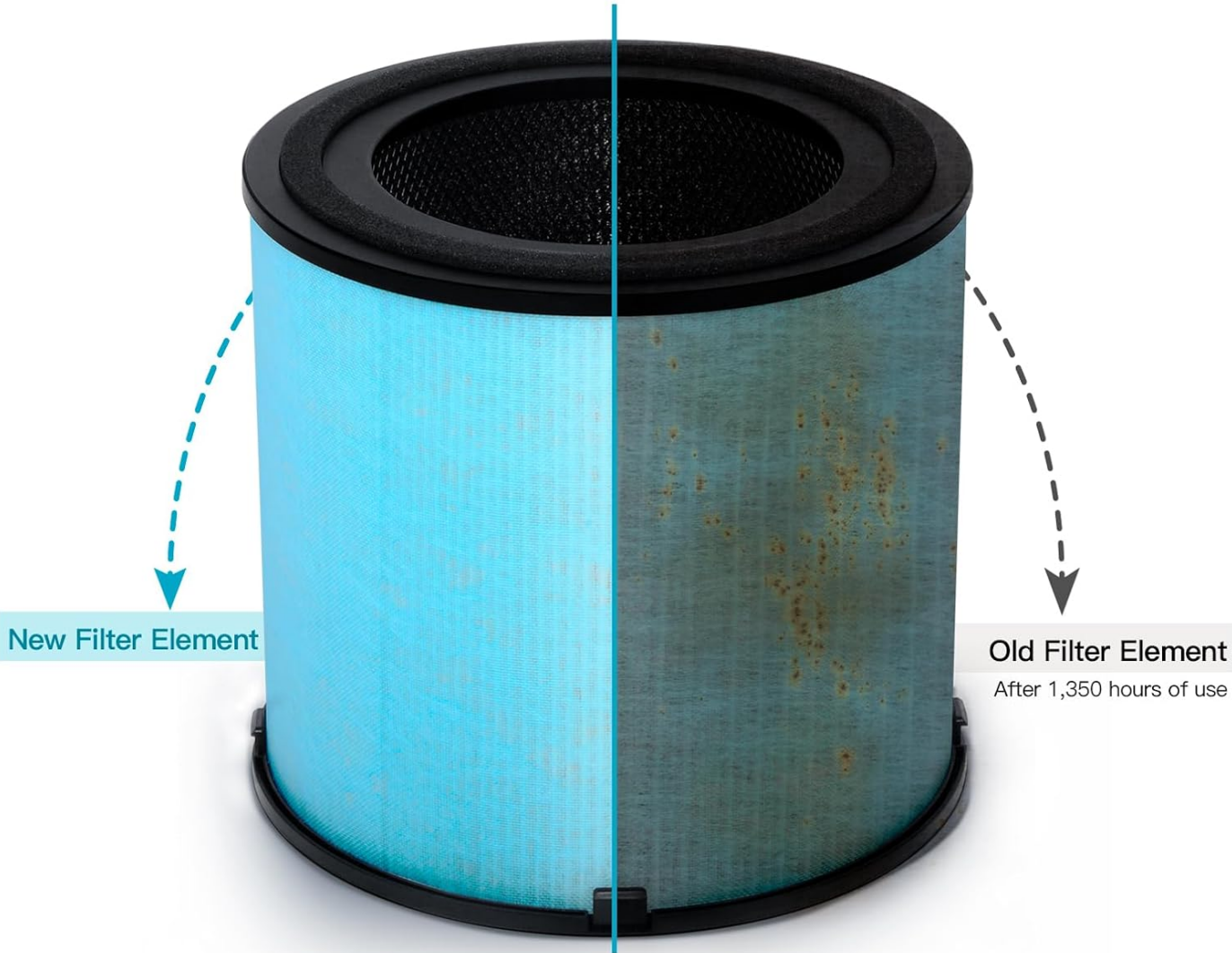
MAINTENANCE

Regular filter replacement is crucial for maintaining the efficiency and longevity of your AIRTOK AP1001 Air Purifier.

- **Filter Lifespan:** The replacement filter indicator will illuminate after approximately 1,350 hours of continuous operation to remind you to replace the used filter.
- **Authentic Filters:** Always use authentic AIRTOK replacement filters (AP1001-RF) to ensure compatibility and optimal performance. Off-brand filters may be inconsistent, unreliable, and could potentially damage the air purifier.

Change the Filter Element

Replace the filter element regularly to prevent secondary pollution



TIP: After about 1,350 hours of continuous operation, the replacement filter indicator will light up to remind you to replace the used filter.

Image: A side-by-side comparison showing a new, clean AIRTOK filter next to an old, discolored filter after 1,350 hours of use, highlighting the need for replacement.

SPECIFICATIONS

AIRTOK AP1001 Replacement Filter Specifications

Feature	Detail
Model Number	AP1001-HEPA Filter
Compatible Device	AIRTOK AP1001 Air Purifier
Filtration System	5-Layer (Pre-Filter, Blue Nano Nylon, H13 True HEPA, Activated Carbon, Steel Mesh)
Product Dimensions	7.09 inches (L) x 6.62 inches (W) x 3.94 inches (Th)
Item Weight	15.8 ounces (0.45 Kilograms)

Feature	Detail
Material	Nylon (outer layer)
Recommended Replacement	Approximately every 1,350 hours of use



Image: The AIRTOK AP1001 filter shown with its key dimensions (7.09 inches and 6.62 inches) and logos for California Air Resources Board and US EPA, indicating compliance.

TROUBLESHOOTING

If you encounter issues after replacing your filter, consider the following:

- **Filter Indicator Not Resetting:** Ensure you have pressed and held the filter replacement button for at least 3 seconds until you hear a beep. If the issue persists, power cycle the air purifier (unplug, wait 30 seconds, plug back in) and try resetting again.
- **Reduced Airflow or Odor:** Verify that all plastic packaging has been removed from the new filter. Ensure the filter is

correctly seated and the bottom cover is securely locked. If the problem continues shortly after replacement, the environment may have unusually high levels of pollutants, requiring more frequent filter checks.

- **Unusual Noise:** Check that the filter is properly installed and not loose. Ensure no foreign objects have fallen into the air purifier.




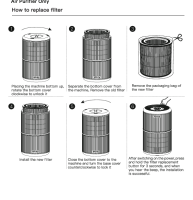
WARRANTY AND SUPPORT


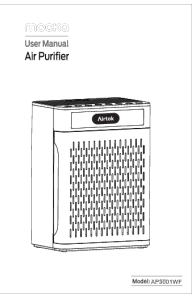
AIRTOK is committed to providing high-quality products. For any questions, concerns, or support regarding your AIRTOK AP1001 Replacement Filter or air purifier, please contact AIRTOK customer service. Refer to your original air purifier manual or the AIRTOK official website for specific warranty details and contact information.

Note: Using non-authentic replacement filters may void your air purifier's warranty.

© 2023 AIRTOK. All rights reserved.
For more information, visit [the AIRTOK Store on Amazon](#).

Related Documents - AP1001

	<p>Airtok AP1001 Air Purifier Owner's Manual</p> <p>Owner's manual for the Airtok AP1001 air purifier, including safety instructions, packing list, product introduction, operating guide, troubleshooting, and specifications.</p>
	<p>Airtok AP1002 Air Purifier: Owner's Manual & Operating Guide</p> <p>Comprehensive owner's manual for the Airtok AP1002 air purifier. Learn about setup, operation, filter replacement, troubleshooting, and specifications for this H13 True HEPA air cleaner designed for home use.</p>
	<p>Airtok AP1001 Air Purifier Owner's Manual</p> <p>Comprehensive owner's manual for the Airtok AP1001 air purifier, covering safety instructions, packing list, product introduction, operating guide, quick start scenarios, filter replacement, power adapter location, product specifications, warranty, and troubleshooting.</p>
	<p>How to Replace Filter for AIRTOK AP0601 Air Purifier</p> <p>Step-by-step instructions on how to replace the filter for your AIRTOK AP0601 Air Purifier. Learn how to safely remove the old filter and install a new one.</p>

 The image shows the cover of the Airtok AP0601 Air Purifier Owner's Manual. It features the Airtok logo at the top left, a barcode in the center, and the text "[AP0601] AIR PURIFIER" in a blue box. Below this, it says "Instruction Suitable for UK/Germany/France/Italy/Spain".	<p>Airtok AP0601 Air Purifier Owner's Manual</p> <p>Comprehensive owner's manual for the Airtok AP0601 Air Purifier, detailing setup, operation, safety, maintenance, and troubleshooting for UK, Germany, France, Italy, and Spain.</p>
 The image shows the cover of the Airtok AP3001WF Air Purifier User Manual. It features the Airtok logo at the top left, the text "User Manual Air Purifier" below it, and a photograph of the air purifier unit. At the bottom right, it says "Model AP3001WF".	<p>Airtok AP3001WF Air Purifier User Manual</p> <p>User manual for the Airtok AP3001WF Air Purifier, covering safety information, specifications, product overview, operation guide, getting started, aromatherapy, care and maintenance, and troubleshooting.</p>