

[manuals.plus](#) /

› [GATEMAN](#) /

› [Gateman WF-200 Fingerprint Keyless Digital Door Lock User Manual](#)

GATEMAN WF-200

Gateman WF-200 Fingerprint Keyless Digital Door Lock User Manual

Model: WF-200 | Brand: GATEMAN

INTRODUCTION

This manual provides detailed instructions for the installation, operation, maintenance, and troubleshooting of the Gateman WF-200 Fingerprint Keyless Digital Door Lock. Please read this manual thoroughly before using the product to ensure proper function and safety.



Front view of the Gateman WF-200 Fingerprint Keyless Digital Door Lock, showcasing the keypad and handle.

PRODUCT FEATURES

- **One-Touch Easy Scan Fingerprint Recognition:** Memorizes up to 20 fingerprints for quick and secure access.
- **PIN Code Entry:** Supports secure PIN code access with a decoy PIN feature to prevent exposure.
- **Safe Handle:** Designed to prevent forced entry.
- **Silent Mode:** Mute loud beeps by touching the pad for 3 seconds for late-night use.
- **Security Lockout:** Temporarily disables operation for 3 minutes after 5 incorrect PIN entries.
- **Manual Indoor Lock:** Prevents external access via PIN or fingerprint when engaged.
- **Safety Features:** Includes protection against electric shock and fire.
- **Break-in Alarm:** Activates a high-decibel alarm upon detection of forced entry attempts.
- **Adjustable Volume:** Voice guidance volume can be adjusted.
- **Child Safety Button:** Requires depression before the inside handle can operate, enhancing safety.



Leading edge technology molded with
Elegant Design, in Gloss Black Finish.



The Gateman WF-200 features a leading-edge design with a gloss black finish.

SETUP AND INSTALLATION

1. Unpacking and Components

Carefully unpack all components and verify against the packing list. Ensure all parts are present before beginning installation.

2. Door Preparation

Ensure your door meets the required specifications for thickness and bore holes. Refer to the installation template provided in the product packaging for precise measurements.

3. Installing the Exterior and Interior Units

Follow the step-by-step instructions in the separate installation guide for mounting the exterior keypad unit and the interior battery unit. Secure all screws firmly but do not overtighten.



Interior view of the Gateman WF-200 Digital Door Lock, showing the battery compartment and manual lock switch.

4. Battery Installation

Insert the specified number of AA alkaline batteries into the battery compartment of the interior unit. Ensure correct polarity. Close the battery cover securely.

5. Initial Setup and Calibration

After battery installation, the lock will perform an initial calibration. Follow any voice prompts or indicator lights to complete this process.

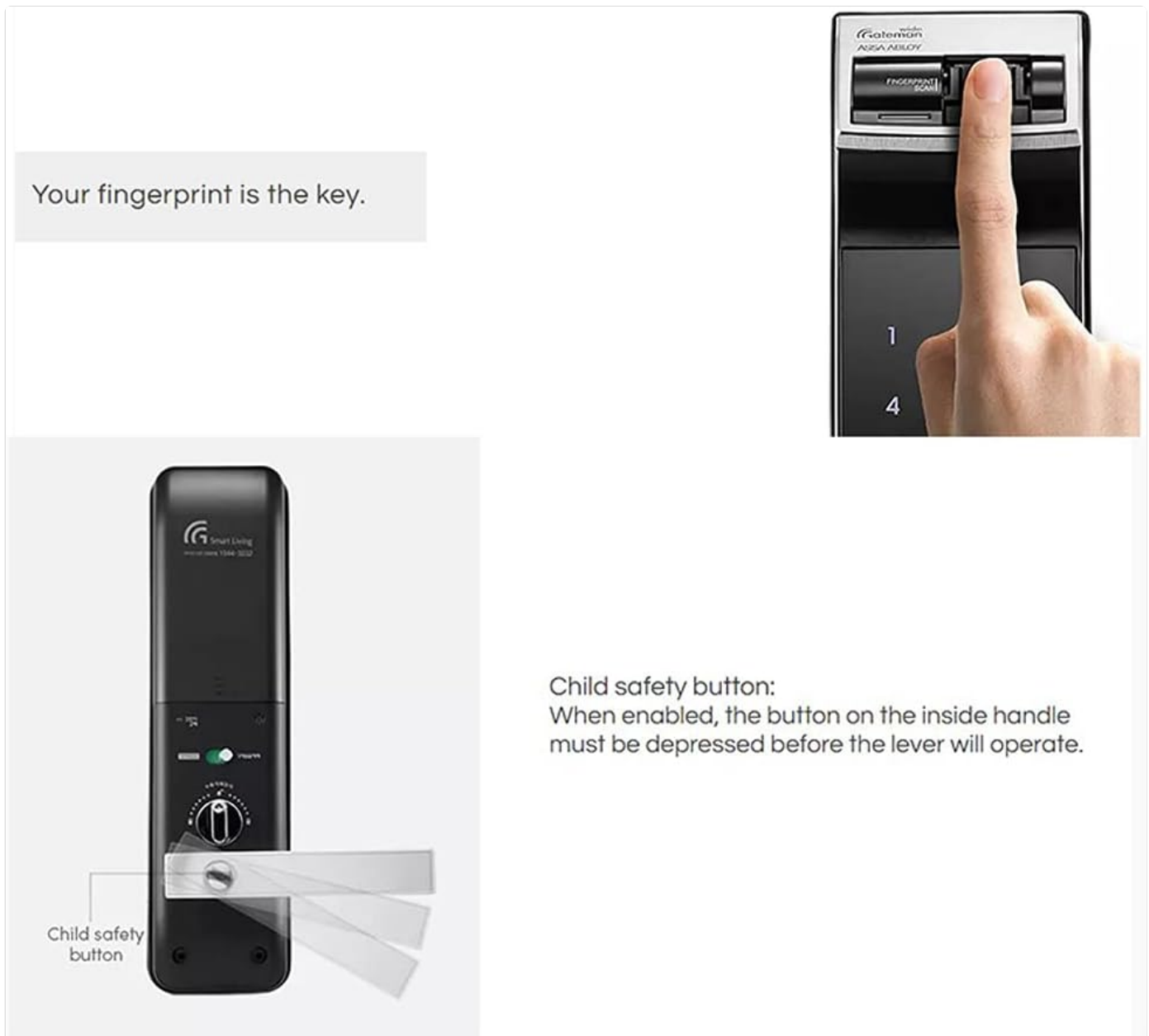
OPERATING INSTRUCTIONS

1. Registering Fingerprints

The Gateman WF-200 can store up to 20 fingerprints. To register a fingerprint:

1. Access the registration mode (refer to the specific sequence in your quick start guide, usually involving a master PIN).

2. Place your finger on the Easy Scan sensor.
3. Follow the voice prompts to lift and place your finger multiple times until registration is complete.



Your fingerprint is the key. The image shows a finger being placed on the fingerprint scanner for access.

2. Setting a PIN Code

To set or change your PIN code:

1. Enter the master registration mode.
2. Input your desired PIN code (4-12 digits recommended).
3. Confirm the PIN code as prompted.

3. Using the Decoy PIN Feature

To prevent your PIN from being exposed, you can enter random numbers before or after your actual PIN. For example, if your PIN is 1234, you can enter 987612345432. The lock will recognize the correct sequence within the longer string.

Decoy PIN feature:

You can add meaningless numbers before or after the PIN when there is a chance of exposing your PIN to others.



The decoy PIN feature allows adding meaningless numbers before or after your PIN to enhance security.

4. Opening the Door

- **By Fingerprint:** Place a registered finger on the sensor. The lock will unlock upon successful recognition.
- **By PIN Code:** Touch the keypad to activate, enter your PIN code (with or without decoy numbers), and press the '*' or '#' button (refer to specific model instructions).
- **By Mechanical Key:** In case of emergency or battery depletion, use the provided mechanical key.

Fingerprint or PIN Code Entry.



Security Lockout:

If an invalid PIN code is entered 5 times, the lock will stop operating for 5 minutes.

The lock supports both fingerprint and PIN code entry for convenient access.

5. Locking the Door

- **Automatic Locking:** The lock will automatically engage after a few seconds once the door is closed.
- **Manual Locking:** Press the lock button on the exterior unit or use the manual lock switch on the interior unit.

6. Child Safety Button

The child safety button, located on the interior unit, prevents accidental opening from the inside. When enabled, the button must be depressed before the handle can be operated.

Your fingerprint is the key.



Child safety button:
When enabled, the button on the inside handle
must be depressed before the lever will operate.

The child safety button on the interior unit requires activation to operate the handle, preventing unintended exits.

7. Double Lock Feature

To activate the double lock feature for enhanced security and privacy, engage the specific switch on the interior unit. When double lock is active, all external access methods (fingerprint, PIN) are disabled.

Double lock:
In double lock mode, all access from outside are blocked for extra security and privacy.



Break-in alarm goes off if anyone attempts to damage the lock or force the door open.

The double lock feature blocks all external access for increased security and privacy.

MAINTENANCE

1. Battery Replacement

When the low battery indicator appears or voice prompts indicate low power, replace all batteries with new AA alkaline batteries. Do not mix old and new batteries or different battery types.

2. Cleaning

Clean the lock's exterior with a soft, dry cloth. Avoid abrasive cleaners, solvents, or excessive moisture, which can damage the finish or electronic components. Regularly wipe the fingerprint sensor to ensure optimal performance.

3. Clearing Fingerprints from Pad

To clear residual fingerprints from the keypad surface, simply touch the entire pad with your palm for a few seconds. This helps maintain privacy.

TROUBLESHOOTING

Problem	Possible Cause	Solution
---------	----------------	----------

Problem	Possible Cause	Solution
Lock does not respond.	Dead batteries.	Replace all batteries with new AA alkaline batteries.
Fingerprint not recognized.	Finger not placed correctly; dirty sensor; unregistered fingerprint.	Ensure full finger contact; clean sensor; re-register fingerprint if necessary.
PIN code not working.	Incorrect PIN; security lockout active.	Verify PIN; wait 3 minutes if lockout is active.
Alarm sounds unexpectedly.	Attempted forced entry; tampering.	Check door for signs of tampering. If false alarm, consult support.
Door cannot be opened from outside.	Manual indoor lock engaged; double lock active.	Disengage manual indoor lock or double lock from the interior unit.

SPECIFICATIONS

Brand: GATEMAN

Model: WF-200

Lock Type: Biometric, Keyless Digital Door Lock

Dimensions (L x W x H): 4.72 x 16.34 x 16.34 inches

Power Source: AA Alkaline Batteries (quantity not specified, typically 4 or 8)

Fingerprint Capacity: Up to 20 fingerprints

PIN Code Length: User-defined (typically 4-12 digits)

Control Method: Touch, Voice (for guidance)

UPC: 191997047014

Manufacturer: Gateman


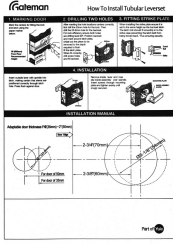
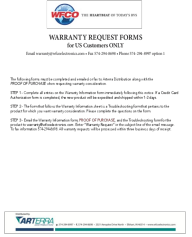
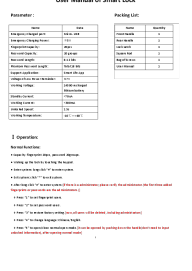
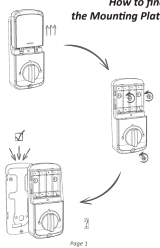
First Available: September 16, 2021

WARRANTY AND SUPPORT

For warranty information, please refer to the warranty card included with your product or visit the official GATEMAN website. Keep your proof of purchase for warranty claims.

For technical support, troubleshooting assistance, or to inquire about replacement parts, please contact GATEMAN customer service. Contact details can typically be found on the manufacturer's website or in the product packaging.

Online Resources: For additional support and frequently asked questions, please visit the [GATEMAN official website](#).

	<p>Gateman RINO Series Smart Door Lock Owner's Manual and Features</p> <p>Comprehensive owner's manual for the Gateman RINO Series smart door lock by Gateman (ASSA ABLOY). Covers installation, usage, features like PIN/card access, alarms, emergency power, and troubleshooting.</p>
	<p>Gateman Tubular Loverset Installation Guide</p> <p>Comprehensive installation guide for Gateman tubular leversets, detailing door preparation, drilling specifications, strike plate fitting, and assembly steps. Includes diagrams and measurements for various door thicknesses and hole placements.</p>
	<p>WFCO Electronics Warranty Request and Troubleshooting Guide</p> <p>This document outlines the warranty request process and troubleshooting procedures for WFCO Electronics products, including power centers, inverters, and transfer switches. It details the forms required, steps for submitting a claim, and specific testing procedures for various product series.</p>
	<p>WAFU WF-016 Smart Lock User Manual: Installation, Operation, and App Guide</p> <p>Comprehensive user manual for the WAFU WF-016 Smart Lock. Covers installation, operation, fingerprint and password setup, app connectivity with Smart Life, family management, temporary access, and troubleshooting.</p>
	<p>ZOMOSS DRZ Smart Door Lock Installation and Programming Guide</p> <p>Comprehensive guide for installing, programming, and troubleshooting the ZOMOSS DRZ smart door lock. Includes step-by-step instructions, code management, and safety information.</p>