

GODOX CT-16

Godox CT-16 Wireless Radio Flash Trigger Receiver Kit

Instruction Manual

1. PRODUCT OVERVIEW

The Godox CT-16 Wireless Radio Flash Trigger Receiver Kit is designed to wirelessly trigger studio flashes and camera flashes. It operates on a 433MHz frequency, offering reliable synchronization for various photographic setups. The kit includes one transmitter and two receivers, along with necessary sync cables and adapters.



Image 1.1: The Godox CT-16 Wireless Radio Flash Trigger Receiver Kit, showing the transmitter, two receivers, sync cables, and adapters.

2. PACKAGE CONTENTS

- 1x CT-16 Transmitter
- 2x CT-16 Receiver
- 2x Sync Cable (2.5mm to 3.5mm)
- 2x Convert Adapter (3.5mm to 6.35mm)
- 1x Soft Cloth

3. SETUP INSTRUCTIONS

3.1. Battery Installation

The CT-16 transmitter is equipped with a pre-installed 12V 23A battery. For the receiver, you will need to install two AAA 1.5V alkaline batteries (not included).

1. Slide open the battery-chamber cover located on the back of the receiver.
2. Insert two AAA 1.5V alkaline batteries, ensuring correct polarity.
3. Close the battery-chamber cover.

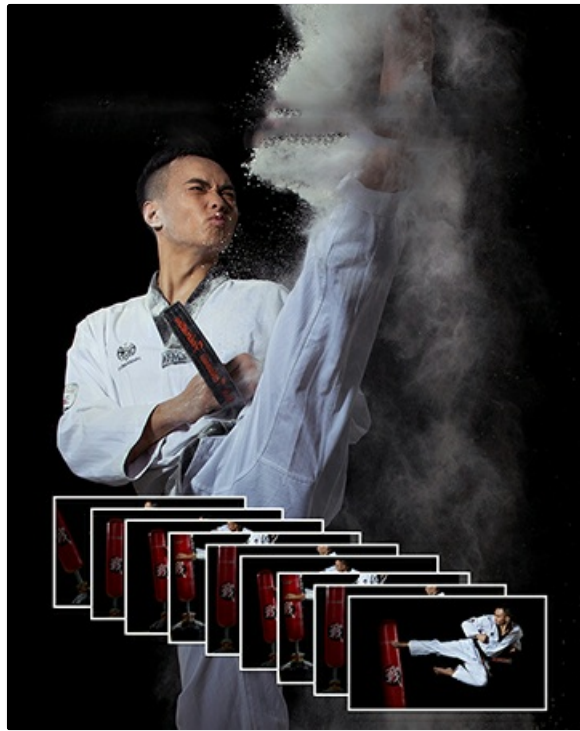


Image 3.1: The receiver with its battery compartment open, showing where to insert two AAA batteries.

3.2. Channel Setting

Both the transmitter and receiver feature DIP switches for channel selection. To ensure proper communication, both units must be set to the same channel.

1. Locate the DIP switches on both the transmitter and receiver.
2. Adjust the switches on both units to match, selecting one of the 16 available channels. For example, if switch 1 is ON on the transmitter, it must also be ON on the receiver.

Multi Channel Design

Use Method: 1. The transmitter and receiver need to be set up the same channel
2. Please take out the transparent film before use

**Before use, please
take it out**

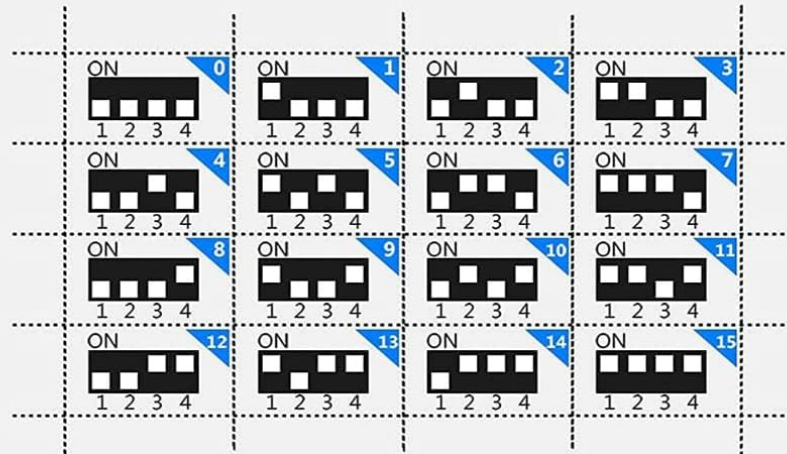


Image 3.2: Diagram illustrating the DIP switches on both the transmitter and receiver for setting the communication channel.

3.3. Initial Preparation

Before first use, remove the transparent protective film from the hot shoe contact of the transmitter.

3.4. Connecting the Receiver to a Flash Unit

The receiver can be connected to a speedlight or a studio strobe.

- **For Speedlights:** Slide the receiver onto the hot shoe of your speedlight.
- **For Studio Strobes:** Connect the receiver to the studio flash using the provided 2.5mm sync cable. If your studio flash requires a 6.35mm jack, use the included convert adapter.

SUPPORT STUDIO FLASH

Equipped with 6.35mm convert adapter and 3.5mm, allowing you to change as you like



Image 3.3: The CT-16 receiver connected to a studio strobe via a sync cable and 6.35mm adapter.



Image 3.4: Close-up of the 3.5mm sync cable and the 6.35mm convert adapter.

3.5. Mounting the Transmitter on Your Camera

Slide the transmitter onto your camera's hot shoe. Ensure it is securely seated.



Image 3.5: The CT-16 transmitter mounted on a camera's hot shoe.

3.6. Receiver Mounting Options

The receiver is equipped with a 1/4-inch screw thread, allowing it to be mounted on a light stand or tripod. It also features an umbrella hole for attaching photographic umbrellas or softboxes.

UMBRELLA INPUT DESIGN

Can install camera umbrella, umbrella soft box, safe and stable



Image 3.6: The receiver mounted on a light stand, demonstrating its compatibility with photographic umbrellas.

4. OPERATING INSTRUCTIONS

4.1. Powering On

Switch on the receiver using the ON/OFF switch. The transmitter does not have an ON/OFF switch; it activates when mounted on the camera hot shoe and the camera is powered on.

4.2. Testing the Signal

After setting up the channels and powering on the receiver, press the test button on the transmitter. The indicator lights on both the transmitter and receiver should illuminate red, confirming a successful signal transmission.

4.3. Flash Synchronization

Once the transmitter is mounted on your camera and the receiver(s) are connected to your flash unit(s) with matching channels, the system is ready for use. When you press your camera's shutter button, the transmitter will send a signal to the receiver(s), triggering the connected flash(es) in M (manual) mode. The maximum synchronous speed is up to 1/250 second, which may vary depending on your specific SLR

camera model.

SUPPORT MULTIPLE LIGHTS SYNCHRONIZATION

M mode synchronization, support within 1/250s (according to different SLR)



Image 4.1: Illustration of a single transmitter wirelessly triggering multiple speedlights simultaneously.

4.4. Product Components Diagram



Image 4.2: Detailed diagram labeling the various parts of the CT-16 receiver and transmitter, including indicator lights, channel switches, sync jacks, and hot shoe mounts.

5. COMPATIBILITY

The Godox CT-16 is designed for wide compatibility with standard hot shoe cameras from brands such as Canon, Nikon, Pentax, Sony (with Mi hot shoe), Fuji, and Olympus. However, some specific camera models may not be compatible. Please verify your camera's hot shoe type.

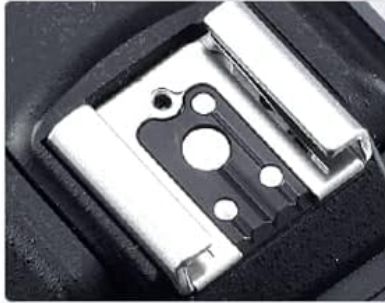
Note: Not compatible with Canon EOS Rebel SL3/2500D, Rebel T7/1500D/2000D/Rebel T100/3000D/4000D. Not compatible with Nikon SB800.

STRONG COMPATIBILITY

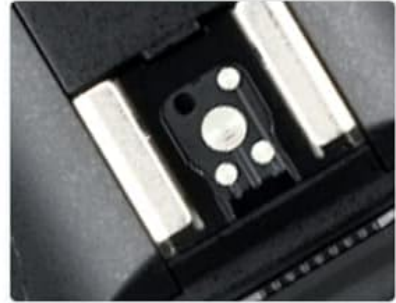
Compatible with the following SLR hot shoes



Canon



Nikon



Pentax



Sony



Fuji



Olympus

Image 5.1: Examples of compatible camera hot shoe designs from Canon, Nikon, Pentax, Sony, Fuji, and Olympus.

6. MAINTENANCE

6.1. Battery Replacement

- **Receiver:** Replace the two AAA 1.5V alkaline batteries when the unit no longer powers on or the indicator light does not respond consistently.
- **Transmitter:** The 12V 23A battery in the transmitter is designed for long-term use. If replacement is necessary, it typically requires disassembling the unit. It is recommended to contact customer support for guidance on transmitter battery replacement.

6.2. General Care

- Keep the units dry and clean. Use the provided soft cloth to wipe away dust or smudges.
- Avoid exposing the units to extreme temperatures or humidity.
- Store the units in a protective case when not in use to prevent damage.

7. TROUBLESHOOTING

If you encounter issues with your Godox CT-16 kit, refer to the following common problems and solutions:

- **Transmitter not sending a signal:**

Ensure the transparent protective film has been removed from the transmitter's hot shoe contact. Verify that the transmitter and receiver are set to the exact same channel. Press the test button on the transmitter; the indicator light should turn red.

- **Receiver not receiving signal or no response:**

Check if the receiver's power switch is in the 'ON' position. Confirm that two AAA 1.5V batteries are correctly installed in the receiver. Ensure the receiver and transmitter are set to the same channel.

- **Flash not triggering:**

Verify that the flash unit is powered on and functioning correctly. Confirm that the receiver and transmitter are on the same channel. Ensure the sync cord (if used) or the hot shoe mount is completely and securely connected.

- **Compatibility issues:**

While widely compatible, some specific camera models may not work. Refer to the compatibility notes in Section 5.

8. SPECIFICATIONS

Feature	Specification
Model Number	CT-16
Channels	16 Groups
Sync Cable Jack	Supports 6.35mm / 3.5mm ports
Outdoor Working Distance	Up to 30 meters (open area)
Indoor Working Distance	Up to 20 meters (open area)
Transmitter Frequency	433MHz Wireless Transmission
Synchronized Time	Up to 1/250s (varies by SLR)
Transmitter Power	12V 23A battery
Receiver Power	1.5V (AAA*2 battery)
Item Weight	8.4 ounces
Package Dimensions	8.7 x 5.71 x 1.57 inches
Manufacturer	GODOX

9. OFFICIAL PRODUCT VIDEO






Your browser does not support the video tag.

Video 9.1: An instructional video demonstrating the setup and basic operation of the Godox CT-16 Flash Trigger Kit, including battery installation, channel setting, and connecting to flash units.

10. WARRANTY AND SUPPORT

For warranty information, technical support, or any inquiries not covered in this manual, please contact GODOX customer service directly. Refer to the product packaging or the official GODOX website for the most current contact details.

Related Documents - CT-16

	<p>Godox TT520II/TT560II Camera Flash User Manual</p> <p>User manual for the Godox TT520II and TT560II camera flashes, covering nomenclature, installation, usage, advanced applications, and specifications.</p>
	<p>Godox TT600 Thinklite Camera Flash Instruction Manual</p> <p>This manual provides detailed instructions for the Godox TT600 Thinklite Camera Flash, covering its features, operation, safety warnings, and maintenance. Learn how to attach, use, and customize settings for various photography scenarios.</p>
	<p>Godox X2T-N Wireless Flash Trigger for Nikon Cameras</p> <p>Comprehensive user guide for the Godox X2T-N wireless flash trigger, detailing its features, setup, compatibility with Nikon cameras, and advanced lighting control capabilities.</p>
	<p>Godox XProN TTL Drahtloser Blitzauslöser - Bedienungsanleitung</p> <p>Umfassende Bedienungsanleitung für den Godox XProN TTL Drahtlosen Blitzauslöser. Erfahren Sie, wie Sie Ihr Blitzgerät für Nikon-Kameras einrichten, bedienen und optimieren, einschließlich Funktionen wie Hochgeschwindigkeits-Synchronisation und i-TTL-Steuerung.</p>
	<p>Godox X3 Pro TTL Wireless Flash Trigger Instruction Manual</p> <p>Explore the Godox X3 Pro TTL Wireless Flash Trigger, a professional tool for photographers. This manual details its advanced features, including TTL and manual flash modes, a 2.4-inch touchscreen, extensive camera compatibility, and stable wireless performance for creative lighting control.</p>
	<p>Godox TT600 Thinklite Camera Flash User Manual</p> <p>Comprehensive user manual for the Godox TT600 Thinklite Camera Flash, covering features, operation, safety warnings, technical specifications, and maintenance. Learn how to use manual mode, stroboscopic flash, S1/S2 slave modes, Hi-Speed Sync, and custom functions for professional photography.</p>

