

[Manuals.plus](#) /

> [LG](#) /

> LG gram 17Z95P Laptop User Manual - 17-inch Ultra-Lightweight, Intel Evo i7, 16GB RAM, 1TB SSD

## LG 17Z95P-K.AAB8U1

# LG gram 17Z95P Laptop User Manual

Model: 17Z95P-K.AAB8U1

## INTRODUCTION

This manual provides essential information for setting up, operating, maintaining, and troubleshooting your LG gram 17Z95P laptop. Please read this manual thoroughly before using your device to ensure proper and safe operation.

## WHAT'S IN THE BOX

Verify that all items are present in the product packaging:

- LG gram 17Z95P Laptop
- Power Cord
- Manual and Warranty Card

## SETUP

### 1. Initial Power-on and Charging

Before first use, connect the laptop to a power outlet using the provided power cord and adapter. The battery may not be fully charged upon delivery.



Figure 1: LG gram 17Z95P Laptop. Ensure the power cord is securely connected to the laptop and a wall outlet.

## 2. Connecting Peripherals

Your LG gram laptop offers various ports for connecting external devices:

- **USB-C with Thunderbolt 4:** Two ports for high-speed data transfer, video output, and power delivery.
- **USB-A 3.2:** Two ports for standard USB devices like mice, keyboards, or external drives.
- **HDMI:** One full-size port for connecting to external displays.
- **MicroSD Card Reader:** For accessing data from microSD cards.
- **3.5mm Audio Jack:** For headphones or external speakers.



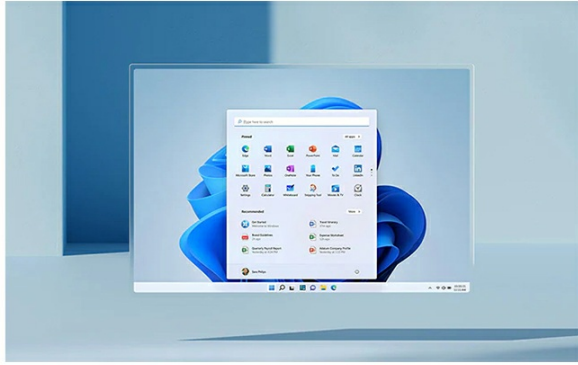
Figure 2: Left side ports including HDMI, USB-C (Thunderbolt 4 compatible), and audio jack.



Figure 3: Right side ports including MicroSD card slot and USB-A ports.

## 3. Operating System and Initial Configuration

Your laptop comes with Windows 11 Home pre-installed. Follow the on-screen instructions to complete the initial setup, including language selection, network connection, and user account creation.



## Introducing Windows 11

Windows 11 brings you closer to what you love. Pursue your passions and maximize your productivity with the new Windows 11. Built with tools to help you multitask, think, create, and connect—all designed with simplicity and intuition in mind.

Figure 4: Windows 11 operating system interface.

The laptop also features Alexa Built-in. During setup, you may be prompted to configure Alexa for voice commands and smart home integration.



Figure 5: Alexa Built-in feature on the LG gram laptop.

## OPERATING YOUR LG GRAM LAPTOP

### 1. Display Features

The LG gram 17Z95P features a 17-inch WQXGA (2560x1600) IPS LCD display with DCI-P3 99% color expression, providing clear and vibrant visuals for various tasks.

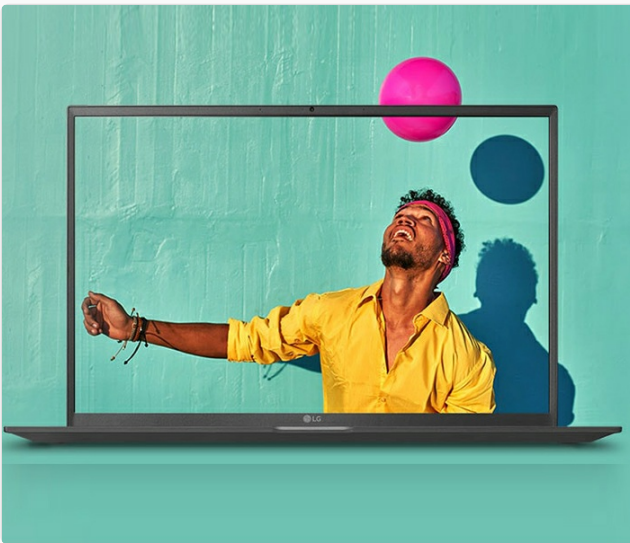


WQXGA IPS Display

### **Think Bigger, See Bigger with a 16:10 Display**

Bring pro-grade workflow to your hustle. LG's newest lineup features a 17-inch display for our most immersive experience yet. The large IPS display delivers 16:10 WQXGA (2560x1600) resolution for clear, vivid color expression.

Figure 6: The 17-inch WQXGA IPS Display offers high resolution and clarity.



### **DCI-P3 99% (Typ.) Wide Color Gamut\***

The DCI-P3 99% (Typ.) wide color gamut enables brilliant colors, so you'll see your work the way you imagine it.

Figure 7: DCI-P3 99% Wide Color Gamut for accurate and rich color reproduction.

## **2. Keyboard and Touchpad**

The laptop features a traditional QWERTY keyboard and a widened 16:10 touchpad for comfortable and efficient input. The keyboard is designed with enhanced key pitch and stroke for improved typing action.



Figure 8: Keyboard and touchpad layout.

### 3. Performance and Storage

Powered by an Intel Evo 11th Generation Core i7-1195G7 Processor with Intel Iris Xe Graphics, 16GB LPDDR4X RAM, and a 1TB NVMe SSD, the laptop delivers robust performance for multitasking and demanding applications.



Figure 9: Intel Evo platform ensures responsive performance and long battery life.

## 4. Audio Features

The laptop includes built-in speakers and supports headphones as audio output types, providing basic audio capabilities for media consumption and communication.

## MAINTENANCE

### 1. Battery Care

To maximize battery life, avoid fully discharging the battery frequently. For long-term storage, charge the battery to approximately 50-70% and store the laptop in a cool, dry place.

The laptop is equipped with an 80Wh Lithium-Ion battery, designed for extended use.

### 2. Cleaning

Use a soft, lint-free cloth to clean the screen and exterior surfaces. For stubborn smudges, dampen the cloth with a small amount of water or a screen-safe cleaning solution. Avoid harsh chemicals or abrasive materials.

### 3. Software Updates

Regularly check for and install Windows updates and LG driver updates to ensure optimal performance, security, and compatibility.

## TROUBLESHOOTING

### Common Issues and Solutions:

- **Laptop not powering on:** Ensure the power adapter is securely connected and the battery has sufficient charge. Try a different power outlet.
- **Webcam not working:** Check privacy settings in Windows 11 to ensure camera access is enabled for applications. Verify that the webcam is not in "Secure Mode" (if applicable, refer to LG support for specific key combinations like Fn + F4). Ensure all drivers are up to date.
- **Overheating:** Ensure proper ventilation by not blocking air vents. Use the laptop on a hard, flat surface. Reduce the workload if the laptop consistently runs hot.
- **Slow performance:** Close unnecessary applications, check for background processes, ensure sufficient free storage space, and run system maintenance tools.

For persistent issues, consult the LG support website or contact customer service.

## SPECIFICATIONS

Feature	Detail
Brand	LG
Model Name	17Z95P-K.AAB8U1
Screen Size	17 Inches
Display Resolution	WQXGA (2560x1600) IPS LCD
CPU Model	Intel Evo 11th Gen Core i7-1195G7
RAM Memory	16GB LPDDR4X 4266MHz
Hard Disk Size	1TB PCIe M.2 NVMe SSD
Operating System	Windows 11 Home
Graphics Coprocessor	Intel Iris Xe Graphics
Battery	80Wh Lithium-Ion
Connectivity	2x USB-C (Thunderbolt 4), 2x USB-A 3.2, 1x HDMI, MicroSD, 3.5mm Audio Jack, Wi-Fi 6, Bluetooth 5.2
Weight	2.98 Pounds
Dimensions (L x W x Th)	14.97"L x 10.24"W x 0.7"Th
Special Features	Alexa Built-in, Face Recognition

## WARRANTY AND SUPPORT

---

Your LG gram 17Z95P laptop comes with a **1-year manufacturer's limited warranty**. For detailed warranty terms and conditions, please refer to the included Warranty Card or visit the official LG support website.

For technical assistance, driver downloads, or service requests, please contact LG customer support. Keep your model number (17Z95P-K.AAB8U1) and serial number ready when contacting support.

**Online Resources:** [LG Support Website](#)

---