

Manuals+

[Q & A](#) | [Deep Search](#) | [Upload](#)

manuals.plus /

› [ELUXE](#) /

› [ELUXE Go Glow Kit Instruction Manual](#)

ELUXE B09FXBRSVP

ELUXE Go Glow Kit Instruction Manual

Model: B09FXBRSVP

Brand: ELUXE

1. PRODUCT OVERVIEW

The ELUXE Go Glow Kit includes a Carbonic Acid Shampoo and a Rejuvenating Conditioner, designed to transform your hair care routine. This set aims to repair damage, protect hair length, seal split ends, and impart radiant shine, leaving hair smooth, healthy, and frizz-free.

It is formulated with carbonic acid, 100% natural essential oils, vitamins, amino acids, and natural nutrients to deeply hydrate, soften, improve elasticity, and boost overall hair health and thickness.



Image: The ELUXE Go Glow Kit featuring the Sparkling Shampoo and Rejuvenating Conditioner bottles.

2. SAFETY INFORMATION

For external use only. Avoid eye contact. If contact occurs, flush immediately with water. If irritation persists, consult your ophthalmologist. Discontinue use if you notice skin redness, swelling, itching, or other irritation. Do not use if you have open sores, swelling, or other skin problems on the scalp.

3. INGREDIENTS

Key ingredients include Camellia Japonica Seed Oil. The formula is free from sulfates and parabens, utilizing globally sourced ingredients to nourish, repair, and moisturize hair.

4. SETUP AND APPLICATION

4.1. Shampoo Application

1. Moisten the scalp and hair thoroughly with lukewarm water.
2. Shake the shampoo bottle well. Hold the can upside down and dispense a small amount (a few beads) onto your hand.

3. Apply the shampoo to the entire scalp and massage gently to create a rich foam.
4. Rinse thoroughly with water.

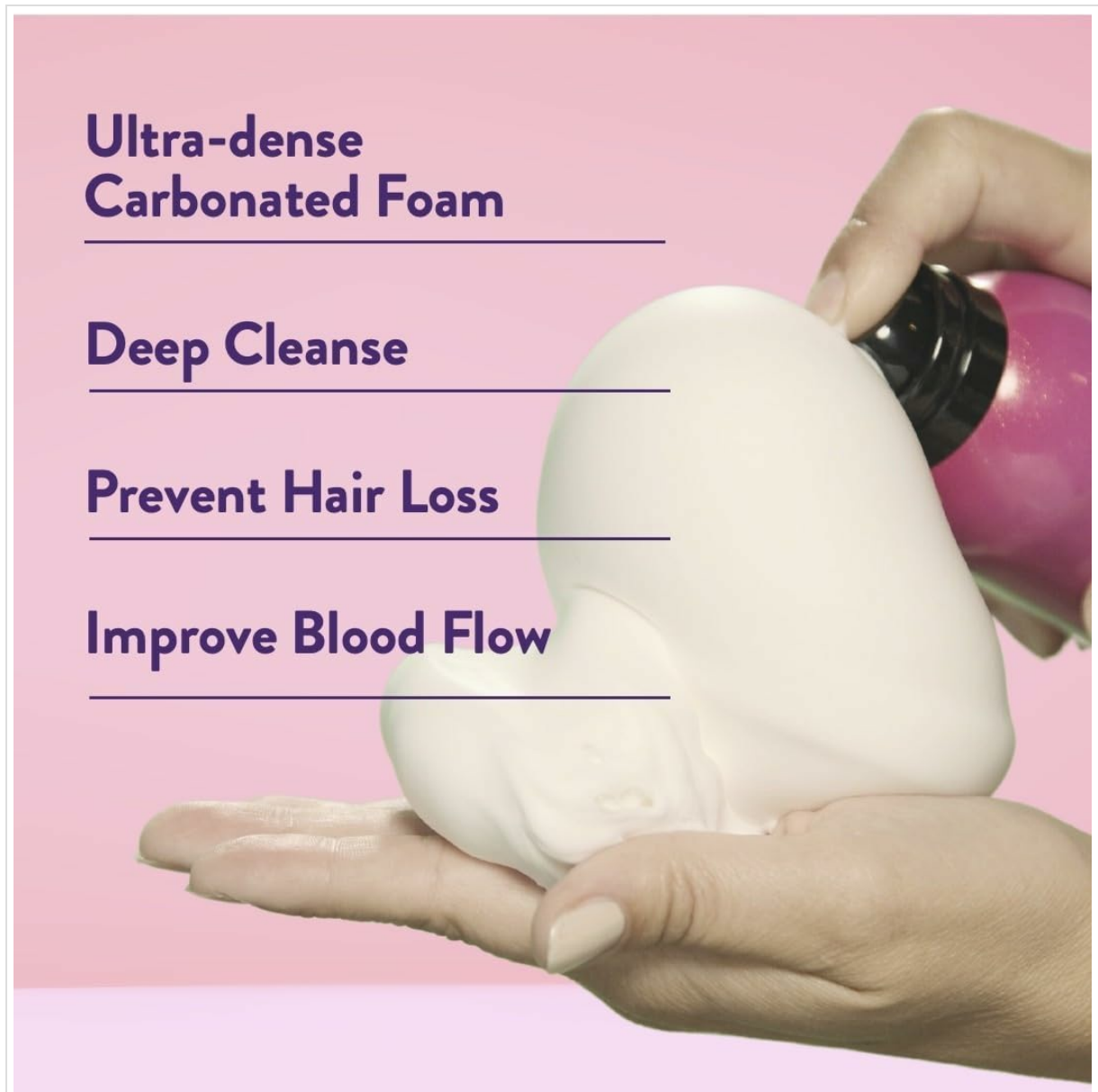


Image: Dispensing the ultra-dense carbonated foam of ELUXE Sparkling Shampoo.

4.2. Conditioner Application

After shampooing, apply an appropriate amount of ELUXE Rejuvenating Conditioner to your hair. Massage it in, focusing on the mid-lengths to ends. Rinse thoroughly.

Top Benefits



HIGH MOISTURIZING

3 non-toxic compounds



CONDITIONING AND PROTECTION

6 organic oils and extracts

7 compounds to fight split ends



ACIDIFYING

4 ingredients carefully

PH-balanced to strengthen hair



Image: The ELUXE Rejuvenating Conditioner tube, designed for deep conditioning.

5. OPERATING INSTRUCTIONS

For optimal results, integrate the ELUXE Go Glow Kit into your regular hair care routine. The carbonic acid shampoo deeply cleanses and purifies, while the rejuvenating conditioner deeply conditions and softens. For enhanced shine and breakage prevention, consider using a hair oil after conditioning.



Image: Visual comparison demonstrating the improved smoothness and shine of hair after using the ELUXE Go Glow Kit.

Official Product Video: ELUXE Embrace your shine

Your browser does not support the video tag.

Video: A short promotional video from the seller demonstrating the application of ELUXE shampoo and conditioner, highlighting the ease of use and resulting hair texture.

6. MAINTENANCE

Store the product in a cool, dry place, away from direct sunlight. Ensure caps are tightly closed after each use to maintain product efficacy. Do not store in extremely hot or cold temperatures (above 40°C or below 0°C), as there is a risk of explosion due to high pressure contents.

7. TROUBLESHOOTING

- **Hair feels dry or frizzy after use:** Ensure you are using both the shampoo and conditioner as directed. For very dry hair, consider leaving the conditioner on for an extra minute or two.
- **Product not dispensing properly:** Ensure the can is held upside down when dispensing the shampoo. If the nozzle is clogged, rinse it with warm water.
- **Lack of desired shine:** Ensure thorough rinsing of both products. Residual product can weigh hair

down.

8. SPECIFICATIONS

Feature	Detail
Brand	ELUXE
Model Number (ASIN)	B09FXBRSVP
UPC	850035481066
Package Dimensions	10.98 x 8.66 x 3.15 inches
Item Weight	15.2 ounces
Product Benefits	Damage Control
Item Form	Aerosol (Shampoo)
Hair Type	All
Scent	Mint
Manufacturer	Seiseidou America, Inc.
Country of Origin	USA

9. WARRANTY AND SUPPORT

For warranty information or product support, please refer to the contact details provided on the product packaging or visit the official ELUXE website. Keep your purchase receipt for any warranty claims.