

## EGLO 900062

# EGLO connect.z Turcona-Z Smart LED Ceiling Panel User Manual

Model: 900062 (120 x 10 cm)

## 1. INTRODUCTION

Thank you for choosing the EGLO connect.z Turcona-Z Smart LED Ceiling Panel. This intelligent lighting fixture offers a wide range of features, including tunable white light (warm to cool), RGB color options, and dimming capabilities. Control is seamless via the AwoX app, an optional connect.z remote, or voice commands through compatible smart home systems like Amazon Alexa and Google Nest using ZigBee 3.0 technology.



Image 1.1: The EGLO connect.z Turcona-Z Smart LED Ceiling Panel.

## 2. SAFETY INFORMATION

Please read these safety instructions carefully before installation and use. Failure to follow these instructions may result in electric shock, fire, or other hazards.

- **Electrical Safety:** Always disconnect power at the main circuit breaker before installing, cleaning, or servicing the fixture. Installation should be performed by a qualified electrician if you are unsure.
- **Indoor Use Only:** This product is rated IP20, meaning it is protected against solid objects larger than 12.5mm but has no protection against water. Do not use in wet or damp locations.
- **Voltage:** Ensure the supply voltage matches the fixture's requirements (230 Volts).

- **Heat:** Do not cover the fixture or place it near heat sources.
- **Cleaning:** Use a soft, dry cloth for cleaning. Do not use abrasive cleaners or solvents.
- **Non-Replaceable LED:** The LED light source in this luminaire is not replaceable. When the light source reaches its end of life, the entire luminaire shall be replaced.

### 3. PACKAGE CONTENTS

Verify that all components are present and undamaged:

- 1x EGLO connect.z Turcona-Z Smart LED Ceiling Panel (Model 900062)
- Mounting hardware (screws, anchors)
- Instruction Manual

### 4. INSTALLATION

Follow these steps for proper installation. If you are not confident in performing electrical work, consult a qualified electrician.

1. **Disconnect Power:** Turn off the electricity at the main circuit breaker before starting installation.
2. **Prepare Mounting Surface:** Choose a suitable location on the ceiling. Use the mounting bracket as a template to mark the drilling points.
3. **Install Mounting Bracket:** Drill holes at the marked points and insert appropriate wall anchors (if necessary). Secure the mounting bracket to the ceiling using the provided screws.
4. **Wiring Connections:** Connect the household electrical wires to the fixture's wires. Ensure correct polarity (Live to Live, Neutral to Neutral, Ground to Ground). Use appropriate wire connectors.
5. **Attach Fixture:** Carefully align the LED panel with the mounting bracket and secure it in place. Ensure all connections are firm and the fixture is stable.
6. **Restore Power:** Once the fixture is securely mounted and wired, restore power at the circuit breaker.

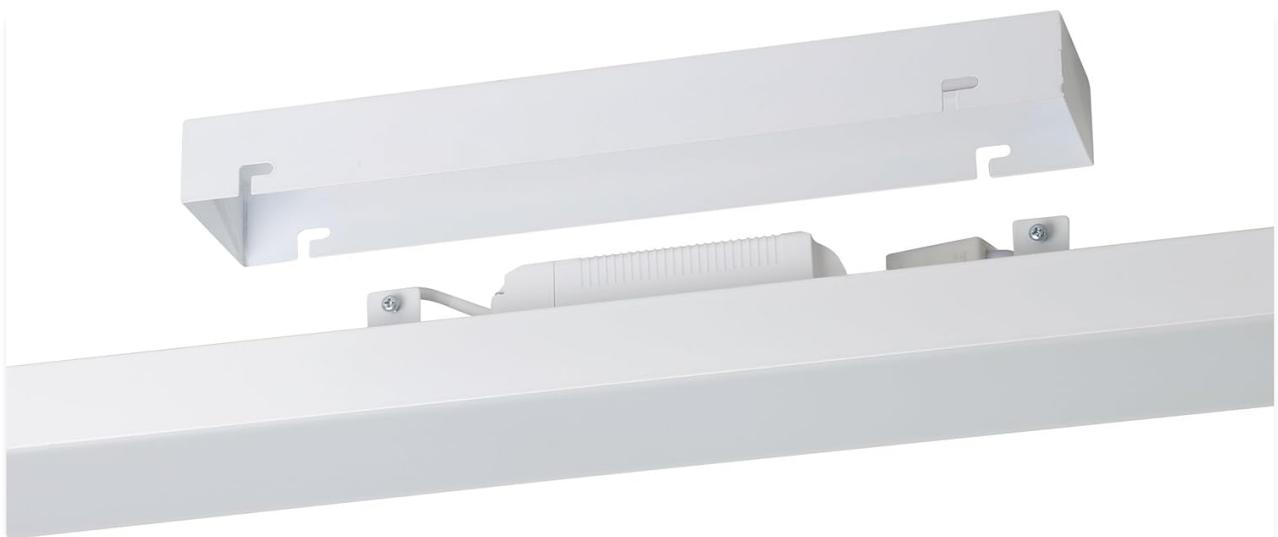


Image 4.1: View of the mounting mechanism and internal components.



Image 4.2: Product dimensions: 120 cm (47.24 inch) length, 10 cm (3.94 inch) width, 7.5 cm (2.95 inch) height.

## 5. INITIAL SETUP AND SMART HOME INTEGRATION

The EGLO connect.z Turcona-Z offers flexible control options.

### 5.1. AwoX App Control (Bluetooth)

1. **Download App:** Download the 'AwoX Smart CONTROL' app from your smartphone's app store (iOS or Android).
2. **Enable Bluetooth:** Ensure Bluetooth is enabled on your smartphone.
3. **Pair Device:** Open the AwoX app and follow the on-screen instructions to add a new device. The app will detect your EGLO connect.z light.
4. **Control:** Once paired, you can control the light's functions directly from the app.

### 5.2. ZigBee 3.0 Smart Home Integration (Voice Control)

For voice control via Amazon Alexa or Google Nest, a compatible smart home hub with integrated ZigBee bridge is required.

1. **Ensure Hub Compatibility:** Verify your smart home hub (e.g., Amazon Echo 4th Gen, Google Nest Hub) supports ZigBee 3.0. For older Echo devices (1st-3rd Gen) or Echo Show models, an additional WiFi + Zigbee Gateway might be necessary.
2. **Discovery Mode:** Put your smart home hub into device discovery mode (refer to your hub's instructions).
3. **Power Cycle Light:** Turn the EGLO connect.z light off and on at the wall switch to initiate pairing mode.
4. **Pairing:** The hub should detect and add the light. You can then assign it to a room or group.



Image 5.1: Voice control is possible with compatible voice assistants like Alexa and Google Nest.

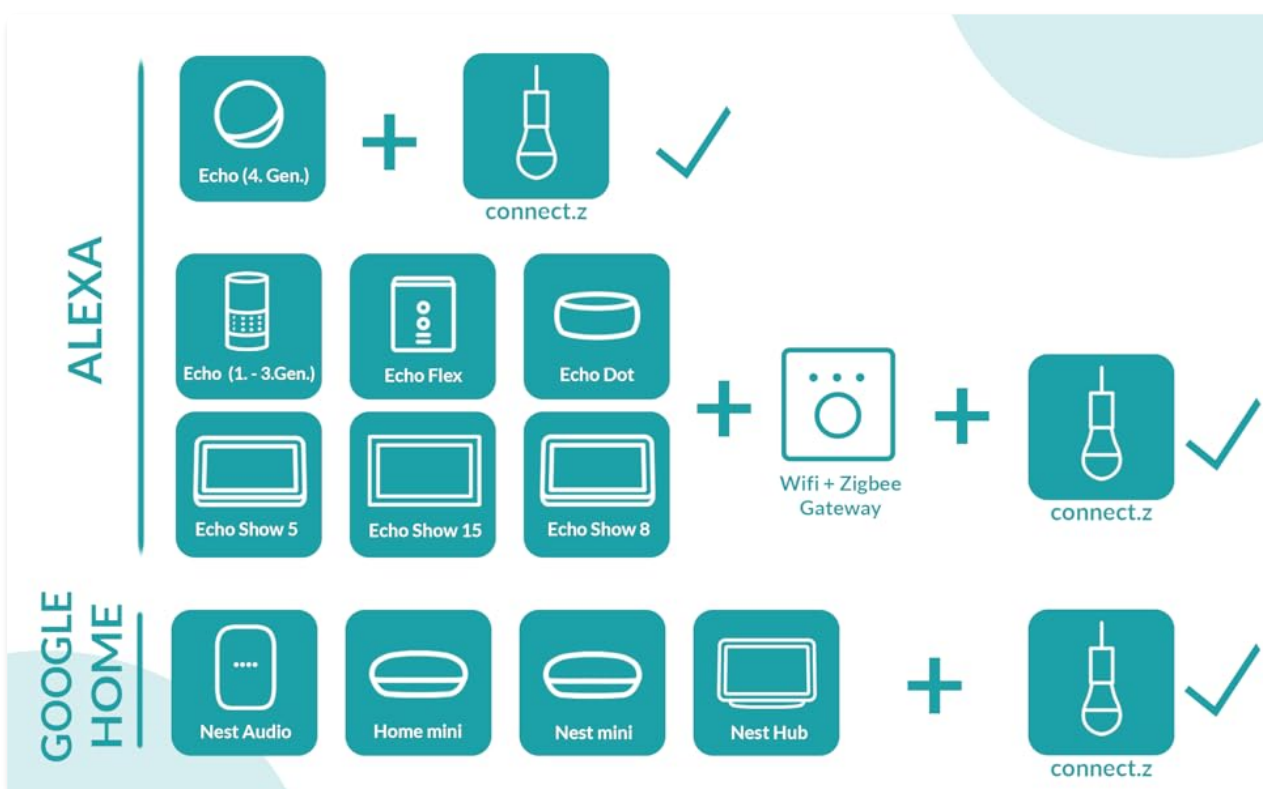


Image 5.2: Compatibility chart for Alexa and Google Home. Some devices may require an additional Zigbee Gateway.

### 5.3. Optional connect.z Remote Control

An EGLO connect.z remote control (EGLO 99099) can be purchased separately for direct control without a smartphone or voice assistant.

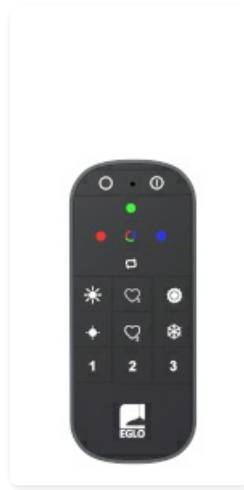


Image 5.3: The optional EGLO connect.z remote control (EGLO 99099).

## 6. OPERATING INSTRUCTIONS

The EGLO connect.z Turcona-Z offers a variety of functions accessible through the AwoX app or compatible smart home systems.

### 6.1. Basic Functions (App/Remote/Voice)

- **On/Off:** Turn the light on or off.
- **Dimming:** Adjust the brightness level from 1% to 100%.
- **Color Temperature:** Change the white light from warm white (2700K) to neutral white to cool white (6500K).
- **RGB Colors:** Select from millions of colors to create different moods.



Image 6.1: The panel providing warm white illumination.





Image 6.2: The panel providing cool white illumination.

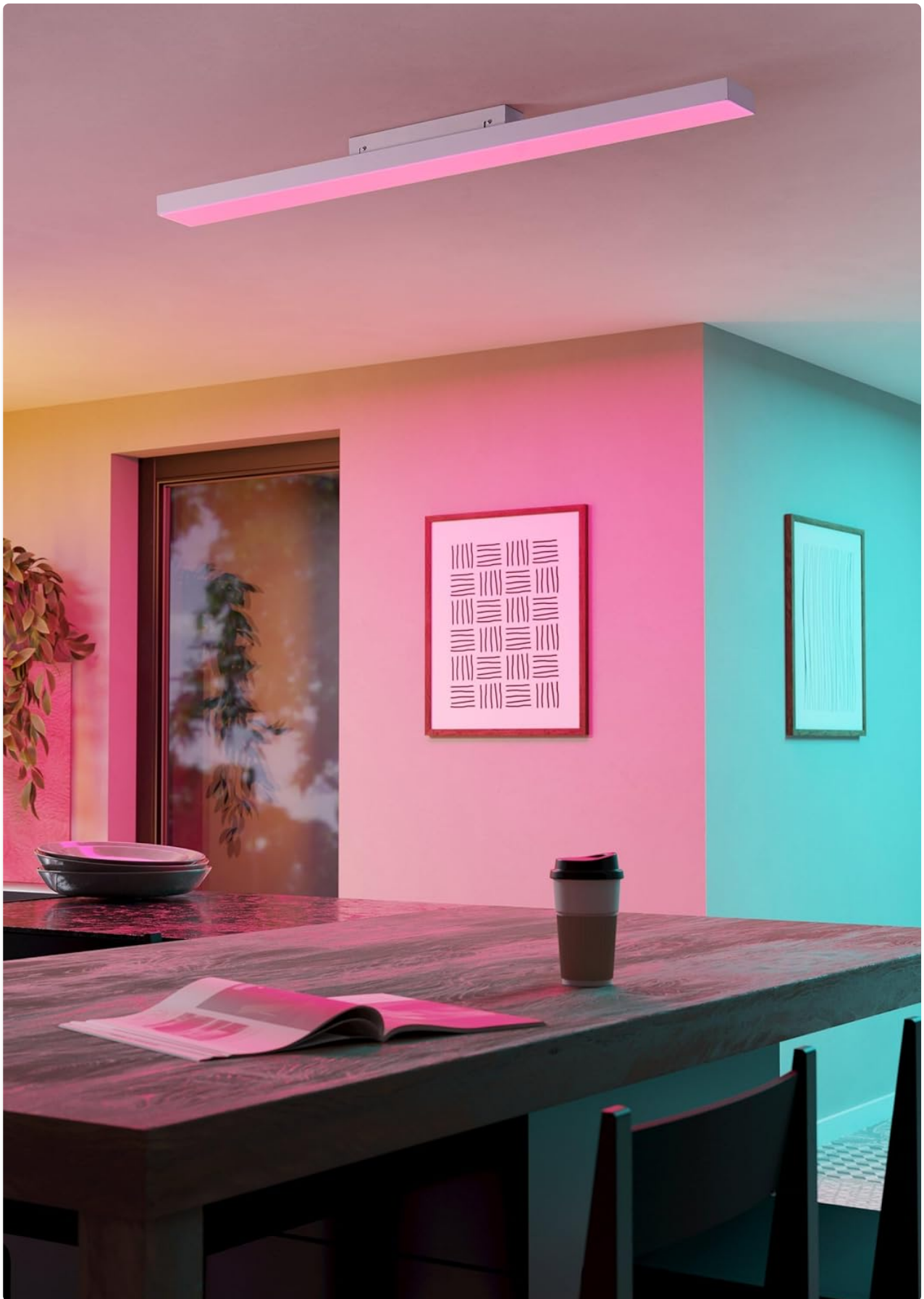


Image 6.3: The panel displaying vibrant RGB colors.

## 6.2. Advanced App Functions

The AwoX app unlocks additional smart features:

- **Timer:** Schedule the light to turn on or off at specific times.



- **Twilight Simulation:** Gradually dim the light to simulate sunset.
- **Night Light:** Set a very low brightness for subtle illumination.
- **Favorites:** Save your preferred light settings (brightness, color, color temperature) for quick access.
- **Grouping:** Control multiple EGLO connect.z lights simultaneously by grouping them in the app.
- **Light Alarm:** Use the light to gently wake you up by gradually increasing brightness.
- **Presence Simulation:** Mimic occupancy by turning lights on and off randomly when you are away.
- **Disco Function:** Synchronize light changes with music or create dynamic color effects.



Image 6.4: Overview of app functions including Timer, RGB, Dimming, Save Favorites, Color Temperature, Save Light Groups, Twilight Simulation, Night Light, Disco Function, Light Alarm, and Presence Simulation.

## 7. MAINTENANCE

The EGLO connect.z Turcona-Z LED panel requires minimal maintenance.

- **Cleaning:** Ensure the power is off before cleaning. Wipe the fixture with a soft, dry, or slightly damp cloth. Do not use harsh chemicals, abrasive cleaners, or sprays directly on the light.
- **LED Lifespan:** The integrated LED light source has an average lifespan of 20,000 hours and is not user-replaceable.

## 8. TROUBLESHOOTING

If you encounter issues with your EGLO connect.z Turcona-Z, refer to the following common problems and solutions:

Problem	Possible Cause	Solution
Light does not turn on.	No power supply. Loose wiring. Faulty fixture.	Check circuit breaker. Ensure wiring is secure. Contact customer support if the fixture is faulty.
Cannot connect to AwoX app.	Bluetooth is off. Light is out of range. Light is already paired.	Ensure Bluetooth is on. Move closer to the light. Try resetting the light by power cycling it (turn off/on 5 times).
Voice control not working.	No ZigBee hub or incompatible hub. Light not paired with hub. Internet connection issue.	Ensure you have a compatible ZigBee hub. Follow ZigBee pairing steps (Section 5.2). Check your internet connection.
Light flickers or behaves erratically.	Unstable power supply. Interference.	Check electrical connections. Ensure no other devices are causing interference. Power cycle the light.

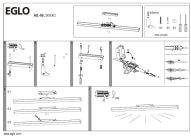

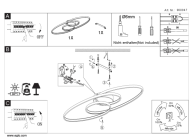

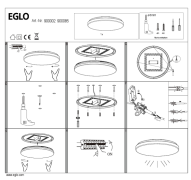
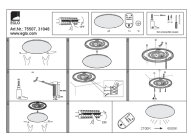
## 9. SPECIFICATIONS

Feature	Detail
Brand	EGLO
Model Number	900062
Dimensions (L x W x H)	120 x 10 x 7 cm (approx. 47.24 x 3.94 x 2.76 inches)
Weight	1.21 Kilograms
Material	Aluminum, Plastic
Color	White
Power	34.2 Watts
Luminous Flux	3910 Lumens
Color Temperature	2700 - 6500 Kelvin (Tunable White) + RGB
Dimmable	Yes
Connectivity	Bluetooth, ZigBee 3.0
Voltage	230 Volts
IP Rating	IP20 (Indoor Use Only)
Average Lifespan	20,000 Hours
Energy Efficiency Class	F

## 10. WARRANTY AND SUPPORT

For warranty information and customer support, please refer to the documentation provided with your purchase or visit the official EGLO website. Keep your proof of purchase for any warranty claims.

### Related Documents - 900062

	<p><a href="#">EGLO TURCONA-Z LED Panel Light - Installation and Assembly Instructions</a></p> <p>Comprehensive guide for installing the EGLO TURCONA-Z LED panel light (Art.-Nr. 900062). Covers mounting, electrical connections, and operation.</p>
	<p><a href="#">EGLO connect.z Smart Home System User Manual</a></p> <p>Comprehensive user manual for the EGLO connect.z smart home lighting system. Learn how to set up and control your lights using the remote control, AwoX HomeControl app, and voice assistants like Amazon Alexa and Google Assistant. Includes information on motion sensors, troubleshooting, and system compatibility.</p>
	<p><a href="#">EGLO GIANELLA LED Ceiling Lamp - Installation and Operation Guide</a></p> <p>Detailed instructions for installing and operating the EGLO GIANELLA LED ceiling lamp, including wiring diagrams, assembly steps, and dimming control features. Article number 900947.</p>
	<p><a href="#">EGLO connect.z User Guide: Smart Lighting System Setup and Control</a></p> <p>Comprehensive user guide for the EGLO connect.z smart lighting system. Learn how to set up and control lights via remote, AwoX HomeControl app, Amazon Alexa, and Google Assistant. Includes troubleshooting and feature explanations.</p>
	<p><a href="#">EGLO TOTARI-Z LED Ceiling Light Installation Guide</a></p> <p>Step-by-step instructions for installing the EGLO TOTARI-Z LED ceiling light, including mounting, wiring, and assembly.</p>
	<p><a href="#">EGLO GIRON-TW LED Ceiling Light Installation and Remote Control Guide (Art.Nr. 75507, 31048)</a></p> <p>Comprehensive guide for installing the EGLO GIRON-TW LED ceiling light (Article Numbers 75507, 31048) and operating its ET3386 IR remote control for brightness and color temperature adjustments.</p>