



Manuals.plus /

› Mintu /

› Mintu Refrigerator Ice Maker Replacement Manual for Whirlpool WRS325FDAT02

Mintu WRS325FDAT02

Mintu Refrigerator Ice Maker Replacement Instruction Manual

Model: WRS325FDAT02 and compatible models

INTRODUCTION

This manual provides instructions for the installation, operation, and maintenance of your new Mintu Refrigerator Ice Maker Replacement. Please read these instructions carefully before installation and use to ensure proper function and longevity of the product. This ice maker is designed as a replacement part for various Whirlpool, Amana, Kenmore, and Maytag refrigerator models, including WRS325FDAT02.

SAFETY INFORMATION

- Always disconnect power to the refrigerator before attempting any installation or repair.
- Wear appropriate personal protective equipment, such as gloves, during installation.
- If you are unsure about any step, consult a qualified appliance technician.
- Ensure all connections are secure after installation to prevent leaks or electrical hazards.

PACKAGE CONTENTS

Verify that all components are present before beginning installation:

- Mintu Refrigerator Ice Maker Replacement Unit
- Instruction Manual (this document)

Note: Additional mounting hardware or wiring harnesses may be required depending on your specific refrigerator model and are typically reused from the original unit or purchased separately if damaged.

SETUP AND INSTALLATION

Follow these steps for proper installation of the ice maker replacement unit:

1. **Disconnect Power:** Unplug the refrigerator from the electrical outlet or turn off the circuit breaker supplying power to the refrigerator.
2. **Access Old Ice Maker:** Open the freezer door and locate the existing ice maker. Depending on your refrigerator model, you may need to remove shelves or the ice bucket to gain access.
3. **Remove Old Ice Maker:** Disconnect any wiring harnesses and water lines attached to the old ice maker. Carefully unmount the old unit from its position. Note the orientation and mounting points for the new unit.
4. **Install New Ice Maker:** Position the new Mintu ice maker in the same location as the old unit. Secure it using the existing mounting screws or clips. Ensure it is firmly in place.
5. **Connect Wiring and Water Line:** Reconnect the electrical wiring harness to the new ice maker. Ensure the water fill tube is properly aligned with the ice maker's water inlet.



Image 1: The Mintu Refrigerator Ice Maker Replacement unit. This image shows the complete ice maker assembly, including the ice mold, ejector mechanism, and control housing.



Image 2: A close-up view of the ice maker's ejector arm and water fill cup. This component is responsible for pushing ice cubes out of the mold and into the ice bucket.



Image 3: Another detailed view of the ice maker's sensor arm and water fill cup. The sensor arm detects the level of ice in the bucket and signals the ice maker to stop production when full.

6. **Restore Power:** Plug the refrigerator back into the electrical outlet or turn on the circuit breaker.
7. **Initial Operation:** The ice maker will begin its first cycle. It may take up to 24 hours for the unit to produce its first batch of ice, especially if the freezer temperature is not yet below 10°F (-12°C).
8. **Remove Label:** A label on the unit provides important initial operating information. This label should be peeled off after installation is complete.



Image 4: A label on the side of the ice maker unit stating that ice production requires a freezer temperature below 10°F and may take up to 24 hours for a new unit. This label should be removed after installation.

OPERATING INSTRUCTIONS

Once installed, the ice maker operates automatically. It will fill with water, freeze the water into cubes, and then eject the cubes into the ice bucket. The sensor arm monitors the ice level in the bucket and will pause ice production when the bucket is full, resuming when ice is removed.

- Ensure the water supply to the refrigerator is turned on.
- Keep the freezer door closed as much as possible to maintain optimal freezing temperatures.
- Do not obstruct the sensor arm or the ice chute.

MAINTENANCE

Regular maintenance helps ensure efficient operation:

- **Cleaning:** Periodically remove the ice bucket and wash it with mild soap and warm water. Rinse thoroughly and dry before returning it to the freezer.
- **Water Filter:** Ensure your refrigerator's water filter is replaced according to the manufacturer's

recommendations to prevent mineral buildup in the ice maker.

- **Inspection:** Occasionally inspect the ice maker for any signs of wear, damage, or unusual ice formation.

TROUBLESHOOTING

If your ice maker is not functioning as expected, consider the following common issues and solutions:

Problem	Possible Cause	Solution
No ice production	Refrigerator not connected to power; Freezer temperature too high; Water supply off or clogged; New unit not cycled yet; Sensor arm obstructed.	Check power connection; Ensure freezer is below 10°F (-12°C); Verify water supply is on and filter is not clogged; Allow up to 24 hours for first cycle; Clear any obstructions around the sensor arm.
Small or hollow ice cubes	Low water pressure; Clogged water filter; Partially frozen water line.	Check household water pressure; Replace water filter; Thaw water line if frozen (disconnect power first).
Ice maker making unusual noises	Normal operation sounds; Loose components; Motor issue.	Some sounds are normal during filling and ejection; Check for loose parts; If persistent or loud, contact support.

If troubleshooting steps do not resolve the issue, please contact customer support.

SPECIFICATIONS

- **Brand:** Mintu
- **Model Number:** WRS325FDAT02 (Replacement for various models)
- **Voltage:** 25 Volts (AC)
- **Wattage:** 250 watts
- **UPC:** 824252619755
- **Compatibility:** Designed to replace ice makers in specific Whirlpool, Amana, Kenmore, and Maytag refrigerator models. Refer to product listing for full compatibility list.

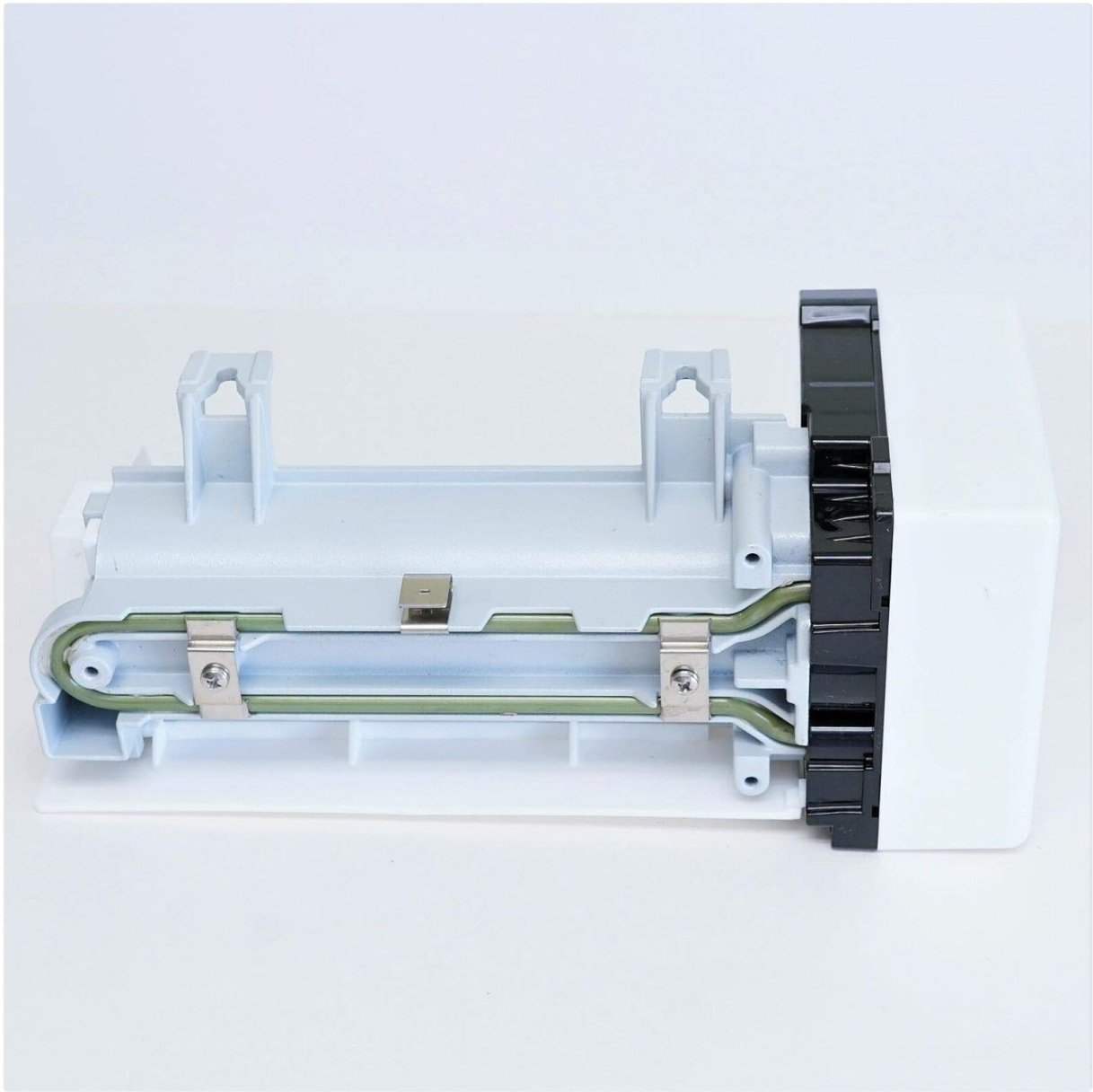


Image 5: An underside view of the ice maker unit, showing the heating element and internal wiring. This element assists in releasing ice cubes from the mold.

WARRANTY AND SUPPORT

For warranty information or technical assistance, please contact Mintu customer support through the retailer where the product was purchased or refer to the official Mintu website. Keep your purchase receipt as proof of purchase.