

## POFAN TX\*1+RX\*1

# POFAN Wireless HDMI Transmitter and Receiver 4K Kit (Model: TX\*1+RX\*1) - Instruction Manual

Brand: POFAN | Model: TX\*1+RX\*1

## 1. INTRODUCTION

---

This manual provides detailed instructions for the setup, operation, and maintenance of your POFAN Wireless HDMI Transmitter and Receiver 4K Kit. This device enables seamless wireless transmission of 4K video and audio from various source devices to a display, eliminating the need for long, cumbersome cables. It is designed for ease of use in home entertainment, business meetings, and educational environments.

## 2. PACKAGE CONTENTS

---

Please verify that all items listed below are included in your package:

- Wireless HDMI Receiver (1 unit)
- Wireless HDMI Transmitter (1 unit)
- USB-C Charging Cables (2 units)
- HDMI Cable (1 unit)
- Instruction Manual (this document)
- *Note: A 5V/1A or above charger is required but not included.*



*Image: Unboxing the POFAN Wireless HDMI Kit, displaying the receiver, transmitter, various cables, and the instruction manual.*

Your browser does not support the video tag.

*Video: This video demonstrates the contents of the POFAN Wireless HDMI Kit package, including the receiver, transmitter, and connecting cables.*

### 3. PRODUCT OVERVIEW

Familiarize yourself with the components of your Wireless HDMI Kit:



Image: A detailed diagram illustrating the various ports and indicator lights on both the Wireless HDMI Receiver and Transmitter.

#### Receiver

- **3.5MM Audio Jack:** For external audio output.
- **USB-C Input:** Power input for the receiver.
- **HDMI Port:** Connects to your display (TV, projector, monitor).
- **VGA Port:** Alternative video output for older displays.
- **Antenna (x2):** For stable wireless signal reception.
- **Power Indicator Light:** Shows power status.
- **ON/OFF Button:** To power the receiver on or off.
- **Pairing Button (on back):** Used for pairing with transmitters.

#### Transmitter

- **HDMI Male Connector:** Plugs into your source device (laptop, PC, game console).
- **USB-C Input:** Power input for the transmitter.
- **Signal Projection Switch:** Button to initiate or switch projection.
- **Power Indicator Light:** Shows power and connection status.

## 4. SETUP INSTRUCTIONS

---

Follow these steps for initial setup and pairing:

### 1. Connect the Receiver:

- Connect the HDMI cable from the receiver's HDMI port to an available HDMI input on your TV, projector, or monitor.
- Connect one of the USB-C charging cables to the receiver's USB-C input and the other end to a 5V/1A or higher power adapter (not included) or a powered USB port on your display. Ensure the receiver is powered on.

### 2. Connect the Transmitter:

- Plug the transmitter's HDMI male connector into the HDMI output port of your source device (e.g., laptop, PC).
- Connect the second USB-C charging cable to the transmitter's USB-C input and the other end to a powered USB port on your source device or a 5V/1A or higher power adapter.

### 3. Pairing the Devices:

- On the receiver, use a thin tool (like a thimble or paperclip) to press and hold the "Pairing" button (usually located on the back or bottom) for 3-5 seconds until the indicator light starts flashing.
- On the transmitter, press and hold the "Signal Projection Switch" button for 5-8 seconds until its indicator light starts flashing.
- The devices will automatically pair. Once paired, the transmitter's indicator light will turn solid, and your source device's screen will appear on the connected display.

# Make Meetings More Convenient



Image: Visual guide for the easy plug-and-play installation, demonstrating connections from a laptop to a monitor and a tablet to a TV.

Your browser does not support the video tag.

Video: This video demonstrates the process of connecting the wireless HDMI transmitter to a computer and displaying its content on a larger screen.

## 5. OPERATING INSTRUCTIONS

### Screen Mirroring / Extended Display

Once paired, your device will automatically mirror your source screen. To switch between mirroring and extended display modes (if supported by your operating system), adjust your display settings on your source device (e.g., Windows Display Settings or macOS System Preferences).

# Two connection modes: same screen/split screen

**Copy mode:** the small screen of the notebook becomes larger screen, and the details are clearer

**Extended mode:** the small screen and large screen display different content without interfering with each other, making office more convenient

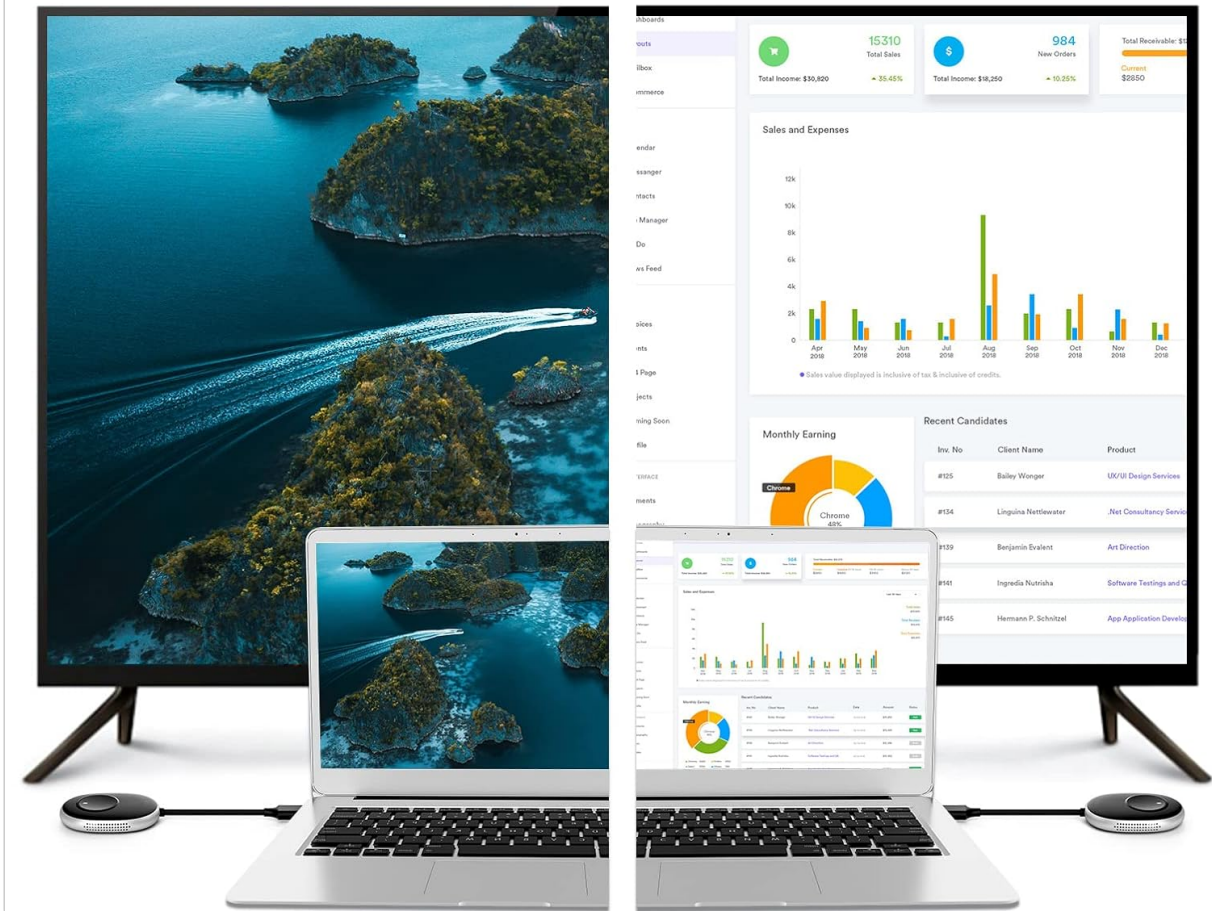


Image: Explanation of Copy mode (mirroring) and Extended mode for displaying content across multiple screens.

## One-Key Switch (for multiple transmitters)

If you have multiple transmitters paired with a single receiver (up to 8 transmitters supported), you can switch between them by simply pressing the "Signal Projection Switch" button on the desired transmitter. This allows for quick and efficient content sharing in collaborative environments.

## Many-to One Mode One Click Switch

8 transmitters can be connected to 1 receiver at the same time, one click switch, does not interfere with each other, and multiple screens can be shared.

\* This operation requires additional purchase of transmitters, and the 1 receiver can support up to 8 transmitters.



Image: A visual representation of the "Many-to-One Mode" where multiple transmitters can connect to a single receiver, allowing for easy switching between sources.

Your browser does not support the video tag.

Video: This video demonstrates the seamless switching between multiple transmitters connected to a single receiver, ideal for presentations.

## 6. MOBILE DEVICE CONNECTION (SMARTPHONE/TABLET)

The receiver can also function as a wireless HDMI dongle for smartphones and tablets. Follow these general steps:

1. Ensure the receiver is powered on and connected to your display.
2. On your smartphone or tablet, enable Wi-Fi and connect to the receiver's Wi-Fi network (SSID usually displayed on the screen, e.g., "RX-BF3324C0"). The default password is typically "12345678".
3. Once connected, activate your device's screen mirroring feature (e.g., Smart View for Android, Screen Mirroring/AirPlay for iOS). Select the receiver from the list of available devices.
4. Your mobile device's screen should now be mirrored on the connected display.

# Mirror Mode

TV and mobile phone synchronization, clearer vision,  
giving you a great gaming experience



*Image: A smartphone mirroring its display to a television, showcasing the Mirror Mode functionality for gaming or media consumption.*

Your browser does not support the video tag.

*Video: This video illustrates the steps to connect a mobile phone to the wireless HDMI system for screen mirroring.*

## 7. TROUBLESHOOTING

---

If you encounter issues, please refer to the following common solutions:

- **No Signal or Intermittent Connection:**

- Ensure both the transmitter and receiver are connected to a stable power source (5V/1A or above charger). Insufficient power can cause interruptions or lag.
- Check that the HDMI cables are securely connected.
- Verify that the display is set to the correct HDMI input.
- If in different rooms or separated by thick walls, the transmission distance may be reduced. Try moving devices closer or ensuring a clear line of sight.
- Re-pair the transmitter and receiver if the connection is lost or unstable.

- **Lag or Stuttering Video:**

- Ensure adequate power supply to both units.
  - Reduce the distance between the transmitter and receiver.
  - Minimize interference from other wireless devices operating on the same frequency band (2.4G/5Ghz).
- **No Audio:**
    - Check audio settings on your source device and display.
    - Ensure the HDMI connection is secure.

## 8. SPECIFICATIONS

| Feature                   | Detail   |
|---------------------------|--|
| Brand                     | POFAN  |
| Model Name                | TX*1+RX*1  |
| Connectivity Technology   | Wireless   |
| Connector Type            | HDMI/VGA   |
| Resolution                | 4K@30Hz (supports 1080P Full HD/720P)                                      |
| Transmission Range        | Up to 165 feet (50 meters) in open areas; 3-5 meters through cement walls. |
| Wireless Frequency Band   | 2.4G/5Ghz dual band  |
| Multi-Transmitter Support | One receiver can pair with up to 8 transmitters                            |
| Power Input               | 5V/1A or above (charger not included)                                      |
| Dimensions                | 4.9 x 2.6 x 0.8 inches   |
| Item Weight               | 14.1 ounces  |

## 9. WARRANTY AND SUPPORT

For warranty information and technical support, please refer to the contact details provided on the product packaging or the official POFAN website. Keep your purchase receipt for warranty claims.