

HTC VIVE Pro 2

HTC VIVE Pro 2 Virtual Reality System Full System User Manual

Brand: HTC | Model: VIVE Pro 2

INTRODUCTION

This manual provides comprehensive instructions for setting up, operating, maintaining, and troubleshooting your HTC VIVE Pro 2 Virtual Reality System. Please read this manual carefully before using the device to ensure optimal performance and safety.



Image: The complete HTC VIVE Pro 2 Virtual Reality System, showcasing the headset, two wireless controllers, and two base stations.

SETUP GUIDE

Follow these steps to properly set up your VIVE Pro 2 system.

1. Base Station Setup

The base stations provide precise tracking for your VR experience. Proper placement is crucial.

- Place base stations 5 meters (16 feet 4 inches) apart to ensure a 150-degree horizontal field of view.
- Mount base stations above head height, ideally over 2 meters (6.5 feet) above the floor.
- Tilt base stations down to an angle between 25 to 35 degrees towards the center of your play area.



Image: Two VIVE Base Station 2.0 units, essential for accurate tracking within the virtual environment.

2. Headset Connection to Computer

Connect the VIVE Pro 2 headset to your computer using the provided Link Box.

1. Connect the cables from the headset to the VIVE Link Box (2.0).
2. Connect the USB cable from the Link Box to a USB 3.0 port on your computer.
3. Connect the DisplayPort cable from the Link Box to your graphic card's DisplayPort.
4. Ensure the Link Box is powered on.

What's in the Box

VIVE Pro 2 Headset

All-in-one cable

Base Station 2.0 (x2)

Power adapter (x2)

Controller (2018) (x2)

Power adapter (x2)

Micro-USB cable (x2)

Link Box

Power adapter / Mini DP to DP adapter /

DisplayPort™ cable / USB 3.0 cable

With additional documentation and accessories.



Image: An overview of the VIVE Pro 2 components, including the headset, base stations, controllers, and the Link Box with its various connections.

3. Controller Pairing

Pair your VIVE controllers with the system for interactive experiences.

- In SteamVR, open the menu, select "Devices," and then "Pair Controller."
- To turn on a controller, press and hold the System button until you hear a beep and the status light turns blue.
- To pair, press and hold both the Menu and System buttons on the controller until the status light blinks blue and then turns green.



Image: Two VIVE wireless controllers, used for interaction within the virtual reality environment.

4. Wearing the Headset

Adjust the headset for comfort and clear visuals.

1. Flip open the earphones and loosen the top strap.
2. Loosen the headset band by turning the dial counter-clockwise.
3. Place the headset over your head and turn the dial clockwise until the headset band fits snugly.
4. Tighten the top strap and position the earphones over your ears for optimal audio.
5. Press and hold the lens adjustment button to slide the headset visor forward or backward to find a comfortable position.
6. Turn the IPD (Interpupillary Distance) knob until you achieve a clear display.
7. Mute or unmute the microphone from the right earphone. Adjust speaker volume from the left earphone.



Image: Side view of the HTC VIVE Pro 2 Headset, showing the integrated earphones and adjustable head strap.

OPERATING YOUR VIVE PRO 2

The VIVE Pro 2 is designed to deliver a high-fidelity virtual reality experience. Ensure your computer meets the minimum requirements for optimal performance.

Key Features and Usage

- **5K Clarity:** Experience sharp visuals with a combined 4896 x 2448 resolution. This high resolution brings out finer details in virtual environments.



Image: A visual depiction of the immersive 5K clarity offered by the VIVE Pro 2 headset, showing detailed virtual landscapes.

- **Wide 120-Degree Field of View (FOV):** The expanded FOV enhances immersion by aligning more naturally with human vision.



Wide field of view

[See more of your environment](#)

Expand your VR viewing experience with a wide 120° field of view (FOV) that better aligns with the human eyes, allowing you to see more naturally.



High refresh rate

[Experience seamless visuals](#)

Increase your visual comfort in graphics-intensive applications with a 120Hz refresh rate.



Hi-Res® certified audio

[Hear VR environments as intended](#)

Hi-Res certified headphones with 3D spatial sound integration and a powerful amplifier deliver immersive soundscapes for lasting impact.

Image: Icons illustrating key features: 5K resolution, 120-degree field of view, 120Hz refresh rate, and Hi-Res certified audio.

- **120Hz Refresh Rate:** Enjoy seamless visuals, especially in graphics-intensive games and applications, reducing motion sickness and enhancing fluidity.
- **Professional Ergonomics:** The balanced design and adjustability ensure comfort for extended VR sessions. The headset accommodates various head sizes and vision types, including glasses.



Professional ergonomics

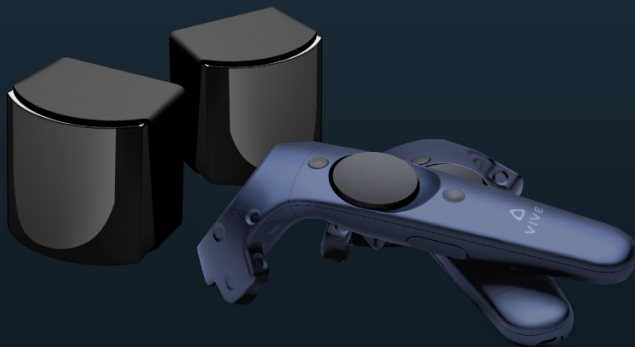
[Enjoy VR with hours on end comfort](#)

Industry-defining balanced construction and adjustability provides a comfortable fit for a wide range of head sizes, IPDs, and vision types, including glasses, for uninterrupted VR sessions of any length and purpose.



Image: The VIVE Pro 2 headset from a side angle, emphasizing its ergonomic design for comfortable wear.

- **SteamVR™ Tracking:** Utilize the base stations and controllers 2.0 for precise 360-degree coverage and occlusion-free experiences in spaces up to 5m x 5m (or 10m x 10m with 4 base stations).



SteamVR™ Tracking base stations & controllers 2.0

[Enjoy occlusion-free experiences](#)

Stay in the moment with precision tracking that provides 360° coverage of your movement to the millimeter. Use VIVE, seated, standing, or in vast multi-user-friendly space up to 5m x 5m, with supporting base stations.


Connect up to 4 SteamVR™ Base Station 2.0 units for maximum tracking area of 10m x 10m.

Image: VIVE Pro 2 controllers and base stations, illustrating the SteamVR Tracking system for comprehensive movement tracking.

Software Compatibility

The VIVE Pro 2 is compatible with a vast existing catalog of VR software, including Unreal Engine, Unity Software, Autodesk® VRED®, Mindesk, and more. It also provides access to the Offline SteamVR Library for secure installations without internet connectivity.


Software you need. Deployment that works.



Compatible Software

Tap into a vast existing catalog

Use your existing software like Unreal Engine, Unity Software, Autodesk® VRED®, Mindesk, and many more.



Offline SteamVR™ Library

Deploy with confidence

VIVE Pro 2 includes access to the Offline SteamVR Library, which allows installation in a secure environment where the machine is not connected to the internet.

Image: A graphic detailing the compatible software and the availability of an Offline SteamVR Library for the VIVE Pro 2.

MAINTENANCE

Regular maintenance helps prolong the life of your VIVE Pro 2 system.

- **Cleaning the Lenses:** Use a microfiber cloth specifically designed for optical lenses. Gently wipe the lenses in a circular motion from the center outwards. Do not use liquid cleaners or abrasive materials.
- **Cleaning the Headset and Controllers:** Wipe down the exterior surfaces with a soft, damp cloth. Avoid getting moisture into any openings.
- **Battery Care:** The system includes a Lithium Ion battery. For optimal battery life, avoid extreme temperatures and store the device with a partial charge if not used for extended periods.

TROUBLESHOOTING

Here are some common issues and their potential solutions:

Issue	Possible Cause	Solution
SteamVR crashes frequently.	Software conflicts, outdated drivers, or system resource limitations.	Ensure all VR-related drivers (graphics card, SteamVR) are up to date. Close unnecessary background applications. Verify game file integrity in Steam. Consider reinstalling SteamVR if issues persist.
Blurry vision, halos, or "screen door effect."	Incorrect IPD setting, headset not positioned correctly, or lens smudges.	Adjust the IPD knob until the image is clear. Ensure the headset is worn snugly and the visor is adjusted for optimal eye relief. Clean lenses with a suitable microfiber cloth.

Issue	Possible Cause	Solution
Tracking issues or sensors not working.	Improper base station placement, obstructions, or connection problems.	Verify base station placement (distance, height, angle) and ensure they have a clear line of sight to the play area. Check all cable connections to the Link Box and computer. Restart SteamVR and the system.
Controllers not pairing or unresponsive.	Low battery, pairing issue, or software glitch.	Ensure controllers are charged. Re-attempt the pairing process as described in the Setup Guide. Restart SteamVR.

SPECIFICATIONS

Detailed technical specifications for the HTC VIVE Pro 2 system:

Category	Specification
Headset Screen	Dual RGB low persistence LCD
Resolution	2448 x 2448 pixels per eye (4896 x 2448 pixels combined)
Field of View (FOV)	Up to 120 degrees
Refresh Rate	90/120 Hz
Audio	Hi-Res certified headphones (removable), High-impedance headphone support (via USB-C analog signal)
Ergonomics	Eye relief with lens distance adjustment, adjustable IPD 57-70mm, adjustable headphones, adjustable headstrap
Sensors	G-sensor, gyroscope, proximity, IPD sensor, SteamVR Tracking V2.0 (compatible with SteamVR 1.0 and 2.0 base stations)
Headset Connections	Bluetooth, USB-C port for peripherals
Controller Input	Multifunction trackpad, grip buttons, dual-stage trigger, system button, menu button
Controller Connections	Micro-USB charging port
Product Dimensions	20.9 x 13.6 x 7.3 inches
Item Weight	13 pounds
Batteries	1 Lithium Ion battery required (included)
Manufacturer	HTC America

Category	Specification
Release Date	October 29, 2021

Minimum Computer Requirements

Component	Requirement
Processor	Intel® Core™ i5-4590 or AMD Ryzen 1500 equivalent or greater
Graphics	NVIDIA® GeForce® GTX 1060 or AMD Radeon RX 480 equivalent or greater. NVIDIA® GeForce® RTX 20 Series (Turing) or AMD Radeon™ 5000 (Navi) generations or newer required for Full Resolution mode.
Memory	8 GB RAM or more
Operating System	Windows® 10
USB Ports	1x USB 3.0 or newer (USB 3.0 is also known as USB 3.2, Gen2)
Video Out	DisplayPort 1.2 or higher (DisplayPort 1.4 or higher with DSC required for Full Resolution mode)

[What's in the Box](#) [Specifications](#) [Requirements](#) [Components](#)

Computer Requirements

TRACKED AREA

Standing / Seated

No min. space requirements

Roomscale

Up to 10m x 10m using four SteamVR Base Station 2.0. The included two base stations support up to 5m x 5m.

MINIMUM REQUIREMENTS

Processor

Intel® Core™ i5-4590 or AMD Ryzen 1500 equivalent or greater

Graphics

NVIDIA® GeForce® GTX 1060 or AMD Radeon RX 480 equivalent or greater
GeForce® RTX 20 Series (Turing) or AMD Radeon™ 5000 (Navi) generations or newer required for Full Resolution mode

Memory

8 GB RAM or more

Operating System

Windows® 10

Video Out

DisplayPort 1.2 or higher
DisplayPort 1.4 or higher with DSC required for Full Resolution mode

USB Ports

1x USB 3.0 or newer
USB 3.0 is also known as USB 3.2 Gen2

Image: A table outlining the minimum computer specifications required to run the VIVE Pro 2 system effectively.

WARRANTY INFORMATION

Your HTC VIVE Pro 2 system comes with a manufacturer's warranty. For detailed terms and conditions, please refer to the official warranty document.



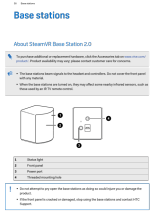


- **Standard Warranty:** Typically 12 months from the date of purchase.
- **Return Policy:** A 30-day return policy is generally offered for refunds or replacements.
- [Download Official Warranty Document \(PDF\)](#)

SUPPORT AND RESOURCES

For further assistance and resources, please use the following:

- [Download User Guide \(PDF\)](#)
- [Visit the Official HTC VIVE Store on Amazon](#)
- For technical support, driver downloads, and FAQs, please visit the official HTC VIVE support website.

Related Documents - VIVE Pro 2

 <p>htc VIVE FOCUS 3 User Guide</p>	<p>HTC VIVE Focus 3 User Guide: Setup, Features, and Operation</p> <p>Comprehensive user guide for the HTC VIVE Focus 3 VR headset, covering setup, features, troubleshooting, and advanced management options like MDM.</p>
 <p>htc VIVE XR ELITE User Guide</p>	<p>HTC VIVE XR Elite User Guide</p> <p>Comprehensive user guide for the HTC VIVE XR Elite virtual reality headset, covering setup, operation, features, and troubleshooting.</p>
 <p>Base stations About SteamVR Base Station 2.0</p>	<p>SteamVR Base Station 2.0 Setup and Usage Guide</p> <p>Comprehensive guide to setting up, using, and troubleshooting SteamVR Base Station 2.0 for an enhanced VR experience. Covers installation, configuration, compatibility, and maintenance.</p>
 <p>PROTOTYPE DEVELOPER EDITION WORK IN PROGRESS HTC VIVE DEVELOPER EDITION Setup guide version: 00000000-00</p>	<p>HTC VIVE Developer Edition Setup Guide</p> <p>Comprehensive setup guide for the HTC VIVE Developer Edition VR system, covering room preparation, hardware unpacking, installation, controller setup, and software configuration.</p>
 <p>htc VIVE XR ELITE User Guide</p>	<p>HTC VIVE XR Elite User Guide: Setup, Features, and Operation</p> <p>Comprehensive user guide for the HTC VIVE XR Elite VR headset. Learn about setup, hardware components, software features, troubleshooting, and business applications.</p>

htc

User Guide



HTC U23 pro

[HTC U23 pro User Guide: Comprehensive Smartphone Manual](#)

This official user guide for the HTC U23 pro smartphone provides comprehensive details on setup, features, camera capabilities, VIVERSE integration, battery management, security, and connectivity. Learn to optimize your device and explore HTC's ecosystem with this manual.