

ThrustMaster SF1000 Edition Formula Wheel Add-On, T300 Servo Base

Thrustmaster Ferrari SF1000 Edition Formula Wheel Add-On and T300 Servo Base User Manual

INTRODUCTION

This manual provides essential information for the setup, operation, maintenance, and troubleshooting of your Thrustmaster Ferrari SF1000 Edition Formula Wheel Add-On and T300 Servo Base. Please read this guide carefully before using the product to ensure optimal performance and longevity.



Image 1: The Thrustmaster Ferrari SF1000 Edition Formula Wheel Add-On attached to the T300 Servo Base. The wheel features a carbon fiber texture, a central display, and numerous buttons and rotary encoders. The servo base is black with red accents and the Thrustmaster logo.

SETUP

1. Attaching the Ferrari SF1000 Wheel to the T300 Servo Base

1. Align the quick-release mechanism of the Ferrari SF1000 wheel with the shaft of the T300 Servo Base.
2. Push the wheel firmly onto the shaft until it clicks into place.
3. Secure the wheel by tightening the locking screw located on the underside of the quick-release mechanism.



Image 2: A close-up view of the quick-release mechanism on the Thrustmaster Ferrari SF1000 wheel, showing the internal connection points for attaching to the servo base.

2. Connecting the T300 Servo Base

Connect the T300 Servo Base to your chosen platform (PlayStation, Xbox, or PC) using the provided USB cable. Ensure the power adapter is securely connected to the servo base and a power outlet.

- **PlayStation (PS4/PS5):** Set the mode switch on the servo base to 'PS4' or 'PS5' as appropriate. The system should automatically recognize the device.
- **Xbox (Series X/S, One):** The SF1000 wheel is compatible with Xbox consoles when paired with a compatible Thrustmaster servo base. Ensure the servo base is in the correct mode for Xbox.
- **PC (Windows):** Install the latest drivers from the official Thrustmaster website. Set the mode switch on the servo base to 'PC'.

OPERATING INSTRUCTIONS

Interactive Screen and Telemetry

The Ferrari SF1000 wheel features a clear, interactive screen that displays real-time telemetry data. This screen connects wirelessly to the servo base, providing crucial information during gameplay.



Image 3: A close-up of the interactive screen on the Ferrari SF1000 wheel, showing various telemetry data such as speed, gear, and pit limiter status, along with an 'OVERTAKE' indicator.

Buttons and Rotary Encoders

The wheel is equipped with numerous buttons and rotary encoders for precise control and customization during racing simulations.

- **Race Box:** Adjusts various in-game settings.
- **Grip:** Modifies tire grip settings.

- **Phase:** Controls engine braking or differential settings.
- **K1/K2:** Customizable buttons for various functions.
- **S1/S2:** Additional customizable buttons.
- **N (Neutral) / P (Pit Limiter):** Dedicated buttons for neutral gear and pit lane speed limiter.



Image 4: The left side of the Ferrari SF1000 wheel, highlighting the 'N' (Neutral) button, 'DRINK' and 'RADIO' buttons, and a multi-position switch.



Image 5: The right side of the Ferrari SF1000 wheel, showing the 'P' (Pit Limiter) button and rotary encoders for incremental adjustments (+1, -10).

Paddle Shifters

The wheel features responsive paddle shifters for quick gear changes, enhancing the immersive racing experience.



Image 6: A close-up of the metallic paddle shifters on the Ferrari SF1000 wheel, designed for quick and precise gear changes.

Force Feedback

The T300 Servo Base provides realistic and ultra-responsive Force Feedback effects thanks to its industrial-class brushless servomotor and dual-belt, friction-free mechanism. This technology delivers smooth and seamless action with no latency, simulating road textures, loss of grip, braking, and impacts.

MAINTENANCE

- **Cleaning:** Use a soft, dry cloth to clean the wheel and servo base. Avoid abrasive cleaners or solvents.
- **Storage:** Store the unit in a dry, dust-free environment when not in use.
- **Cable Management:** Ensure all cables are neatly organized and not under tension to prevent damage.

TROUBLESHOOTING

- **No Power:** Check all power connections. Ensure the power adapter is securely plugged into the servo base and a working electrical outlet.
- **No Force Feedback:** Verify that the drivers are correctly installed (for PC) and that Force Feedback is enabled in your game settings. Ensure the servo base is in the correct mode for your platform.
- **Connectivity Issues:** Try connecting the USB cable to a different port on your console or PC. For PC, ensure the latest drivers are installed.
- **Wheel Not Recognized:** Ensure the mode switch on the T300 Servo Base is set to the correct platform (PS4/PS5/PC). Restart your console or PC.

For further assistance, please refer to the official Thrustmaster support website.

SPECIFICATIONS

Feature	Description
Wheel Model	Ferrari SF1000 Edition Formula Wheel Add-On
Servo Base Model	T300 Servo Base
Motor Type	Industrial-class brushless servomotor
Force Feedback	Super smooth and seamless, ultra-responsive, realistic effects
Mechanism	Dual-belt, friction-free optimized mechanism
Technology	H.E.A.R.T (HallEffect AccuRate Technology)
Rotation Angle	Adjustable up to 1080 degrees
Interactive Screen	Clear, precise, wireless connectivity with high bandwidth telemetry
Compatibility	PlayStation 4, PlayStation 5, Xbox Series X/S, Xbox One, Windows PC

WARRANTY INFORMATION

This product is covered by a manufacturer's warranty. Please refer to the warranty card included with your product or visit the official Thrustmaster website for detailed terms and conditions regarding warranty coverage and claims.





CUSTOMER SUPPORT

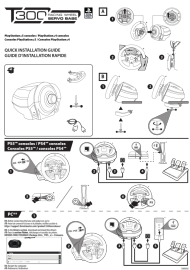
For technical support, driver updates, or additional product information, please visit the official Thrustmaster support website. You can find FAQs, troubleshooting guides, and contact information for customer service.

Website: support.thrustmaster.com

© 2023 Thrustmaster. All rights reserved.

Related Documents - SF1000 Edition Formula Wheel Add-On, T300 Servo Base

	<p>Thrustmaster Formula Wheel Add-On Ferrari SF1000 Edition User Manual</p> <p>User manual for the Thrustmaster Formula Wheel Add-On Ferrari SF1000 Edition, detailing installation, firmware updates, and button mapping for PC, PlayStation, and Xbox platforms.</p>
	<p>Thrustmaster Formula Wheel Add-On Ferrari SF1000 Edition User Manual and Guide</p> <p>Comprehensive user manual and installation guide for the Thrustmaster Formula Wheel Add-On Ferrari SF1000 Edition. Learn about setup, firmware updates, button mapping for PC, PlayStation, Xbox, and screen management.</p>
	<p>Thrustmaster Ferrari SF1000 Edition Formula Wheel Add-On Button Mapping Guide</p> <p>Comprehensive button mapping guide for the Thrustmaster Ferrari SF1000 Edition Formula Wheel Add-On, covering Xbox, PC, and PlayStation platforms with detailed control layouts and functions.</p>
	<p>Thrustmaster T300 Series Racing Wheel: Auto-Calibration and Centering Guide</p> <p>Learn how to auto-calibrate and center your Thrustmaster T300 series racing wheel for optimal performance on PC, PS4, and PS5. This guide provides step-by-step instructions to ensure your wheel is perfectly aligned.</p>



[Thrustmaster T300 Servo Base: Quick Installation Guide](#)

Concise guide for installing the Thrustmaster T300 Servo Base racing wheel on PlayStation consoles and PC, including driver download links and important safety information.



[Verifying Thrustmaster T300 RS and Ferrari GTE Installation on PC](#)

A guide to verifying the correct installation of Thrustmaster T300 RS and T300 Ferrari GTE racing wheels on a PC. This document covers checking Device Manager and Windows Game Controller settings, and accessing the product's control panel for configuration.