

Manuals+

[Q & A](#) | [Deep Search](#) | [Upload](#)

Manuals.plus /

› [LANDSIN](#) /

› LANDSIN Battery Disconnect Switch 12-48V 600A User Manual

LANDSIN Battery Switch 12-48 V 600A

LANDSIN Battery Disconnect Switch 12-48V 600A User Manual

Model: Battery Switch 12-48 V 600A



1. INTRODUCTION

This manual provides detailed instructions for the installation, operation, and maintenance of the LANDSIN 12-48V 600A High Current Battery Disconnect Switch. This device is designed to isolate batteries in various vehicles and marine applications, preventing battery depletion when the vehicle or vessel is not in use.

Key Features:

- Designed for DC 12-48V systems.
- 600A continuous current rating, 2500A instantaneous.
- Heavy-duty ABS plastic housing with tin-plated brass screws.
- Flame-retardant nylon shell for enhanced safety.
- Suitable for RVs, ATVs, UTVs, boats, ships, yachts, and trucks.

2. PRODUCT OVERVIEW

The LANDSIN Battery Disconnect Switch is a robust unit designed for reliable power isolation. It features a simple ON/OFF rotary knob for easy operation.



Figure 2.1: Front view of the LANDSIN Battery Disconnect Switch, showing the red rotary knob, ON/OFF indicators, and included mounting bolts.

The switch is constructed with a heavy-duty ABS plastic shell and tin-plated brass screws for corrosion resistance. The flame-retardant nylon shell provides protection against leakage and high temperatures.

Back Cover Adopts Terminal Insulation Protection

Excellent safety performance

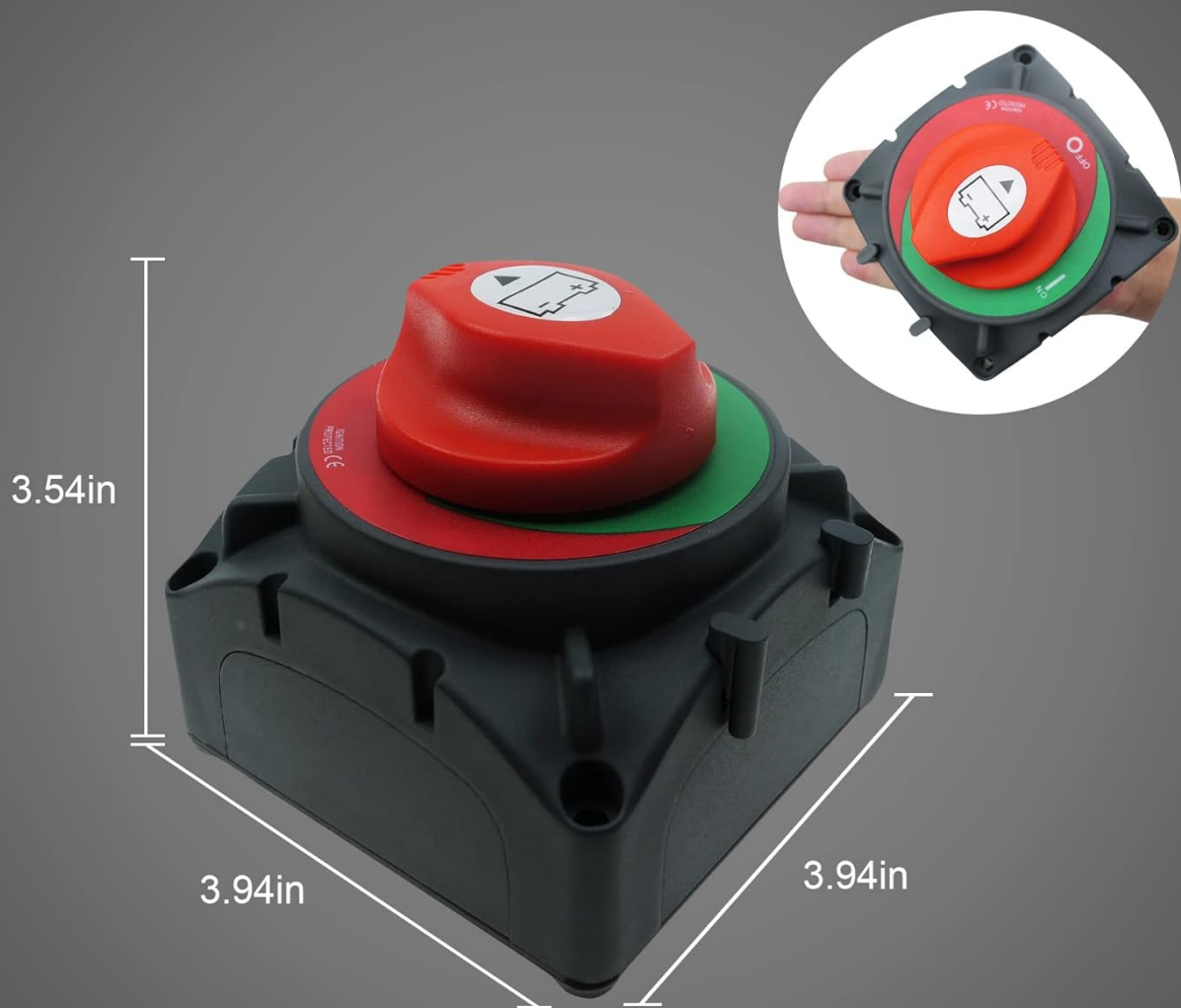


Figure 2.2: Dimensional view of the battery disconnect switch, indicating approximate measurements of 3.94 inches (width) x 3.94 inches (depth) x 3.54 inches (height).

3. SAFETY INFORMATION

Always observe the following safety precautions when installing or operating the battery disconnect switch:

- Disconnect the battery's negative terminal before beginning any electrical work.
- Wear appropriate personal protective equipment, including safety glasses and gloves.
- Ensure all connections are secure and properly insulated to prevent short circuits.
- Do not exceed the specified voltage (12-48V DC) or current ratings (600A continuous, 2500A instantaneous).
- Keep the switch away from flammable materials.
- Consult a qualified technician if you are unsure about any installation steps.

4. SETUP AND INSTALLATION

The LANDSIN Battery Disconnect Switch is designed for straightforward installation. It features four detachable side

panels for flexible mounting options.

4.1 Mounting the Switch

1. Choose a suitable, dry, and accessible location for mounting the switch.
2. Remove the four detachable side panels if required for your mounting configuration.
3. Secure the switch using appropriate fasteners (bolts included) through the designated mounting holes. Ensure the switch is firmly attached to a stable surface.



Figure 4.1: Rear view of the switch, highlighting the terminal insulation protection and the heavy-duty ABS plastic housing.

4.2 Wiring Connections

The switch is equipped with two large screw terminals for connecting battery cables.

1. Ensure the battery is disconnected before making any connections.
2. Connect the positive cable from the battery to one terminal of the switch.
3. Connect the positive cable leading to your vehicle's or vessel's electrical system to the other terminal of the switch.

4. Ensure all connections are tight and secure.
5. Verify that the wiring is appropriate for the 12-48V DC system and 600A current rating.



Figure 4.2: Internal view showing the robust screw terminals for secure cable connections.

5. OPERATING INSTRUCTIONS

The LANDSIN Battery Disconnect Switch operates with a simple ON/OFF rotary mechanism.

1. **To Turn ON:** Rotate the red knob clockwise until it clicks into the "ON" position. This connects the battery to the electrical system.
2. **To Turn OFF:** Rotate the red knob counter-clockwise until it clicks into the "OFF" position. This isolates the battery from the electrical system, preventing power drain.

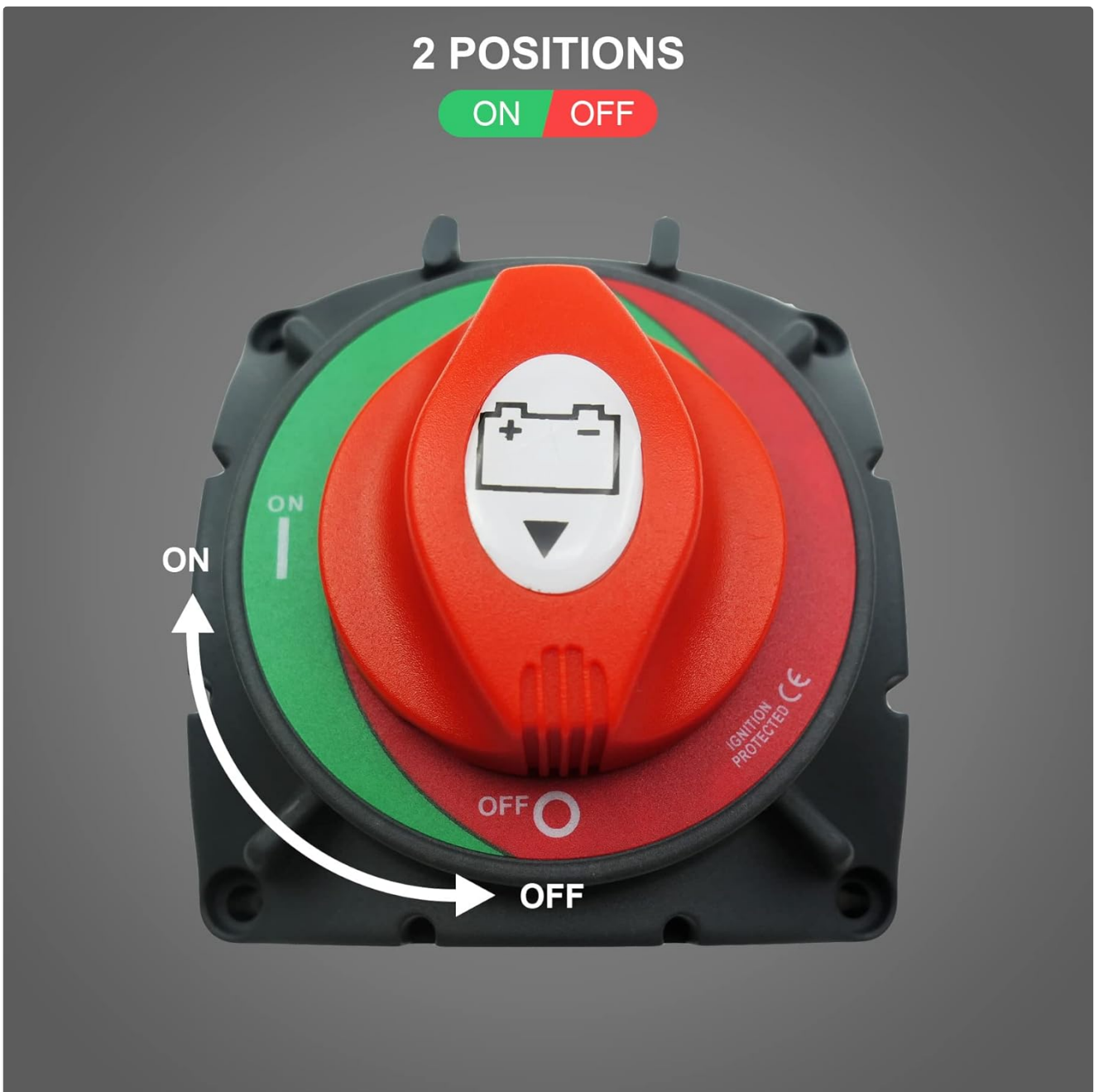


Figure 5.1: Illustration of the two operating positions: ON (green indicator) and OFF (red indicator).

The switch can be used independently or locked together with other switches for more complex electrical systems.

6. MAINTENANCE

Regular maintenance ensures optimal performance and longevity of your battery disconnect switch.

- **Periodic Inspection:** Annually inspect the switch for any signs of physical damage, corrosion, or loose connections.
- **Cleaning:** Keep the switch clean and free from dirt, dust, and moisture. Use a dry cloth for cleaning. Avoid using harsh chemicals.
- **Terminal Check:** Periodically check the tightness of the terminal connections to ensure good electrical contact. Loose connections can lead to overheating and power loss.
- **Environmental Protection:** While the switch is heavy-duty, protecting it from extreme environmental conditions (e.g., prolonged direct water exposure, excessive vibration) will extend its lifespan.

7. TROUBLESHOOTING

If you encounter issues with your LANDSIN Battery Disconnect Switch, consider the following troubleshooting steps:

- **No Power When ON:**

- Verify the switch is fully in the "ON" position.
- Check all cable connections for tightness and corrosion.
- Inspect the battery for charge and proper function.
- Ensure the main circuit breaker or fuse (if present) is not tripped.

- **Switch Difficult to Turn:**

- Ensure there is no obstruction around the rotary knob.
- Do not force the switch; if it remains stiff, inspect for internal damage or debris.

- **Overheating:**

- Immediately turn off the switch.
- Check for loose or corroded connections, which can cause resistance and heat.
- Ensure the current draw does not exceed the switch's continuous rating.

If problems persist after performing these checks, contact customer support.

8. SPECIFICATIONS

Feature	Specification
Brand	LANDSIN
Model Number	Battery Switch 12-48 V 600A
Operation Mode	ON-OFF
Current Rating	600 Amps (Continuous), 2500 Amps (Instantaneous)
Operating Voltage	12-48 Volts DC
Contact Type	Normally Closed
Connector Type	Screw
Terminal Type	Screw
Circuit Type	2-way
Actuator Type	Hinge Lever (Rotary Knob)
Product Dimensions (L x W x H)	4.41 x 4.33 x 3.86 inches (approx. 11.2 x 11 x 9.8 cm)
Weight	3.53 ounces (approx. 100 grams)
Material	Heavy-duty ABS plastic shell, tin-plated brass screws, flame-retardant nylon shell

9. CUSTOMER SUPPORT

For any questions, concerns, or support regarding your LANDSIN Battery Disconnect Switch, please contact us directly. We are committed to providing assistance and will respond to inquiries within 12 hours.

Please refer to your purchase documentation or the seller's contact information for specific support channels.

