

Manuals+

[Q & A](#) | [Deep Search](#) | [Upload](#)

manuals.plus /

- › **Raypak** /
- › **Raypak B-R266A-EN-X 266K BTU Natural Gas Pool Heater User Manual**

Raypak B-R266A-EN-X

Raypak B-R266A-EN-X 266K BTU Natural Gas Pool Heater User Manual

Model: B-R266A-EN-X | Part Number: 017400

1. PRODUCT OVERVIEW

The Raypak B-R266A-EN-X is a 266,000 BTU natural gas pool heater designed for commercial and residential pool and spa applications. This unit incorporates a digital display for precise temperature control and an electronic ignition system for reliable startup. Its cupro-nickel fin tube heat exchanger ensures efficient heat transfer, while the corrosion-resistant galvanized metal cabinet provides durability. The heater is ASME rated and suitable for installations at elevations between 0 and 2000 feet.



Image: A front-side view of the Raypak B-R266A-EN-X natural gas pool heater. The unit features a dark gray front panel with the red 'Raypak' logo, and lighter gray side panels. A digital display and control panel are visible at the top front. On the right side, water inlet/outlet connections with a pressure gauge are visible.

2. SAFETY INFORMATION

Important: Read and understand all instructions in the complete installation and operation manual before installing, operating, or servicing this product. Failure to follow these instructions can result in property damage, personal injury, or death.

- Installation and service must be performed by a qualified installer, service agency, or gas supplier.
- Ensure proper ventilation to prevent carbon monoxide accumulation.
- Do not store or use gasoline or other flammable vapors and liquids in the vicinity of this or any other appliance.

- Maintain proper water chemistry in your pool or spa to prevent damage to the heater and ensure safe operation.
- Keep the area around the heater clear of combustible materials, debris, and obstructions.

3. SETUP AND INSTALLATION

The installation of the Raypak B-R266A-EN-X pool heater requires specialized knowledge and adherence to local codes and regulations. It is mandatory that installation be performed by a qualified and licensed professional.

Key Installation Considerations:

- **Location:** Choose a location that provides adequate clearance for ventilation, service, and protection from environmental elements.
- **Gas Supply:** Ensure the gas supply line is correctly sized and installed according to local codes and manufacturer specifications.
- **Water Connections:** Proper plumbing connections are essential for water flow and heater efficiency.
- **Electrical Connections:** All electrical wiring must comply with local codes and be performed by a licensed electrician.
- **Venting:** Correct venting is critical for safe operation and exhaust of combustion byproducts.
- **Elevation:** This heater is rated for elevations from 0 to 2000 feet. Consult the full manual for specific adjustments if installing at higher altitudes.

4. OPERATING INSTRUCTIONS

Once properly installed and commissioned by a professional, operating your Raypak B-R266A-EN-X heater is straightforward.

Basic Operation:

1. **Power On:** Ensure the main power switch to the heater is in the 'ON' position.
2. **Set Desired Temperature:** Use the digital display and control buttons to set your desired pool or spa water temperature. Refer to the full manual for specific button functions.
3. **Electronic Ignition:** The heater will automatically initiate its electronic ignition sequence when a call for heat is detected and all safety parameters are met.
4. **Monitoring:** Observe the digital display for current water temperature and any operational messages or error codes.
5. **Power Off:** To turn off the heater, either lower the set temperature below the current water temperature or turn off the main power switch.

For detailed instructions on advanced settings, error code interpretation, and troubleshooting during operation, consult the comprehensive owner's manual.

5. MAINTENANCE

Regular maintenance ensures the longevity and efficient operation of your Raypak pool heater. Some tasks can be performed by the owner, while others require a qualified service technician.

Owner Maintenance:

- **Visual Inspection:** Periodically check the heater's exterior for any signs of damage, corrosion, or obstructions around the air intake and exhaust.
- **Clearance:** Ensure the area around the heater remains clear of leaves, debris, and other materials that could block airflow.
- **Water Chemistry:** Regularly test and maintain proper pool/spa water chemistry (pH, alkalinity, sanitizer levels) to prevent scale buildup and corrosion within the heater.

Professional Maintenance (Recommended Annually):

- **Burner and Heat Exchanger Cleaning:** A technician can inspect and clean the burner assembly and heat exchanger to ensure optimal combustion and heat transfer.
- **Gas Pressure Check:** Verification of correct gas pressure for efficient and safe operation.
- **Electrical System Check:** Inspection of wiring, connections, and safety controls.
- **Water Flow Inspection:** Ensuring proper water flow through the heater.
- **Winterization:** If applicable, proper winterization procedures should be performed by a professional to prevent freeze damage.

6. TROUBLESHOOTING

This section provides basic troubleshooting steps for common issues. For complex problems or if you are unsure, always contact a qualified service technician.

Common Issues and Solutions:

- **Heater Not Turning On:**
 - Check if the main power switch is ON.
 - Verify the gas supply valve is open.
 - Ensure the pool pump is running and there is adequate water flow.
 - Check for any tripped circuit breakers.
- **No Heat or Insufficient Heat:**
 - Confirm the set temperature is higher than the current water temperature.
 - Check for proper water flow through the heater. Low flow can prevent heating.
 - Inspect for any error codes on the digital display.
- **Error Codes Displayed:**
 - Refer to the full owner's manual for a complete list of error codes and their meanings.
 - Many error codes indicate specific issues that may require professional diagnosis and repair.

If basic troubleshooting does not resolve the issue, or if you encounter any unusual odors, sounds, or visible damage, immediately turn off the heater and contact a qualified service technician.

7. SPECIFICATIONS

Detailed technical specifications for the Raypak B-R266A-EN-X pool heater:

Feature	Specification
Model Number	B-R266A-EN-X
Part Number	017400
BTU Output	266,000 BTU
Fuel Type	Natural Gas
Heat Exchanger Material	Cupro Nickel
ASME Rated	Yes (for commercial swimming pools and spas)
Elevation Rating	0 - 2000 ft
Ignition Type	Electronic Ignition
Product Dimensions (L x W x H)	44.5 x 30.5 x 28 inches
Item Weight	235 pounds
Manufacturer	RAYPAK


8. WARRANTY AND SUPPORT






This Raypak product is covered by a manufacturer's warranty. Specific warranty terms and conditions, including duration and coverage details, are provided with the product documentation. Please retain your proof of purchase for warranty claims.

For technical assistance, warranty service, or to locate an authorized service center, please contact Raypak customer support directly. Always provide your model number (B-R266A-EN-X) and part number (017400) when seeking support.

© 2023 Raypak. All rights reserved. This manual is for informational purposes only.

Related Documents - B-R266A-EN-X

	<p>Raypak Pool Heater Limited Warranty</p> <p>This document outlines the limited warranty provided by Raypak, Inc. for their pool and spa heaters. It details the scope of the warranty, applicable warranty periods for various models, conditions and exclusions, and the process for making a warranty claim. The warranty covers defects in materials and workmanship under normal use and service.</p>
---	---

 <p>INSTALLATION AND OPERATION MANUAL</p> <p>Gas-Fired Pool and Spa Heater</p> <p>Brass ASME and Polymer Atmospheric Heat Exchanger Models 206A, 266, 266A, 336A, 399, and 406A</p>	<p>Raypak Gas-Fired Pool and Spa Heater Installation and Operation Manual</p> <p>Comprehensive guide for installing, operating, and maintaining Raypak gas-fired pool and spa heaters (models 206A, 266, 266A, 336A, 399, 406A). Covers safety, water chemistry, installation, operation, and troubleshooting.</p>
 <p>INSTALLATION & OPERATION MANUAL</p> <p>AVIA</p> <p>Gas-Fired Pool and Spa Heater</p> <p>Models 264 and 404</p>	<p>Raypak AVIA Gas-Fired Pool and Spa Heater Installation & Operation Manual (Models 264, 404)</p> <p>Comprehensive installation and operation manual for the Raypak AVIA gas-fired pool and spa heater, covering models 264 and 404. Includes safety warnings, installation guidelines, operating procedures, maintenance, and troubleshooting.</p>
 <p>INSTALLATION AND OPERATION MANUAL</p> <p>AVIA</p> <p>Gas-Fired Pool and Spa Heater</p> <p>Models 264 and 404</p>	<p>Raypak AVIA Gas-Fired Pool and Spa Heater Installation and Operation Manual (Models 264 & 404)</p> <p>Comprehensive installation and operation manual for the Raypak AVIA Gas-Fired Pool and Spa Heater, models 264 and 404. Covers safety, installation, operation, maintenance, and troubleshooting.</p>
 <p>INSTALLATION & OPERATION MANUAL</p> <p>AVIA</p> <p>Gas-Fired Pool and Spa Heater</p> <p>Models 264 and 404</p>	<p>AVIA Gas-Fired Pool and Spa Heater Installation & Operation Manual</p> <p>This manual provides comprehensive installation, operation, and maintenance instructions for the AVIA Gas-Fired Pool and Spa Heater, Models 264 and 404. It includes safety warnings, installation procedures, operational guidance, troubleshooting tips, and specifications for optimal performance and safety.</p>
 <p>INSTALLATION AND OPERATION MANUAL</p> <p>AVIA</p> <p>Gas-Fired Pool and Spa Heater</p> <p>Models 264 and 404</p>	<p>Raypak AVIA Gas-Fired Pool and Spa Heater Installation and Operation Manual (Models 264, 404)</p> <p>Comprehensive installation and operation manual for Raypak AVIA gas-fired pool and spa heaters, models 264 and 404. Covers installation, operation, maintenance, troubleshooting, and safety guidelines.</p>

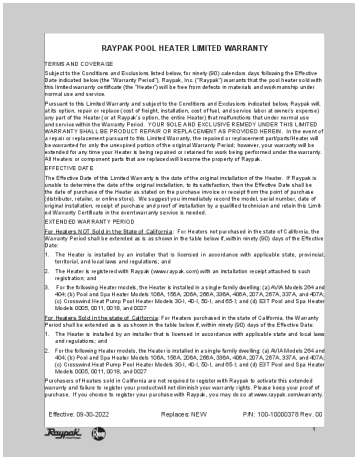
[pdf] Warranty

Mar Salvi WarrantyRaypak 206 BTU Digital Ignition Natural Gas ASME Heater with Bronze Headers and Copper Tubing 1999 ft 017371 EZ Pool SpaRAY 15 0259 wtyeztestpools content RAY wty
WarrantyWarrantyRaypak SpaRaypak 266K B R266A EN X Commercial — Vita SupplyRAY wtyRAY
0292 wtypoolimages blob core windows net insite Product Documents RA Y ||| ||| RAYPAK POOL
HEATER LIMITED WARRANTY TERMS AND COVERAGE Subject to the Conditions and Exclusions
listed below, for ninety 90 calendars days following the Effective Date indicated below the Warranty

Period , Raypak, Inc. Raypak warrants that

RAYPAK POOL HEATER LIMITED WARRANTY TERMS AND COVERAGE Subject
to the Conditions and Exclusions listed below, for ninety 90 calendars days following
the Effective Date indicated below the Warranty Period , Raypak, Inc. Raypak
warrants that the pool heater sold with this limited warranty cer...

lang:en score:21 filesize: 487.65 K page_count: 11 document date: 2022-10-31



[pdf] Specifications Declaration of Conformity

RP P 902 6 REV B Effective 02 01 24 Replaces 05 21 23 Unilog Scroll compressor digital thermostat Ti
heat exchanger small cabinet R4450ti E 80 000 TWPH 4450EHT08 300 heat Raypak 009193

Specification Sheet assets unilogcorp 267 ITEM DOC |||

RP-P-902-6 REV B Effective 02-01-24 Replaces 05-21-23 TABLE OF CONTENTS
SECTION 1 SECTION 2 ... 9 16 10-5/8 249 19 12-1/8 268 21 MODEL B-R206A-EN-X
#50 B-R206A-EN-X #51 B-R206A-EN-X #52 **B-R266A-EN-X** #50 **B-R266A-EN-X** #51
B-R266A-EN-X #52 B-R336A-EN-X #50 B-R336A-EN-X #51 B-R336A-EN-X #5...

lang:i-klngon score:20 filesize: 4.37 M page_count: 37 document date: 2024-02-28

[\[pdf\]](#) User Manual Instructions

241236 MANUAL I O ATMOSPHERIC 206A 406A S Linder Raypak Inc RAY 15 9277 ig

InstallGuidePOOL360 266A Digital Liquid Propane ASME Pool and Spa Heater 266K BTUpoolimages

azureedge net insite Product Documents RA Y InstallGuideRAY 0243 BTUPOOL360 Millivolt Plus 57

2KRAY igpoolimages 9856 2KPOOL360 336A Natural Gas Cast Iron 332K BTU 6 9KRAY igRAY

Installation Operation ManualRAY InstallGuideRheem 266 000 9KRheem Fired spa heater installation

operation manual 206a 406aRAY ignationaldiscountpoolsupplies content Manuals rheem raypak Rheem

406apoolimages InstallGuideOperational ManualRheem 9KRaypak Brass Copper 017372 EZ

SupplyRheem igstore 2481b mybigcommerce ManualOps ManRheem SupplyRaypak B R266A EN X

Commercial — Vita 0292 opsnationaldiscountpoolsupplies 241236poolimages blob core windows ops |||

||| INSTALLATION AND OPERATION MANUAL Gas-Fired Pool and Spa Heater Bronze ASME and

Polymer Atmospheric Heat Exchanger Models 206A, 266, 266A, 336A, 399, and 406A THIS MANUAL

CAN BE VIEWED ELECTRONICALLY USING YOUR SMART DEVICE. SEE PAGE 46 FOR |||

INSTALLATION AND OPERATION MANUAL Gas-Fired Pool and Spa Heater Bronze ASME and

Polymer Atmospheric Heat Exchanger Models 206A, 266, 266A, 336A, 399, and 406A THIS MANUAL

CAN BE VIEWED ELECTRONICALLY USING YOUR SMART DEVICE. SEE PAGE 46 FOR |||

INSTALLATION AND OPERATION MANUAL Gas-Fired Pool and Spa Heater Bronze ASME and

Polymer Atmospheric Heat Exchanger Models 206A, 266, 266A, 336A, 399, and 406A THIS MANUAL

CAN BE VIEWED ELECTRONICALLY USING YOUR SMART DEVICE. SEE PAGE 46 FOR |||

INSTALLATION AND OPERATION MANUAL Gas-Fired Pool and Spa Heater Bronze ASME and

Polymer Atmospheric Heat Exchanger Models 206A, 266, 266A, 336A, 399, and 406A THIS MANUAL

CAN BE VIEWED ELECTRONICALLY USING YOUR SMART DEVICE. SEE PAGE 46 FOR |||

INSTALLATION AND OPERATION MANUAL Gas-Fired Pool and Spa Heater Bronze ASME and

Polymer Atmospheric Heat Exchanger Models 206A, 266, 266A, 336A, 399, and 406A THIS MANUAL

CAN BE VIEWED ELECTRONICALLY USING YOUR SMART DEVICE. SEE PAGE 46 FOR

INSTALLATION AND OPERATION MANUAL Gas-Fired Pool and Spa Heater Bronze

ASME and Polymer Atmospheric Heat Exchanger Models 206A, 266, 266A, 336A,

399, and 406A THIS MANUAL CAN BE VIEWED ELECTRONICALLY USING YOUR

SMART DEVICE. SEE PAGE 46 FOR QR CODE. ASME HLW BR models only

AWARNING: If the info...

lang:en score:18 filesize: 10.2 M page_count: 53 document date: 2022-09-01



[\[pdf\]](#) User Manual Installation Guide Instructions

241236 MANUAL I O ATMOSPHERIC 206A 406A S Linder Raypak Inc Product Manual Installation GuideRaypak P R206A EP C 57 Digital Propane Gas Heater Electronic Ignitio PoolzillaRAY009224 And Operation Manualcdn shopify s files 1 0016 3453 3422 RAY009224 v 1746458217 PoolzillaRaypak B R266A EN X Natural 50 ASME Cupro Nickel Commercial Pool ManualRAY017400 1746458217cdn RAY017400 1746196453 GuideProduct ManualRAY009224 R336A MN 332 5K BTU Millivolt Plus ManualRAY009194 1746196453cdn RAY009194 1753109295 R406A 014953 ManualRAY014953 RAY014953 1746207078cdn ||| ||| INSTALLATION AND OPERATION MANUAL Gas-Fired Pool and Spa Heater Bronze ASME and Polymer Atmospheric Heat Exchanger Models 206A, 266, 266A, 336A, 399, and 406A THIS MANUAL CAN BE VIEWED ELECTRONICALLY USING YOUR SMART DEVICE. SEE PAGE 46 FOR ||| INSTALLATION AND OPERATION MANUAL Gas-Fired Pool and Spa Heater Bronze ASME and Polymer Atmospheric Heat Exchanger Models 206A, 266, 266A, 336A, 399, and 406A THIS MANUAL CAN BE VIEWED ELECTRONICALLY USING YOUR SMART DEVICE. SEE PAGE 46 FOR ||| INSTALLATION AND OPERATION MANUAL Gas-Fired Pool and Spa Heater Bronze ASME and Polymer Atmospheric Heat Exchanger Models 206A, 266, 266A, 336A, 399, and 406A THIS MANUAL CAN BE VIEWED ELECTRONICALLY USING YOUR SMART DEVICE. SEE PAGE 46 FOR QR CODE. ASME HLW BR models only AWARNING: If the info...

lang:en score:18 filesize: 10.09 M page_count: 53 document date: 2023-02-28



[\[pdf\]](#) Parts List Catalog

2021 RESIDENTIAL POOL SPA PRODUCT CATALOG Residential pool spa R Raypak Designation with built in stackless top HEAT PUMP DIGITAL 6450ti E PD HC 8450ti 23 Pool Catalog conelyco DOCUMENTS Catalogs 2021 RESIDENTIAL POOL SPA PRODUCT CATALOG PD6000.1 Rev A Effective 01-01-21 Replaces 04-01-20 2 ... -1/8 268 21 Dimensions are in inches. MODEL B-R206A-EN-X #50 B-R206A-EN-X #51 B-R206A-EN-X #52 **B-R266A-EN-X #50 B-R266A-EN-X #51 B-R266A-EN-X #52** B-R336A-EN-X #50 B-R336A-EN-X #51 B-R336A-EN-X #5...

lang:i-klingson score:16 filesize: 46.85 M page_count: 195 document date: 2020-12-28



[\[pdf\]](#) Catalog

POOL SPA RP P 903 6 eztestpools content ||| COMMERCIAL POOL SPA PRODUCT CATALOG RP-P-903-6 REV A Effective 05-01-23 Replaces PD6000.2 Rev C ... 9 16 10-5/8 249 19 12-1/8 268 21 MODEL B-R206A-EN-X #50 B-R206A-EN-X #51 B-R206A-EN-X #52 **B-R266A-EN-X #50 B-R266A-EN-X #51 B-R266A-EN-X #52** B-R336A-EN-X #50 B-R336A-EN-X #51 B-R336A-EN-X #5...

lang:i-klingson score:12 filesize: 3.78 M page_count: 44 document date: 2023-05-25