

AURAXY B09F62W75T

AURAXY Motion Sensor Outdoor Lights Instruction Manual

Model: B09F62W75T

INTRODUCTION

Thank you for choosing the AURAXY Motion Sensor Outdoor Lights. This manual provides essential information for the proper installation, operation, and maintenance of your solar-powered wall lights. Please read these instructions carefully before use to ensure optimal performance and longevity of your product.

SAFETY INFORMATION

- Ensure the installation location receives sufficient direct sunlight for optimal charging.
- Do not disassemble, repair, or modify the product yourself. Contact customer support for assistance.
- Keep the product away from fire and high temperatures.
- Dispose of batteries according to local regulations. Do not incinerate.
- This product is IP44 waterproof, suitable for outdoor use, but avoid submerging it in water.

PRODUCT OVERVIEW AND COMPONENTS

The AURAXY Motion Sensor Outdoor Light features a solar panel, LED lights with an optical lens, and a PIR motion sensor. Each package includes the following:

- AURAXY Motion Sensor Outdoor Light unit (2 units for 2-pack)
- Installation kit (screws, wall anchors)
- Double-sided tape



Image: Front view of the AURAXY Motion Sensor Outdoor Light installed on a wall, showing the solar panel and downward-facing light. A small icon indicates motion detection.

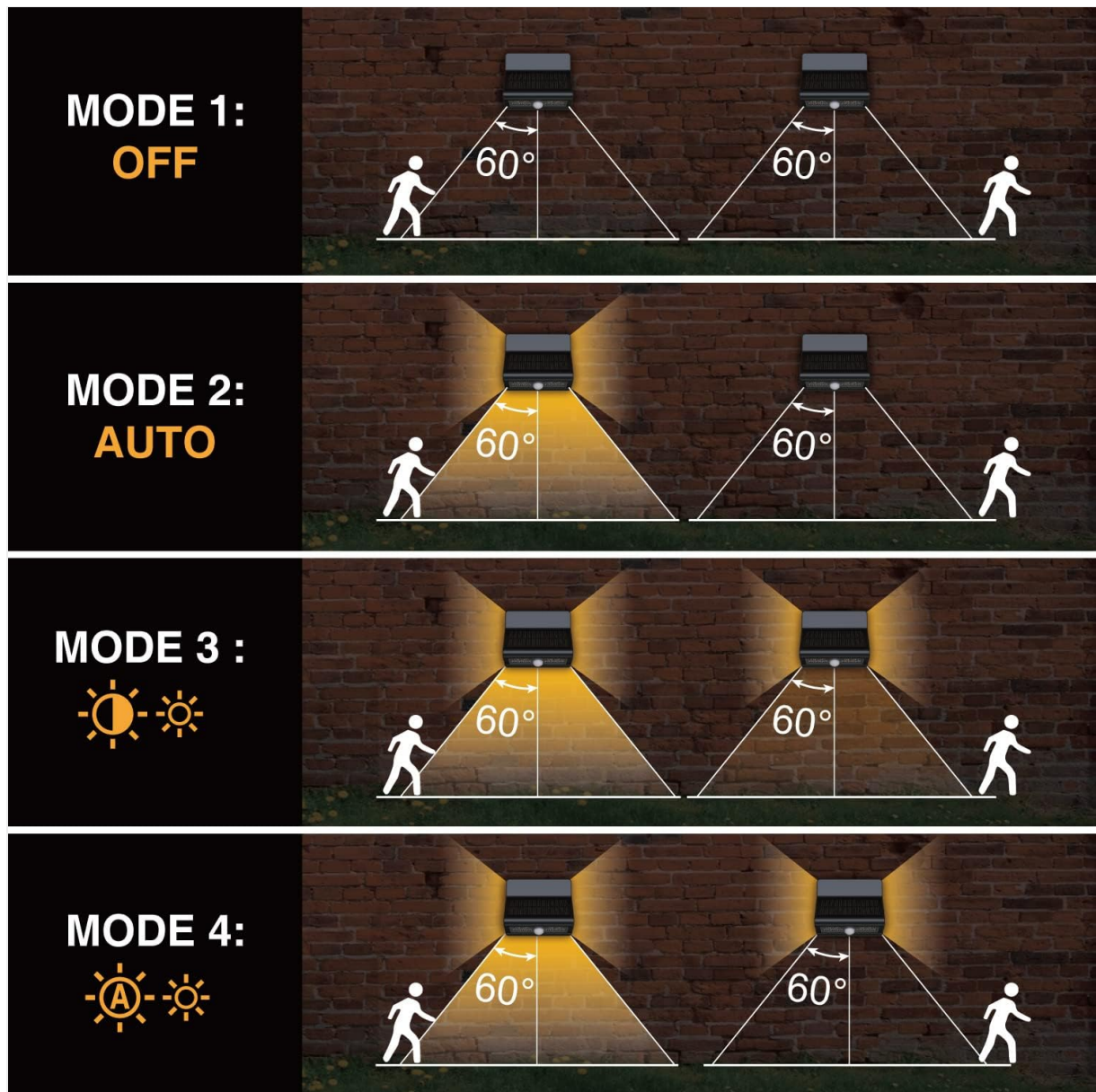


Image: Diagram illustrating the optical lens design of the AURAXY light compared to standard lights. The AURAXY lens directs light downwards, preventing glare.

SETUP AND INSTALLATION

1. Initial Charging

Before first use, place the solar lights in direct sunlight for at least 6-8 hours to ensure the internal battery is fully charged. The light will automatically charge during the day and activate at night.

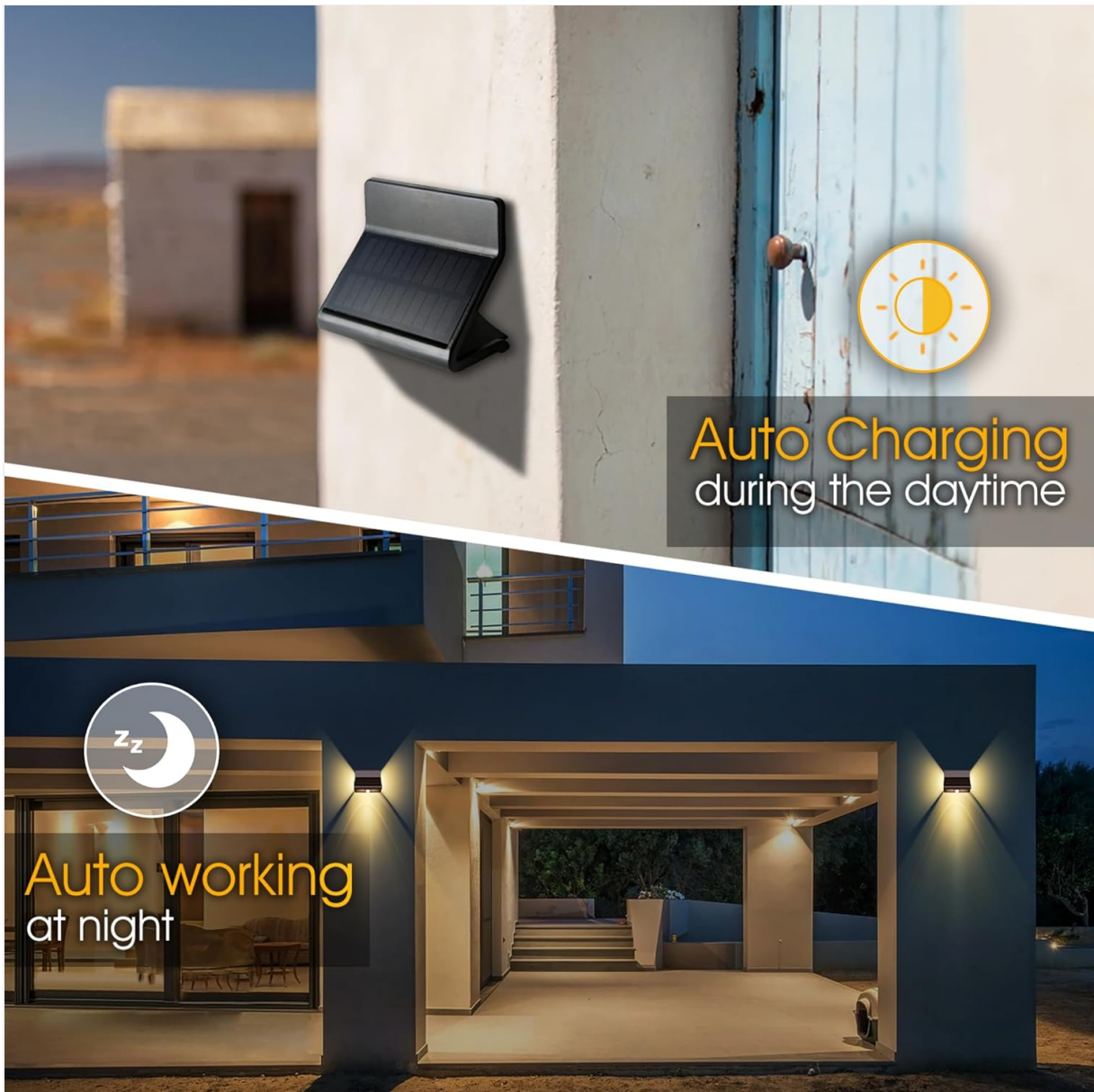


Image: Illustration showing the solar light automatically charging during the daytime and automatically working at night, illuminating an outdoor area.

2. Choosing an Installation Location

Select a location that receives ample direct sunlight throughout the day to maximize charging efficiency. Avoid areas under eaves, trees, or other obstructions that might block sunlight. The recommended installation height is 6.5 to 13 feet (2 to 4 meters).



Image: Diagram showing the motion detection range of the solar light, indicating a 300-degree detection angle and a range of 6.5-19.7 feet, with an optimal installation height of 6.5-13 feet.

3. Installation Steps

The lights can be installed using screws and wall anchors or the provided double-sided tape.

1. **Prepare the Mounting Template:** The packaging box includes a tear-off flap that can be used as a mounting guide.
2. **Mark Drill Points:** Place the template on the desired wall surface and mark the positions for drilling.
3. **Drill Holes:** Use a drill to create holes at the marked positions. Insert the wall anchors into the drilled holes.
4. **Mount the Light:** Align the light with the anchors and secure it with the provided screws. Alternatively, for smooth surfaces, apply the double-sided tape to the back of the light and firmly press it onto the wall.

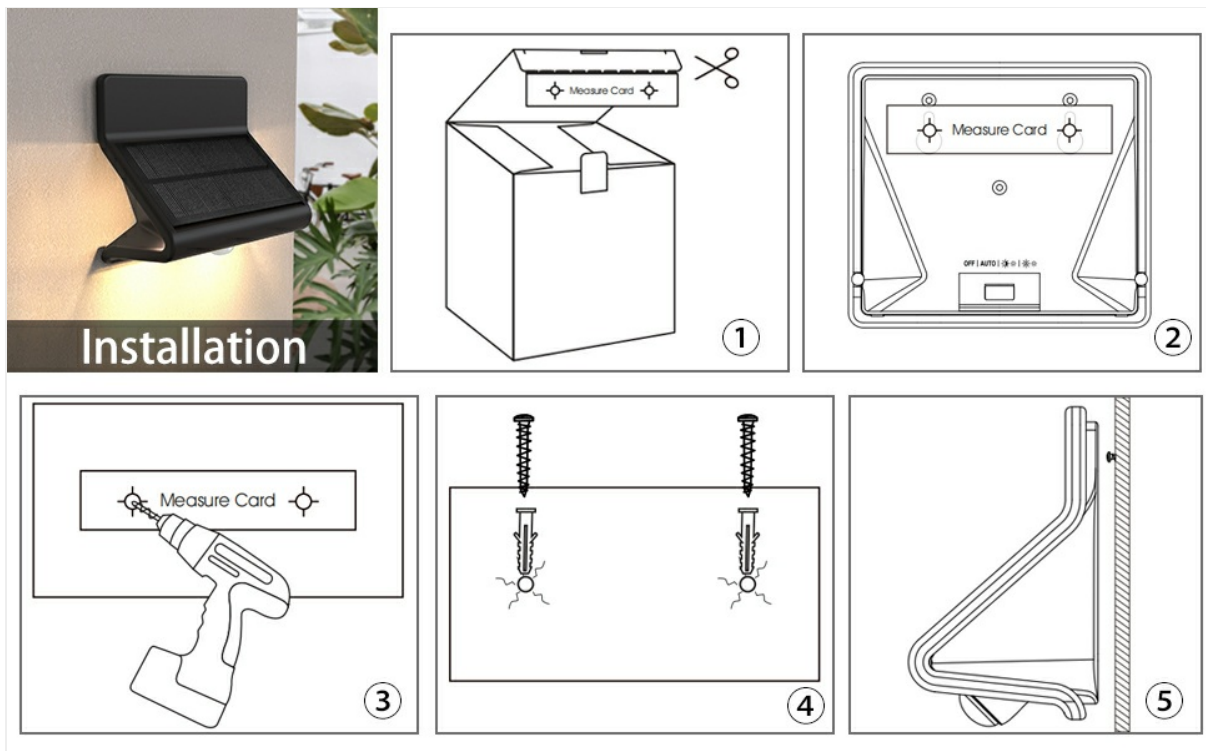


Image: A step-by-step visual guide for installing the solar light, showing how to use the measure card, drill holes, insert anchors, and mount the light.

OPERATING INSTRUCTIONS

The AURAXY Motion Sensor Outdoor Light features three distinct lighting modes. Use the mode switch button located on the unit to cycle through the modes.

Lighting Modes:

1. **Strong Light Sensing Mode (Mode 1):** The light remains off until motion is detected. Upon detection, it illuminates with strong brightness for approximately 20 seconds, then turns off.
2. **Dim Mode (Mode 2):** The light stays on at a low brightness level throughout the night. When motion is detected, it switches to full brightness for approximately 20 seconds, then returns to dim brightness.
3. **Backlight Always On (Mode 3):** The light automatically turns on at night with a constant backlight. When motion is detected, the main light illuminates with full brightness for approximately 20 seconds, while the backlight remains on.

All modes automatically turn off during the daytime to charge.

3 Light Modes

All lights turn OFF automatically in daytime

Mode 1: AUTO

- Main+Back light turns ON with full light when motion is detected.
- Main and back light turns OFF after people leaves.



Mode 2:

- Main+Back light turns ON with full light when motion is detected.
- Main light turns to 3% of full light and back light keeps ON after people leaves.



Mode 3:

- Main+Back light turns ON with full light when motion is detected.
- Main light turns OFF and back light keeps ON after people leaves.



Image: Visual representation of the three lighting modes: Strong light sensing, Dim mode, and Backlight always on, showing how the light behaves with and without motion detection.

Motion Sensor Functionality:

The integrated PIR motion sensor has a detection angle of 120° and can detect movement up to 32.8 feet (10 meters). The light will activate when motion is detected within this range in dark conditions.



Image: Iconographic representation of the motion sensor's detection range (32.8ft) and angle (120 degrees), indicating detection of people, pets, and vehicles.

MAINTENANCE

- **Cleaning:** Regularly wipe the solar panel and LED surface with a soft, damp cloth to remove dust, dirt, or debris. This ensures optimal charging and light output.
- **Solar Panel Exposure:** Ensure the solar panel remains unobstructed by leaves, snow, or other materials to allow for efficient charging.
- **Battery Longevity:** The integrated Lithium Ion battery is designed for long-term use. Avoid prolonged storage in a completely discharged state.

TROUBLESHOOTING

Problem	Possible Cause	Solution
Light does not turn on at night.	Insufficient solar charge.	Ensure the solar panel is exposed to direct sunlight for 6-8 hours daily. Clean the solar panel.
Motion sensor is not detecting.	Sensor obstructed or incorrect mode.	Clear any obstructions from the sensor. Verify the light is in a motion-sensing mode (Mode 1 or 2).
Light duration is short.	Low battery charge.	Allow the light to charge for a full day in direct sunlight.
Light is dim.	Low battery or dim mode selected.	Ensure sufficient charging. Check if the light is in Dim Mode (Mode 2) and switch if desired.

SPECIFICATIONS

Feature	Detail
Model	B09F62W75T
Brand	AURAXY
Color	Black
Shape	Rectangular
Material	Acrylonitrile Butadiene Styrene (ABS)
Finish Type	Matte
Light Source Type	LED
Power Source	Solar Powered
Item Weight	6.56 ounces (per unit)
Batteries	1 Lithium Ion battery required (included)
Voltage	3.7 Volts (DC)
Brightness	260 Lumen
Mounting Type	Wall Mount
Bulb Features	Optical lens
Color Temperature	4000 Kelvin
Number of Light Sources	16
Product Dimensions	4.72"L x 2.52"W x 4.13"H
Beam Angle	120 Degrees
Wattage	2 watts

Feature	Detail
Special Features	Back ambient light, Dimmable, Waterproof (IP44), Motion sensor

WARRANTY AND SUPPORT

AURAXY provides a one-year warranty service for this product. Additionally, a 30-day quality problem replacement is offered. The product is FCC, CE, and RoHS certified.

Should you encounter any issues, such as the product not working as expected, please contact AURAXY customer support for timely assistance. Refer to your purchase documentation for contact details.