

hipee P1

hipee P1 Smart Posture Trainer & Corrector User Manual

Model: P1

1. PRODUCT OVERVIEW

The hipee P1 Smart Posture Trainer & Corrector is designed to help users improve their posture through intelligent vibration reminders and real-time tracking via a dedicated mobile application. This device promotes natural muscle training for sustained posture correction.

Key features include:

- Smart vibration reminders for posture correction.
- App control for personalized settings and real-time posture analysis.
- Lightweight and strapless design for comfortable wear.
- USB rechargeable with long battery life.
- Skin-friendly silicone material.

hipee

health intelligent simple

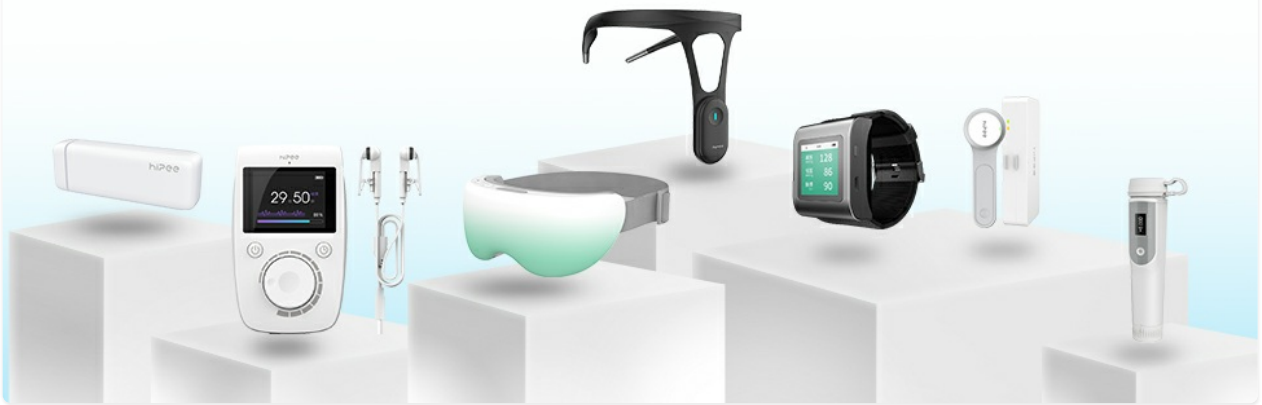


Image 1.1: The hipee P1 Smart Posture Trainer being worn by individuals, demonstrating its discreet design and integration with the mobile application for real-time posture monitoring.

2. WHAT'S IN THE BOX

Upon unpacking your hipee P1 Smart Posture Trainer, please ensure all items are present:

- 1 x hipee P1 Posture Corrector
- 1 x USB Charging Cable
- 1 x User Manual (this document)

Minimalist Packaging

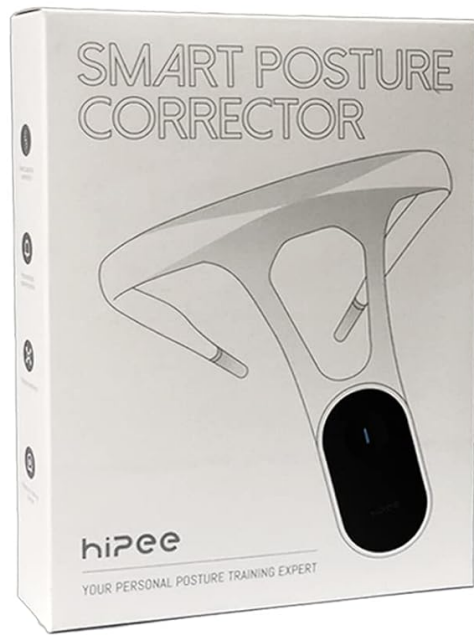
"Quite simple to use, all what we need is just a USB charging socket, no additional accessories or consumables are needed."



① Posture Corrector



② USB Cable



③ Manual

Image 2.1: The hiPee P1 Posture Corrector, USB charging cable, and user manual as included in the product packaging.

3. SETUP GUIDE

3.1 Initial Charging

Before first use, fully charge the hiPee P1 device. Insufficient battery power may prevent the device from turning on.

1. Locate the charging port: The charging port is discreetly hidden. Gently detach the sensor module from the neck loop to reveal the Type-C charging port on its side.
2. Connect the USB charging cable to the device and a suitable USB power source.
3. The indicator light will turn blue once fully charged. Charging typically takes approximately 1.5 hours.

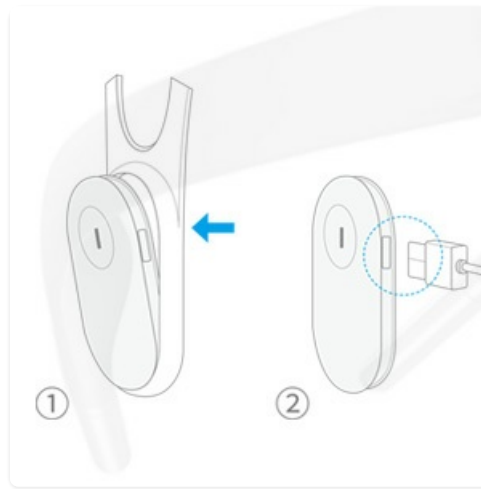


Image 3.1: Illustration of detaching the sensor module from the neck loop to access the hidden Type-C charging port.

3.2 App Installation and Bluetooth Pairing

The hipee P1 operates optimally with the dedicated mobile application for real-time tracking and personalized settings.

1. Download the "POSTURE UP" app from the Apple App Store or Google Play Store.
2. Ensure your phone's Bluetooth is enabled.
3. Open the app and follow the on-screen instructions to pair your hipee P1 device. The device number for pairing will follow the format: **Hi-JZ-xxxxxxxxxxx**.



Image 3.2: QR codes provided for convenient download of the "POSTURE UP" application from app stores.

3.3 Wearing the Device

The hipee P1 is designed to be worn comfortably around the neck.

1. Place the device around your neck.
2. Position the sensor module at the back, between your shoulder blades. For optimal performance, the sensor should ideally touch your skin directly. Wearing it over thin clothing is also acceptable.
3. Ensure the device is comfortable and does not restrict movement.

Light Weight & Tiny Size , Strapless



- WEIGHT: 2.2 oz
- NECK CIRCUMFERENCE :13.39-16.93 in

Image 3.3: The hiPee P1 device showing its dimensions and how it rests on the back of the neck, with the sensor positioned between the shoulder blades.

3.4 Calibration

Calibration is a one-time process required during the first use to establish your correct posture baseline.

- After wearing the device and connecting it to the app, follow the startup animation within the app to complete the calibration process.
- Stand or sit in your ideal posture during calibration.



Image 3.4: A visual guide detailing the four steps for setting up the hipee P1: turning on, wearing, calibrating, and starting tracking.

4. OPERATING INSTRUCTIONS

4.1 Powering On/Off

- To power on: Long press the button on the sensor module for 3 seconds. The blue indicator will flash, and a single vibration will occur.
- To power off: Long press the button on the sensor module until the device powers down.

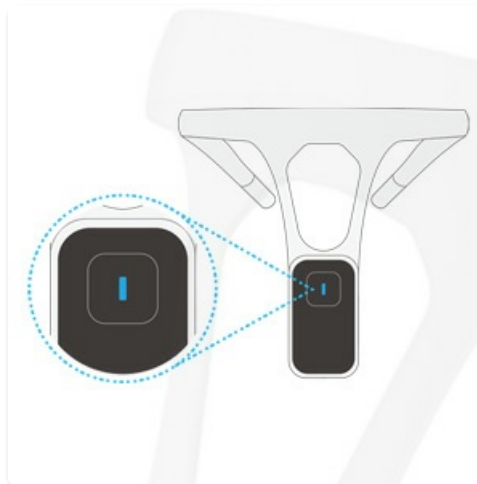


Image 4.1: A close-up view of the hipee P1 sensor module, highlighting the indicator light for power and status.

4.2 Posture Monitoring and Reminders

Once calibrated and powered on, the hipee P1 will monitor your posture and provide vibration reminders when you deviate from your set posture.

- **Vibration Reminders:** The device will gently vibrate when it detects that your back is leaning forward beyond the set trigger angle.
- **Real-time Tracking:** The "POSTURE UP" app provides real-time analysis of your posture, allowing you to track progress and identify areas for improvement.

Tracking & Analyzing With Free App

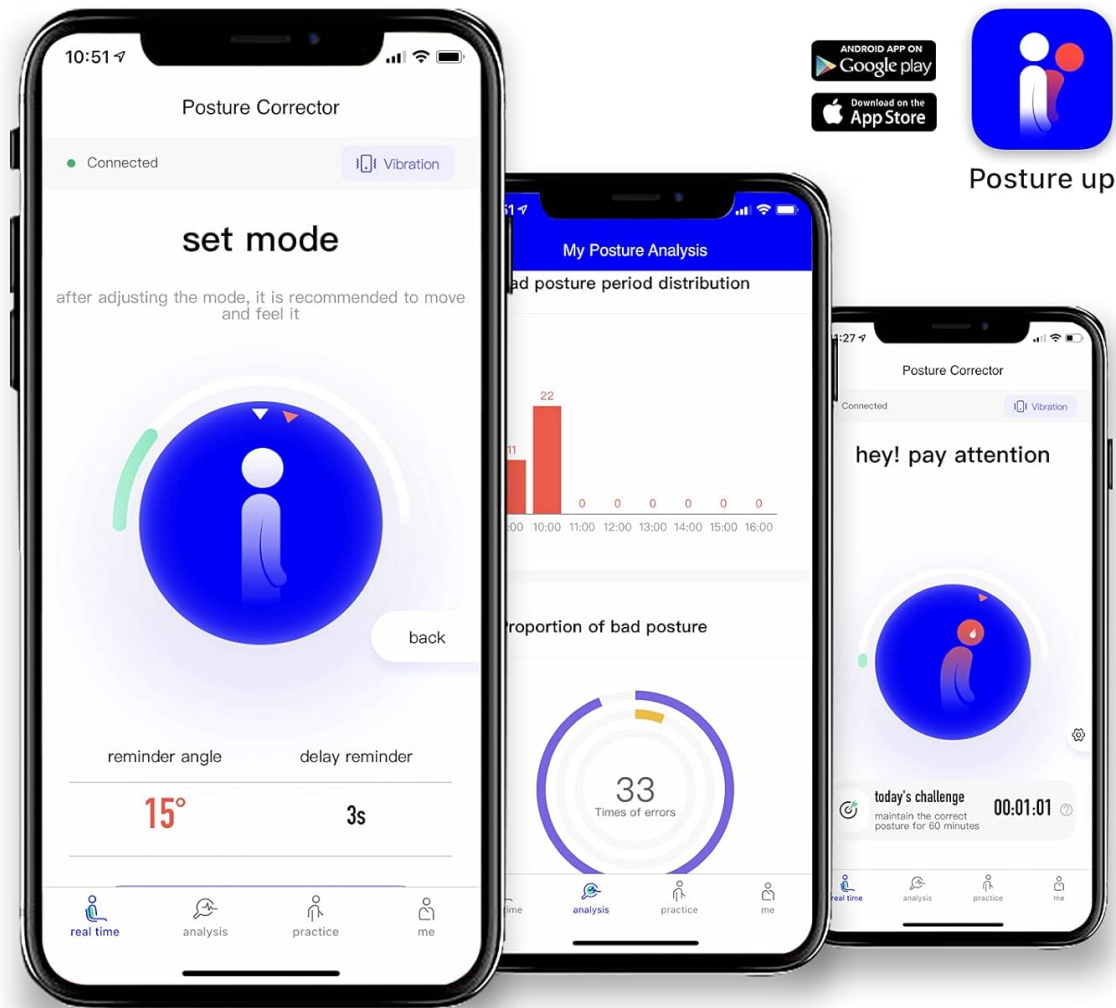


Image 4.2: Screenshots of the "POSTURE UP" app interface, displaying real-time posture data, analysis, and daily challenges.

4.3 App Settings and Customization

The "POSTURE UP" app allows you to customize various settings to suit your needs:

- **Reminder Angle:** Adjust the angle (5-30°) at which the device triggers a vibration reminder.
- **Delay Time:** Set a delay (0-20 seconds) for reminders, preventing vibrations for brief posture deviations.
- **Intelligent Filtering Mode:** This mode, enabled by default, cancels unnecessary reminders during activities like sitting, standing up, bending over, or tying shoelaces. You can disable this feature in the app if desired (*Me > Device Management > Personalized Reminder Settings > Intelligent Filtering Reminder Scene > Switch OFF*).

Reminder Mode Adjustable



Image 4.3: Visual representation of the adjustable reminder settings, including angle, vibration intensity, delay time, and intelligent filter.

5. MAINTENANCE

5.1 Charging

The hippee P1 features a rechargeable lithium battery. A full charge provides approximately 50 hours of use.

- Recharge the device when the indicator light turns red, signaling low battery.
- Use the provided USB charging cable.

5.2 Cleaning

The device is made with skin-friendly silicone. To maintain hygiene:

- Wipe the device gently with a soft, damp cloth.
- Do not use harsh chemicals or abrasive cleaners.
- Ensure the device is completely dry before charging or storing.

6. TROUBLESHOOTING

Problem	Possible Cause	Solution
Device cannot be turned on.	Insufficient battery power.	Fully charge the device for approximately 1.5 hours. The indicator light will turn blue when fully charged.
Indicator light is red.	Low battery.	Recharge the device.
Cannot find the charging port.	The charging port is hidden.	Disassemble the sensor module from the neck loop to access the Type-C charging port on its side.
Trigger angle settings from the app do not take effect.	Bluetooth pairing issue.	Ensure your phone's Bluetooth is enabled and correctly paired with the device (device number format: Hi-JZ-xxxxxxxxxx).
No reminders when bending over.	Intelligent Filtering Mode is enabled.	This mode is designed to cancel unnecessary reminders during common movements. If you wish to receive reminders for these actions, disable Intelligent Filtering Mode in the app: <i>Me > Device Management > Personalized Reminder Settings > Intelligent Filtering Reminder Scene > Switch OFF.</i>
Bluetooth connection issues with the app.	Incorrect pairing or Bluetooth interference.	Ensure Bluetooth is active on your phone. Forget the device in your phone's Bluetooth settings and re-pair through the "POSTURE UP" app. Ensure no other devices are interfering.

hipee Tips

1 Suitable Neck Circumference

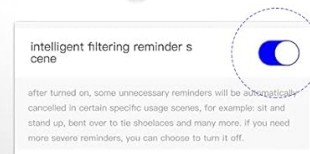
We recommend it for customers with a neck circumference between **13.39-16.93 inches** for now.

2 Check out Bluetooth enabled or not

Hipee P1 corrector connects to phone via Bluetooth. If you want to set up posture corrector with your phone, please make sure Bluetooth is enabled.

3 No reminders when bending over

Take it easy, it's just fine. This is intelligent filtering mode, which will cancel unnecessary reminders, such as sit, stand up, bend over, tie shoelaces. This mode has been turned on by default, if you don't like, you might turn it off as follow step:



me ▶ *device management* ▶ *personalized reminder settings* ▶ *intelligent filtering reminder scene* ▶ *switch OFF*

4 Can't find the charging port

The charging port was hidden designed, you might disassemble sensor from neck loop, then you will find charging port on the side.

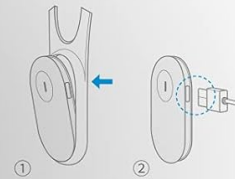


Image 6.1: A summary of common hipee P1 tips, including suitable neck circumference, Bluetooth checks, intelligent filtering, and locating the charging port.

7. SPECIFICATIONS

Feature	Detail
Model	P1
Brand	hipee
Product Dimensions	6.57 x 5.39 x 4.72 inches (167mm x 137mm)
Weight	2.2 ounces (4.66 ounces packaged)
Neck Circumference (Recommended)	13.39 - 16.93 inches
Battery Type	1 Lithium Ion battery (included)
Charging Time	Approximately 1.5 hours

Feature	Detail
Battery Life	Up to 50 hours on a full charge
Connectivity	Bluetooth
Adjustable Reminder Angle	5° - 30°
Adjustable Delay Time	0 - 20 seconds
Material	Skin-friendly silicone
Certifications	CMA, SRRC, FCC
Recommended Age Range	Adults and adolescents (neck circumference 13.39-16.93 inches)



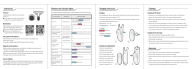



Image 7.1: An exploded view of the hipee P1 sensor, highlighting internal components, material details, charging port, and product certifications.

8. WARRANTY AND SUPPORT

The hiPee P1 Smart Posture Trainer is designed for durability and performance. For any questions or assistance during use, please contact hiPee customer support.

Please refer to the product packaging or the official hiPee website for specific warranty terms and contact information.

Related Documents - P1

	<p>HIPEE Smart Posture Corrector P1 User Manual and Specifications</p> <p>Detailed user manual for the HIPEE Smart Posture Corrector P1, covering setup, operation, charging, cleaning, storage, warranty, and technical specifications. Learn how to improve your posture with this wearable device.</p>
	<p>hiPee Smart Posture Corrector User Manual and Guide</p> <p>Comprehensive guide to using the hiPee Smart Posture Corrector device, including charging, cleaning, usage instructions, and troubleshooting tips. Learn how to improve your posture with this smart wearable.</p>
	<p>HiPee Smart Posture Correction Wizard P1 - User Manual & Specifications</p> <p>Comprehensive user manual and specifications for the HiPee Smart Posture Correction Wizard (Model P1), detailing setup, usage, charging, cleaning, and warranty information.</p>
	<p>HiPee Smart Posture Corrector User Guide</p> <p>Comprehensive user guide for the HiPee Smart Posture Corrector (Model P1), detailing assembly, wear instructions, operation, charging, maintenance, safety precautions, and warranty information.</p>