



Manuals.plus /

› **BINIZE** /

› BINIZE Portable Carplay Screen Navigation (Model: B09DSMJ59X) Instruction Manual

BINIZE B09DSMJ59X

BINIZE Portable Carplay Screen Navigation Instruction Manual

Model: B09DSMJ59X

INTRODUCTION

This manual provides detailed instructions for the BINIZE Portable Carplay Screen Navigation system. It covers setup, operation, and maintenance to ensure optimal performance and user experience.

SAFETY INFORMATION

- Ensure the device is securely mounted and does not obstruct your view or interfere with vehicle controls.
- Connect the power cord only to a 12V cigarette lighter port.
- Do not attempt to disassemble or modify the device.
- Always prioritize safe driving. Do not operate the device in a way that distracts you from the road.

PACKAGE CONTENTS

Verify that all items are present in the package:

- BINIZE Portable Carplay Screen Navigation Unit
- Cigarette Lighter Power Cable
- USB Extension Cable
- Audio Output Cable (RCA)
- Mounting Bracket with 3M Adhesive
- Remote Control
- User Manual (this document)

SETUP

1. Mounting the Device

Choose a suitable location on your dashboard that does not obstruct your view or vehicle controls.

Only suitable for cars with cigarette lighter port and FM Radio



The base of the mounting bracket comes with 3M adhesive. Clean the dashboard surface thoroughly before attaching the base. Securely attach the unit to the bracket.

How to get sound?



1. Adjust the same FM radio frequency from original car radio and portable monitor
2. Two RCA ports for subwoofer connection if you are in need



Adjust the screen angle for optimal viewing.

2. Power Connection

Connect the cigarette lighter power cable to the device and insert it into your vehicle's 12V cigarette lighter port. The device will power on automatically.

Portable Android Auto

Wired USB data cable connection, it allows to use phone online navigation, Bluetooth Music and Bluetooth Handfree call, etc



Ensure the vehicle's voltage is between 12V and 14V.

Your browser does not support the video tag.

This video demonstrates the initial power-up sequence of the BINIZE Portable Carplay Screen Navigation unit by connecting it to a cigarette lighter port. It shows the "welcome" screen appearing upon successful power-on.

OPERATING INSTRUCTIONS

1. Initial Setup and Language Selection

Upon first power-on, the device will display the home screen. Navigate to the "Settings" menu to select your preferred language.



2. Audio Output Options

The monitor itself does not have internal speakers. Sound is routed through your original car audio system.

FM Transmitter

To use the FM transmitter, set the device's FM frequency to match an unused FM channel on your car's stereo.

7 inch portable car intellidash screen compatible with Apple Carplay and Android Auto



Ensure both the device and your car stereo are tuned to the same FM frequency for audio output.

RCA Audio Output

For additional audio requirements, such as connecting to a subwoofer or amplifier, use the two RCA ports (White: Audio Out Left, Red: Audio Out Right).

Portable Android Auto

Wired USB data cable connection, it allows to use phone online navigation, Bluetooth Music and Bluetooth Handfree call, etc



3. Apple CarPlay Connection

To use Apple CarPlay, connect your iPhone to the device using an original Apple data cable via the USB port on the right side of the player.



Compatible with Apple Carplay

Sync third party map from your iPhone to the player, more navigation options, keep your phone free, let the device guide you!

Select "i-Play" in the device settings. Grant any necessary permissions on your iPhone.

Your browser does not support the video tag.

This video demonstrates how to connect an iPhone to the BINIZE Portable Carplay Screen Navigation for Apple CarPlay functionality. It shows the steps to select "i-Play" in settings and connect the original data cable.

4. Android Auto Connection

To use Android Auto, connect your Android phone to the device using an original data cable via the USB port on the right side of the player.



Select "A-Auto" in the device settings. Grant any necessary permissions on your Android phone.

Your browser does not support the video tag.

This video illustrates the process of connecting an Android phone to the BINIZE Portable Carplay Screen Navigation for Android Auto. It guides the user to select "A-Auto" in settings and connect the data cable.

5. MirrorLink (iPhone)

To mirror your iPhone screen, connect your iPhone to the device using an original Apple data cable via the USB port on the right side of the player.

Select "i-Mirror" in the device settings. Grant permissions on your iPhone. The iPhone screen will be projected onto the player's screen.

Your browser does not support the video tag.

This video demonstrates the MirrorLink function for iPhone, showing how to connect the device and mirror the phone's display.

6. MirrorLink (Android Phone)

To mirror your Android phone screen, connect your Android phone to the device using an original data cable via the USB port on the right side of the player.

Select "A-Link" in the device settings. Grant permissions on your Android phone. The Android phone screen will be projected onto the player's screen.

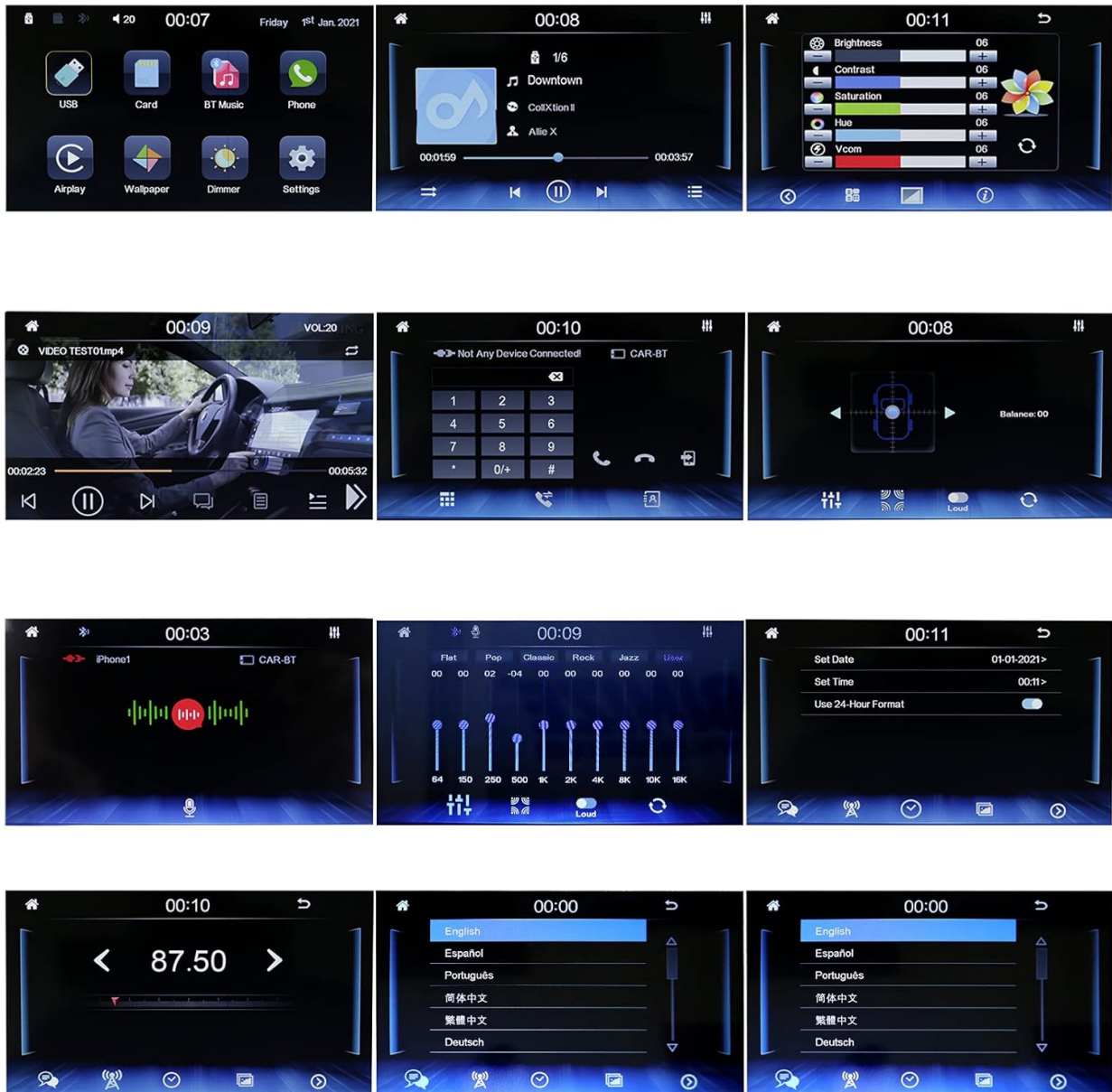
Your browser does not support the video tag.

This video demonstrates the MirrorLink function for Android phones, showing how to connect the device and mirror

the phone's display.

7. USB Flash Drive Reading

Insert a USB flash drive into the USB extension cable to play music or videos. The device supports various media formats.



8. Phone Charging

The USB extension cable can also be used to charge your mobile phone.

MAINTENANCE

- Keep the screen clean using a soft, dry cloth. Avoid abrasive cleaners.
- Ensure all cable connections are secure.
- Avoid exposing the device to extreme temperatures or direct sunlight for prolonged periods.

TROUBLESHOOTING

Problem	Possible Cause	Solution
Device does not power on.	No power from cigarette lighter.	Check vehicle's 12V port. Ensure power cable is securely connected.
No sound output.	FM frequency not synchronized or incorrect RCA connection.	Match FM frequency on device and car stereo. Verify RCA cable connections.
CarPlay/Android Auto not connecting.	Non-original data cable, incorrect settings, or phone permissions.	Use original data cable. Check "i-Play" or "A-Auto" settings. Grant all necessary phone permissions.
MirrorLink not working.	Incorrect settings or phone permissions.	Check "i-Mirror" or "A-Link" settings. Grant all necessary phone permissions.
Screen freezes or is unresponsive.	Temporary software glitch.	Restart the device by unplugging and re-plugging the power cable.

For further assistance, please contact BINIZE customer support.

SPECIFICATIONS

Feature	Detail
Brand	BINIZE
Model Number	B09DSMJ59X
Connectivity Technology	Bluetooth, RCA, USB
Controller Type	Android, Google Assistant
Special Feature	Touchscreen
Compatible Devices	Smartphone
Audio Output Mode	Stereo
Number of Channels	4
Video Encoding	H.264, H.265/HEVC
Control Method	Touch
Wireless Technology	Bluetooth
Power Input	12V (via cigarette lighter)

Note: Specifications are subject to change without prior notice.

WARRANTY AND SUPPORT

BINIZE products come with a standard manufacturer's warranty. Please refer to the warranty card included in your package for specific terms and conditions.

For technical support, warranty claims, or any other inquiries, please visit the official BINIZE website or contact their customer service team.

Visit the BINIZE Store on Amazon