

manuals.plus /

› [OUKITEL](#) /

› [OUKITEL WP15 5G Rugged Smartphone User Manual](#)

OUKITEL WP15

OUKITEL WP15 5G Rugged Smartphone User Manual

Model: WP15

1. INTRODUCTION

The OUKITEL WP15 is a robust 5G rugged smartphone designed for durability and extended use in challenging environments. It features an ultra-large 15600mAh battery, a powerful MediaTek Dimensity 700 octa-core processor, and runs on Android 11. Equipped with a 48MP triple camera system and a 6.52-inch HD+ display protected by Corning Gorilla Glass, the WP15 is built to withstand water, dust, and drops, making it an ideal companion for outdoor enthusiasts and professionals.



Figure 1: OUKITEL WP15 5G Rugged Smartphone, showcasing its robust design and large battery capacity.

2. SETUP

2.1 SIM Card and MicroSD Card Installation

The OUKITEL WP15 supports dual SIM cards and a MicroSD card for expanded storage. Locate the SIM/TF card slot on the side of the device. Use the provided SIM ejector tool to open the tray. Carefully place your Nano-SIM cards and MicroSD card into the designated slots on the tray, ensuring correct orientation. Gently push the tray back into the phone until it is flush with the device body.

5G Dual SIM Design
Ultra Wide Global Bands

GSM: B2/B3/B5/B8
CDMA: BC0/BC1 (RXD)
**WCDMA: B1/B2/B4/B5/
B8/B6/B19(RXD)**
NR: n1/3/5/8/20/28/38/41/77/78/79

**FDD: B1/B2/B3/B4/B5/B7/
B8/B12/B13/B17/B18/B19/
B20/B25/B26/B28A/B28B/B66**
TDD: B34/B38/B5G39/B40/B41

The illustration shows a 5G signal strength indicator and battery icon in the top left corner of a phone screen. Below the screen, a SIM tray is shown with two SIM cards (SIM1 and SIM2) and a MicroSD card slot.

Figure 2: Illustration of the OUKITEL WP15's 5G Dual SIM design, showing SIM1 and MicroSD card slots.

2.2 Initial Charging

Before first use, fully charge your OUKITEL WP15. Connect the provided USB cable to the phone's Type-C port and the other end to the 18W rapid charger. A full charge for the 15600mAh battery typically takes approximately 5 hours. The device supports over 1300 standby hours, 130 calling hours, 247 MP3 music hours, and 35 online video hours on a single charge.

Largest Battery Monster

Long-lasting battery, support 5 days of normal use

15600mAh

18W

Fast Charging



1300 hrs
Standby



247 hrs
Music



130 hrs
Call



36 hrs
Video



Type-C
Port

Figure 3: Visual representation of the OUKITEL WP15's 15600mAh battery capacity and 18W fast charging capability.

3. OPERATING INSTRUCTIONS

3.1 Power On/Off

- To power on: Press and hold the Power button (located on the right side) until the OUKITEL logo appears.
- To power off: Press and hold the Power button, then select "Power off" from the options on the screen.
- To restart: Press and hold the Power button, then select "Restart" from the options.

3.2 Basic Navigation (Android 11)

The OUKITEL WP15 operates on Android 11, offering intuitive navigation and enhanced privacy features. Swipe up from the bottom of the screen to access the app drawer. Swipe down from the top to view notifications and quick settings. Utilize gestures or on-screen navigation buttons for home, back, and recent apps.

Latest Android 11 OS

Well Protect Your Privacy

android 11 

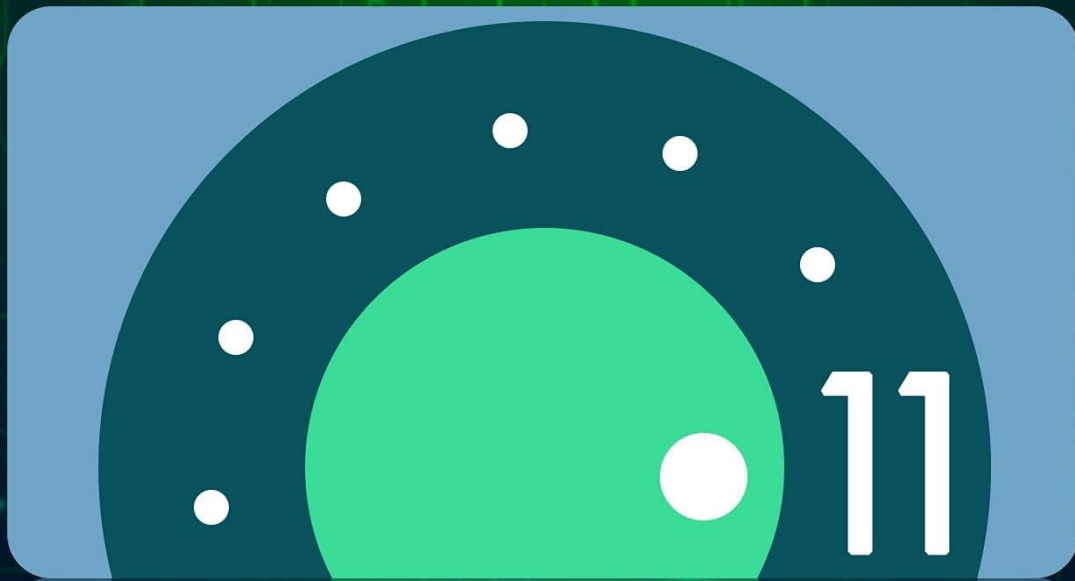


Figure 4: The OUKITEL WP15 running the Android 11 operating system, highlighting its user interface.

3.3 Camera Usage

The WP15 features a 48MP main rear camera, a 2MP macro camera, and a 2MP Bokeh camera, along with an 8MP front camera. Open the Camera application to capture photos and videos. Various modes are available, including:

- **Photo:** Standard photo capture.
- **Video:** Record videos.
- **Macro:** For close-up shots of small objects.
- **Bokeh:** For portraits with blurred backgrounds.
- **Night Vision:** Utilize the phone's capabilities for enhanced visibility in low-light conditions.
- **Underwater Camera Mode:** Specifically designed for capturing images and videos while submerged.

Ultra Clear Triple Camera

What you photograph is what you see



Figure 5: Detailed view of the OUKITEL WP15's 48MP triple camera setup, including macro and Bokeh lenses.

3.4 Display Features

The device is equipped with a 6.52-inch HD+ full view screen (720x1600p resolution) protected by Corning Gorilla Glass, offering scratch resistance and durability. The display provides clear visuals for various applications.

6.52 inches Corning Gorilla Glass Display



Figure 6: The 6.52-inch HD+ full view screen of the OUKITEL WP15, featuring Corning Gorilla Glass for enhanced durability.

3.5 Additional Features

- **NFC & Google Pay:** Supports Near Field Communication for contactless payments and data transfer.
- **Glove Mode:** Allows for touch screen operation while wearing gloves.
- **GPS, Galileo, Glonass, Beidou:** Multiple navigation satellite systems for accurate positioning.
- **Face/Fingerprint ID:** Secure biometric unlocking options.
- **Gesture Function:** Customizable gestures for quick actions.
- **Reserve Charging (OTG):** Use the phone as a power bank to charge other devices.
- **4 LED Flashlights:** Integrated powerful flashlights for illumination.
- **Outdoor Tool Bag:** Includes pre-installed tools like Compass, SoundMeter, Pic Hanging, Gradienter, Plumb Bob, Protractor, Warning, Magnifier.

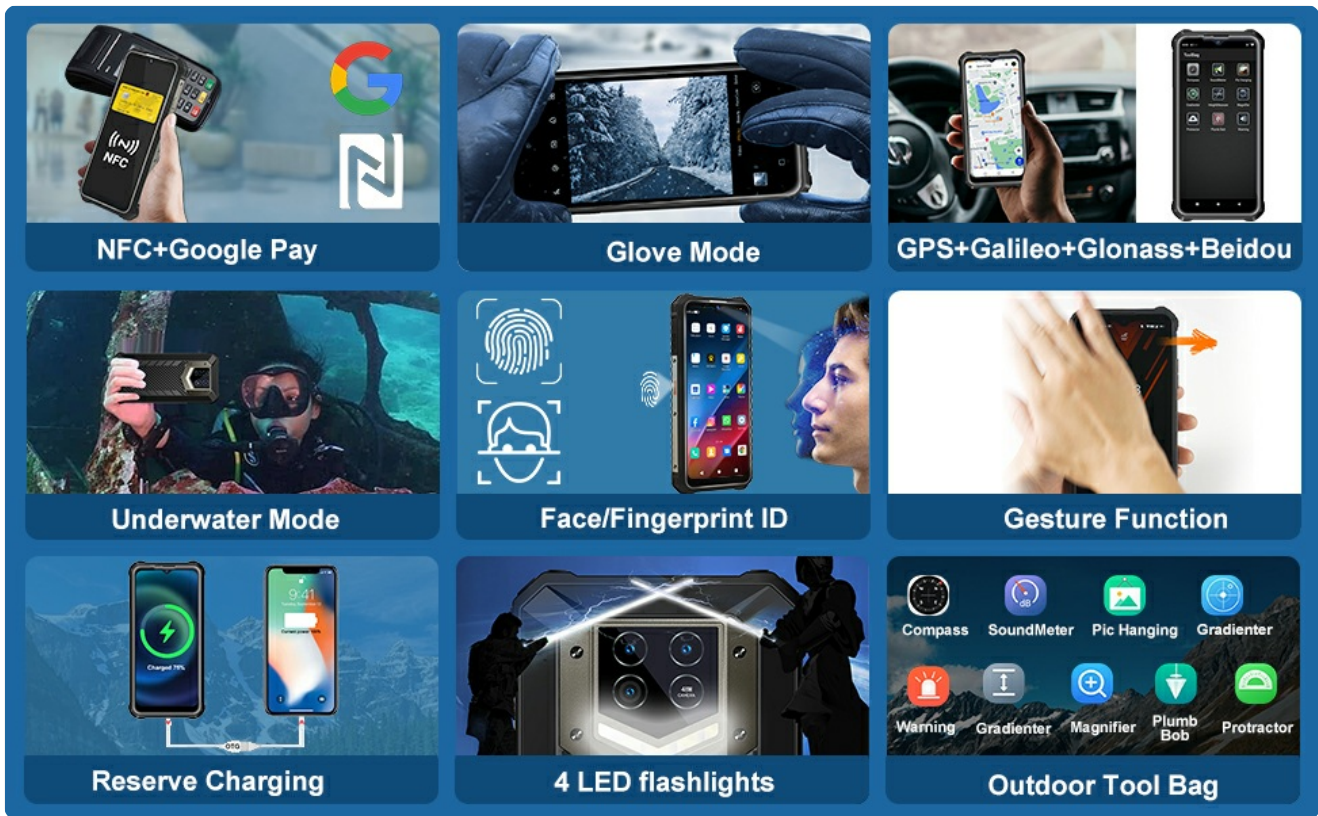


Figure 7: Overview of various advanced features of the OUKITEL WP15, including NFC, Glove Mode, GPS, and biometric security.

4. MAINTENANCE

4.1 Ruggedness Features

The OUKITEL WP15 is designed to be highly durable, having passed IP68 and IP69K certifications for water and dust resistance, and MIL-STD-810G for shock resistance. It can withstand submersion in 1.5m depth water for 30 minutes and drops from 1.5m height. The device is also resistant to extreme temperatures, operating effectively from -20°C to 60°C.



OUKITEL WP15

Military Standard

With IP68, IP69K, MIL-STD-810G Certification



Figure 8: The OUKITEL WP15 demonstrating its IP68, IP69K, and MIL-STD-810G certifications for water, dust, and drop resistance.

4.2 Cleaning and Care

To maintain your device, wipe the screen and body with a soft, lint-free cloth. For stubborn dirt, a slightly damp cloth can be used. Ensure all ports are dry before charging or connecting accessories. Avoid using harsh chemicals or abrasive materials, as these can damage the phone's protective coatings.

5. TROUBLESHOOTING

This section addresses common issues you might encounter with your OUKITEL WP15.

5.1 Carrier Compatibility Issues

The OUKITEL WP15 5G network primarily supports T-mobile (N41), Sprint (N41), and Cricket Wireless (N5). It does **NOT** support other carriers such as Verizon or AT&T 5G networks. For 4G networks, it supports T-mobile, Ting, CTExel, FreedomPop, Boost Mobile, Verizon Wireless, U.S. Cellular, etc. It does **NOT** support AT&T, CRICKET, or GCI 4G networks. Always confirm your SIM card's compatibility with the phone's frequency bands before purchase or if experiencing network issues.

5.2 Background Apps Closing Unexpectedly

If applications in the background close automatically when the screen goes to sleep, this may be due to a system optimization setting. To address this, you can try the following:

1. Enable Developer Options: Go to **Settings > About phone**, then tap **Build number** seven times.
2. Navigate to **Settings > System > Developer options**.
3. Find **Running services** or a similar option related to background processes.
4. Look for a setting like "screen turn off service" or "OMACP" and attempt to stop or disable it. Note that this setting might reset upon phone restart.

5.3 Fingerprint Scanner Not Working

If the fingerprint scanner becomes unresponsive, try the following steps:

- Ensure your finger and the sensor are clean and dry.
- Re-register your fingerprints in **Settings > Security > Fingerprint**.
- Restart the phone.
- If the issue persists, consider a factory reset (back up your data first).

5.4 Bluetooth Connectivity Issues

If you experience issues with Bluetooth, such as "Bluetooth Keeps Stopping" messages or inability to connect:

- Toggle Bluetooth off and on from Quick Settings or **Settings > Connected devices > Bluetooth**.
- Forget the problematic device and re-pair it.
- Clear the Bluetooth cache: Go to **Settings > Apps & notifications > See all apps > Bluetooth** (you might need to show system apps) > **Storage & cache > Clear cache** and **Clear storage**.
- Restart the phone.

6. SPECIFICATIONS

| Feature | Specification |
|-------------------------------------|---------------------------------------|
| Product Dimensions | 7.02 x 1.06 x 3.39 inches |
| Item Weight | 2.05 pounds (0.93 Kilograms) |
| Model Number | WP15 |
| Batteries | 1 Lithium Ion battery (included) |
| OS | Android 11.0 |
| RAM | 8 GB |
| Memory Storage Capacity | 128 GB (Supports TF card up to 256GB) |
| Wireless Communication Technologies | Cellular, NFC |
| Connectivity Technologies | NFC |

| Feature | Specification |
|------------------------------|--|
| Display Features | Wireless |
| Human Interface Input | Touchscreen |
| Scanner Resolution | 720 x 1600 pixels |
| Other Camera Features | Front (8MP), Rear (48MP Main + 2MP Macro + 2MP Bokeh) |
| Form Factor | Smartphone |
| Color | Black |
| Battery Power Rating | 15600 Milliampere Hour (mAh) |
| Phone Talk Time | 48 Hours |
| What's in the box | USB Cable |
| Manufacturer | OUKITEL |
| Date First Available | August 27, 2021 |
| Standing Screen Display Size | 6.52 Inches |
| Charging Time | 5 Hours (with 18W rapid charge) |
| Wireless Carrier | Unlocked for All Carriers (with specific 5G/4G band limitations) |
| Cellular Technology | 5G |

7. WARRANTY AND SUPPORT

OUKITEL provides a standard manufacturer's warranty for the WP15 smartphone. For specific warranty terms, conditions, and duration, please refer to the warranty card included in your product packaging or visit the official OUKITEL website. For technical support, troubleshooting assistance beyond this manual, or service inquiries, please contact OUKITEL customer service through their official channels. Keep your purchase receipt as proof of purchase for warranty claims. You can find more information and contact details on the [OUKITEL Store on Amazon](#).