

## WYZE WYZECP2

# Wyze Cam Pan v2 Indoor Smart Home Camera User Manual

**Brand:** WYZE | **Model:** WYZECP2

## 1. INTRODUCTION

The Wyze Cam Pan v2 is an indoor smart home camera designed to provide comprehensive surveillance with its pan, tilt, and zoom capabilities. This device features 1080p HD video, Color Night Vision, two-way audio, and automatic motion tracking, making it suitable for monitoring various indoor environments. This manual provides instructions for setting up, operating, and maintaining your Wyze Cam Pan v2.





Front view of the Wyze Cam Pan v2 camera, showcasing its compact design and lens.

### Key Features:

- **360° Coverage:** Pan, tilt, and zoom functionality allows for a full view of any room.
- **1080p HD Video:** Clear live streaming and recording.
- **Color Night Vision:** Enhanced visibility in low-light conditions using a Starlight Sensor.
- **Two-Way Audio:** Communicate through the camera using the built-in microphone and speaker.
- **Automatic Motion Tracking:** The camera automatically follows and records detected movement.
- **Smart Assistant Compatibility:** Works with Amazon Alexa and Google Assistant for voice control.

## 2. WHAT'S IN THE BOX

Verify that all components are present in the package:

- Wyze Cam Pan v2 Camera
- USB Power Cable
- Power Adapter
- Quick Start Guide (not included in this manual)



Rear view of the Wyze Cam Pan v2, highlighting the speaker grille and power input port.

### 3. SETUP GUIDE

Follow these steps to set up your Wyze Cam Pan v2:

1. **Download the Wyze App:** Search for "Wyze" in your smartphone's app store (iOS or Android) and download the official application.
2. **Create or Log In to Your Account:** Open the Wyze app and follow the prompts to create a new account or log in if you already have one.
3. **Power On the Camera:** Connect the USB power cable to the camera's power port and plug the power adapter into a standard electrical outlet. The camera will begin its startup sequence.
4. **Add Device in App:** In the Wyze app, tap the "+" icon in the top left corner, then select "Add Device." Choose "Cameras" and then "Wyze Cam Pan v2."
5. **Pairing:** Follow the on-screen instructions in the app to pair your camera. This typically involves scanning a QR code displayed on your phone with the camera's lens and connecting to your Wi-Fi network.
6. **Initial Calibration:** The camera will perform an initial calibration, rotating to its full range of motion. Once complete, your camera is ready for use.



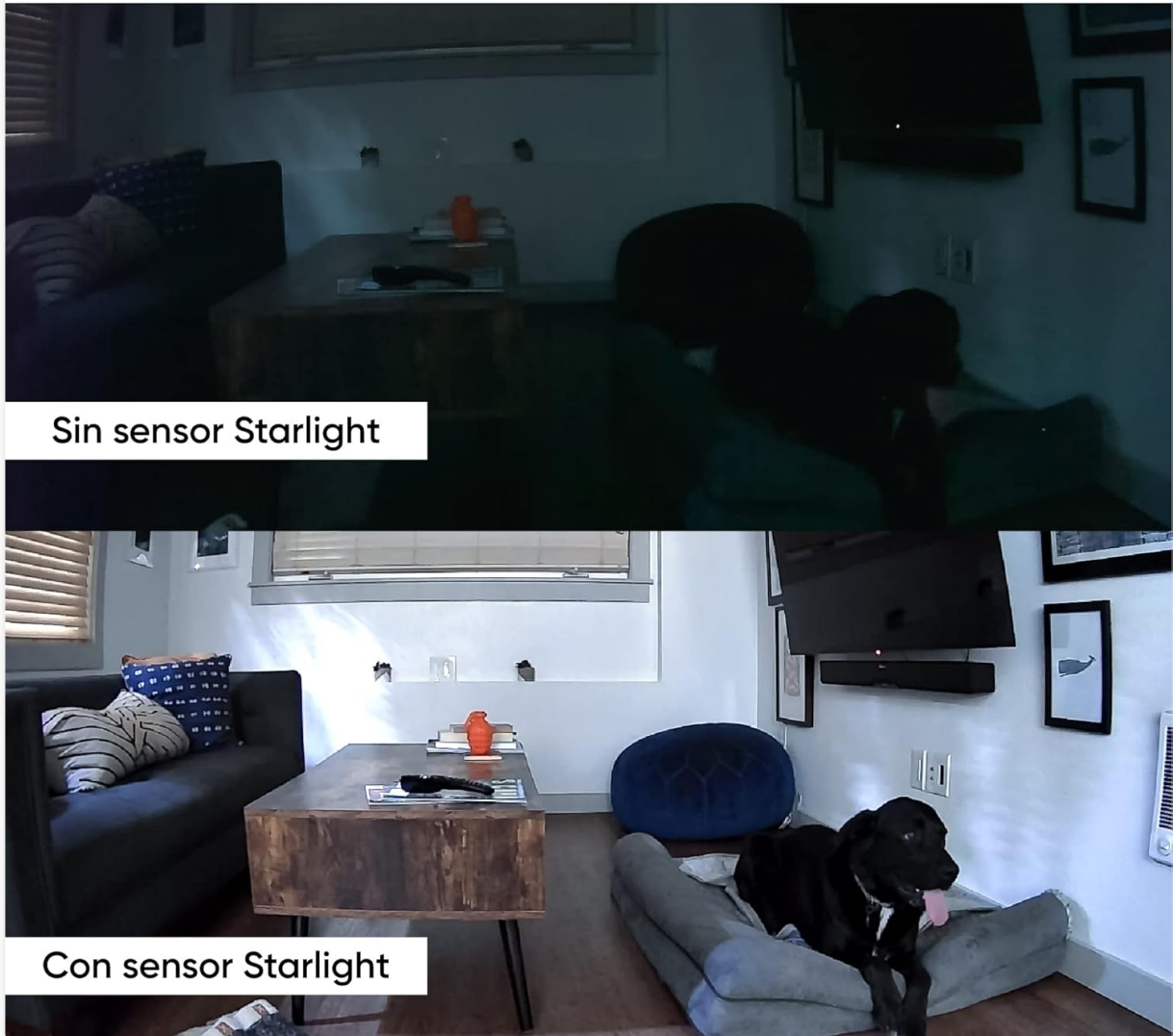
The Wyze Cam Pan v2 positioned on a shelf, demonstrating a typical indoor placement.

## 4. OPERATING INSTRUCTIONS

### 4.1 Pan, Tilt, and Zoom (PTZ)

Control the camera's viewing angle directly from the Wyze app. Use the directional controls to pan horizontally up to 360 degrees and tilt vertically up to 93 degrees. The camera can rotate at a speed of 110 degrees per second, allowing for quick adjustments to monitor different areas of a room.

**Graba cualquier cosa en color, incluso de noche.**



The Wyze Cam Pan v2 illustrating its 360-degree rotational capability to cover an entire room.

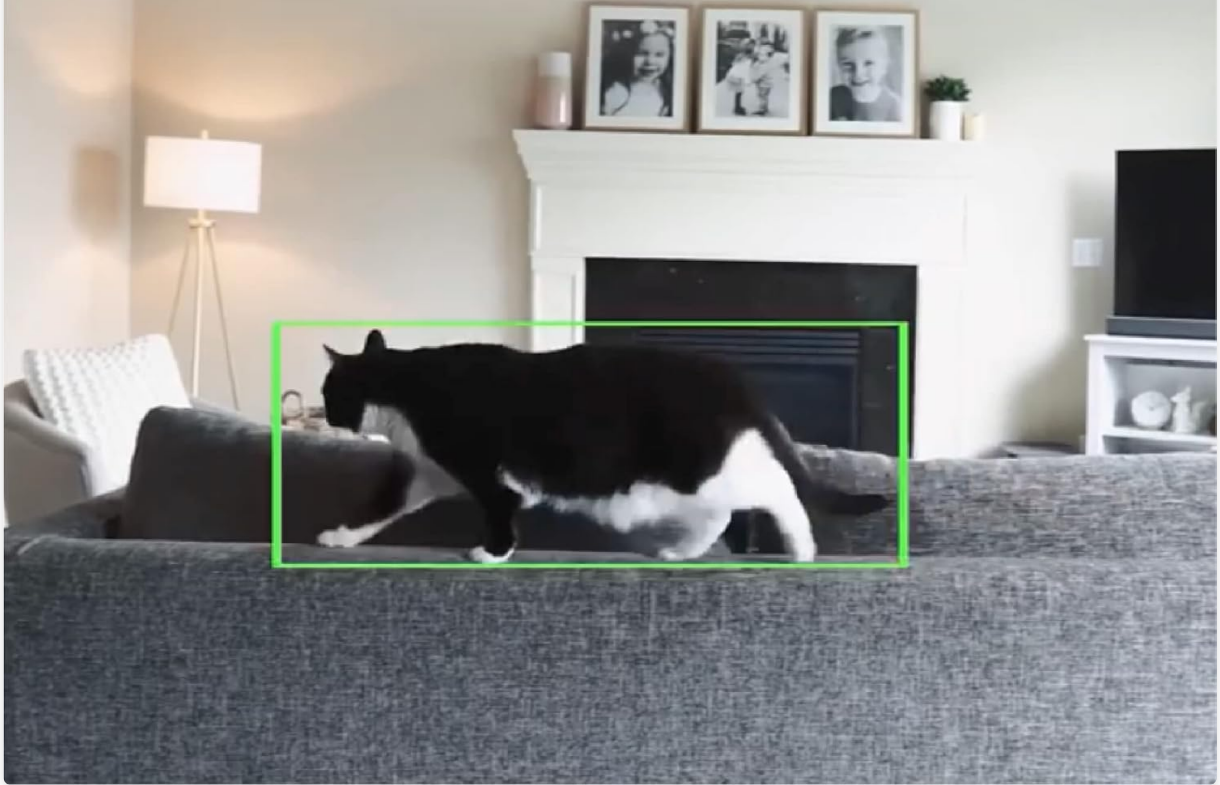
### 4.2 Color Night Vision

The Wyze Cam Pan v2 features Color Night Vision, enabled by a Starlight Sensor, which provides full-color video in low-light conditions. This enhances visibility compared to traditional black-and-white infrared night vision.

Rastreo de movimiento

---

# Detecta, etiqueta y rastrea automáticamente el movimiento en tiempo real



A visual comparison demonstrating the improved clarity and color provided by the Starlight Sensor in low-light conditions.

## 4.3 Two-Way Audio

Utilize the camera's built-in microphone and speaker to engage in two-way conversations. This feature allows you to speak to individuals near the camera or listen to sounds in the camera's environment directly through the Wyze app.



# Dimensiones

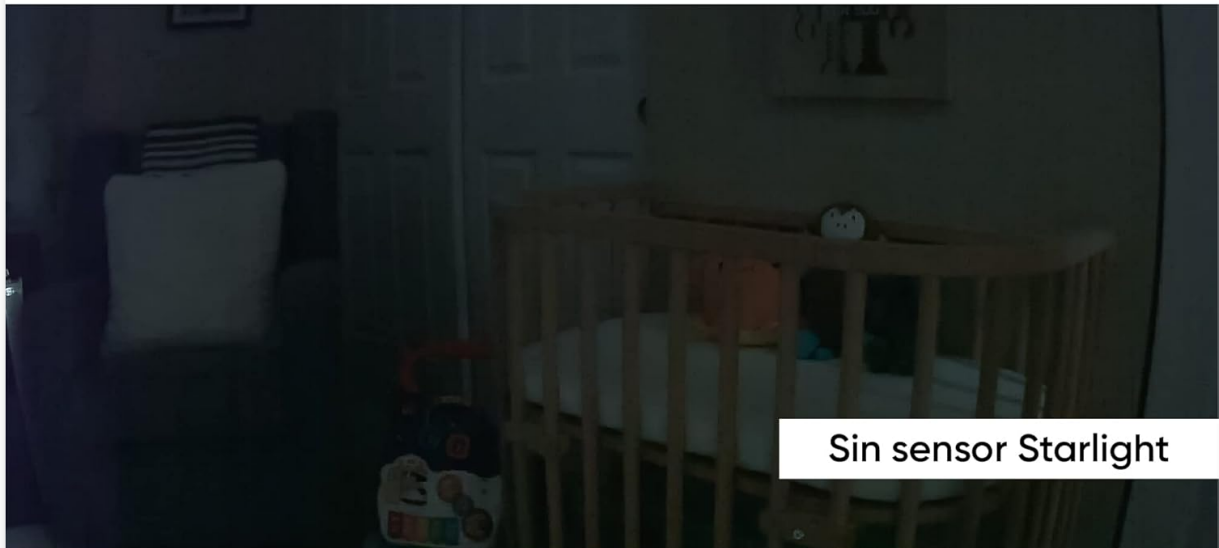


The Wyze Cam Pan v2 enabling two-way communication, illustrated by a user speaking to a pet.

## 4.4 Automatic Motion Tracking and Alerts

When enabled, the camera will automatically detect, track, and record movement within its field of view. You will receive instant notifications on your smartphone when motion is detected. Notification settings can be customized within the Wyze app.

**Graba cualquier cosa en color, incluso de noche.**



**Sin sensor Starlight**



**Con sensor Starlight**

The camera's motion tracking feature actively following a moving subject, indicated by a green tracking box.



Compatible con los asistentes inteligentes

## Utilice su voz para ver lo que ocurre en su hogar

*"Alexa, muéstrame la sala."*

*"Muy bien."*



works with | alexa

works with  
**Hey Google**

A smartphone displaying an instant notification from the Wyze app, indicating motion detection.

### 4.5 Smart Assistant Integration

The Wyze Cam Pan v2 is compatible with Amazon Alexa and Google Assistant. You can use voice commands to view your camera's live feed on compatible smart displays or devices.

Audio bidireccional

# Escuche y hable con sus seres queridos cuando no esté en casa



A smart display showing the live feed from the Wyze Cam Pan v2, demonstrating compatibility with voice assistants.

## 5. MAINTENANCE

- **Cleaning:** Use a soft, dry cloth to clean the camera lens and body. Avoid abrasive cleaners or solvents.
- **Firmware Updates:** Regularly check the Wyze app for available firmware updates. Keeping your camera's firmware up-to-date ensures optimal performance and security.
- **Placement:** Ensure the camera is placed on a stable surface or securely mounted to prevent accidental falls.

## 6. TROUBLESHOOTING

If you encounter issues with your Wyze Cam Pan v2, consider the following:

- **No Power:** Ensure the power cable is securely connected to both the camera and the power adapter, and the adapter is plugged into a working outlet.
- **Offline Status:** Check your Wi-Fi connection. Restart your router and the camera. If the issue persists, try re-pairing the camera through the Wyze app.
- **Poor Video Quality:** Ensure your Wi-Fi signal is strong where the camera is placed. Move the camera closer to your router or consider a Wi-Fi extender.

- **Motion Detection Issues:** Verify that motion detection is enabled in the Wyze app settings. Adjust sensitivity levels if necessary.
- **Pan/Tilt Not Responding:** Ensure the camera has completed its initial calibration. If it's stuck, try power cycling the device.

For further assistance, refer to the official Wyze support resources.

## 7. SPECIFICATIONS

360° de Cobertura

# Puede ver toda la habitación. Rápido.



Dimensional overview of the Wyze Cam Pan v2 camera.

Feature	Detail
Model Name	Cam Pan v2
Item Model Number	WYZECP2
Video Capture Resolution	1080p
Field Of View	360 Degrees (Pan)

Feature	Detail
Low Light Technology	Color Night Vision (Starlight Sensor)
Connectivity Technology	Wi-Fi (2.4 GHz)
Controller Type	Amazon Alexa, Google Assistant
Power Source	Corded Electric (110 Volts AC, 5 Watts)
Indoor/Outdoor Usage	Indoor
Dimensions (L x W x H)	5.5 x 3.5 x 3 inches
Item Weight	16 Ounces (1 pound)
Material	Glass (Lens)
Color	White

8. WARRANTY INFORMATION



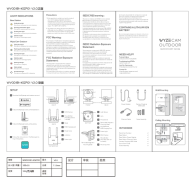
The Wyze Cam Pan v2 comes with a **1-year manufacturer's warranty**. Please retain your proof of purchase for warranty claims. For detailed terms and conditions, visit the official Wyze website.




9. SUPPORT

For additional support, frequently asked questions, or to contact customer service, please visit the official Wyze support page:

[Visit Wyze Support](#)

Related Documents - WYZECP2

	<p><a href="#">Wyze Cam Pan v2 Quick Start Guide</a></p> <p>This guide provides instructions for setting up and using the Wyze Cam Pan v2, including configuration, light indicators, and FCC compliance information.</p>
	<p><a href="#">Wyze Cam v3 Pro Quick Start Guide: Setup, Features, and Support</a></p> <p>Get started quickly with your Wyze Cam v3 Pro security camera. This guide provides essential information on setup, features, status light indicators, important warnings, and warranty details.</p>
	<p><a href="#">Wyze Cam Outdoor WVOD1B1-KSZP01 Quick Start Guide</a></p> <p>This Quick Start Guide provides essential setup instructions and product information for the Wyze Cam Outdoor WVOD1B1-KSZP01, a 1080p HD wire-free smart home camera with night vision and 2-way audio, compatible with Alexa and Google Assistant.</p>

	<p><a href="#">Wyze Cam Pan v3 Quick Start Guide</a></p> <p>A concise guide to setting up and using your Wyze Cam Pan v3, including setup instructions, light indicator meanings, and regulatory information.</p>
	<p><a href="#">Wyze Cam Pan v2 Quick Start Guide</a></p> <p>Get started quickly with your Wyze Cam Pan v2. This guide provides setup instructions, light indicator meanings, and important compliance information.</p>
	<p><a href="#">Wyze Cam v3 Quick Start Guide</a></p> <p>A concise guide to setting up and using the Wyze Cam v3, including unboxing contents, setup steps, light indicator meanings, and regulatory compliance information.</p>