

## Manuals+

[Q & A](#) | [Deep Search](#) | [Upload](#)

### Manuals.plus /

- › [GoolRC](#) /
- › GoolRC E88 RC Drone User Manual

## GoolRC E88

# GoolRC E88 RC Drone User Manual

Model: E88  
Brand: GoolRC

## 1. IMPORTANT SAFETY INFORMATION

---

Before operating the GoolRC E88 RC Drone, please read and understand all safety guidelines. Failure to follow these instructions may result in injury, damage to the drone, or property damage.

- Always operate the drone in open areas, away from people, animals, and obstacles.
- Do not fly near airports, power lines, or restricted airspace.
- Ensure the drone battery and remote controller batteries are fully charged before each flight.
- Keep fingers and loose clothing away from rotating propellers.
- Do not operate the drone in strong winds or adverse weather conditions.
- Adult supervision is recommended for younger users.

## 2. PRODUCT OVERVIEW

---

The GoolRC E88 is a foldable RC drone equipped with a 4K camera, designed for ease of use and portability. It features various intelligent flight modes to enhance your flying experience.



Image: The GoolRC E88 RC Drone in flight, showcasing its compact design and the remote controller with a smartphone for live video feed.

## Key Features:

- **4K HD Camera:** Captures high-resolution photos and videos from the sky.
- **Foldable Design:** Compact and easy to transport with included storage bag.
- **Gesture Control Mode:** Allows photo and video capture using hand gestures.
- **Trajectory Flight:** Draw a path on the screen, and the drone will follow it.
- **Headless Mode:** Simplifies control by eliminating the need to adjust the drone's orientation.
- **Altitude Hold:** Maintains a stable altitude for steady flight and photography.
- **One Key Take-off/Landing:** Simplifies starting and ending flights.
- **3D Flips:** Perform aerial stunts with a single button.



# 4K MOVIE CAMERA

## Folding body/module battery

Image: Close-up of the GoolRC E88 drone highlighting its 4K camera and foldable design with a module battery.

### 3. SETUP AND ASSEMBLY

---

#### 3.1 Package Contents

Verify that all items are present in the package:



1\* RC drone

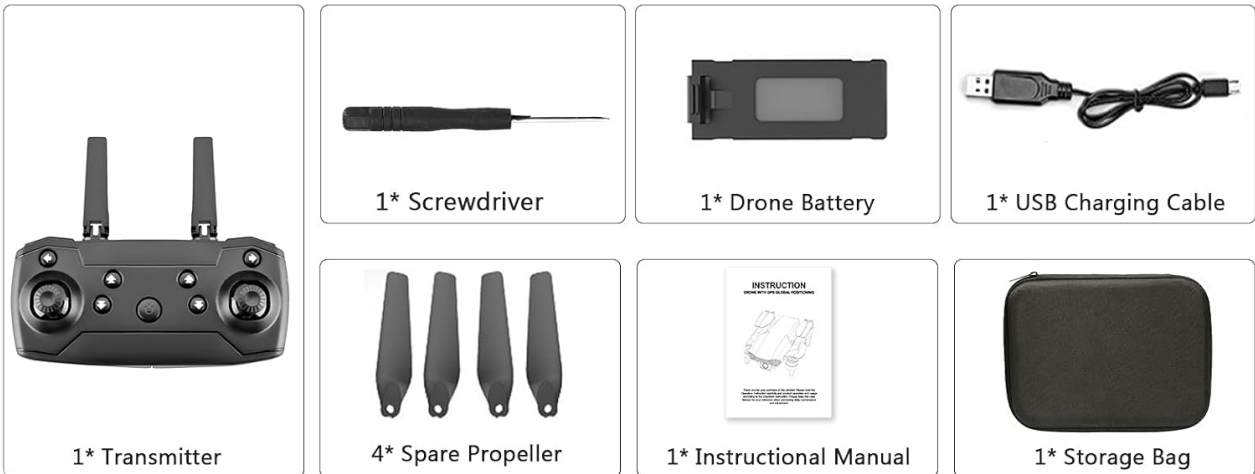


Image: An illustration of all components included in the GoolRC E88 RC Drone package.

- 1 x RC Drone
- 1 x Remote Controller
- 1 x Drone Battery (3.7V 1800mAh)
- 1 x USB Charging Cable
- 4 x Spare Propellers
- 1 x Screwdriver
- 1 x User Manual
- 1 x Storage Bag

### 3.2 Battery Installation and Charging

1. **Drone Battery:** Insert the provided 3.7V 1800mAh battery into the drone's battery compartment. Ensure it clicks securely into place.
2. **Charging the Drone Battery:** Connect the drone battery to the USB charging cable, then plug the USB cable into a 5V/1A USB power adapter (not included). The charging time is approximately 60 minutes. Do not leave charging batteries unattended.

3. **Remote Controller Batteries:** Open the battery compartment on the back of the remote controller. Insert 3 x AAA batteries (not included), observing correct polarity. Close the compartment.

### 3.3 Propeller Installation (if needed)

The drone's propellers are typically pre-installed. If replacement is necessary, use the included screwdriver to remove the old propellers and install new ones, ensuring they are correctly oriented (A and B propellers must match their respective motor arms).

### 3.4 App Download and Connection

1. Scan the QR code in the user manual or search for the designated app (e.g., 'WiFi\_CAM' or similar, refer to the included manual for the exact app name) on your smartphone's app store (Android 5.0+ or iOS 8.0+).
2. Install the app.
3. Turn on the drone.
4. Go to your phone's Wi-Fi settings and connect to the drone's Wi-Fi network (usually named 'WiFi\_CAM-XXXXXX').
5. Open the app to establish a connection and view the live camera feed.

### 3.5 Pairing and Calibration

1. Place the drone on a flat, level surface.
2. Turn on the drone, then turn on the remote controller.
3. Push the left joystick up then down to pair the remote with the drone. The drone's indicator lights will stop flashing and remain solid once paired.
4. Perform gyroscope calibration by pushing both joysticks to the bottom-right corner simultaneously until the drone lights flash rapidly and then become solid.

## 4. OPERATING INSTRUCTIONS

---

### 4.1 Basic Flight Controls

- **One Key Take-off/Landing:** Press the one-key take-off/landing button on the remote controller to automatically launch or land the drone.
- **Throttle (Left Joystick Up/Down):** Controls the drone's altitude.
- **Yaw (Left Joystick Left/Right):** Rotates the drone horizontally.
- **Forward/Backward (Right Joystick Up/Down):** Moves the drone forward or backward.
- **Sideward Flight (Right Joystick Left/Right):** Moves the drone left or right.
- **Speed Adjustment:** Use the speed button on the remote to cycle through different flight speeds (low, medium, high).

### 4.2 Intelligent Flight Modes

- **Headless Mode:** Activate Headless Mode to simplify flight direction. In this mode, the drone's front direction is irrelevant; it will move relative to the pilot's orientation.
- **Trajectory Flight:** Open the app, draw a desired flight path on your smartphone screen, and the drone will automatically follow this trajectory.

# THE TRAJECTORY INDICATES FLIGHT

## INTELLIGENT INTERESTING FLIGHT MODE

Open APP on trajectory's function; Trajectories of draw what you want to come  
It can fly automatically according to the flight path you said, without any distance  
Control operation, intelligent and fun!



Image: The GoolRC E88 drone executing a pre-drawn trajectory flight path.

- **3D Flips:** Press the 3D flip button on the remote controller, then push the right joystick in any direction to perform a 360-degree flip.

### 4.3 Camera Operation

- **4K HD Camera:** The integrated 4K camera captures high-quality photos and videos. Access the camera functions through the connected smartphone app.

# AUTOMATIC SHOOTING IN 4K

New aerial experience, your smart cameraman, with a limited cameraVolume, infinite imaginary space.



Image: The GoolRC E88 drone capturing automatic 4K footage, with a smartphone showing the live feed.

- **Gesture Control:** With the drone's camera facing you, perform specific hand gestures to trigger photo or video recording. Refer to the app interface for specific gesture recognition.

# SUPPORT GESTURE PHOTO / VIDEO

Intelligent identification, easy to control



Image: Examples of hand gestures for initiating photo and video recording with the drone's camera.

- **Real-time Video Transmission:** The drone transmits live video to your connected smartphone via Wi-Fi, allowing for first-person view (FPV) flying and real-time monitoring of your footage.

## REAL-TIME VIDEO TRANSMISSION

Through the mobile APP, the aerial pictures of the aircraft are fully controlled and watched. The image is transmitted clearly, so that you have the vision of migratory birds, easy to record everything.



Image: Real-time video transmission from the drone to a smartphone connected to the remote controller.

## 5. MAINTENANCE

---

Proper maintenance ensures the longevity and optimal performance of your GoolRC E88 RC Drone.

- **Cleaning:** After each flight, gently wipe the drone body with a soft, dry cloth to remove dust or debris. Avoid using water or harsh chemicals.
- **Propeller Inspection:** Regularly check propellers for any damage, cracks, or bends. Replace damaged propellers immediately using the spare parts and screwdriver provided.
- **Battery Care:** Store batteries in a cool, dry place. Do not overcharge or over-discharge batteries. If storing for extended periods, charge batteries to approximately 50% capacity.
- **Motor Care:** Keep motors free from dust and hair. Do not attempt to lubricate the motors.

## 6. TROUBLESHOOTING

---

If you encounter issues with your GoolRC E88 RC Drone, refer to the following common problems and solutions:

<b>Problem</b>	<b>Possible Cause</b>	<b>Solution</b>
Drone does not respond to remote.	Not paired or low battery.	Ensure drone and remote are powered on and paired correctly. Check and charge batteries.
Unstable flight or drifting.	Improper calibration or damaged propellers.	Perform gyroscope calibration on a flat surface. Inspect and replace damaged propellers.
No live video feed on smartphone.	Not connected to drone's Wi-Fi or app issue.	Verify phone is connected to the drone's Wi-Fi network. Restart the app and drone.
Short flight time.	Battery not fully charged or aging battery.	Ensure battery is fully charged. Consider replacing old batteries.
Drone fails to take off.	Low battery or propellers blocked.	Charge drone battery. Check for any obstructions preventing propeller rotation.

## 7. SPECIFICATIONS

---

Detailed technical specifications for the GoolRC E88 RC Drone:



5.3CM

12.5

(Folding state)



25CM

25CM

(Expanded state)



Image: Dimensions of the GoorRC E88 drone in both folded and expanded states.

Feature	Detail
Model Name	E88
Motor Type	Brushed Motor
Drone Battery	3.7V 1800mAh
Charging Time	Approximately 60 minutes
Flying Time	Approximately 13-15 minutes
Drone Weight	105g
Folded Dimensions	12.5 x 8.1 x 5.3 cm
Unfolded Dimensions	25 x 25 x 5.5 cm
Camera Resolution (Photo)	4096 x 2160P (4K)

Feature	Detail
Camera Resolution (Video)	1920 x 1080P (1080p)
Image Transmission Distance	Up to 50m
Remote Control Frequency	2.4G
Control Distance	Up to 150m (free interference, no occlusion)
Remote Controller Battery	3 x AAA batteries (not included)
Compatible APP System	Android 5.0 or above, iOS 8.0 or above

## 8. WARRANTY AND SUPPORT

---

For warranty information and customer support, please refer to the documentation included with your purchase or contact the seller directly. GoolIRC strives to provide quality products and assistance.

If you require technical support or have questions regarding your GoolIRC E88 RC Drone, please reach out to the retailer from whom you purchased the product or visit the official GoolIRC website for contact details.