

Jowua 480° Rotating Car Mount with 10W Wireless Charging

JOWUA 480° Rotating Car Mount with 10W Wireless Charging User Manual

For Tesla Model 3 & Model Y

INTRODUCTION

This manual provides detailed instructions for the installation, operation, and maintenance of your JOWUA 480° Rotating Car Mount with 10W Wireless Charging. This product is specifically designed for Tesla Model 3 and Model Y vehicles, offering a secure and convenient way to mount and charge your smartphone.

PRODUCT FEATURES

- **Patented 480° Rotation and Innovative Silicone Roller Design:** Features a 360° rotating ball joint and a 120° adjustable hinge, allowing for optimal viewing angles. The silicone roller design enables easy one-handed operation for placing and removing your device.
- **Adjustable Clamp Design:** Compatible with all mobile devices ranging from 4.7 to 6.5 inches, including iPhone 13 Pro Max, iPhone 13 Pro, iPhone 13, and other smartphones. The clamps adjust by pressing both sides and release quickly with a single top button.
- **High-Speed Wireless Charging:** Supports up to 10W output for Qi-compatible smartphones, including Apple iPhone and Samsung devices.
- **Strong and Washable Suction Cup:** Equipped with a super-adhesive gel and a washable suction cup that securely holds the device to the back of the Tesla screen without leaving residue.

SETUP AND INSTALLATION

1. **Prepare the Mounting Surface:** Ensure the back of your Tesla's screen is clean and dry before attaching the suction cup.



***Attention**

The charging coil of the cell phone must be match the charging coil of the car mount, then could be charging

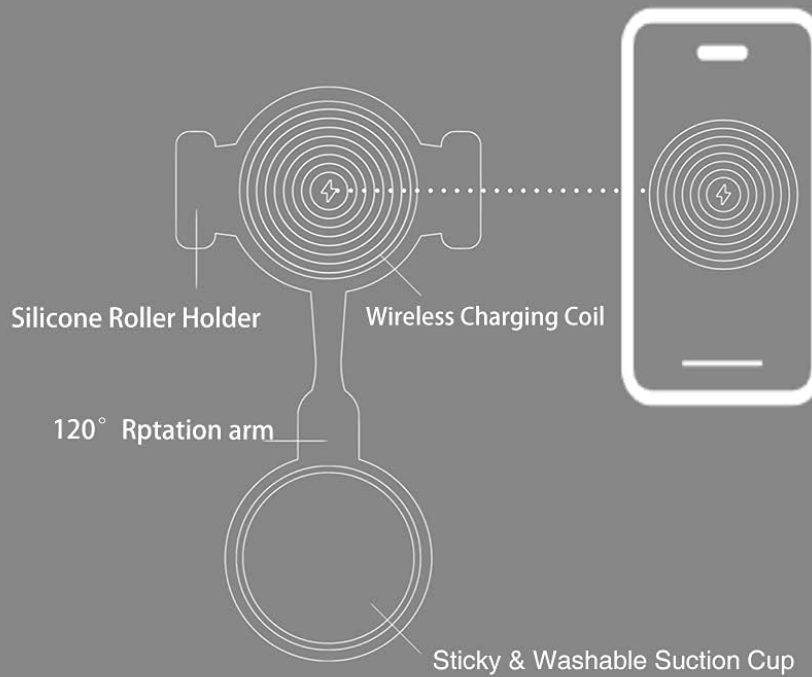
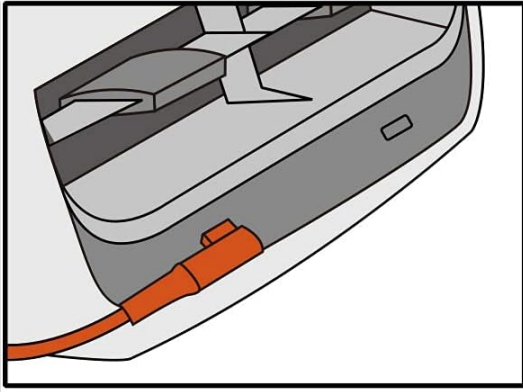


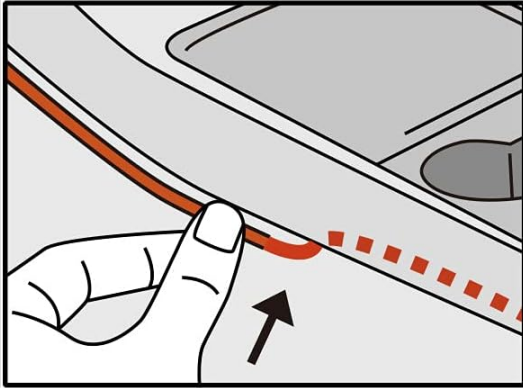
Image: The JOWUA car mount securely attached to the Tesla screen, holding a smartphone.

- 2. Attach the Mount:** Press the suction cup firmly against the desired location on the back of the Tesla screen. Ensure the lever on the suction cup base is engaged to create a strong vacuum seal.
- 3. Connect Power:** Locate the rear USB-C ports in your Tesla.



Plug the L-shaped connector into the rear USB-C ports.

** Please use the included adapter if you have USB-A ports.*



Tuck the cable into the side trim strip. Make sure the cable is hidden inside and doesn't fall out.

Image: Illustration of plugging the L-shaped USB-C connector into the rear USB-C port. Use the included adapter if your vehicle has USB-A ports.

- 4. Route the Cable:** Plug the L-shaped connector into the rear USB-C port. Carefully tuck the cable into the side trim strip of the console to keep it hidden and prevent it from falling out.

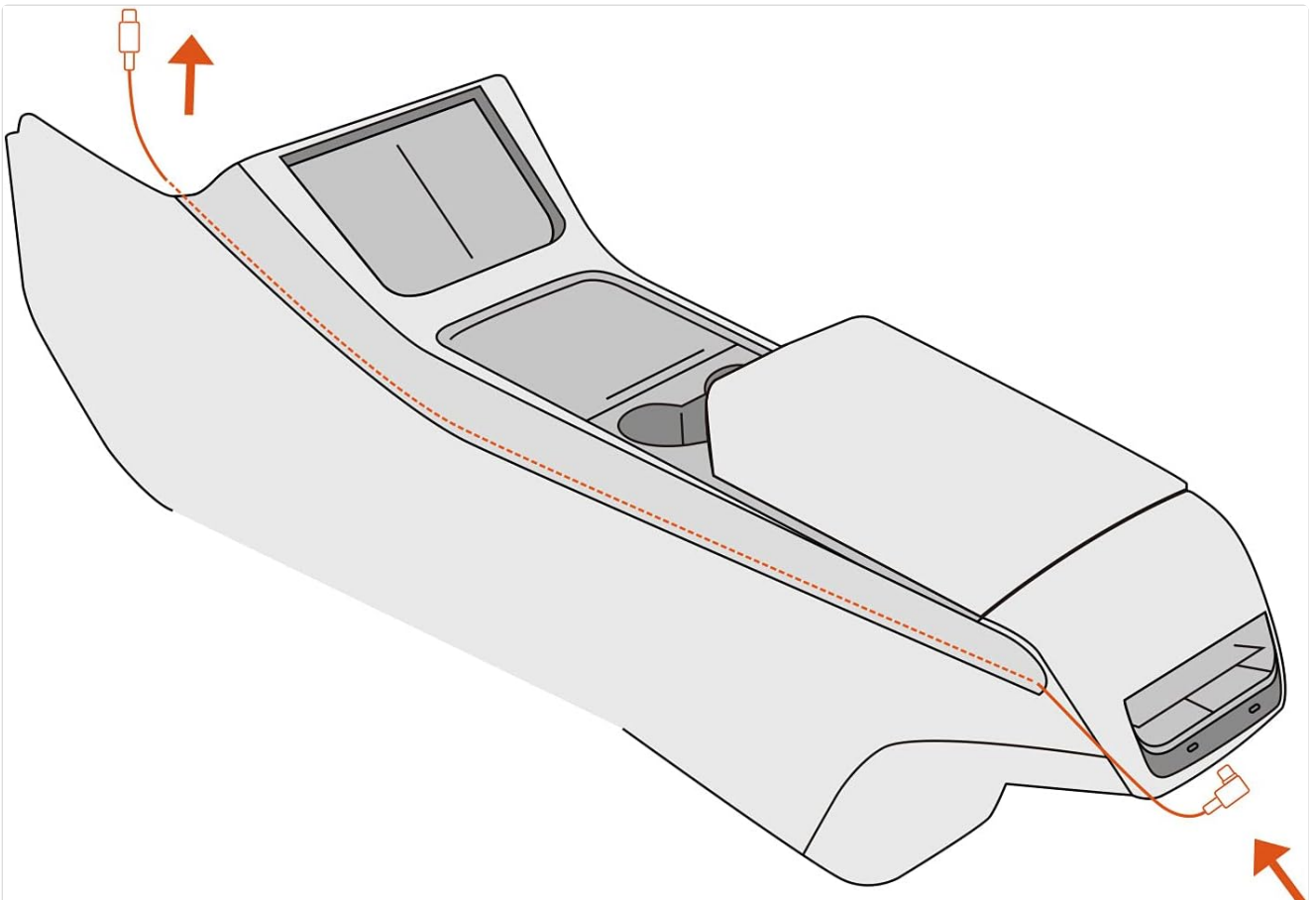


Image: Diagram showing the recommended cable routing path along the console trim.



Image: The power cable is discreetly routed behind the screen for a clean and organized appearance.

OPERATING INSTRUCTIONS

1. **Placing Your Phone:** Press both clamps inward to expand the holder. Place your smartphone into the holder and release the clamps. The silicone rollers will firmly grip your device.

**Innovative Silicone Roller Design
Easy operation, and firmly clamp your device.**



Image: The innovative silicone roller design ensures easy operation and a firm grip on your device.



Adjustable Clamps Design to Fit All Mobile Devices.

Image: The adjustable clamp design accommodates mobile devices with widths between 63mm and 90mm.

2. **Removing Your Phone:** Press the quick-release button located at the top of the mount to instantly release the clamps and retrieve your phone.
3. **Adjusting Viewing Angle:** Utilize the 360° rotating ball joint and 120° adjustable hinge to position your phone at the ideal viewing angle for navigation or other uses.



Tangle-free Design

Keep Your Phone for the Ideal Viewing Angle

Supports Fast Wireless Charging and Qi-enabled Phones, iPhone (include MagSafe series), Android Phone

Input: 5V=3A, 9V=2A

Output: 5W, 7.5W, 10W



Image: The mount's design allows for flexible positioning to achieve the ideal viewing angle, supporting fast wireless charging.

- 4. Wireless Charging:** Once your Qi-compatible phone is placed in the mount and the mount is powered, wireless charging will begin automatically. Ensure the charging coil of your phone aligns with the charging coil of the car mount for optimal performance.



***Attention**

The charging coil of the cell phone must be match the charging coil of the car mount, then could be charging

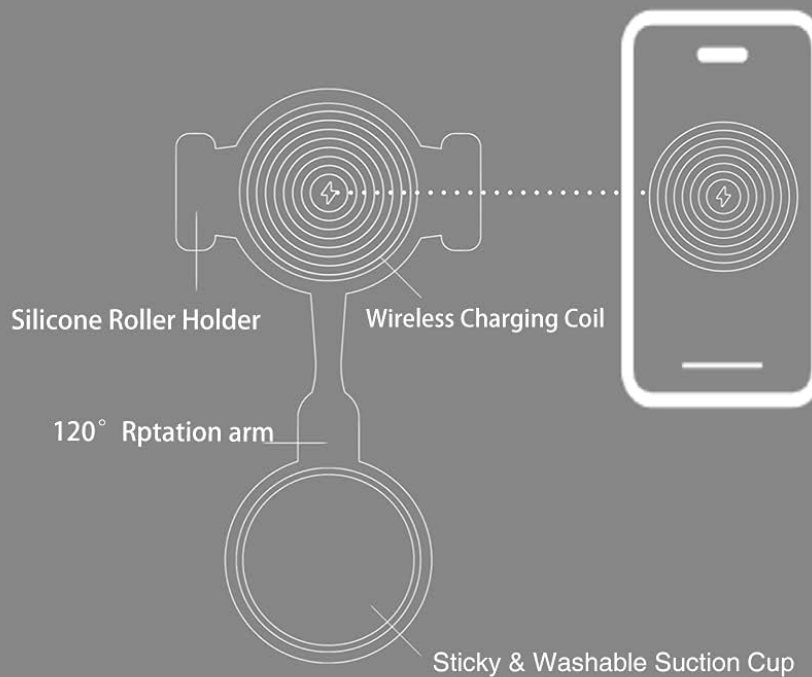


Image: Proper alignment of the phone's charging coil with the mount's charging coil is essential for successful wireless charging.

MAINTENANCE

- **Cleaning the Suction Cup:** If the suction cup loses its stickiness, rinse it with warm water and let it air dry. This will restore its adhesive properties.
- **General Cleaning:** Wipe the mount with a soft, damp cloth to remove dust and grime. Avoid using harsh chemicals or abrasive cleaners.

TROUBLESHOOTING

- **Mount Not Sticking:** Ensure the mounting surface is clean and dry. If the suction cup is dirty, clean it with water and let it air dry. Re-engage the suction cup lever firmly.
- **Wireless Charging Not Working:**
 - Verify your phone is Qi-compatible.
 - Ensure the phone's charging coil is properly aligned with the mount's charging coil.

- Check if the power cable is securely connected to both the mount and the vehicle's USB port.
- Ensure the vehicle's USB port is providing power.
- Remove any thick phone cases that might interfere with wireless charging.

- **Intermittent Charging:**

- Check the power cable for damage or loose connections.
- Ensure the phone is centered on the charging pad.
- Some phone models may not support fast wireless charging with all chargers; verify your phone's specifications.

SPECIFICATIONS

Brand	Jowua
Connector Type	Wireless
Compatible Devices	Smartphones (4.7-6.5 inches)
Compatible Phone Models	iPhone 13, iPhone 13 Pro, iPhone 13 Pro Max, other Qi-compatible smartphones
Special Features	Wireless Charging, 480° Rotation, Adjustable Clamp
Input Voltage	5 Volts
Output Voltage	5 Volts (DC)
Wattage	10 W (Max)
USB Ports	1
Power Source	Battery Powered (via vehicle's USB)
Main Power Connector Type	USB Type C
Material	Silicone
Item Weight	0.39 Kilograms

WARRANTY AND SUPPORT

JOWUA Inc. provides comprehensive customer service for its products. By registering your product, you can extend the standard 1-year warranty up to 4 years or 100,000 miles. For support or warranty claims, please contact JOWUA customer service through their official channels.

