

## Manuals+

[Q & A](#) | [Deep Search](#) | [Upload](#)

[manuals.plus](#) /

› [TESSAN](#) /

› [TESSAN Smart Power Strip User Manual](#)

## TESSAN TS-106S

# TESSAN Smart Power Strip User Manual

Brand: TESSAN | Model: TS-106S

## 1. INTRODUCTION

This user manual provides comprehensive instructions for the TESSAN Smart Power Strip (Model TS-106S). This device features 3 smart AC outlets, 3 always-on AC outlets, and 3 USB ports, designed to provide convenient power distribution and smart control for your electronic devices. It is compatible with Amazon Alexa and Google Home, allowing for voice control and remote management via the Smart Life application.



Figure 1: TESSAN Smart Power Strip (Model TS-106S)

## 2. KEY FEATURES

- **Voice Control:** Seamlessly integrate with Amazon Alexa and Google Home for hands-free control of connected devices.
- **APP Remote Control:** Manage your devices from anywhere using the Smart Life application on your smartphone. Supports 2.4GHz Wi-Fi networks only.
- **Schedule and Timer Setting:** Automate your devices to turn on/off at specific times, helping to conserve energy and reduce electricity costs.
- **Wall Mountable Design:** Features 2 keyholes on the back for easy installation on walls, workbenches, or under counters.
- **9-in-1 Functionality:** Includes 3 individually controllable smart AC outlets, 3 always-on AC outlets, and 3 USB ports (not smart, total 5V 3A output).
- **Enhanced Safety:** FCC certified, constructed from fireproof PC+ABS material, and equipped with built-in surge

protection to safeguard your equipment.

## Voice Control

"Alexa, turn on the fan"

"OK"

 Hey Google  amazon alexa

Figure 2: Voice Control with Alexa and Google Home

# Timer&Countdown

OFF PM 11:00

OFF PM 12:00



Figure 3: Timer and Countdown Functionality

## Wall Mountable Power Strip



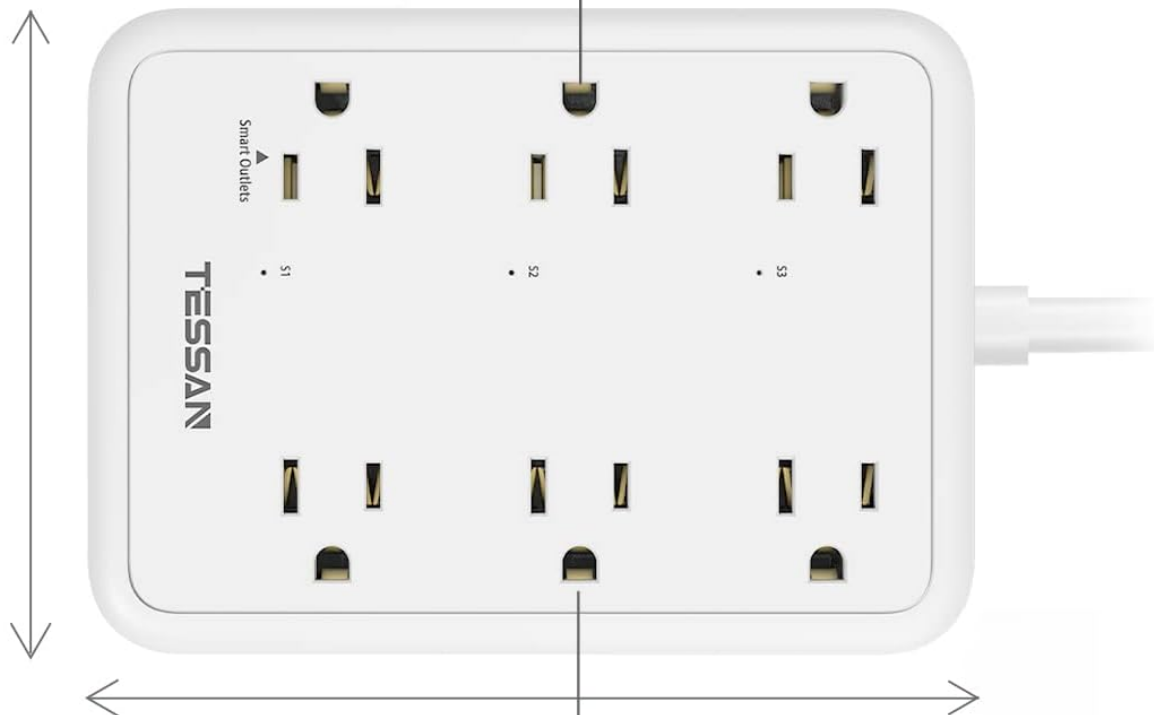
Figure 4: Wall Mountable Design

# 6 AC Outlets & 3 USB Ports

## 3 Smart Control Plugs

1.5 inch

1.5 inch



## 3 Always On Plugs

### Size

L : 5.43 in

W: 3.97 in

H: 1.1 in



## 3 USB Ports

(Not smart)

Figure 5: Outlet and Port Configuration

## 3. SETUP GUIDE

### 3.1. Connecting to Smart Life App

Follow these steps to connect your TESSAN Smart Power Strip to the Smart Life application:

1. Plug the smart power strip into a power outlet.
2. Download the **Smart Life** app from your device's app store (available on iOS and Android).
3. Open the Smart Life app and register or log in to your account.
4. Press and hold the power button on the smart power strip until the indicator light blinks rapidly (this indicates

pairing mode).

5. In the Smart Life app, tap the "+" icon in the top right corner or select "Add Device". The app should automatically discover the power strip.
6. Confirm the device and enter your 2.4GHz Wi-Fi network password. **Note: This smart power strip only supports 2.4GHz Wi-Fi.**
7. Wait for the connection process to complete. Once connected, you can rename the device and individual smart outlets within the app.

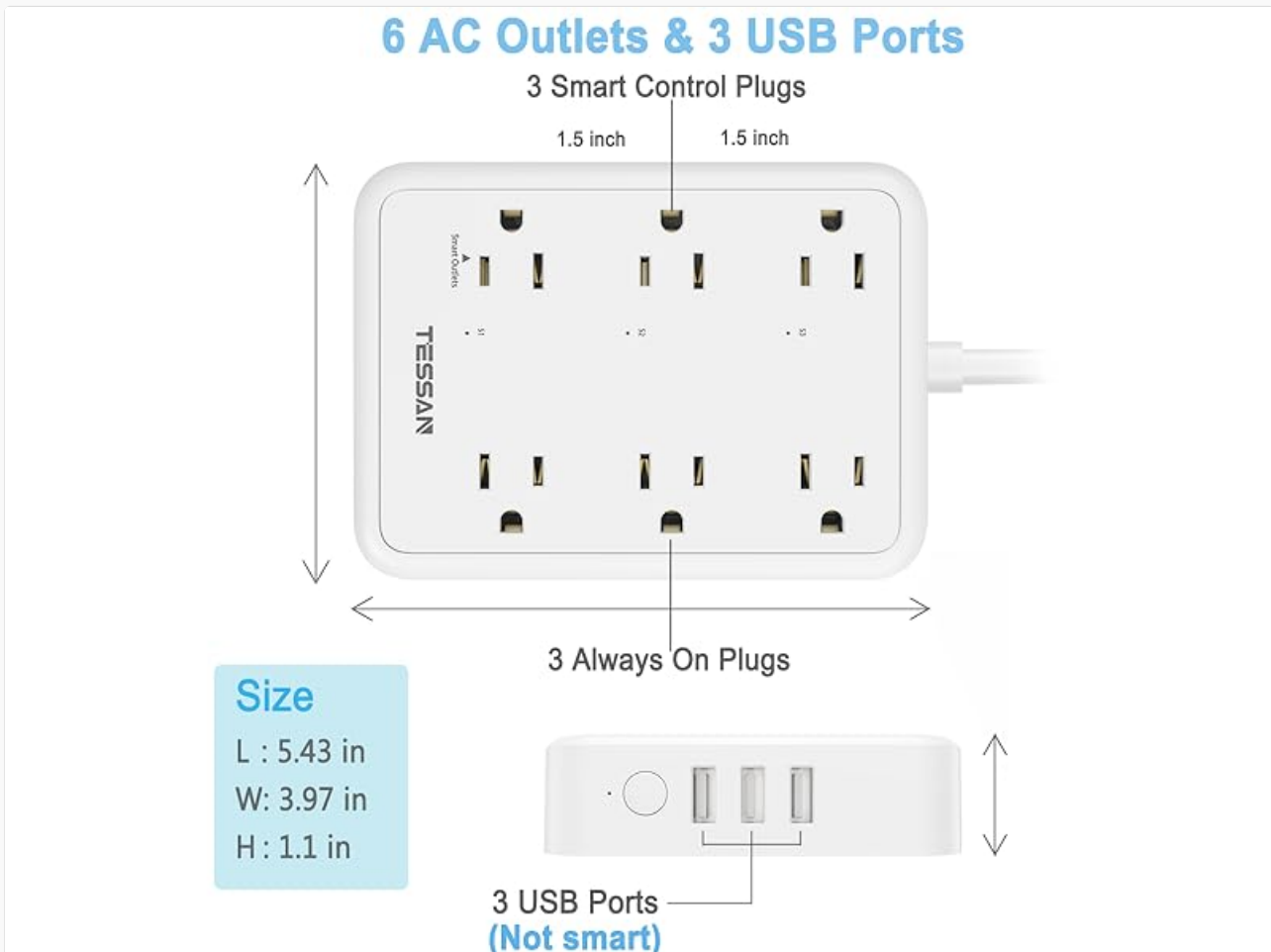


Figure 6: Smart Life App Connection Steps

### 3.2. Integrating with Voice Assistants (Alexa & Google Home)

After successfully connecting your power strip to the Smart Life app, you can link it with Amazon Alexa or Google Home for voice control.

#### For Amazon Alexa:

1. Open the Smart Life app, go to the 'Me' tab, and select 'Third-Party Voice Services'.
2. Choose 'Alexa' and follow the instructions to link your Smart Life account with your Amazon Alexa account.
3. Open the Amazon Alexa app. Go to 'Devices' and tap the '+' icon to 'Add Device'.
4. Select 'Plug' or 'Power Strip' and then 'Smart Life'. Follow the prompts to discover devices.
5. Once discovered, you can assign names to individual smart outlets (e.g., 'Living Room Lamp', 'Fan') for easier voice control.

#### For Google Home:

1. Open the Smart Life app, go to the 'Me' tab, and select 'Third-Party Voice Services'.

2. Choose 'Google Assistant' and follow the instructions to link your Smart Life account with your Google Home account.
3. Open the Google Home app. Tap the 'Add' button ('+') and then 'Set up device' > 'Works with Google'.
4. Search for 'Smart Life' and link your account.
5. Your smart power strip and its individual outlets will appear in the Google Home app, ready for voice commands.

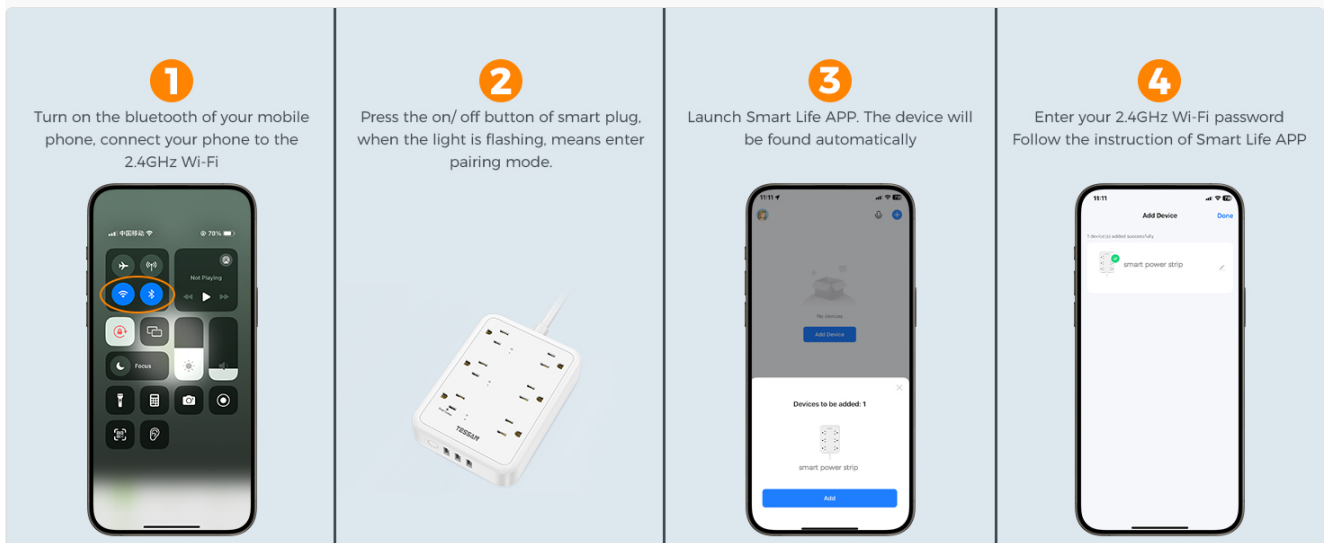


Figure 7: Google Home Integration Steps

### 3.3. Setup Video Tutorial

*Video 1: How to connect to Smart Life APP and Alexa?*

*This video provides a visual guide on connecting your TESSAN Smart Power Strip to the Smart Life app and integrating it with Amazon Alexa.*

## 4. OPERATING INSTRUCTIONS

### 4.1. Using the Smart Life App

The Smart Life app allows for comprehensive control over your power strip:

- **Individual Outlet Control:** Turn each of the 3 smart AC outlets on or off independently.
- **Scheduling:** Set daily or weekly schedules for your smart outlets to automatically power on or off.
- **Timer Function:** Set a countdown timer for an outlet to turn off after a specified duration.
- **Device Sharing:** Share control of the power strip with family members through the app.

# Control From Anywhere

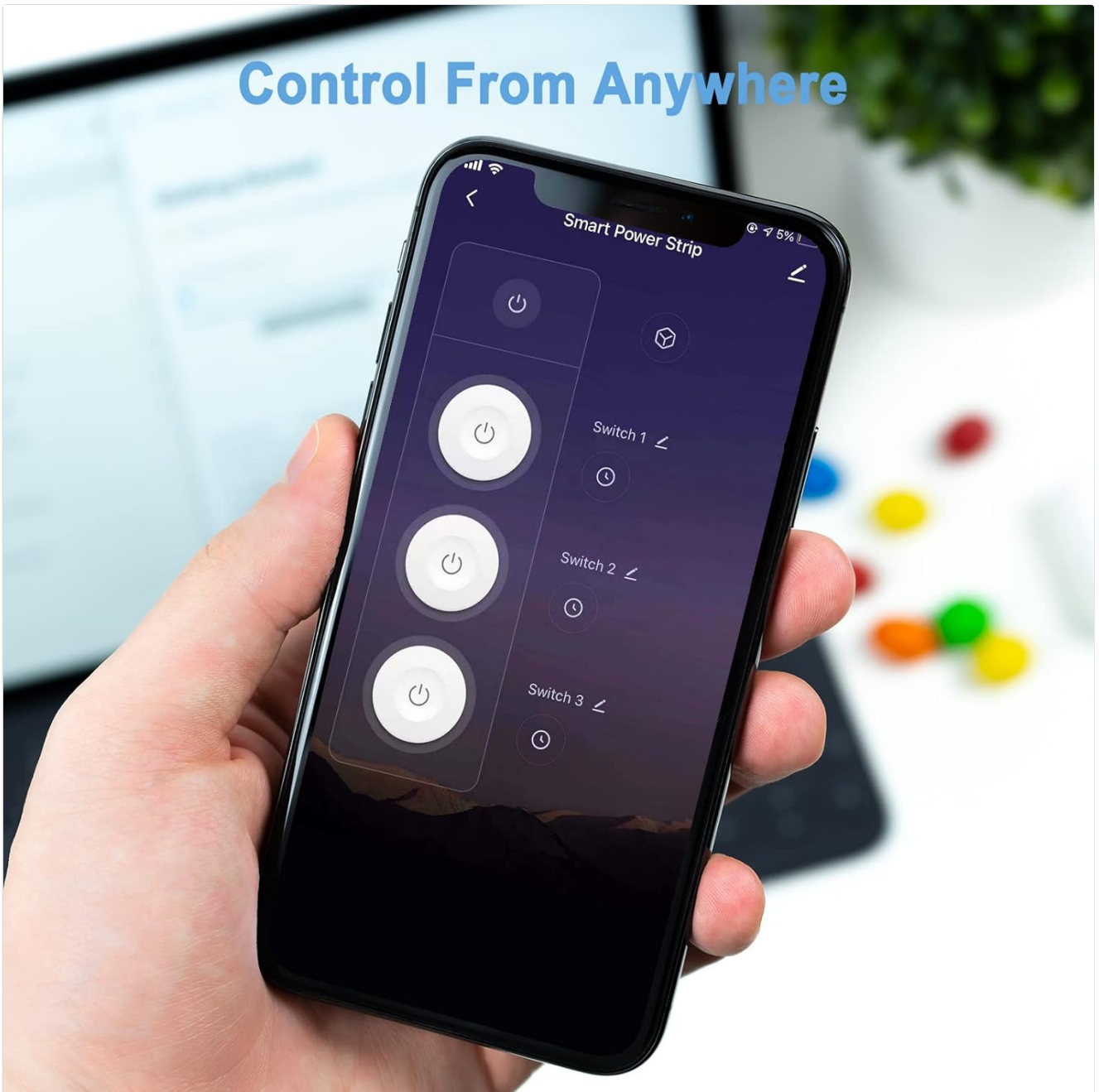


Figure 8: Remote Control via Smart Life App

## 4.2. Voice Control

Once linked with Alexa or Google Home, you can use simple voice commands:

- "Alexa, turn on the living room lamp."
- "Hey Google, turn off the fan."
- "Alexa, set the bedroom light to 7 PM." (Requires setting up routines in the Alexa app)



Figure 9: Family using Voice Control

## 5. MAINTENANCE

To ensure optimal performance and longevity of your TESSAN Smart Power Strip, follow these maintenance guidelines:

- **Cleaning:** Disconnect the power strip from the wall outlet before cleaning. Use a soft, dry cloth to wipe the surface. Do not use liquid cleaners or abrasive materials.
- **Storage:** When not in use for extended periods, store the power strip in a cool, dry place away from direct sunlight and moisture.
- **Inspection:** Periodically check the power cord and the power strip for any signs of damage, such as frayed wires or cracks. If damage is found, discontinue use immediately.

## 6. TROUBLESHOOTING

If you encounter issues with your TESSAN Smart Power Strip, refer to the following common problems and solutions:

Problem	Possible Cause	Solution
Device cannot connect to Wi-Fi.	Incorrect Wi-Fi band (not 2.4GHz), wrong password, weak signal, device not in pairing mode.	Ensure your Wi-Fi network is 2.4GHz. Verify the Wi-Fi password. Move the power strip closer to the router. Re-enter pairing mode by holding the power button until the light blinks rapidly.
Smart outlets are not responding to app/voice commands.	Device offline, app/voice assistant not linked correctly, power strip not receiving power.	Check if the power strip is plugged in and powered on. Verify its status in the Smart Life app. Re-link the Smart Life account with Alexa/Google Home if necessary.
USB ports are not charging devices.	Device not compatible, cable issue, power strip not powered.	Ensure the power strip is powered on. Try a different USB cable or device. Note that USB ports are not smart and are always on when the power strip is plugged in.

Problem	Possible Cause	Solution
Indicator light is not blinking during pairing.	Button not held long enough, device malfunction.	Press and hold the power button for 5-10 seconds until the light blinks rapidly. If it still doesn't blink, try unplugging and re-plugging the device.

## 7. SPECIFICATIONS

Attribute	Value
Product Dimensions	5.43 x 3.97 x 1.1 inches
Item Weight	1.04 pounds
Model Number	TS-106S
Brand	TESSAN
Color	White
Total Power Outlets	9 (3 Smart AC, 3 Always-On AC, 3 USB)
Voltage	125V
Special Features	Surge Protection, Mountable, App and Voice Controlled, Fireproof Material, USB Slot
Wi-Fi Compatibility	2.4 GHz only

## 8. WARRANTY AND SUPPORT

For detailed warranty information and customer support, please refer to the documentation included with your product packaging or visit the official TESSAN website. Contact information for technical assistance and warranty claims can typically be found there.