

ZVOX SB500

ZVOX SB500 Soundbar User Manual

Model: SB500 | Brand: ZVOX

INTRODUCTION

Welcome to the user manual for your ZVOX SB500 Soundbar. This high-performance soundbar is designed to deliver an immersive audio experience for your television, featuring advanced AccuVoice dialogue boost technology and powerful built-in subwoofers. The SB500 is engineered to enhance clarity and provide rich, room-filling sound, making every movie, show, and sporting event come to life. Please read this manual thoroughly to ensure proper setup, operation, and maintenance of your device.



Figure 1: Front view of the ZVOX SB500 Soundbar. This sleek black soundbar features a minimalist design with a subtle ZVOX logo at the bottom center.

SETUP

Placement Options

The ZVOX SB500 Soundbar offers versatile placement options to suit your home entertainment setup. It can be wall-mounted, placed upright, or laid flat on furniture. This flexibility ensures optimal sound delivery and seamless integration with your room's aesthetics.

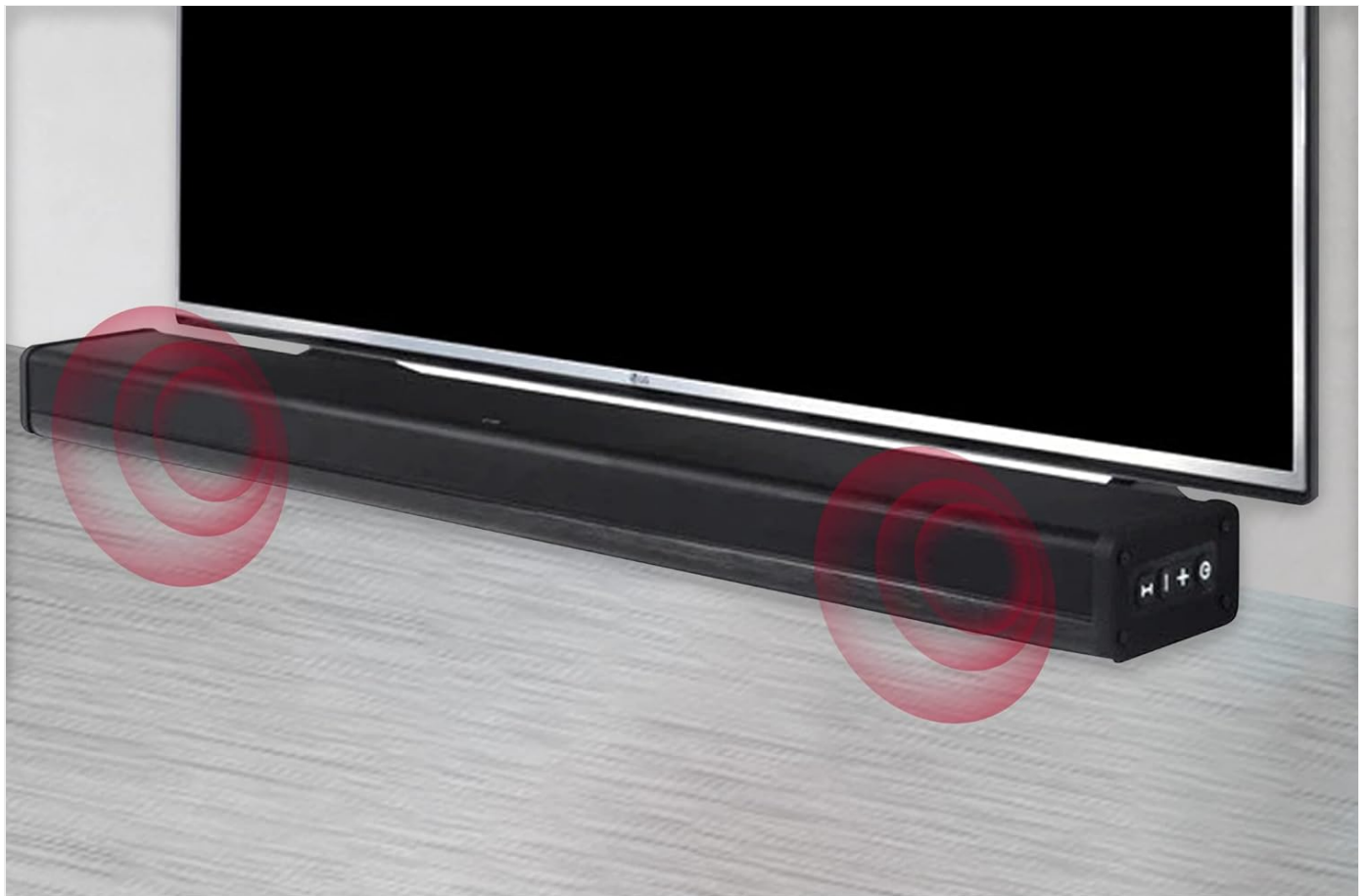


Extraordinary Sound Bar

It combines three "insanely great" speakers, two internal powered subwoofers, a 140-watt digital amplifier, an aluminum cabinet, and a digital processor.

ZVOX®

Figure 2: The ZVOX SB500 Soundbar positioned on a TV stand beneath a television, demonstrating a common horizontal placement.



IMMERSIVE SOUND

EASY-TO-INSTALL

Can be wall-mounted, furniture-mounted, or laid flat.

Figure 3: A visual representation of sound waves emanating from the ZVOX SB500 Soundbar, illustrating its immersive audio capabilities when placed under a TV.



Dual Built-in Subwoofers

Produce great bass without an external subwoofer.



6-Modes of AccuVoice

uses hearing aid technology to reduce background noise and boost voices for ultra clear dialogue.



THEATER-LIKE AUDIO QUALITY

The ZVOX SB500 is a sleek, elegant sound bar that fits under your TV to deliver room-filling 3D sound with great bass response from a single speaker cabinet.

Figure 4: The ZVOX SB500 Soundbar with its dimensions (49.9\"W x 3.3\"D x 5.7\"H) and key features highlighted, including dual built-in subwoofers and 6 modes of AccuVoice.

Connecting Your Soundbar

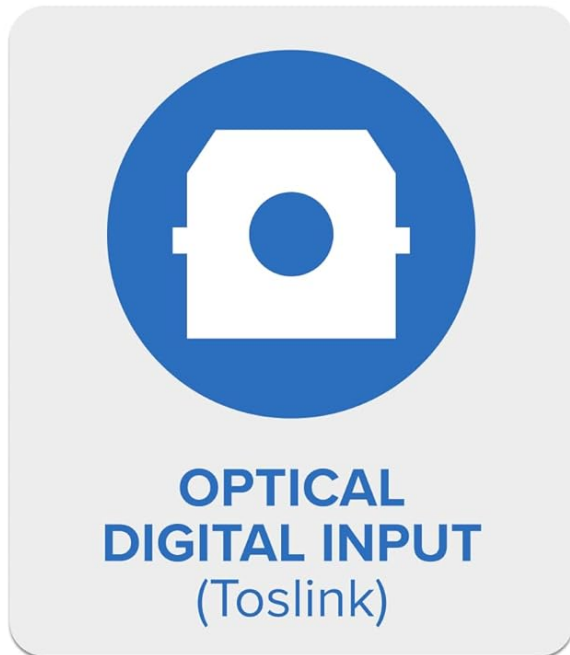
The SB500 Soundbar offers two primary ways to connect to your television or other audio sources:

- **Optical Digital Input (TOSLINK):** For high-quality digital audio connection.
- **Analog Input (3.5mm Headphone Jack):** For connecting devices with an analog audio output.

Note: This product does not include an HDMI connection. Please check your TV for compatibility with optical or analog audio outputs.

TWO EASY WAYS TO CONNECT

This product features optical and analog inputs. It does not include a HDMI connection. It cannot be used as a center speaker. **Check your TV for compatibility.**



No HDMI

Figure 5: Diagram illustrating the optical digital input (TOSLINK) and analog input (3.5mm) options on the ZVOX SB500 Soundbar, with a clear indication that HDMI is not supported.

Initial Power On

Once connected, plug the soundbar into a power outlet. The soundbar will typically power on automatically or can be turned on using the included remote control. Follow the on-screen prompts on your TV (if any) to select the correct audio output.

OPERATING INSTRUCTIONS

Basic Controls

The ZVOX SB500 Soundbar can be controlled using the included remote control. Key functions include:

- **Power:** Turns the soundbar on or off.
- **Volume Up/Down:** Adjusts the overall sound level.
- **Mute:** Silences the audio output.
- **Input Selection:** Switches between Optical and Analog inputs.



Figure 6: Side view of the ZVOX SB500 Soundbar, showing the integrated control buttons for power, volume, and input selection.

AccuVoice Dialogue Boost

Experience every word with perfect clarity using ZVOX's patented AccuVoice hearing aid technology. This feature lifts voices out of background noise, making dialogue clear and easy to understand, even at low volumes. The SB500 offers six levels of voice boost, allowing you to customize your listening experience.

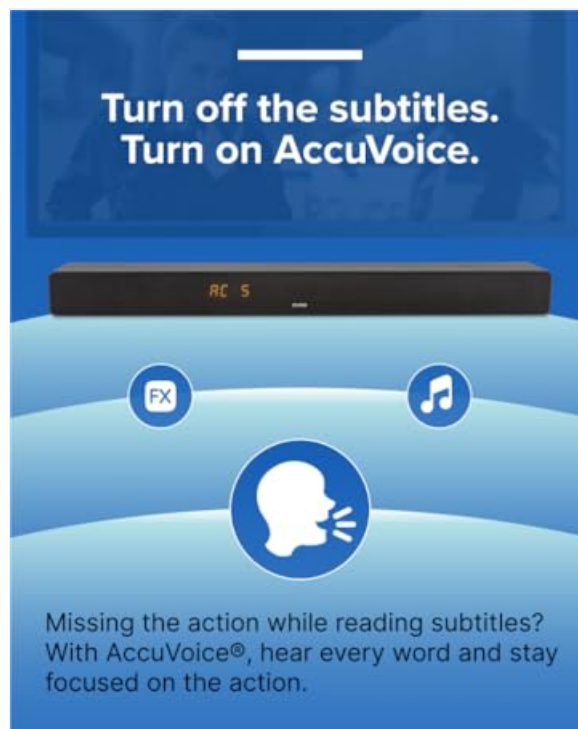


Figure 7: The ZVOX SB500 Soundbar display showing "AC S" (AccuVoice Setting), emphasizing the ability to turn off subtitles and turn on AccuVoice for enhanced dialogue clarity.



Figure 8: The AccuVoice logo, representing the patented technology for clear dialogue.

PhaseCue Virtual Surround Sound

The SB500 features PhaseCue virtual surround sound technology, which creates a rich and immersive 3D sound experience from a single soundbar. This technology broadens the soundstage, making it feel like sound is coming from all around you.

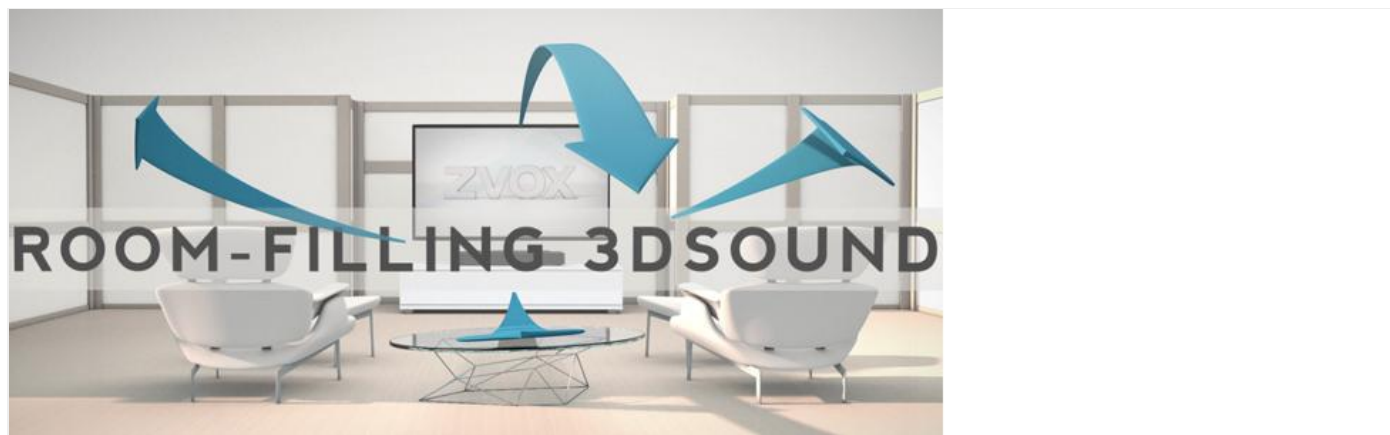
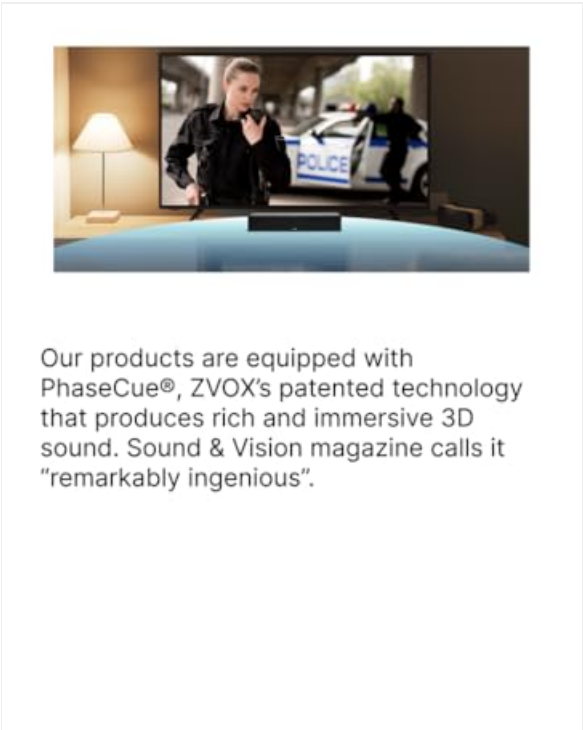


Figure 9: A graphic illustrating how the ZVOX SB500 Soundbar creates room-filling 3D sound, with arrows indicating sound dispersion throughout a living space.



Our products are equipped with PhaseCue®, ZVOX's patented technology that produces rich and immersive 3D sound. Sound & Vision magazine calls it "remarkably ingenious".

Figure 10: The ZVOX SB500 Soundbar integrated into a home entertainment setup, demonstrating its ability to deliver immersive audio for dynamic content like action scenes.

Output Leveling

The SB500's output leveling feature automatically tames sudden volume spikes, such as those from loud commercials. This provides a consistent audio experience, eliminating the need to constantly adjust the volume.



Figure 11: An image depicting a woman covering her ears, symbolizing the discomfort caused by sudden loud noises, which the soundbar's

MAINTENANCE

Cleaning

To maintain the appearance and performance of your ZVOX SB500 Soundbar, regularly wipe the exterior with a soft, dry cloth. Avoid using abrasive cleaners, waxes, or solvents as they may damage the finish. Ensure the soundbar is unplugged before cleaning.

Storage

If storing the soundbar for an extended period, disconnect it from power and audio sources. Store it in a cool, dry place, ideally in its original packaging to protect it from dust and physical damage.

TROUBLESHOOTING

If you encounter issues with your ZVOX SB500 Soundbar, please refer to the following common problems and solutions:

Problem	Possible Cause	Solution
No sound from soundbar.	<ul style="list-style-type: none">Soundbar not powered on.Incorrect input selected.Volume too low or muted.Loose audio cables.TV audio output settings incorrect.	<ul style="list-style-type: none">Ensure soundbar is plugged in and powered on.Press the Input button on the remote to cycle through inputs.Increase volume and check mute status.Securely connect all audio cables.Check your TV's audio settings to ensure output is set to external speakers (e.g., Optical Out).
Distorted or poor sound quality.	<ul style="list-style-type: none">Audio source quality.Cables not fully inserted.Soundbar placement.	<ul style="list-style-type: none">Test with a different audio source.Ensure all cables are firmly connected.Adjust soundbar placement to avoid obstructions.
Remote control not working.	<ul style="list-style-type: none">Dead batteries.Obstruction between remote and soundbar.	<ul style="list-style-type: none">Replace batteries (1 12V battery required).Ensure clear line of sight to the soundbar's sensor.

If the problem persists after trying these solutions, please contact ZVOX customer support.

SPECIFICATIONS

Feature	Detail
Model Name	SB500
Brand	ZVOX
Product Dimensions	3.3"D x 43.9"W x 5.7"H
Item Weight	12.6 Pounds
Speaker Type	Surround Sound, Subwoofer, 3D, Woofer, Soundbar

Feature	Detail
Speaker Maximum Output Power	140 Watts
Subwoofer Diameter	4 Inches (Dual Built-in)
Connectivity Technology	Wi-Fi (for multi-zone integration), Wired (Optical, Analog)
Special Features	AccuVoice, Disappearing Display, Output Leveling, PhaseCue
Compatible Devices	Television
Included Components	Remote
Power Source	DC
Controller Type	Remote Control
Number of Power Levels (AccuVoice)	6
UPC	882360050020

WARRANTY AND SUPPORT

Warranty Information

The ZVOX SB500 Soundbar comes with a **Limited Warranty**. For specific details regarding the terms and conditions of your warranty, including coverage period and what is covered, please refer to the warranty card included with your product or visit the official ZVOX website.

Customer Support

For further assistance, technical support, or inquiries regarding your ZVOX SB500 Soundbar, please visit the official ZVOX website or contact their customer service department.

[Visit ZVOX Official Website](#)





ZVOX SoundBase and Soundbar Bluetooth Audio Guide

Learn how to connect your ZVOX SoundBase or Soundbar to Bluetooth-enabled devices for wireless audio streaming. This guide provides step-by-step instructions and troubleshooting tips.

lang:en score:57 filesize: 821.29 K page_count: 1 document date: 2016-02-18

[pdf] User Manual Quick Start Guide Instructions Guide

ZVOX SB500 SB700 Soundbar Shopify User Manual Quick Setup Guide 2 Connect The Power Bluetooth

700 released for production 121919 cdn shopify s files 1 1837 7737

ZVOX **SB500**/SB700 Soundbar SETUP OPERATION Face Front Face Up Wall Mount zvox.com READ THIS FIRST Important Safety Instructions For ZVOX Audio System WARNING TO PREVENT FIRE OR SHOCK HAZARD, DO NOT EXPOSE THIS APPLIANCE TO RAIN OR MOISTURE. THIS APPLIANCE SHALL NOT BE EXPOSED TO DRIPPING OR S...

lang:en score:52 filesize: 1.35 M page_count: 12 document date: 2019-12-19

[pdf] Guide

Doug Webber Click here to SB380 SB500 SB700 Remote Learning Guide Manuals ZVOX Audio learning process for the 380 500 700 v 1584023973 cdn shopify s files 1 1837 7737 |||

Remote learning process for the SB380, **SB500** SB700: First, make sure that the Speaker is first powered OFF . Press and hold down the OTHER SETTINGS PS button on the ZVOX remote control for five seconds until you see Lrn appear on the display. Release the OTHER SETTINGS PS button when you se...

lang:en score:48 filesize: 201.26 K page_count: 2 document date: 2020-03-12

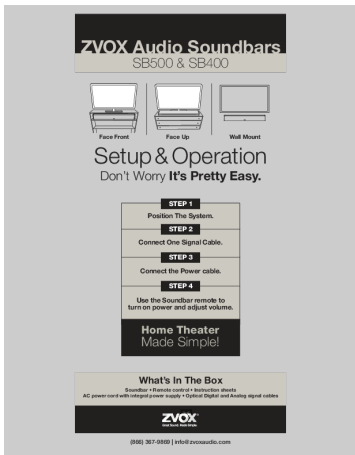
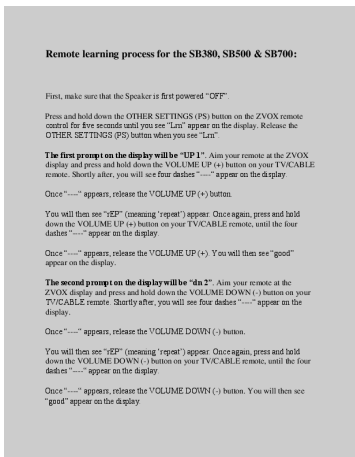
[pdf] User Manual Instructions

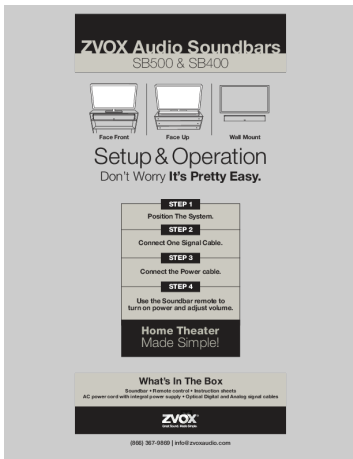
Provided by ManualsAndMore Download User Manual Zvox Audio SB500 Setup Operation

manualsandmore |||

ZVOX Audio Soundbars **SB500** SB400 Face Front Face Up Wall Mount Setup Operation Don t Worry It s Pretty Easy. STEP 1 Position The System. STEP 2 Connect One Signal Cable. STEP 3 Connect the Power cable. STEP 4 Use the Soundbar remote to turn on power and adjust volume. Home Theater Made Sim...

lang:en score:47 filesize: 1.38 M page_count: 14 document date: 2019-07-24





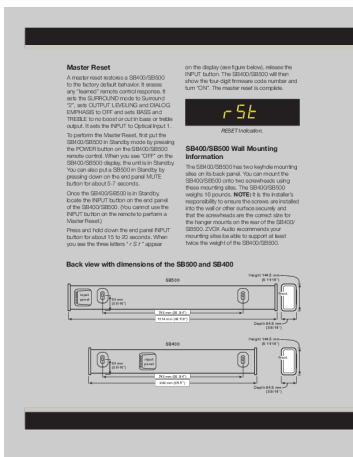
[\[pdf\]](#) User Manual Owner's Manual Instructions

ZVOX SB400 SB500 Manual JOSH N SoundBar owner s manual Powered home theater sound bar with Bluetooth® at Crutchfield 729SB500 crutchfieldonline ImageBank v20171107152200 Manuals 729 ||| ZVOX Audio Soundbars **SB500** SB400 Face Front Face Up Wall Mount Setup Operation Don t Worry It s Pretty Easy. STEP 1 Position The System. STEP 2 Connect One Signal Cable. STEP 3 Connect the Power cable. STEP 4 Use the Soundbar remote to turn on power and adjust volume. Home Theater Made Sim... lang:en score:46 filesize: 1.33 M page_count: 14 document date: 2017-11-07



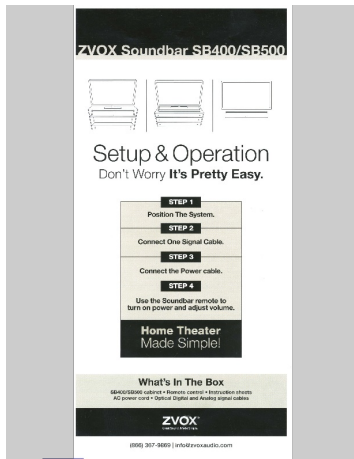
[\[pdf\]](#) User Manual Instructions

SB500 700 Ma SB700 2 0 Sound bar User Manual 6 Levels ZVOX Audio 48252153877 support zvox helpdesk attachments ||| ZVOX **SB500**/SB700 Soundbar SETUP OPERATION Face Front Face Up Wall Mount zvox.com READ THIS FIRST Important Safety Instructions For ZVOX Audio System WARNING TO PREVENT FIRE OR SHOCK HAZARD, DO NOT EXPOSE THIS APPLIANCE TO RAIN OR MOISTURE. THIS APPLIANCE SHALL NOT BE EXPOSED TO DRIPPING OR S... lang:en score:45 filesize: 1.39 M page_count: 12 document date: 2022-06-24



[\[pdf\]](#)

Click here to SB400 SB500 Adjustment options Manuals ZVOX Audio Soundbar Options Aug 2016 4310435704112617126 cdn shopify s files 1 1837 7737 ||| Master Reset A master reset restores a SB400/**SB500** to the factory default behavior. It erases any learned remote control response. It sets the SURROUND mode to Surround 2 , sets OUTPUT LEVELING and DIALOG EMPHASIS to OFF and sets BASS and TREBLE to no boost or cut in bass or treble output. It set... lang:en score:40 filesize: 304.36 K page_count: 4 document date: 2017-03-20



[\[pdf\]](#) User Manual Instructions

Provided by ManualsAndMore Download User Manual Zvox Audio SB400 Setup Operation manualsandmore |||

Setup Operation Don t Worry It s Pretty Easy. STEP 1 Position The System. STEP2 Connect One Signal Cable. STEP3 Connect the Power cable. STEP4 Use the Soundbar remote to turn on power and adjust volume. Home Theater Made Simple What s In The Box SB400/**SB500** cabinet Remote control Instruction she...
lang:en **score:39** filesize: 8.28 M page_count: 13 document date: 2019-07-23

[\[pdf\]](#) User Manual

4b End Panel Controls on the SB400 SB500 Mute The MUTE button remote control operates in normal manner When is active display will show a blinking 00 for 20 seconds zvox audio sb400 use and care manual d1vofmza27mmhi cloudfront net product

4a. Infrared Remote Control of the SB400/**SB500** Learning: You can teach the SB400/**SB500** to respond to your current TV remote control for the following functions: VOLUME, MUTE and POWER. This is described in the separate instruction sheet beginning Teach Your SB400/ **SB500**... After this learning ...

lang:en **score:39** filesize: 1.11 M page_count: 2 document date: 2015-12-14

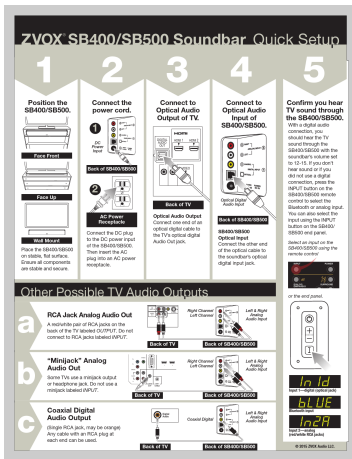


[\[pdf\]](#) Borchure

ZVOX SB400 SB500 Brochure zvoxaudio mas assets theme zvox live documents |||

Full Metal Jacket **SB500**: 43.5 wide, dual 4 long-excursion woofers, 3 full-range drivers, 140 watt digital amplifier, bass down to 42 Hz. 599.99. **SB400**: 36 wide, 4 long-excursion woofer, 3 full-range drivers, 118 watt digital amplifier, bass down to 58 Hz. 499.99. The new ZVOX aluminum sound...

lang:en **score:37** filesize: 1.4 M page_count: 1 document date: 2016-02-19



[\[pdf\]](#) Label

SB500400 SB500 QuickSetupSheet 2016 zvoxaudio mas assets theme zvox live documents |||

ZVOX SB400/**SB500** Soundbar Quick Setup 1234 5 Position the SB400/**SB500**. Face Front Face Up Wall Mount Place the SB400/**SB500** on stable, flat surface. Ensure all components are stable and secure. Connect the power cord. 1 DC PowDelrGITAL InpuAtUDIO OUT HDMI 1 HDMI 2 Connect to Optical Audio Outpu...

lang:en score:35 filesize: 912.13 K page_count: 1 document date: 2015-12-14

[\[pdf\]](#) Dimension Guide

ZVOX Soundbar SB700 SB500 SB400 Dimensions 2017 r4 Soundba SB380 Sound Bar Audio

48006578912 support zvox helpdesk attachments |||

Back view with dimensions of the ZVOX Audio Soundbars SB700,**SB500** and SB400 input panel 90 mm 3 9/16 SB700 743 mm 29 1/4 1451 mm 57 1/8 input panel 90 mm 3 9/16 **SB500** 743 mm 29 1/4 1114 mm 43 7/8 90 mm 3 9/16 SB400 input panel 743 mm 29 1/4 902 mm 35.5 Height 144...

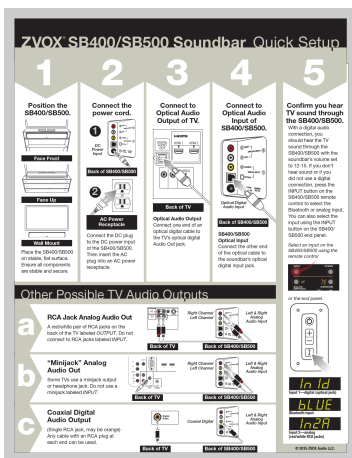
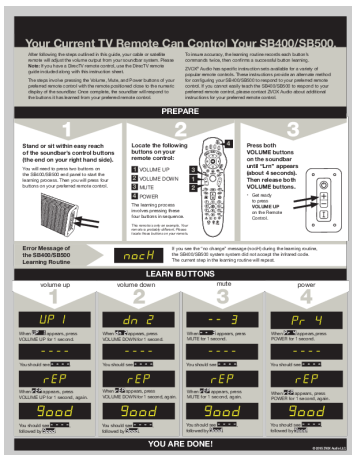
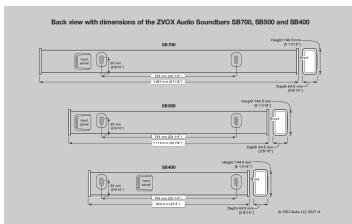
lang:en score:34 filesize: 231.68 K page_count: 1 document date: 2018-03-21

[\[pdf\]](#) Instructions Guide

PREPARE 1 2 3 images na ssl amazon m media display of the soundbar Once complete will respond to buttons it has learned from your preferred remote control To insure accuracy learning routine records each button s commands twice then confirms a successful ZVOX® Audio specific instruction sets available for variety popular A1L2RwqS0dL I

Your Current TV Remote Can Control Your SB400/**SB500**. After following the steps outlined in this guide, your cable or satellite remote will adjust the volume output from your soundbar system. Please Note: If you have a DirecTV remote control, use the DirecTV remote guide included along with this ins...

lang:en score:33 filesize: 1.77 M page_count: 1 document date: 2015-12-15



[\[pdf\]](#) Label

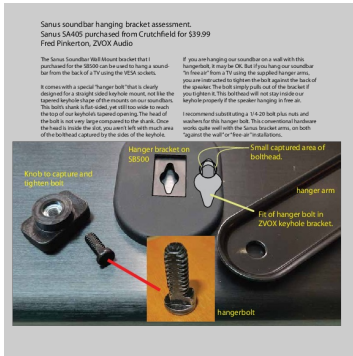
ZVOX SB400 SB500 Soundbar Quick Setup 1 2 3 4 5 soundbar s volume set to 12 15 If you don t hear

sound or if Back of did not use a digital connection press the INPUT button on remote control select

Bluetooth analog input You can also using end panel Optical Input 91z x3XO8tL images na ssl amazon I

ZVOX SB400/**SB500** Soundbar Quick Setup 1234 5 Position the SB400/**SB500**. Face Front Face Up Wall Mount Place the SB400/**SB500** on stable, flat surface. Ensure all components are stable and secure. Connect the power cord. 1 DC PowDelrGITAL InpuAtUDIO OUT HDMI 1 HDMI 2 Connect to Optical Audio Outpu...

lang:en score:28 filesize: 914.05 K page_count: 1 document date: 2017-05-06

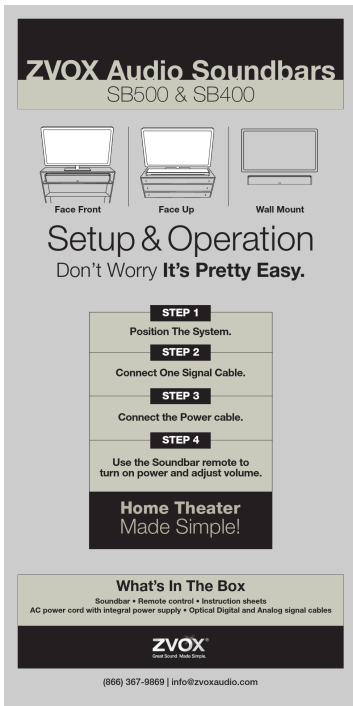


[pdf]

Sanus Bolthe Wall Mounting AV SB models ZVOX Audio 48000589573 support zvox helpdesk attachments |||

Sanus soundbar hanging bracket assessment. Sanus SA405 purchased from Crutcheld for 39.99 Fred Pinkerton, ZVOX Audio The Sanus Soundbar Wall Mount bracket that I purchased for the **SB500** can be used to hang a soundbar from the back of a TV using the VESA sockets. It comes with a special hanger bo...

lang:en score:28 filesize: 130.72 K page_count: 1 document date: 2016-03-04



[pdf] Instructions

Don t Worry It s Pretty Easy soundbar onto two screwheads using these mounting sites A ZVOX Audio weighs between 15 and 20 pounds NOTE is the installer responsibility to ensure screws are installed into wall or other surface securely that correct size B1zjs KYbRS m media amazon images I na ssl does not block television infrared remote sensor There should be no shelf flat immediately above in this configuration Wall Mount The has sturdy keyhole shaped hanger mounts on back panel You can hang ZVOX Audio Soundbars **SB500** SB400 Face Front Face Up Wall Mount Setup Operation Don t Worry It s Pretty Easy. STEP 1 Position The System. STEP 2 Connect One Signal Cable. STEP 3 Connect the Power cable. STEP 4 Use the Soundbar remote to turn on power and adjust volume. Home Theater Made Sim...

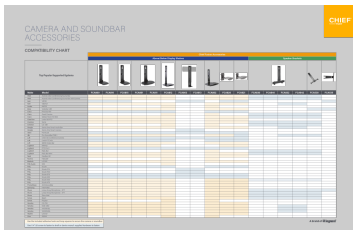
lang:en score:20 filesize: 2.21 M page_count: 7 document date: 2017-05-16

[pdf] Flyer Accessories Borchure

CAMERA AND SOUNDBAR ACCESSORIES Legrand AV 1 giorno fa — Acendo Vibe Conferencing Sound Bar with Camera Aver VB130 VB342 Audac IMEO2 Bose Videobar VB1 Cisco Precision 60 Quad 220349 Compatible Chief Soundbar Accessories Final ver2 legrandav media files chief flyers brochures compatible soundbar accessories final ashx la en |||

CAMERA AND SOUNDBAR ACCESSORIES COMPATIBILITY CHART Above/Below Display Shelves Chief Fusion Acces ... 2FT Linear Array Microphone - 4FT Stem Wall Beam Playbar CS-700 ESB-1080 YAS108-BL YAS209-BL UVC40 **SB500** FCA800 FCA810 Use the included adhesive hook and loop squares to secure the camera or sound...

lang:en score:18 filesize: 563.84 K page_count: 3 document date: 2022-08-12

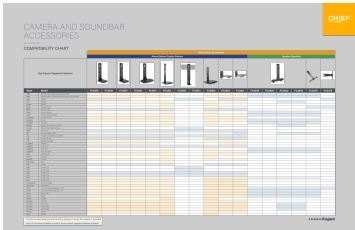


[\[pdf\]](#) Accessories

CAMERA AND SOUNDBAR ACCESSORIES 2 avr 2024 — Crestron Saros UC SB1 Google Series One Smart Audio Bar Camera Jabra PanaCast JBL Pro SoundBar PSB 1 Loft C100 HD QM106328 literature puertoricosupplier 105 |||

CAMERA AND SOUNDBAR ACCESSORIES COMPATIBILITY CHART Above/Below Display Shelves Chief Fusion Acces ... 2FT Linear Array Microphone - 4FT Stem Wall Beam Playbar CS-700 ESB-1080 YAS108-BL YAS209-BL UVC40 **SB500** FCA800 FCA810 Use the included adhesive hook and loop squares to secure the camera or sound...

lang:en score:18 filesize: 581.37 K page_count: 3 document date: 2022-11-23

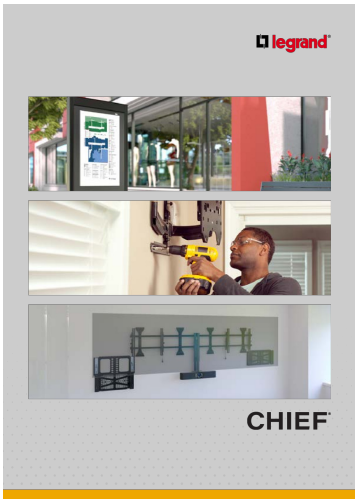


[\[pdf\]](#) User Manual

Descargar 19 gen 2024 — MANUAL 10 2 259mm PATRÓN DE MONTAJE COMPATIBILIDAD VERSIONES UNIVERSALES 200 200mm 600x400mm TILT 0° 3° 5° of back tilt 3 settings TAMAÑOS 72MRhhQVms26WGsG6z163ZTHvi9MdDkBLPR4NH7N bticino mx |||

AV Soportes de Video Wall Connexsys 6 Soportes Serie FitTM 10 Soportes Serie Fusion 14 Sopo ... Playbar Yamaha CS-700 Yamaha ESB-1080 Yamaha YAS108-BL Yamaha YAS209-BL Yealink UVC40 Zvox **SB500** FCA800 FCA810 FCA815 FCA801 FCA811 FCA812 FCA803 Incluye ganchos cuadrados y bucle adh...

lang:es score:14 filesize: 9.57 M page_count: 126 document date: 2024-01-29



[\[pdf\]](#)

PsAudio Copper Issue 123 issue psaudio plugins psa copper magazine public |||

Issue 123 NOVEMBER 2ND, 2020 Every day is an opportunity to learn something. Even when there are day ... ue clarity using DSP to mimic the way hearing aids function. It was first included in the SB400 and **SB500** soundbars, which also had built-in subwoofers. In 2017 we debuted what we consider to be a ver...

lang:en score:10 filesize: 7.03 M page_count: 91 document date: 2022-04-11

