

Xiaomi MZB09YFEU

Xiaomi Redmi 9C Smartphone User Manual

Model: MZB09YFEU

1. INTRODUCTION

This manual provides essential information for the safe and efficient use of your Xiaomi Redmi 9C smartphone. Please read this manual carefully before using the device and keep it for future reference. The Xiaomi Redmi 9C features a 6.53-inch HD+ DotDrop display, a MediaTek Helio G35 processor, a 13MP AI triple rear camera, and a large 5000 mAh battery with 10W fast charging support. It comes with 4GB RAM and 128GB internal storage.

2. SETUP

2.1 Package Contents

Verify that your package contains the following items:

- Xiaomi Redmi 9C Smartphone
- Power Adapter (10W)
- USB Cable
- SIM Eject Tool
- User Manual (this document)

2.2 Inserting SIM Card and microSD Card

Locate the SIM card tray on the side of the device. Use the provided SIM eject tool to open the tray. Insert your Nano-SIM card(s) and an optional microSD card into the designated slots. Ensure the cards are correctly oriented as shown in the diagram.

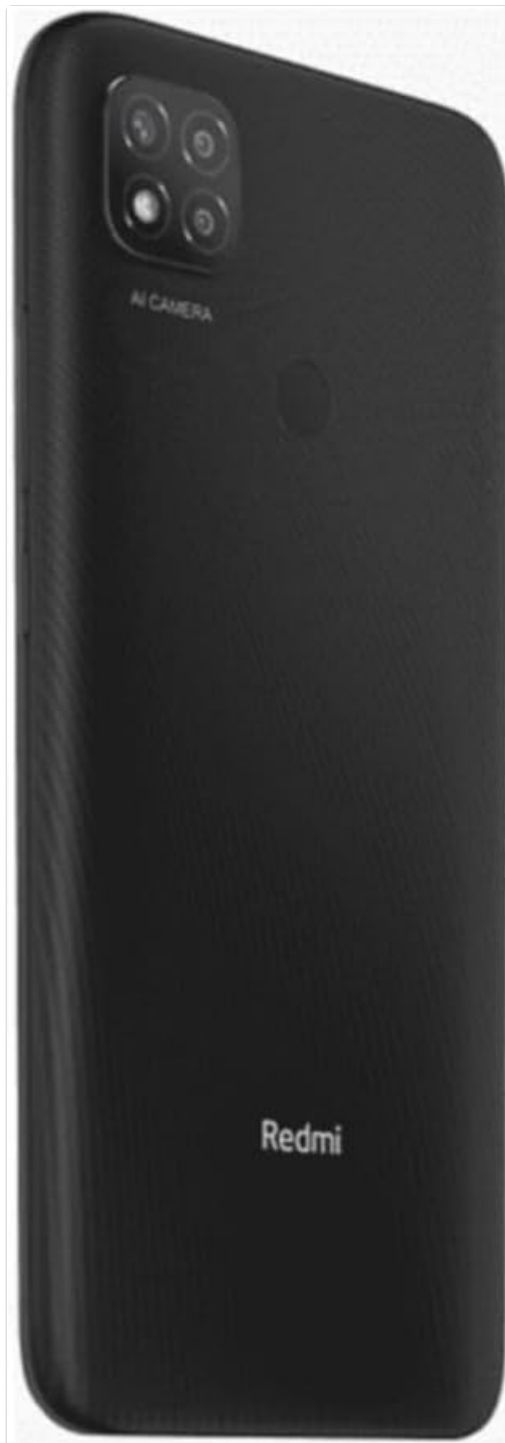


Figure 2.2.1: Side view of the Xiaomi Redmi 9C, showing the location of the SIM card tray. The tray is designed to hold two Nano-SIM cards and one microSD card simultaneously.

2.3 Initial Power On and Setup Wizard

Press and hold the Power button until the Xiaomi logo appears. Follow the on-screen instructions to complete the initial setup, including language selection, Wi-Fi connection, Google account login, and security settings.

3. OPERATING YOUR DEVICE

3.1 Device Layout



Figure 3.1.1: Front view of the Xiaomi Redmi 9C, highlighting the 6.53-inch DotDrop display and the front camera notch.



Figure 3.1.2: Rear view of the Xiaomi Redmi 9C, showing the triple camera module with AI capabilities and the rear-mounted fingerprint sensor.

The Redmi 9C features a large display on the front, with a small notch for the front camera. On the rear, it has a square camera module housing three lenses and a flash, along with a circular fingerprint sensor. The power and volume buttons are located on the right side of the device.

3.2 Basic Functions

- **Power On/Off:** Press and hold the Power button.
- **Screen Lock/Unlock:** Briefly press the Power button.
- **Volume Adjustment:** Use the Volume Up/Down buttons.
- **Taking Screenshots:** Press Volume Down and Power button simultaneously.

3.3 Camera Usage

The Xiaomi Redmi 9C is equipped with a 13MP AI triple rear camera system. To open the camera application, tap the camera icon on your home screen or app drawer.



Figure 3.3.1: A close-up view of the Redmi 9C's rear camera module, showing the three lenses and the "AI CAMERA" branding, indicating its artificial intelligence features for photography.

The AI features assist in scene recognition and optimization for better photo quality. Explore different modes like Portrait, Macro, and Pro mode for various photographic effects.

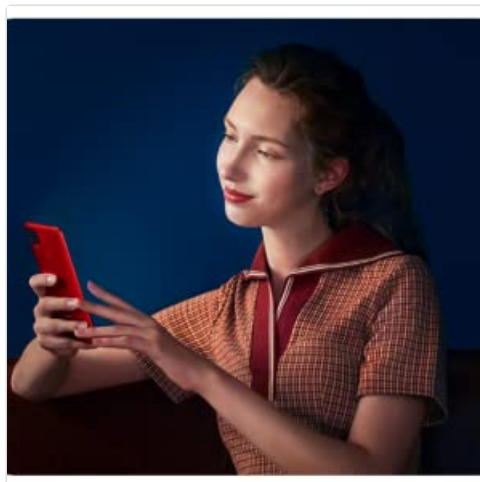


Figure 3.3.2: An image depicting a person interacting with the Redmi 9C in a dimly lit environment, showcasing the phone's display and user interface during use.



Figure 3.3.3: A sample selfie photo, demonstrating the clarity and color reproduction capabilities of the Redmi 9C's front-facing camera.



Figure 3.3.4: A user holding the Redmi 9C to take a selfie, illustrating the ergonomic design and ease of use for self-portraits.

3.4 Battery Management

The Redmi 9C is equipped with a 5000 mAh high-capacity battery, providing extended usage time. To maximize battery life:

- Reduce screen brightness.
- Disable Wi-Fi, Bluetooth, and GPS when not in use.
- Close background applications.
- Use power-saving modes.



Figure 3.4.1: A graphical representation indicating the 5000 mAh battery capacity of the Redmi 9C, emphasizing its long-lasting power.

The device supports 10W fast charging. Always use the original charger and cable for optimal charging performance and safety.

3.5 Gaming and Multimedia

The MediaTek Helio G35 processor provides a smooth experience for everyday tasks and casual gaming. The large 6.53-inch display enhances the viewing experience for videos and games.



Figure 3.5.1: The Redmi 9C displaying a high-action racing game, illustrating its capability for multimedia consumption and gaming on its large screen.

For an optimal gaming experience, ensure your device is sufficiently charged and close unnecessary background applications.

3.6 Connectivity

The Redmi 9C supports various connectivity options:

- **Wi-Fi:** Connect to wireless networks for internet access.
- **Bluetooth:** Pair with wireless headphones, speakers, and other devices.
- **GPS:** Utilize location services for navigation and mapping applications.
- **3.5mm Audio Jack:** Connect wired headphones.

4. MAINTENANCE

4.1 Cleaning Your Device

Use a soft, lint-free cloth to clean the screen and body of your phone. Avoid using harsh chemicals or abrasive materials that could damage the device.

4.2 Software Updates

Regularly check for and install software updates to ensure optimal performance, security, and access to new features. Navigate to *Settings > About phone > MIUI version* to check for updates.

4.3 Storage Management

With 128GB of internal storage, you have ample space for apps and media. To manage storage, go to *Settings > Storage*. Consider regularly clearing cache and uninstalling unused applications to free up space.

5. TROUBLESHOOTING

Problem	Possible Solution
Device does not power on	Ensure the battery is charged. Connect the charger and wait a few minutes before attempting to power on again. If unresponsive, perform a forced restart by holding the Power button for 10-15 seconds.
Apps are crashing or freezing	Clear the app's cache (<i>Settings > Apps > [App Name] > Storage > Clear cache</i>). Restart the device. If the issue persists, consider reinstalling the app or performing a factory reset (backup data first).
Poor battery life	Review battery usage in <i>Settings > Battery</i> to identify power-hungry apps. Reduce screen brightness, disable unnecessary connectivity features (Wi-Fi, Bluetooth, GPS), and close background apps.
Cannot connect to Wi-Fi	Ensure Wi-Fi is enabled. Restart your router and the phone. Forget the network and reconnect. Check if other devices can connect to the same Wi-Fi network.

6. SPECIFICATIONS

Feature	Detail
Model Name	Redmi 9C
Model Number	MZB09YFEU
Display	6.53-inch HD+ DotDrop Display
Processor	MediaTek Helio G35 (1.8 GHz CPU Speed)
RAM	4 GB
Internal Storage	128 GB
Rear Camera	13MP AI Triple Camera
Battery Capacity	5000 mAh (Nominal Power: 3600)
Charging	10W Fast Charging
Dimensions	0.9 x 7.71 x 16.49 cm
Weight	196 g

Feature	Detail
Connectivity	Wi-Fi, Bluetooth, GPS, Cellular (GSM), 3.5mm Audio Jack
Special Features	Camera, Flash

7. WARRANTY AND SUPPORT

For warranty information and technical support, please refer to the official Xiaomi website or contact their customer service. Keep your proof of purchase for warranty claims.

You can find more information and support resources on the official Xiaomi website:[Xiaomi Support](#)

© 2024 Xiaomi Inc. All rights reserved.
Product specifications are subject to change without notice.

Documents - Xiaomi – MZB09YFEU



[\[pdf\]](#) Dimension Guide

Redmi 9C Manuale Xiaomi Smartphone 6 5 4 128 GB 13 MP Android colore Grigio MZB09YFEU 339075 mmo 93012309 1631254316 7014 11743 prezzoforte it |||

Redmi 9C AI triple camera 6.53 large display Camera AI triple camera 13MP main camera - f/2.2, AF, FOV 75.2 2MP macro camera - f/2.4, FF 4cm focus distance 2MP depth sensor - f/2.4 Single flash Kaleidoscope effects Front camera 5MP front camera - f/2.2, FOV 77.8 Portrait selfies Palm S...

lang:en score:19 filesize: 66.53 K page_count: 1 document date: 2023-05-11