

## FOXWELL NT604 & BT100 Pro

# FOXWELL NT604 OBD2 Scanner and BT100 Pro Battery Tester User Manual

Model: NT604 & BT100 Pro

[Introduction](#)

[Setup](#)

[Operation](#)

[Maintenance  
Warranty &  
Support](#)

[Troubleshooting](#)

[Specifications](#)

## 1. INTRODUCTION

This manual provides comprehensive instructions for the operation and maintenance of your FOXWELL NT604 OBD2 Scanner and BT100 Pro Battery Tester. These devices are designed to assist in diagnosing vehicle issues and assessing battery health, providing valuable information for vehicle maintenance. The FOXWELL NT604 is an advanced diagnostic scan tool capable of reading and clearing fault codes, displaying live data, and performing various tests on key vehicle systems. The FOXWELL BT100 Pro is a professional battery analyzer designed to test 12V batteries, providing accurate readings on battery voltage, CCA, internal resistance, and overall health.

## 2. SETUP

### 2.1 Unpacking the Device

Carefully remove all components from the packaging. Verify that all items listed in the product packaging are present. Retain the packaging for future storage or shipping.

### 2.2 Initial Power-Up

The NT604 scanner typically powers on when connected to a vehicle's OBD-II port. The BT100 Pro battery tester powers on when connected to a 12V battery.



Figure 2.1: The FOXWELL NT604 OBD2 Scanner and BT100 Pro Battery Tester.

### 3. OPERATION

#### 3.1 FOXWELL NT604 OBD2 Scanner Operation

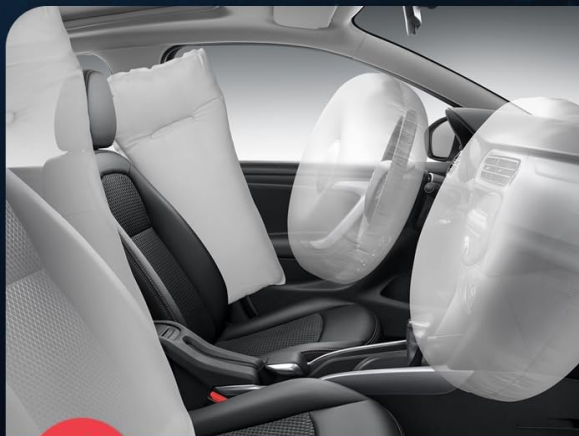
The NT604 scanner connects to your vehicle's On-Board Diagnostics II (OBD-II) port to access vehicle system information.

1. **Locate the OBD-II Port:** The OBD-II port is usually located under the dashboard on the driver's side.
2. **Connect the Scanner:** Plug the NT604's diagnostic cable into the vehicle's OBD-II port. The scanner will power on automatically.
3. **Vehicle Communication:** The scanner will attempt to establish communication with the vehicle's ECU (Engine Control Unit). Follow on-screen prompts.
4. **Main Menu Navigation:** Use the navigation buttons (up, down, left, right, OK, ESC) to select desired functions from the main menu. Common functions include:
  - **Read Codes:** Retrieves Diagnostic Trouble Codes (DTCs) from the vehicle's systems.
  - **Clear Codes:** Erases DTCs from the vehicle's memory. *Note: Clearing codes does not fix the underlying problem. Address the issue before clearing codes.*
  - **Live Data:** Displays real-time sensor data from the vehicle.
  - **Freeze Frame:** Captures a snapshot of vehicle operating conditions at the time a fault code was set.
  - **I/M Readiness:** Checks the status of emission-related monitors.
  - **System Diagnostic:** Accesses specific vehicle systems like Engine, ABS, SRS (Airbag), and Transmission for detailed diagnostics.

# 4 System Diagnostic Scanner



**Transmission  
System Diagnostic**



**SRS System Diagnostic**



**ABS Diagnostic**



**Engine System Diagnostic**

Figure 3.1: The NT604 scanner's main menu showing various OBDII functions.

# FROM CAR TO BOAT

Makes Compatibility Easy



Figure 3.2: The NT604 scanner's capability to diagnose Engine, ABS, SRS, and Transmission systems.

## 3.2 FOXWELL BT100 Pro Battery Tester Operation

The BT100 Pro is designed for testing 12V automotive batteries. It can perform tests both in-vehicle and out-of-vehicle.

1. **Prepare the Battery:** Ensure battery terminals are clean and free of corrosion.
2. **Connect the Tester:**
  - Connect the red clamp to the positive (+) battery terminal.
  - Connect the black clamp to the negative (-) battery terminal.
  - The tester will power on automatically.
3. **Select Test Type:**
  - **In-Vehicle Test:** For batteries installed in the vehicle.

- **Out-of-Vehicle Test:** For standalone batteries.
4. **Select Battery Type:** Choose the correct battery type (e.g., Regular Flooded, AGM Flat Plate, AGM Spiral, GEL) from the menu. Incorrect selection may lead to inaccurate results.
  5. **Enter CCA Rating:** Input the Cold Cranking Amps (CCA) rating found on the battery label.
  6. **Perform Test:** The tester will perform the analysis and display results such as:
    - Voltage
    - Measured CCA
    - Internal Resistance
    - State of Health (SOH)
    - State of Charge (SOC)



Figure 3.3: The BT100 Pro supports both in-vehicle and out-of-vehicle battery testing.



Figure 3.4: The BT100 Pro provides detailed battery status including internal resistance, CCA, and health display.

## **4. MAINTENANCE**

### **4.1 Cleaning**

Wipe the device with a soft, damp cloth. Do not use abrasive cleaners or solvents. Ensure the device is dry before storage.

### **4.2 Software Updates**

Periodically check the FOXWELL official website for software updates for the NT604 scanner. Updates can improve performance, add new features, and expand vehicle compatibility. Follow the instructions provided on the website for updating the device firmware.

### 4.3 Storage

Store the devices in a clean, dry environment, away from extreme temperatures and direct sunlight. Keep cables neatly coiled to prevent damage.

## 5. TROUBLESHOOTING

Problem	Possible Cause	Solution
NT604 does not power on.	Loose OBD-II connection; vehicle's OBD-II port fuse blown; vehicle battery low.	Ensure secure connection. Check vehicle's OBD-II port fuse. Verify vehicle battery voltage.
NT604 fails to link with vehicle.	Incorrect protocol selected; vehicle ignition off; faulty connection.	Ensure ignition is ON. Check cable connection. Try a different vehicle if possible to isolate the issue.
BT100 Pro does not power on.	Loose battery clamp connection; battery voltage too low.	Ensure clamps are securely attached to clean battery terminals. Test a different battery if available.
Inaccurate BT100 Pro readings.	Incorrect battery type or CCA entered; dirty battery terminals.	Verify battery type and CCA input. Clean battery terminals thoroughly.

## 6. SPECIFICATIONS

### FOXWELL NT604 OBD2 Scanner

- **Supported Systems:** Engine, ABS, SRS (Airbag), Transmission
- **OBDII Modes:** 10 modes (Read Codes, Clear Codes, Live Data, Freeze Frame, I/M Readiness, Component Test, O2 Monitor Test, On-Board Monitor Test, Retrieve Vehicle Info, Modules Present)
- **Power Source:** Vehicle OBD-II port

### FOXWELL BT100 Pro Battery Tester

- **Battery Voltage:** 12V
- **Test Range:** 100-1100 CCA
- **Supported Battery Types:** Regular Flooded, AGM Flat Plate, AGM Spiral, GEL
- **Test Results:** Voltage, CCA, Internal Resistance, State of Health (SOH), State of Charge (SOC)
- **Power Source:** Battery Powered (from the tested battery)



Figure 6.1: Example of battery test results displayed on the BT100 Pro.

## 7. WARRANTY AND SUPPORT

### 7.1 Warranty Information

FOXWELL products are covered by a limited warranty against defects in materials and workmanship. Please refer to the warranty card included with your product or visit the official FOXWELL website for detailed warranty terms and conditions.

### 7.2 Technical Support

For technical assistance, software updates, or service inquiries, please contact FOXWELL customer support. Contact information can typically be found on the official FOXWELL website or in the product packaging.

Website: [www.foxwelltech.com](http://www.foxwelltech.com) (Example link, verify official site)

