

JOUNJIP 5060928560005

JOUNJIP Mechanical Keyless Combination Lever Handle Door Lock

Model: 5060928560005

Brand: JOUNJIP

INTRODUCTION

Thank you for choosing the JOUNJIP Mechanical Keyless Combination Lever Handle Door Lock. This manual provides detailed instructions for the proper installation, operation, and maintenance of your new lock. Designed for durability and convenience, this mechanical lock requires no batteries or external power, making it ideal for various indoor and outdoor applications, including doors, gates, and fences.

PRODUCT OVERVIEW AND COMPONENTS

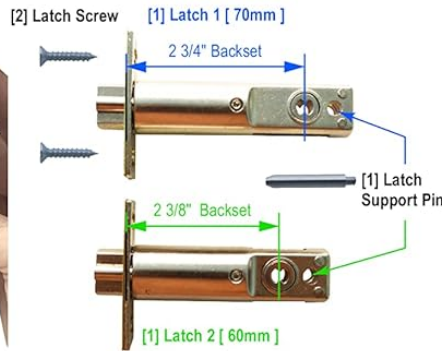
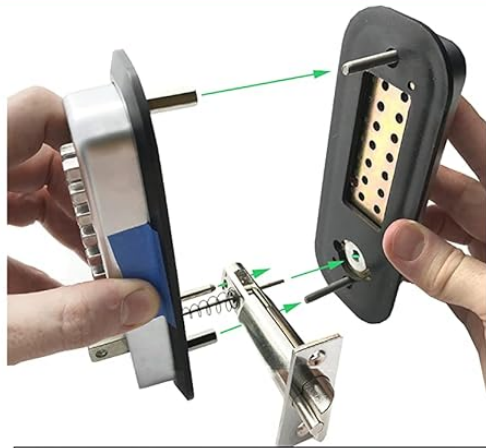
Before beginning installation, please ensure all components are present and undamaged. The package includes the following items:

- 2 Keypads (Primary and Secondary)
- 2 Door Seals
- 2 Latch Bolts
- 2 Screw Extension Posts
- 1 Latch Post
- 1 Strike Plate Set
- 2 Screws for Strike Plate
- 6 Mounting Screws (various sizes)
- 2 Latch Screws
- 3 Spindle Sizes (pre-cut for 35mm-51mm door thickness)
- 1 Paper Template
- Instruction Manual

- 1 Unique Preset Code Card
- 1 Set of Code Pins & Tweezers

LIST OF ALL PARTS

Please confirm all parts: (New version: 3 different size spindles included)
Call at 310-773-0735 for any missing parts or questions.



Spindles & Mounting Screw Sets - 3 door thickness options (Included)

Small: 1 3/8" thick door

For 1 1/2" thick door cut 1/4" from medium size spindle

Medium: 1 3/4" thick door

Large: 2" thick door

For over 2 1/8" thick door, a longer spindle can be purchased on Amazon

[2] Screw Extension Post

Small [2] mounting screws

Medium [2] mounting screws

Large [2] mounting screws



[1] Unique Preset Code Card

EXAMPLE CODE: C 1 2 6 7 X

[1 set] Code Pins & Tweezer

NOTE: Install these stickers to remind users about "CLUTCH" feature. Applying too much pressure on the lever handle while the keypad is still locked using code will cause the lever to drop down and not spring back. The handle is not broken! This is to prevent the inside mechanism from being damaged. Simply return the lever back to horizontal position and reenter the correct code to open the door.

CLUTCH Feature: If lever is forced down, just return it to horizontal.

CLUTCH Feature: If lever is forced down, just return it to horizontal.

CLUTCH Feature: If lever is forced down, just return it to horizontal.

CLUTCH Feature: If lever is forced down, just return it to horizontal.

[1] Primary Keypad Body [outside]

[1] Door Seal [2] Screws

[1] Lever Sticker Card

[1] Secondary Keypad Body [inside]

[1] Door Seal [2] Screws

Dimensions: 1 5/8" width, 5 9/16" height, 2 1/2" depth, 6 7/16" height.

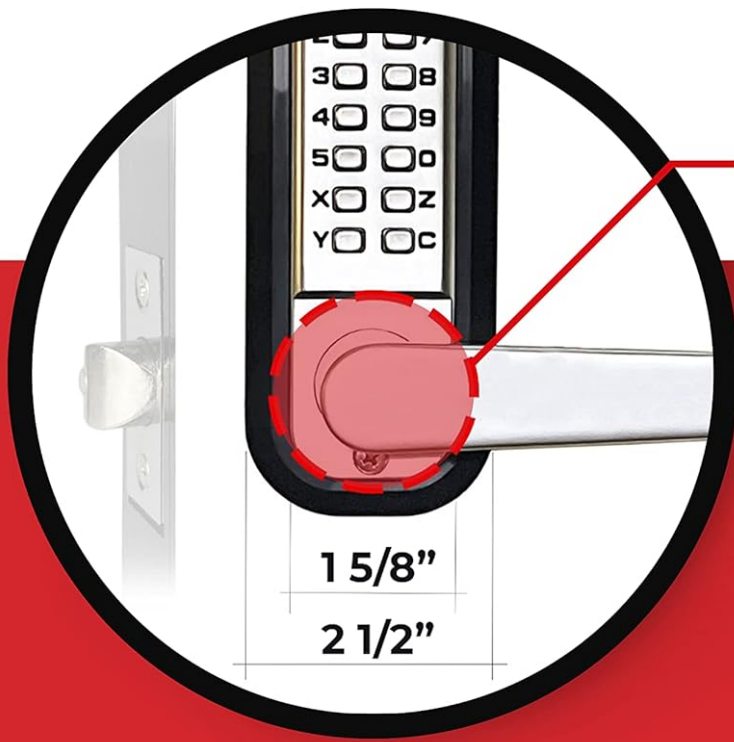
If any parts are missing or broken, call / text Jon 310-773-0735 or email Jon@JounJip.com

Figure 1: List of all included parts for the JOUNJIP Mechanical Keyless Combination Lever Handle Door Lock.

SETUP AND INSTALLATION

Proper installation is crucial for the optimal performance and security of your lock. Follow these steps carefully. An official installation video is provided below for visual guidance.

1. **Prepare the Door:** Ensure your door has a standard 2 1/8" bore hole. Measure the backset (distance from the door edge to the center of the bore hole).
2. **Use the Template:** Find the correct backset line on the provided paper template and fold it along the designated line. Align the center line of the template with the center of the latch hole on your door. Secure the template with painter's tape.
3. **Drill Holes:** Drill the necessary holes as indicated on the template. Use the door seal to verify correct hole placement before proceeding.
4. **Install the Latch:** Insert the latch into the door edge and secure it with the provided screws.
5. **Install Mounting Posts:** Screw the mounting posts into the primary keypad.
6. **Insert Latch Post:** The latch post goes into the hole farthest away from the door edge on the primary keypad.
7. **Prepare Keypads:** Attach the back seal to the primary keypad. Temporarily tape the primary and secondary keypads together with painter's tape to maintain alignment during installation.
8. **Select Spindle:** Measure your door thickness. Choose the correct spindle length from the three pre-cut sizes provided (1 3/8", 1 3/4", 2"). For 1 1/2" thick doors, cut 1/4" from the medium spindle. For doors over 2 1/8" thick, a longer spindle may be required (available separately).
9. **Insert Spindle:** Insert the selected spindle into the primary keypad, ensuring the spring is correctly positioned. Then, insert the spindle through the latch hole in the door. The spindle should extend approximately 1/4" past the door surface on the other side.
10. **Attach Secondary Keypad:** Place the secondary keypad onto the extended spindle, ensuring both keypads are perfectly lined up with each other.
11. **Secure Keypads:** Use the correct length mounting screws for your door thickness to secure the keypads together.
12. **Attach Lever Handles:** Attach the lever handles to both keypads and tighten the set screws to secure them.
13. **Test Functionality:** Test the keypad function by entering the code and operating the lever.



2 1/8"
Standard
bore hole

The Lock works with standard bore hole

The 2 1/2" wide black seal (included) is wider than the standard 2 1/8" bore hole on a door.

NOTE: the Keypad alone is 1 5/8" wide.

Figure 2: Standard bore hole dimensions for installation.



PLEASE DON'T FORGET

3 posts must be installed on the primary keypad securely along with the spindle + spring.

Some customers forget to install the two screw extension posts and think the screws are too short.

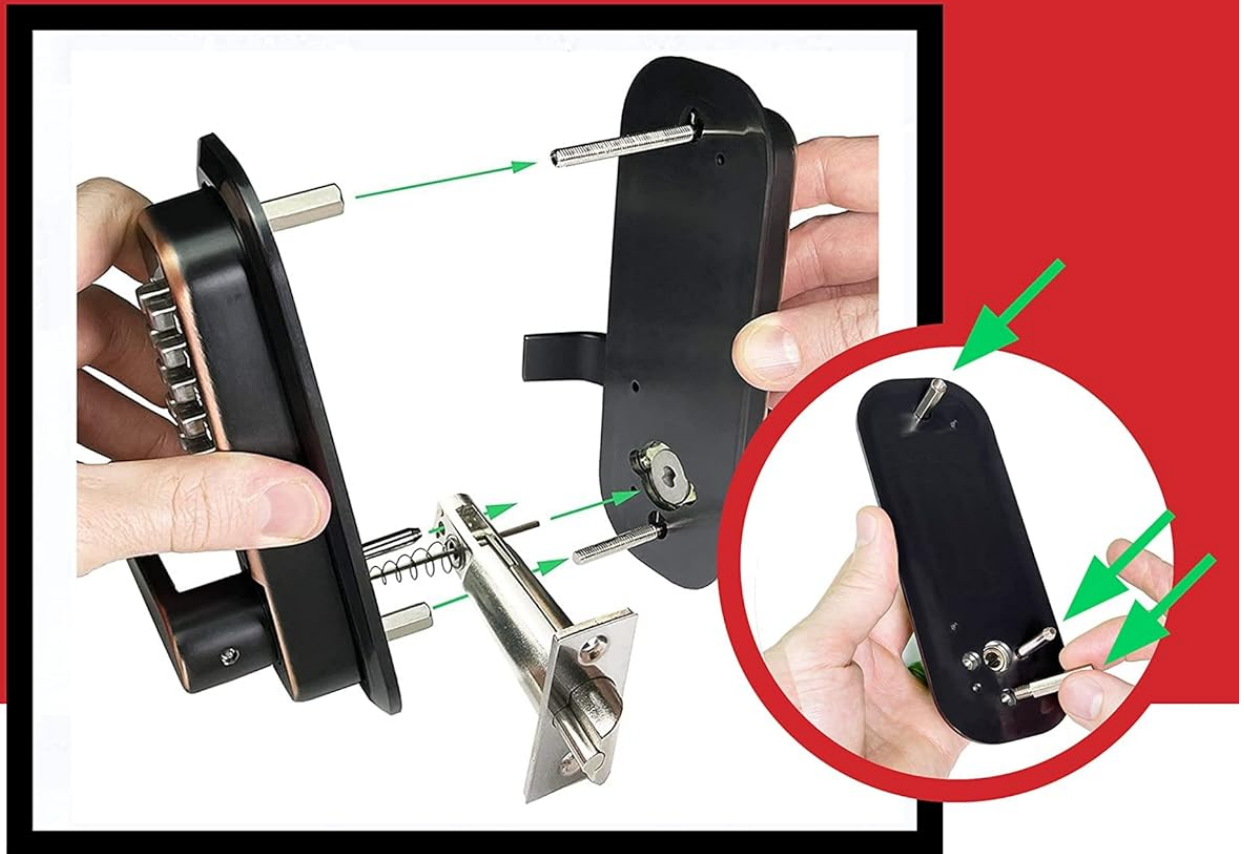


Figure 3: Correct installation of posts, spindle, and spring on the primary keypad.

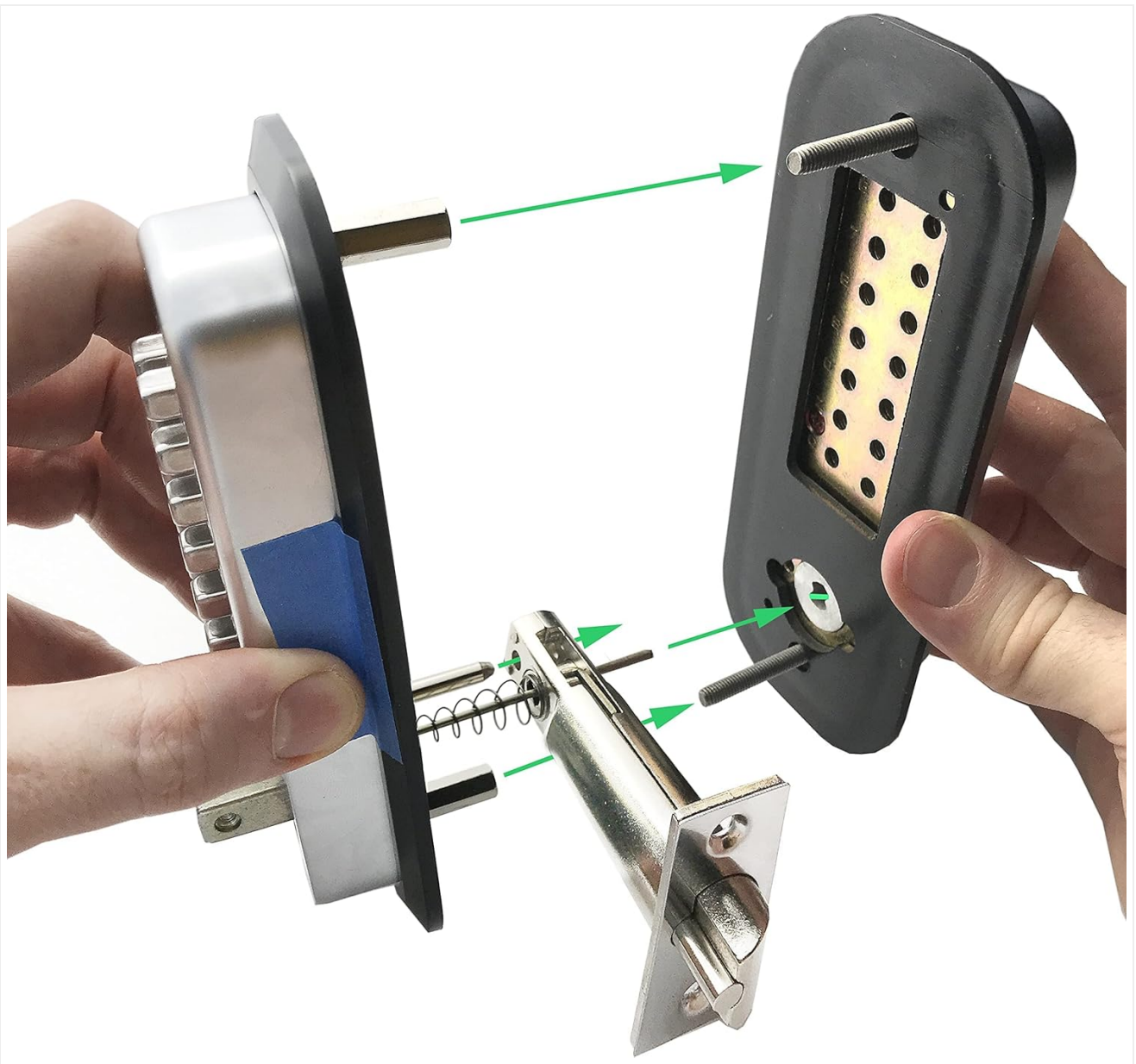


Figure 4: Spindle insertion and extension through the door.

Installation Video Guide

Your browser does not support the video tag.

Video 1: Detailed guide on how to install the JOUNJIP Double Sided Keypad Lever Lock. This video covers measuring, drilling, assembling components, and final testing.

OPERATING INSTRUCTIONS

Entering Your Code

To unlock the door, always press the 'C' button first to clear any previous entries. Then, enter your unique combination code. Once the correct code is entered, the lever will engage, allowing you to open the door.



Figure 5: Always press the 'C' button before entering your passcode to clear previous inputs.

Passage Mode

The lock features a passage mode option, allowing you to temporarily deactivate the code for free passing without needing to change the passcode. This is useful for periods of high traffic or events. Consult the detailed instructions for activating and deactivating passage mode.

Automatic Latching

The latch automatically locks doors every time they close, ensuring continuous security. There is no need to manually turn a knob to secure the door once it's shut.



Latch Automatically Locks Doors every time

Keeps your doors and gates
always secured.

No need to manually turn the
knob to close doors

Figure 6: The lock's latch automatically secures the door upon closing.

MAINTENANCE

As a mechanical lock, the JOUNJIP Keyless Lock requires minimal maintenance. Keep the keypad and moving parts clean from dirt and debris. Avoid using harsh chemical cleaners that could damage the finish or internal mechanisms. Periodically check that all screws are tight and that the lock operates smoothly. Lubrication with a graphite-based lubricant can be applied to the internal mechanisms if needed, but avoid oil-based lubricants which can attract dust.

TROUBLESHOOTING

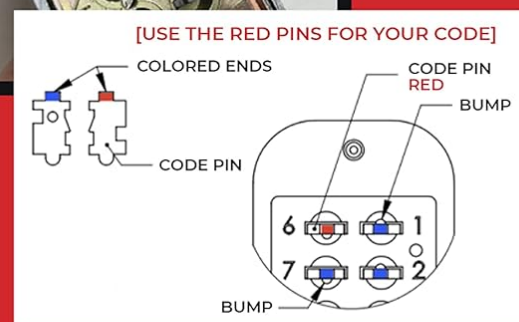
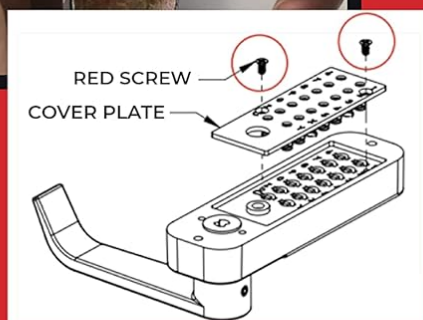
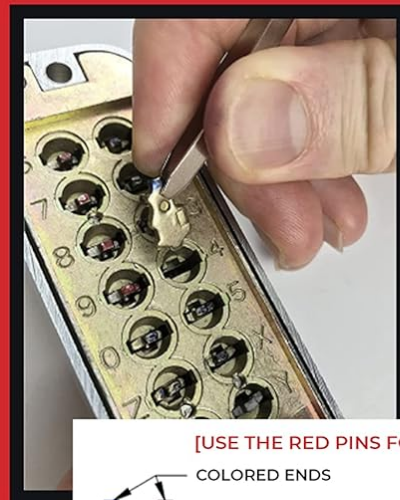
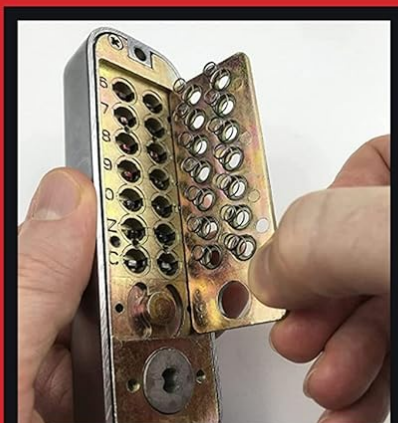
- **Code Not Working:** Ensure you press the 'C' button before entering your code. Verify that the correct code pins are set according to your unique preset code card. If changing the code, ensure the 'C' button is held down while inserting or removing pins.

Drop-Pin Code Change



Drop in RED PIN for your new code and BLUE for non code buttons.

WARNING: ALWAYS must press and hold down "C" button while taking pin in or out



NEW LOCK'S USER?

No coding changes are required for new users. Use the unique preset code that comes with your lock.

Figure 7: Instructions for changing the code using the drop-pin method.

- **Lever Not Engaging/Stuck:** This can often be caused by an incorrect spindle length or improper alignment during installation. Re-check your door thickness and ensure the spindle extends approximately 1/4" past the door surface. Ensure the keypads are perfectly aligned and not overtightened, which can cause binding.
- **Latch Not Locking Automatically:** Inspect the latch mechanism for any obstructions or debris. Verify that the strike plate is correctly aligned with the latch bolt. Ensure the lock is installed squarely and not at an angle that would impede the latch's movement.

SPECIFICATIONS

Feature	Detail
Brand	JOUNJIP
Model Number	5060928560005
Lock Type	Keypad, Mechanical Combination
Special Feature	Keyless, No Batteries, No Power Needed
Material	Satin Chrome
Item Dimensions (L x W x H)	6.5 x 2.5 x 2.13 inches
Item Weight	4 Pounds
Controller Type	100% Mechanical
Recommended Uses	Securing doors, gates, and other similar openings, particularly in outdoor settings where weather resistance is important.

WARRANTY AND SUPPORT

Warranty Information

This JOUNJIP Mechanical Keyless Combination Lever Handle Door Lock comes with a 1-Year Manufacturer Warranty from the date of purchase. This warranty covers defects in materials and workmanship under normal use. Please retain your proof of purchase for warranty claims.

Hi, my name is Jon.
When you call us for tech support
you will be speaking with myself or John.

We are a family owned business
with small-town values,
helping you is how we grow.



Figure 8: JOUNJIP offers American Tech Support and a 1-Year Warranty.

Customer Support

For technical assistance, troubleshooting, or any questions regarding your JOUNJIP lock, please contact our support team:

Email: Jon@JounJip.com

Phone: 310-773-0735

Our dedicated support team is available to assist you.