

Manuals+

[Q & A](#) | [Deep Search](#) | [Upload](#)

[manuals.plus](#) /

> [summina](#) /

> [summina PockRock Portable Guitar Effects Pedal User Manual](#)

summina PockRock

summina PockRock Portable Guitar Effects Pedal User Manual

Model: PockRock | Brand: summina

INTRODUCTION

The summina PockRock is a compact and versatile multi-effects processor designed for guitarists. It offers a wide range of effects, drum rhythms, and a built-in tuner, making it an ideal tool for practice, songwriting, and performance. This manual provides detailed instructions on how to set up, operate, and maintain your PockRock pedal.



Figure 1: Top view of the summina PockRock Portable Guitar Effects Pedal, showcasing its compact design and control knobs.

PACKAGE CONTENTS

- 1 x PockRock Effects Pedal
- 1 x 9V DC Power Adapter (EU Plug)
- 1 x User Manual (English)

Note: Guitar and connection cables are not included. 2 AAA batteries for portable use are also not included.

SETUP

1. Powering the Device

The PockRock pedal can be powered in two ways:

1. **DC Power Adapter:** Connect the included 9V DC power adapter to the "DC IN" jack on the pedal and plug it into a standard wall outlet.
2. **Batteries:** For portable use, the pedal can be powered by two AAA batteries (not included). Open the battery compartment on the back of the unit and insert the batteries, ensuring correct polarity.



Figure 2: Rear view of the PockRock pedal, illustrating the battery compartment and the metal buckle for waist attachment.

2. Connecting Your Equipment

Follow these steps to connect your guitar and audio output devices:

1. Connect your guitar to the **1/4" Input Jack** on the side of the pedal.
2. Connect the **1/4" Output Jack** to your amplifier or audio interface.
3. For silent practice, connect headphones to the **1/8" Headphone Jack**.
4. To play along with external audio, connect an MP3 player or other audio source to the **1/8" AUX In Jack**.

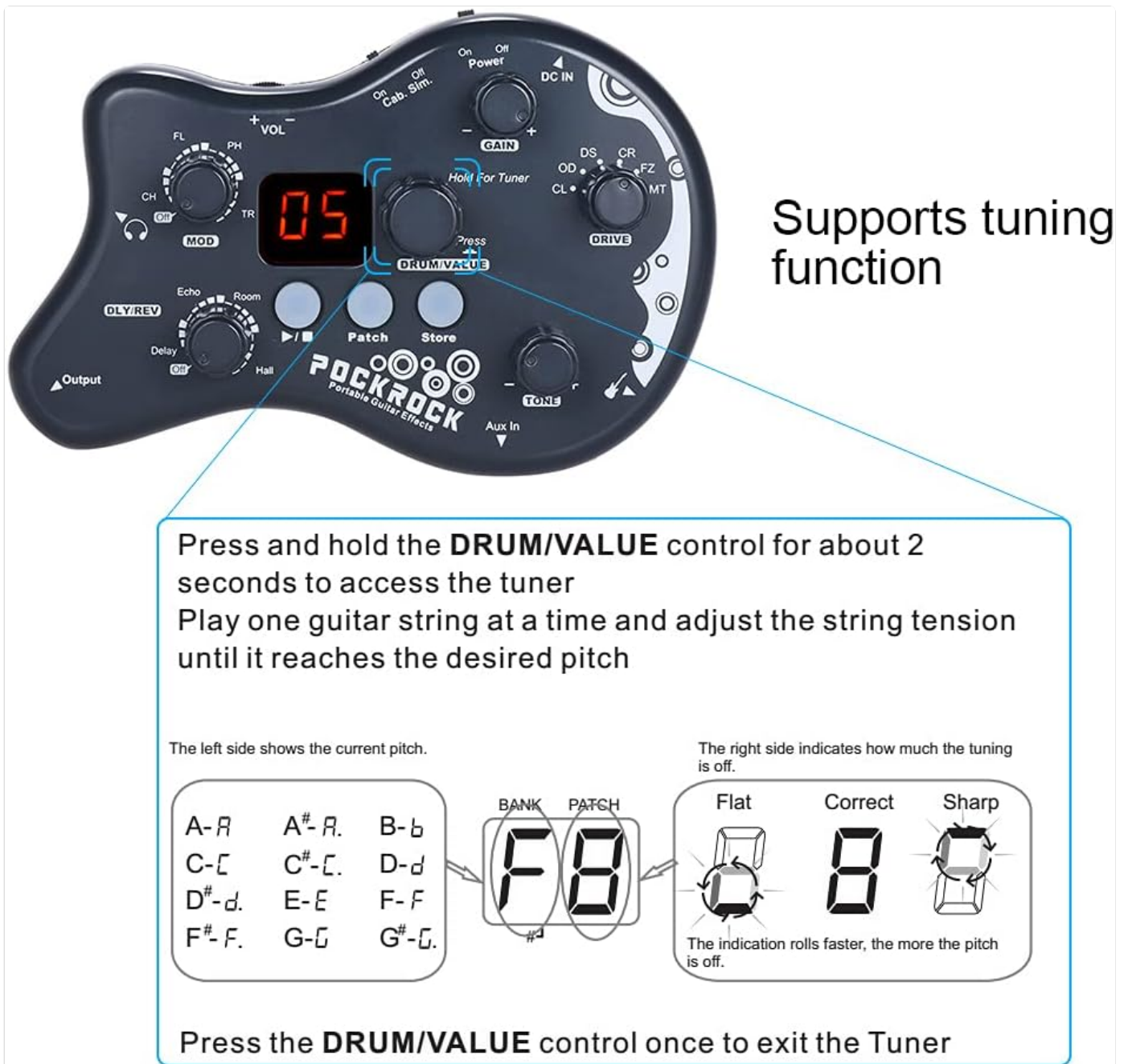


Figure 3: Detailed view of the PockRock's input (top) and output (bottom) jacks, including the 1/4" input, 1/8" Aux In, 1/4" output, and 1/8" headphone jack.

OPERATING INSTRUCTIONS

1. Controls Overview

The PockRock features several knobs and buttons for intuitive control:

- **Power Switch:** Turns the unit on/off.
- **Volume Knob (+VOL -):** Adjusts the overall output volume.
- **Effect Module Knobs:** Dedicated knobs for Drive, MOD, DLY/REV, and Drum modules.
- **Patch Button:** Cycles through preset and user patches.
- **Store Button:** Saves user-defined settings to a patch.
- **DRUM/VALUE Knob:** Controls drum rhythm selection and acts as a value control for tuner.
- **TONE Knob:** Adjusts the tone/brightness of the sound.
- **GAIN Knob:** Controls the gain level for distortion effects.

- **Cab. Sim. Switch:** Toggles cabinet simulation on/off.



Figure 4: Detailed view of the PockRock's control panel, highlighting the various knobs and buttons for effect selection and parameter adjustment.

2. Effect Modules and Types

The PockRock features 5 effect modules with a total of 15 effect types:

- **Drive Module:** Includes Clean, Overdrive, Distortion, Crunch, Fuzz, Metal.
- **MOD (Modulation) Module:** Includes Chorus, Flanger, Phaser, Tremolo.
- **DLY/REV (Delay/Reverb) Module:** Includes Delay, Echo, Sala, Reverb.
- **Drum Module:** Provides 40 different drum rhythms.

Rotate the respective module knob to select the desired effect type within that module. The LED display will show the current effect or patch number.

3. Patch Management

The pedal offers 32 patches:

- **16 Preset Patches:** Factory-set tones that cannot be overwritten.
- **16 User Patches:** Customizable slots where you can save your own effect combinations and settings.

To cycle through patches, press the **Patch** button. To save your current settings to a user patch, adjust your desired effects and then press and hold the **Store** button until the display indicates the patch has been saved.

4. Drum Rhythms

The PockRock includes 40 meticulously designed drum rhythms. To activate and select a drum rhythm, use the **DRUM/VALUE** knob. Rotate the knob to browse through the available rhythms. The tempo can often be adjusted by holding the DRUM/VALUE knob and rotating it, though specific tempo control might vary by model.

5. Tuner Function

The built-in tuner allows for accurate guitar tuning:

1. To access the tuner, press and hold the **DRUM/VALUE** control for approximately 2 seconds. The display will change to indicate tuner mode.
2. Play one guitar string at a time. The display will show the detected note and indicate if it is flat, sharp, or in tune.
3. Adjust the string tension until the display shows the desired pitch is correct.
4. To exit the tuner, press the **DRUM/VALUE** control once.



Figure 5: Visual guide to using the PockRock's integrated tuner function, showing how to activate it and interpret the display for accurate tuning.

MAINTENANCE

Proper maintenance ensures the longevity and optimal performance of your PockRock pedal.

- **Cleaning:** Use a soft, dry cloth to clean the exterior of the pedal. Avoid using abrasive cleaners or solvents, which can damage the finish and internal components.
- **Battery Replacement:** If using batteries, replace them when the power indicator dims or the unit behaves erratically. Always use fresh AAA batteries and dispose of old batteries responsibly.
- **Storage:** When not in use for extended periods, store the pedal in a cool, dry place away from direct sunlight and extreme temperatures. Remove batteries if storing for a long time to prevent leakage.
- **Handling:** Avoid dropping the pedal or subjecting it to strong impacts, as this can damage internal circuitry.

TROUBLESHOOTING

If you encounter issues with your PockRock pedal, refer to the following common problems and solutions:

Problem	Possible Cause	Solution
No sound output.	Power off. Incorrect cable connections. Volume knob turned down. Dead batteries.	Ensure power is on. Check all input/output cables are securely connected. Increase the volume using the +VOL - knob. Replace batteries or use the power adapter.
Distorted or poor sound quality.	Incorrect effect settings. Input signal too hot. Low battery power.	Adjust effect module knobs (e.g., GAIN, TONE). Reduce the output volume from your guitar or previous pedal. Replace batteries or use the power adapter.
Tuner not responding.	Not in tuner mode. No input signal.	Press and hold DRUM/VALUE for 2 seconds to enter tuner mode. Ensure guitar is connected and producing sound.

If the problem persists after trying these solutions, please contact summina customer support.

SPECIFICATIONS

Model	PockRock
Dimensions (L x W x H)	13 x 8.5 x 3 cm (5.1 x 3.3 x 1.2 inches)
Weight	130 g (0.29 lbs)
Power Supply	9V DC adapter (included) or 2 x AAA batteries (not included)
Input Jack	1/4" mono jack (for guitar)
Output Jack	1/4" mono jack
Headphone Jack	1/8" stereo jack
AUX In Jack	1/8" stereo jack
Effect Modules	5 (Drive, MOD, DLY, REV, Drum)

Effect Types	15 (Clean, Overdrive, Distortion, Crunch, Fuzz, Metal, Chorus, Flanger, Phaser, Tremolo, Delay, Echo, Sala, Reverb, Drum Rhythm)
Patches	16 Preset, 16 User
Drum Rhythms	40
Tuner	Yes



Figure 6: Diagram illustrating the physical dimensions of the PockRock pedal (13cm length, 8.5cm width, 3cm height).

WARRANTY AND SUPPORT

Warranty Information: Specific warranty terms and conditions for your summina PockRock pedal are typically provided with your purchase documentation. Please refer to the warranty card or contact your retailer for details regarding coverage and duration.

Customer Support: For technical assistance, troubleshooting beyond this manual, or inquiries about your product, please contact summina customer support through their official website or the contact information provided with your product packaging. When contacting support, please have your product model (PockRock) and purchase details ready.

Documents - summina – PockRock
no relevant documents