

FEELSO 72020

FEELSO Filtered Handheld Shower Head Instruction Manual

MODEL: 72020

Brand: FEELSO

INTRODUCTION

Thank you for choosing the FEELSO Filtered Handheld Shower Head. This manual provides essential information for the proper installation, operation, maintenance, and troubleshooting of your new shower system. Please read these instructions carefully before installation and retain them for future reference.

INCLUDED COMPONENTS

Verify that all components are present before beginning installation:

- Handheld Shower Head (with integrated 15-stage filter cartridge)
- 60-inch Stainless Steel Hose
- Angle-adjustable Bracket
- Spare Washer
- Additional Teflon Tape

15 Stage Filtration

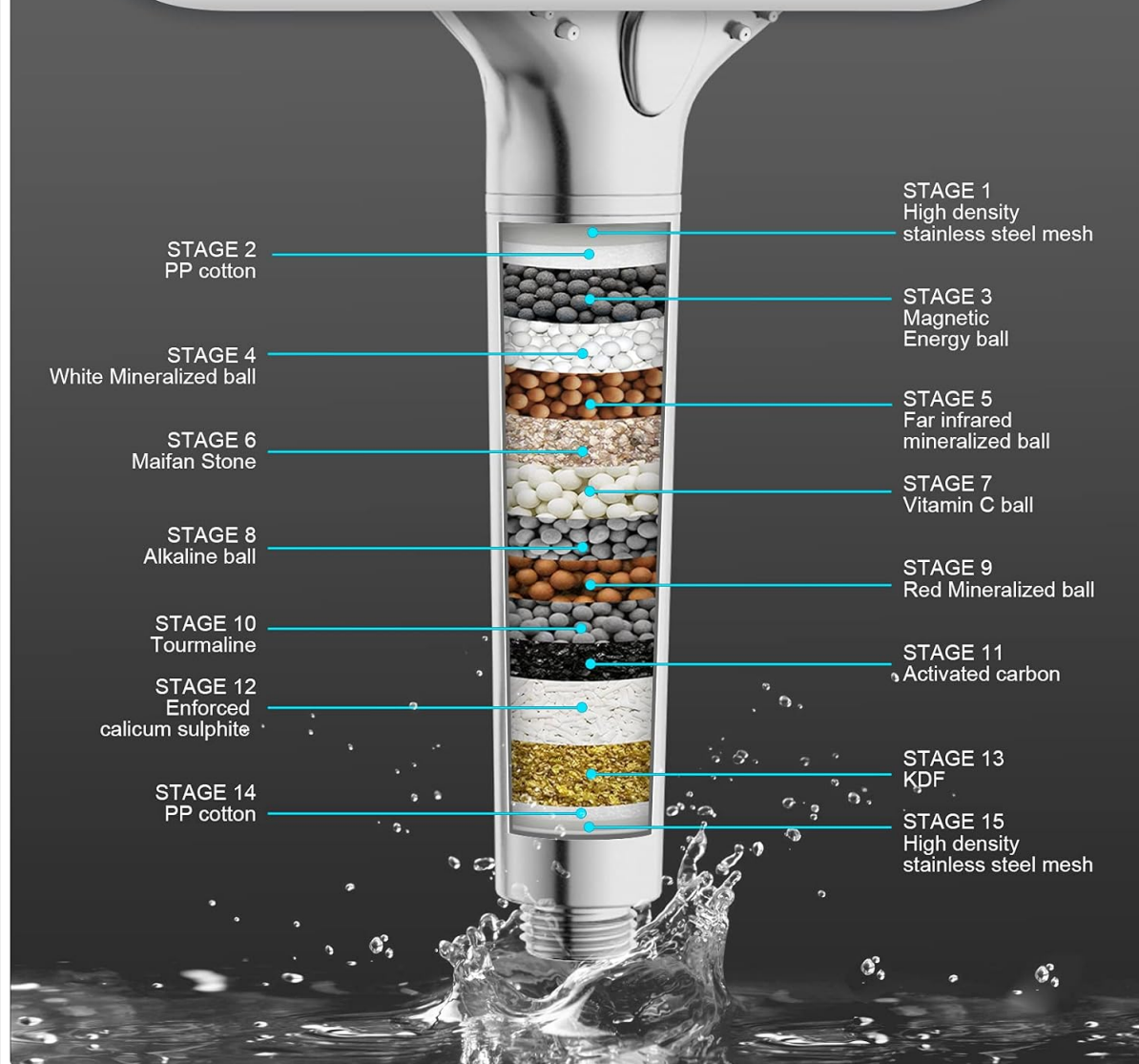


Image: Overview of the FEELSO Filtered Handheld Shower Head components.

SETUP AND INSTALLATION

No plumber is needed for installation. Follow these steps to install your new shower head:

- 1. Prepare the Shower Arm:** Unscrew and remove your existing shower head from the shower arm. Clean any residue from the shower arm threads.
- 2. Apply Teflon Tape:** Wrap the provided Teflon tape clockwise around the threads of your shower arm 3-5 times to ensure a watertight seal.
- 3. Install the Bracket:** Screw the angle-adjustable bracket onto the shower arm. Hand-tighten only. Do not overtighten.
- 4. Connect the Hose:** Attach one end of the 60-inch stainless steel hose to the outlet of the bracket. Ensure a washer is inside the hose connector. Hand-tighten.
- 5. Attach Shower Head:** Attach the other end of the hose to the handheld shower head. Ensure a washer is inside this hose connector. Hand-tighten.
- 6. Test for Leaks:** Turn on the water supply and check for any leaks. If leaks occur, tighten connections slightly or reapply Teflon tape.

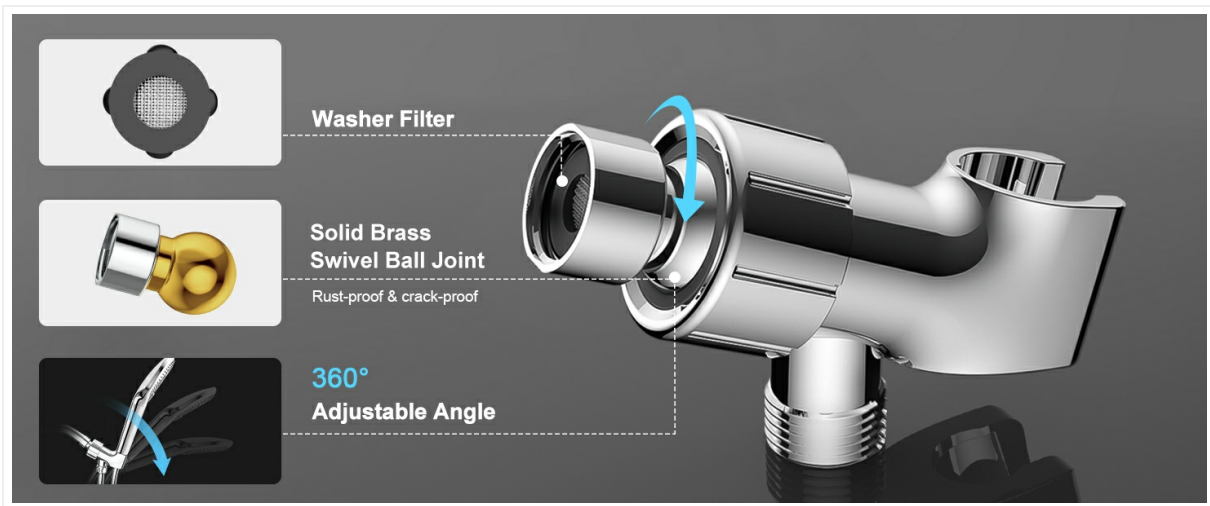


Image: Detailed view of the swivel ball joint and hose connection for installation.



Image: The 60-inch stainless steel hose, designed for durability and leak prevention.

OPERATING INSTRUCTIONS

Spray Modes

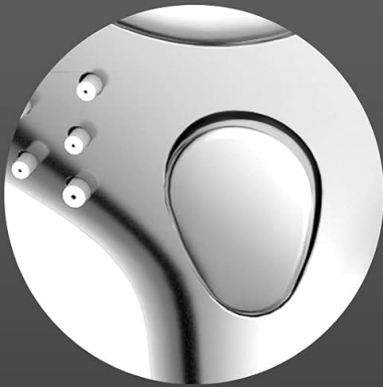
Your FEELSO shower head features three distinct spray modes to customize your shower experience:

- **Rainfall Mode:** Provides a gentle, full-coverage spray, mimicking natural rainfall.
- **Massage Mode:** Delivers a focused, invigorating stream, ideal for relieving muscle tension.
- **Mix Mode:** Combines elements of both rainfall and massage for a balanced spray.

Switching Modes

To change between spray modes, simply press the button located on the shower head. Each press will cycle through the available modes.

3 Spray Modes



One Click Switch



Rainfall



Massage



Mix

Image: Visual representation of the three spray modes and the mode selection button.



One-click switch button to change spray mode

Rainfall

Massage

Mix

Image: Close-up of the one-click switch button for easy mode selection.

High Pressure Performance

The shower head is designed to deliver a dense and powerful water flow, ensuring a satisfying shower experience even in areas with lower water pressure.

Advanced Design

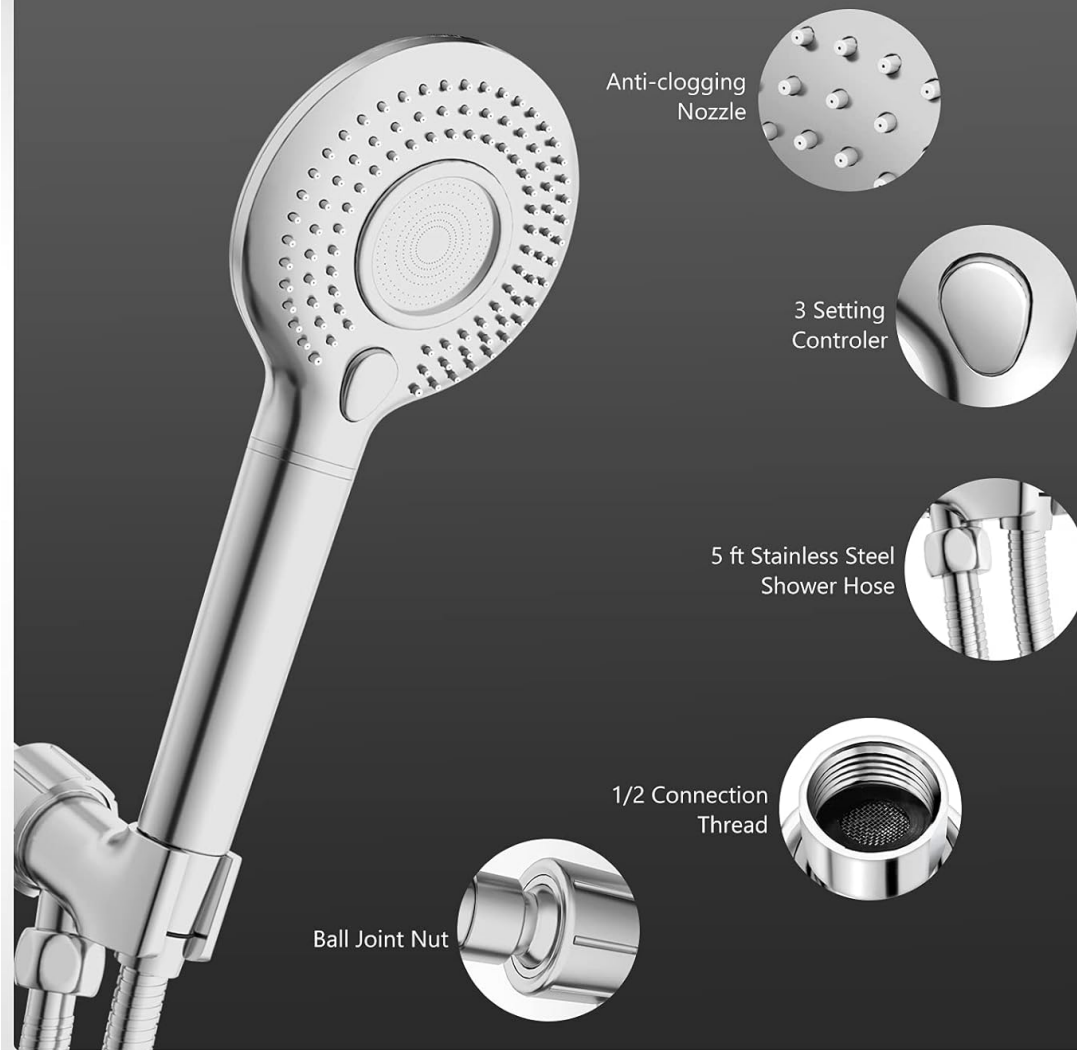


Image: Comparison of water pressure, highlighting the FEELSO shower head's strong flow.

MAINTENANCE

Filter Cartridge Replacement

The integrated 15-stage filter cartridge should be replaced every 4-6 months, depending on your local water conditions and usage, to maintain optimal filtration performance.

1. **Unscrew the Handle:** Gently twist the handle of the shower head counter-clockwise to separate it from the shower head body.
2. **Remove Old Filter:** Carefully pull out the used filter cartridge from the handle.
3. **Insert New Filter:** Insert a new FEELSO 15-stage filter cartridge into the handle, ensuring it is seated correctly.
4. **Reassemble:** Screw the handle back onto the shower head body clockwise until secure. Do not overtighten.



Image: Step-by-step guide for replacing the internal filter cartridge.

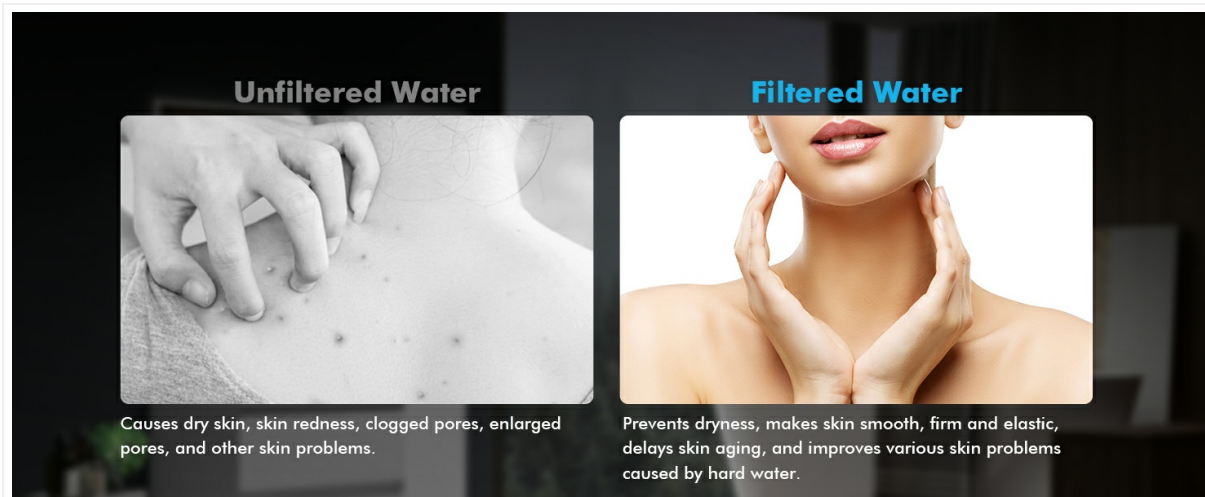


Image: Visual guide for replacing the filter, showing the shower head components.

Cleaning the Nozzles

The shower head features anti-clogging silicone nozzles. To clean them, simply rub your finger across the nozzles to dislodge any mineral buildup. For more stubborn deposits, a soft brush and a mild descaling solution can be used.

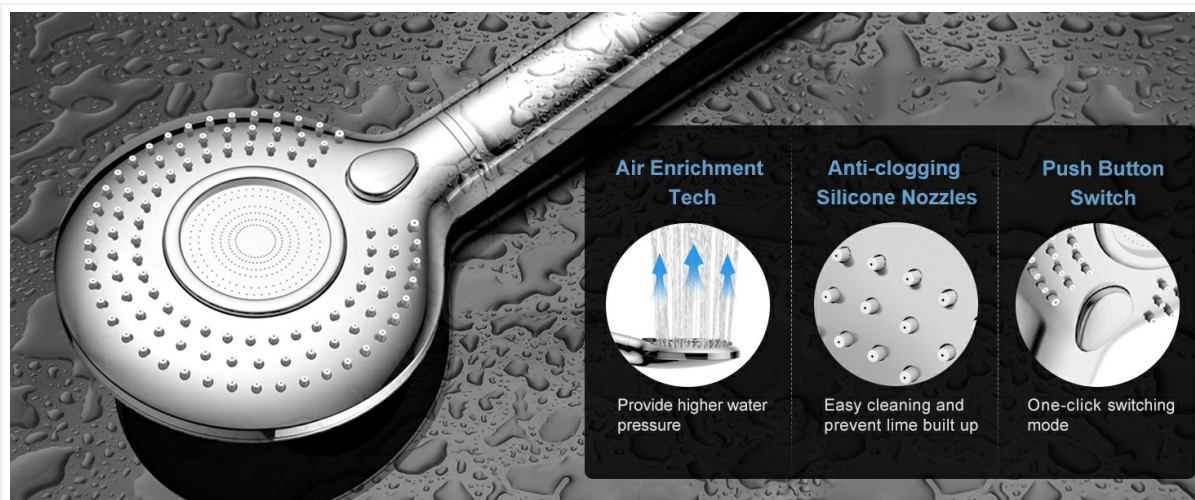


Image: Close-up of the anti-clogging silicone nozzles for easy cleaning.

TROUBLESHOOTING

Problem	Possible Cause	Solution
Low Water Pressure	Clogged nozzles; Filter cartridge needs replacement; Low household water pressure.	Clean the silicone nozzles. Replace the filter cartridge. Consult a plumber if household water pressure is consistently low.
Leaks at Connections	Loose connections; Insufficient Teflon tape; Worn washers.	Ensure all connections are hand-tight. Reapply Teflon tape. Check and replace washers if damaged.
Water Quality Not Improving	Filter cartridge is expired or heavily used.	Replace the filter cartridge. Ensure you are using genuine FEELSO replacement filters.
Difficulty Changing Spray Modes	Button mechanism is stiff or obstructed.	Ensure the button is clean and free of mineral buildup. Press firmly.

SPECIFICATIONS

- **Model:** 72020
- **Material:** Stainless Steel, Top Quality ABS
- **Finish Type:** Brushed Chrome
- **Installation Type:** Wall Mounted
- **Flow Rate:** 1.8 GPM (Gallons Per Minute)
- **Product Dimensions:** 12"L x 4.7"W
- **Number of Settings:** 3 (Rainfall, Massage, Mix)
- **Hose Length:** 60 Inches
- **Filter Stages:** 15
- **Item Weight:** 15.9 ounces

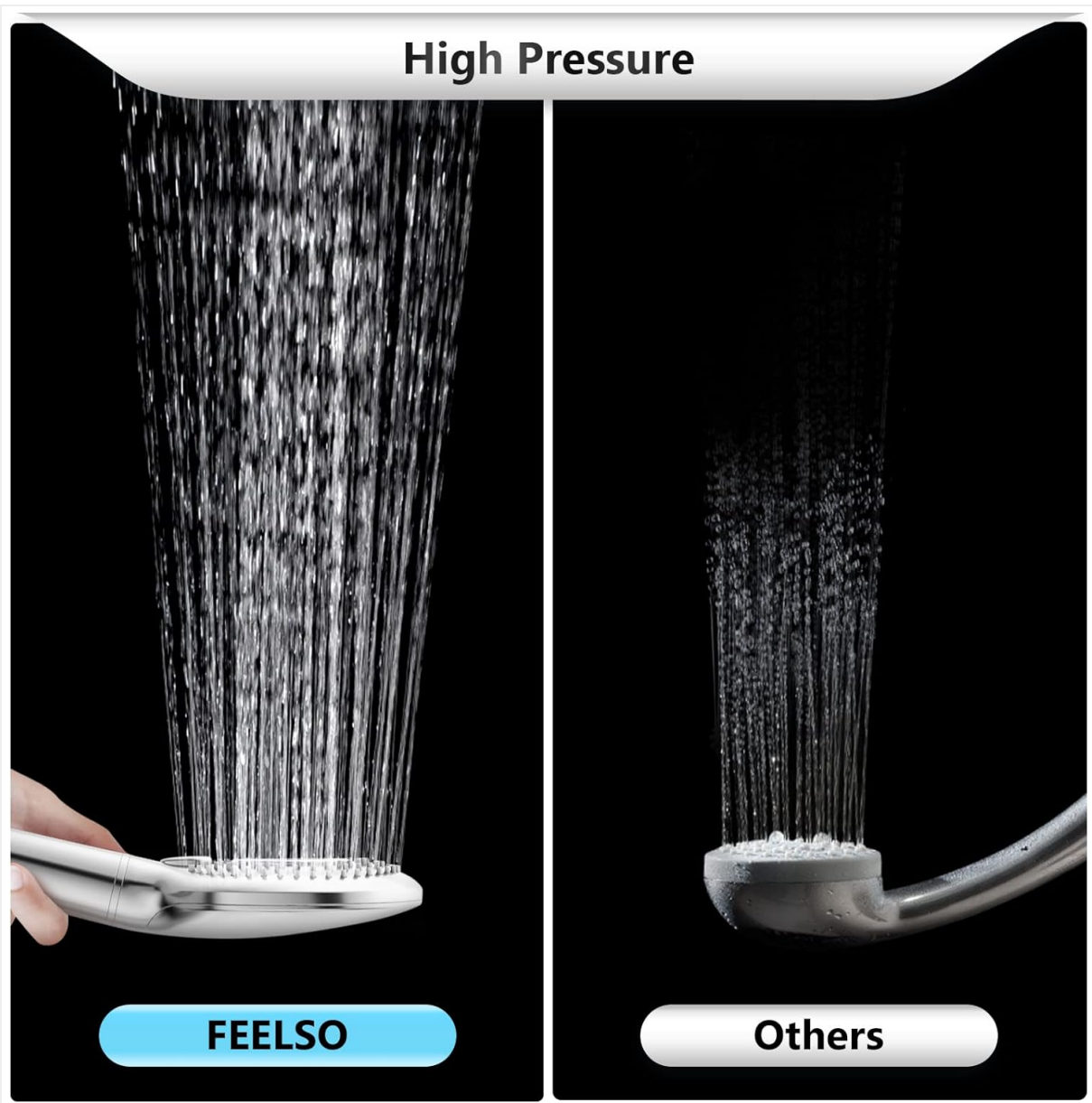


Image: Diagram illustrating the 15-stage filtration system.

The diagram shows a vertical cross-section of a showerhead's internal filtration system. It consists of several layers of different materials: a top mesh, a layer of small white beads, a layer of larger brown beads, a layer of grey granules, and a bottom mesh. Water is shown flowing through these layers. To the left, a list of substances removed from tap water is shown with icons: Algae, Chlorine (Cl₂), Heavy metal (Metals such as lead, mercury, arsenic, nickel, chromium, iron, etc.), and Microorganism. To the right, three benefits are listed with icons: Rejuvenate Effect (releasing Vitamin C and increasing oxygen content), Powerful Filtration (removing chlorine, fluoride, heavy metals, and sediments), and Remove Sediment (capturing sand and lime scale).

Filtered water

- Algae
- Chlorine
- Heavy metal
(Metals such as lead, mercury, arsenic, nickel, chromium, iron, etc.)
- Microorganism

Tap water

Rejuvenate Effect
Release Vitamin C and other beneficial elements, increase the oxygen content in the water. Helps nourish skin, hair and nails

Powerful Filtration
Medias like KDF, Calcium Sulfite and Activated Carbon to remove chlorine, fluoride, heavy mental sediments and other harmful impurities

Remove Sediment
Capture large or small sediment, sand and lime scale and prevent them to go into the shower head

Image: Explanation of the filtration benefits, including removal of chlorine, heavy metals, and sediment.

WARRANTY AND SUPPORT

FEELSO products come with a **1-year warranty** from the date of purchase. This warranty covers

manufacturing defects and ensures hassle-free return or replacement.

For any questions, concerns, or support needs, please contact our customer service team. We are committed to providing the best customer service within 24 hours.

Email: sales05@feelsolife.com



Image: FEELSO customer support team ready to assist.