

MT-VIKI MT-WX02

Wireless HDMI Transmitter and Receiver User Manual

Brand: MT-VIKI

Model: MT-WX02

PRODUCT OVERVIEW

The MT-VIKI Wireless HDMI Transmitter and Receiver Kit (Model MT-WX02) provides a convenient solution for extending HDMI and VGA signals wirelessly. This kit supports 4K HDMI input and 1080P output, allowing for mirroring of HD video on dual monitors (one HDMI and one VGA) up to 165 feet away from the source. Designed for ease of use, it requires no software installation and is suitable for various applications including home theater, conferences, offices, and educational environments.



Image: The MT-VIKI Wireless HDMI Transmitter (right) and Receiver (left) units, showcasing their compact design and antennas on the receiver.

Key features include:

- Wireless transmission up to 165 feet (50 meters).
- Supports 4K HDMI input and 1080P output at 60Hz.
- Dual output capability: 1 HDMI and 1 VGA at 1080P @60Hz.
- Plug-and-play operation with no software or Wi-Fi required.
- Aluminum alloy shell for durability.
- Low latency for smooth video and audio transmission.

PACKAGE CONTENTS

Before proceeding with the setup, please ensure all components are present in the package:

- 1 x MT-VIKI Wireless HDMI Transmitter
- 1 x MT-VIKI Wireless HDMI Receiver
- 2 x USB Power Cables (Note: Power adapters are not included and must be 5V 1A/2A)
- 1 x User Manual (this document)



Image: Contents of the MT-VIKI Wireless HDMI Extender Kit, including the transmitter, receiver, power cables, and user manual, displayed alongside the product packaging.

SETUP INSTRUCTIONS

Follow these steps to set up your MT-VIKI Wireless HDMI Extender Kit:

1. Connect the Receiver (RX):

Connect the MT-VIKI Receiver unit to your display device (TV, monitor, or projector) using an HDMI cable. If using VGA, connect a VGA cable from the receiver to your display. Ensure the display is set to the correct input source (HDMI or VGA).

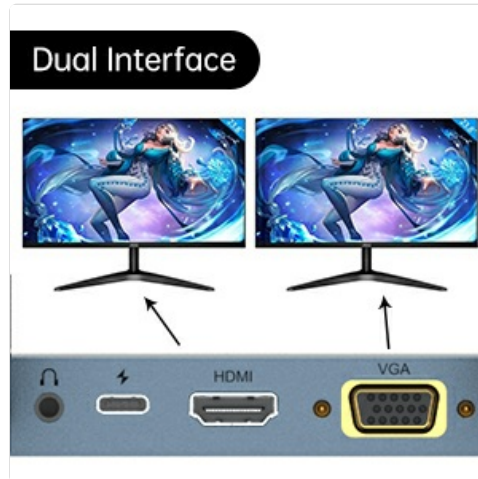


Image: Detail of the receiver's HDMI and VGA output ports, along with the power input and audio jack.

2. Power the Receiver (RX):

Connect one of the provided USB power cables to the receiver's power input port. Connect the other end of the USB cable to a 5V 1A/2A USB power adapter (not included) or a USB port on your display device that provides sufficient power. The receiver requires stable power to function correctly.

3. Connect the Transmitter (TX):

Connect the MT-VIKI Transmitter unit to the HDMI output port of your source device (laptop, PC, game console, set-top box, camera, etc.).

4. Power the Transmitter (TX):

Connect the second USB power cable to the transmitter's power input port. Connect the other end to a 5V 1A/2A USB power adapter (not included) or a USB port on your source device. Ensure the transmitter receives adequate power.



Image: A finger pressing the central button on the MT-VIKI Wireless HDMI Transmitter, indicating its simple operation.

5. Automatic Pairing:

Once both the transmitter and receiver are powered on, they will automatically pair within a few seconds. No manual pairing or software installation is required. The indicator lights on both units will confirm a successful connection.

Plug and Play, 2 Way Connection diagram



Image: A diagram illustrating two connection methods: direct HDMI connection from source to transmitter, and wireless connection from transmitter to receiver, which then outputs to HDMI or VGA displays. Compatible source devices include PCs, laptops, game consoles, and cameras.

OPERATING INSTRUCTIONS

The MT-VIKI Wireless HDMI Extender Kit is designed for straightforward operation:

- **Single Source, Dual Display:**

The receiver unit supports simultaneous output to both an HDMI display and a VGA display. This allows you to mirror your source content on two different screens at 1080P @60Hz.

HDMI + VGA Dual Screen

Support HDMI,VGA Connection of Equipment. Single/Simultaneous Output



Image: A laptop connected to the MT-VIKI Wireless HDMI Extender, demonstrating its ability to output simultaneously to an HDMI television and a VGA monitor, displaying the same content on all three screens.

- **Wireless Transmission Range:**

The system operates on both 2.4GHz and 5GHz frequencies, providing stable wireless transmission up to 165 feet (50 meters) with low latency. Optimal performance is achieved within this range and with minimal obstructions.

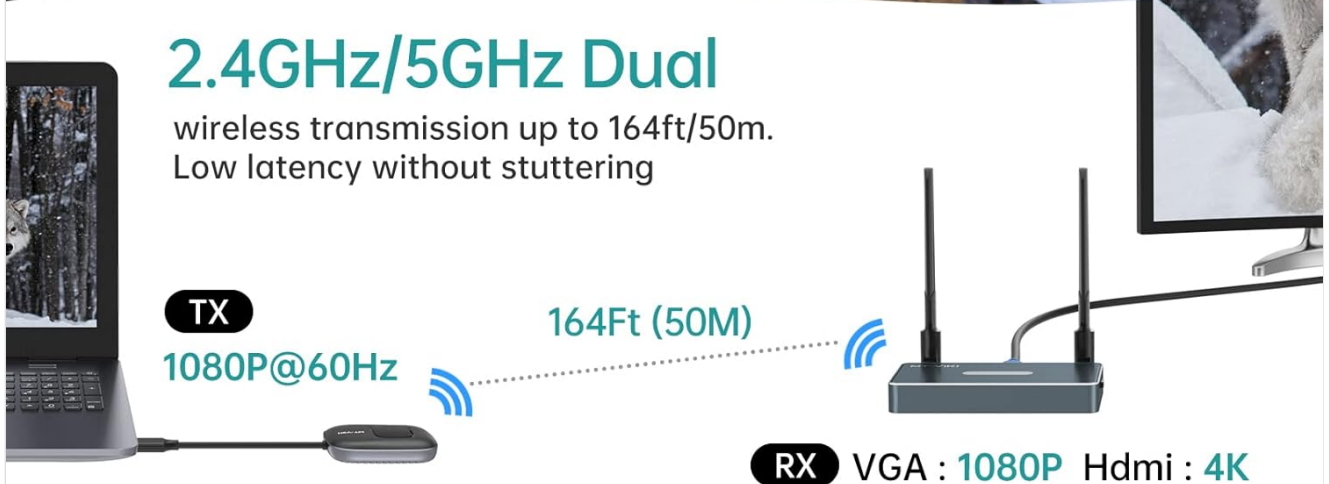


Image: A diagram illustrating the wireless transmission capability of the MT-VIKI extender, showing a laptop (TX) transmitting 1080P@60Hz signal wirelessly to the receiver (RX) up to 164ft (50m), with the receiver outputting to VGA at 1080P and HDMI at 4K.

- **Multiple Transmitters to One Receiver:**

Up to 8 transmitters can be connected to a single receiver simultaneously. This feature is ideal for conference rooms or educational settings where multiple users need to share their screens. Simply press the button on the desired transmitter to switch the active display source.

Multiple Transmitters to One Receiver

8 transmitters can be connected to 1 receiver at the same time,
one-click switch, does not interfere with each other,
and multiple screens can be shared.



Image: A conference room setting demonstrating multiple laptops connected wirelessly to a single MT-VIKI receiver, which is displaying content on a large wall-mounted screen. This illustrates the "Multiple Transmitters to One Receiver" functionality.

- **Smartphone Screen Casting:**

The receiver can support up to 4K@30Hz resolution when screen casting directly from a smartphone, provided both the smartphone and the monitor support 4K resolution.

MAINTENANCE AND CARE

To ensure the longevity and optimal performance of your MT-VIKI Wireless HDMI Extender Kit, please follow these maintenance guidelines:

- **Cleaning:** Use a soft, dry cloth to clean the surfaces of the transmitter and receiver units. Avoid using liquid cleaners, aerosols, or abrasive materials, as these can damage the devices.
- **Storage:** When not in use for extended periods, store the units in a cool, dry place away from direct sunlight and extreme temperatures.
- **Power Disconnection:** It is recommended to disconnect the power supply from both the transmitter and receiver when you finish using them to protect the devices and conserve energy.

- **Handling:** Handle the units with care. Avoid dropping them or subjecting them to strong impacts, which can damage internal components.
- **Ventilation:** Ensure the units have adequate ventilation and are not covered, especially during operation, to prevent overheating.

TROUBLESHOOTING

If you encounter issues with your MT-VIKI Wireless HDMI Extender Kit, please refer to the following common problems and solutions:

Problem	Possible Cause	Solution
No signal on display.	Units not powered on. Incorrect input source selected on display. Transmitter/Receiver not paired. Cables loose or faulty.	Ensure both transmitter and receiver are powered by 5V 1A/2A adapters. Verify the display is set to the correct HDMI or VGA input. Check indicator lights; if not solid, power cycle both units. Ensure all HDMI/VGA/USB cables are securely connected.
Video flickering or intermittent signal.	Weak wireless signal due to distance or obstructions. Interference from other wireless devices. Insufficient power supply.	Reduce the distance between the transmitter and receiver. Minimize physical obstructions (walls, furniture). Move units away from other wireless devices (Wi-Fi routers, microwaves). Ensure power adapters provide sufficient and stable 5V 1A/2A power.
Audio not working or out of sync.	Audio settings on source device. Display audio settings. Minor latency (expected with wireless transmission).	Check audio output settings on your source device. Ensure display volume is up and not muted. While minimal, some latency is inherent in wireless systems; this is typically not noticeable for video playback but may be for fast-paced gaming.
Transmitter/Receiver feels hot.	Normal operation. Poor ventilation.	The aluminum alloy shell helps dissipate heat; some warmth is normal. Ensure units are placed in a well-ventilated area and not covered.

If the problem persists after trying these solutions, please contact MT-VIKI customer support for further assistance.

SPECIFICATIONS

Feature	Detail
Model Number	MT-WX02
Connectivity Technology	Wireless HDMI & VGA

Feature	Detail
Wireless Transmission Range	Up to 165 feet (50 meters)
Supported HDMI Input Resolution	Up to 4K
Supported Output Resolution	1080P @60Hz (HDMI & VGA)
Smartphone Screen Casting Output	Up to 4K@30Hz (requires 4K smartphone and monitor)
Dual Output	1 x HDMI, 1 x VGA
Material	Aluminum Alloy Shell
Power Supply	5V 1A/2A (USB power adapter not included)
Product Dimensions	36 x 72 x 132 inches (Note: This dimension seems unusually large for the product, likely a typo in source data. Refer to product images for actual size.)
Item Weight	15.1 ounces
Audio Output Mode	Stereo, Surround
Video Encoding	H.264, MPEG-4

WARRANTY AND SUPPORT

MT-VIKI products are designed for reliability and performance. For information regarding product warranty, please refer to the warranty card included with your purchase or visit the official MT-VIKI website.


For technical support, troubleshooting assistance, or any inquiries regarding your MT-VIKI Wireless HDMI Extender Kit, please contact the seller directly or visit the MT-VIKI brand store on Amazon:


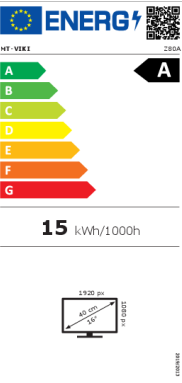
Seller: MT-ViKI Direct

MT-VIKI Brand Store: [Visit MT-VIKI Store on Amazon](#)

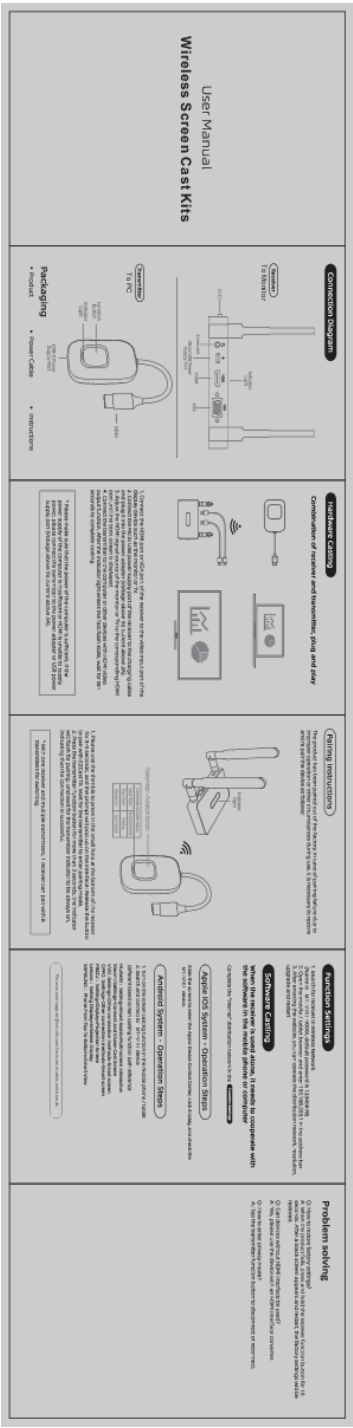
Please have your product model number (MT-WX02) and purchase details ready when contacting support.

Related Documents

	<p>MT-HD0112 HDMI Video Wall Controller User Manual</p> <p>User manual for the MT-VIKI MT-HD0112 HDMI Video Wall Controller, detailing its features, connection diagrams, panel layout, product parameters, operations, and maintenance for 1080p@60Hz video wall splicing.</p>
---	---

	<p>MT-SW1601 16x1 HDMI Multi-Viewer User Manual</p> <p>User manual for the MT-SW1601 16x1 HDMI Multi-Viewer, detailing product introduction, features, interface, connection diagram, split modes, IR remote instructions, and applications.</p>
	<p>MT-VIKI Z80A Energy Efficiency Label</p> <p>EU Energy Label details for the MT-VIKI Z80A monitor, including its energy efficiency rating (A), annual consumption (15 kWh/1000h), and screen specifications (1920x1080 resolution, 16-inch diagonal).</p>

Documents - MT-VIKI – MT-WX02



MT WX02 V1 1 20210809 cdr Administrator Wireless Screen Cast Kits VIKI To Monitor PC Please email support@mt viki for more models and brands WX02 V1 User Manual mt net 2022 10 ||| To Monitor Wireless Screen Cast Kits To PC Please email support mt-viki.com for more models and brands ... lang: score:21 filesize: 327.1 K page_count: 1 document date: 2021-08-09



[pdf] Declaration of Conformity MT WX02 WX02C V1 1 20220621 cdr Administrator Doc Wireless USB CTransmitter Receiver 50 meters 1080P mt viki net 2024 08 ||| ... lang: score:16 filesize: 971.76 K page_count: 1 document date: 2022-06-21