

[Manuals.plus](#) /

> [HomeMount](#) /

> HomeMount Golf Cart Phone Holder Instruction Manual

HomeMount B09DCD8JKC

HomeMount Golf Cart Phone Holder Instruction Manual

Model: B09DCD8JKC

1. PRODUCT OVERVIEW

The HomeMount Golf Cart Phone Holder is designed to securely mount your smartphone to a golf cart, providing easy access during your game. It features a rotatable design and is compatible with various phone sizes when used with an appropriate phone case and adapter.

Key Features:

- Secure phone retention to prevent accidental drops.
- Easy access to your phone without interruption.
- Adjustable design to fit a wide range of phone sizes (with case).
- Durable construction from high-quality polycarbonate material.
- Designed to fit various golf cart types.
- 360-degree rotation for optimal viewing angles.
- Quick release mechanism for easy phone removal.

2. PACKAGE CONTENTS

Please ensure all components are present before proceeding with installation:

- Golf Cart Phone Holder Bracket with Straps
- EasyMount Adapter (for phone case)
- Phone Ring Finger Holder (optional accessory)

3. INSTALLATION INSTRUCTIONS

Follow these steps to properly install your HomeMount Golf Cart Phone Holder:

1. **Prepare your phone case:** Before using the holder, ensure your phone is in a protective case. The EasyMount adapter is designed to attach to a phone case, not directly to the phone. Attaching directly to an iPhone may leave an adhesive mark.
2. **Attach the EasyMount adapter to your phone case:** Use the provided installation template (if included) to accurately position and attach the EasyMount adapter to the back of your phone case. Press firmly to ensure a secure bond.
3. **Install the bracket on the golf cart railing:** Position the phone holder bracket on a suitable railing or bar of your golf cart. Secure it by tightening the adjustable straps firmly around the railing. Ensure the bracket is stable and does not move.
4. **Attach your phone to the mount:** Align the EasyMount adapter on your phone case with the receiver on the golf cart bracket. Gently push until it clicks into place, indicating a secure connection.

Installation Steps

Note: Please assure to install a phone case before use of the product.
There would be an adhesive mark left if the adapter is directly attached to iPhone.

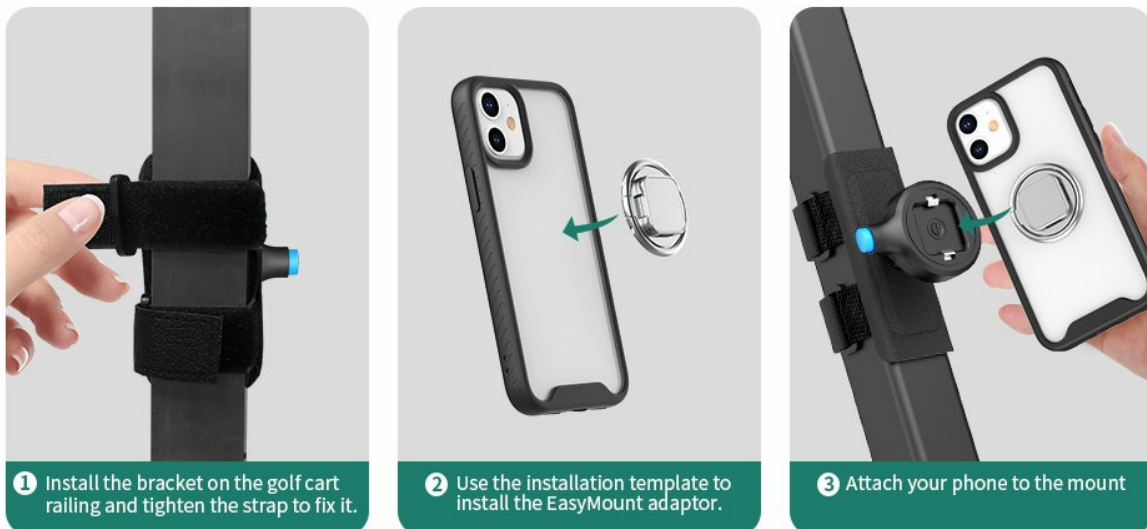


Image: Detailed steps for attaching the EasyMount adapter to a phone case and securing the bracket to a golf cart railing.

Your browser does not support the video tag.

Video: Demonstrates the installation process of the HomeMount Golf Cart Phone Holder, including attaching the adapter to a phone case and mounting the holder to a golf cart.

4. OPERATING INSTRUCTIONS

Once installed, the phone holder offers convenient and secure phone usage:

4.1. Adjusting Phone Orientation

The holder features a 360-degree rotatable ball joint. You can adjust your phone to any desired orientation (portrait or landscape) for optimal viewing by simply rotating the phone while it is mounted.



Image: Illustrates the 360-degree rotation capability of the phone holder.

4.2. Quick Release Function

To quickly remove your phone from the holder, press the blue button located on the side of the mount. This will disengage the locking mechanism, allowing you to easily detach your phone.

Keeping stable under various road conditions.



Image: Shows how to use the blue quick-release button to remove the phone.

4.3. Secure Usage

The HomeMount Golf Cart Phone Holder is designed to keep your phone stable under various golf course conditions, including different speeds and terrains. Always ensure your phone is securely clicked into place before driving the golf cart.

Keeping stable under various road conditions.



Image: Depicts the phone holder maintaining stability on a golf cart across different terrains.

5. MAINTENANCE AND CARE

To ensure the longevity and optimal performance of your phone holder, follow these simple care guidelines:

- **Cleaning:** Wipe the holder with a soft, damp cloth to remove dust and dirt. Avoid using harsh chemicals or abrasive cleaners.
- **Storage:** When not in use for extended periods, store the phone holder in a cool, dry place away from direct sunlight.
- **Inspection:** Periodically check the straps and mounting mechanism for any signs of wear or damage. Replace if necessary to ensure secure attachment.

6. TROUBLESHOOTING

If you encounter any issues with your HomeMount Golf Cart Phone Holder, consider the following:

- **Phone not holding securely:**
 - Ensure the EasyMount adapter is firmly attached to your phone case and fully clicked into the holder.
 - Verify that the straps on the golf cart railing are tightened sufficiently.
- **Holder feels loose on the golf cart:**
 - Re-tighten the straps around the golf cart railing.
 - Ensure the railing surface is clean and free of debris that might prevent a secure grip.
- **Difficulty rotating the phone:**
 - Check for any obstructions around the ball joint.
 - Ensure the phone is not being held too tightly, which might restrict movement.

If problems persist, please contact HomeMount customer support for assistance.

7. SPECIFICATIONS

Brand	HomeMount
Model Number	B09DCD8JKC
Color	Black
Compatible Devices	Smartphones (with case and adapter)
Mounting Type	Strap/Adhesive (for adapter)
Special Features	Adjustable, Rotatable, Quick Release
Compatible Vehicle Type	Golf Cart
Material	Polycarbonate

8. WARRANTY AND SUPPORT

For warranty information or technical support, please refer to the official HomeMount website or contact their customer service directly. Keep your purchase receipt as proof of purchase.

HomeMount Official Website: [HomeMount Store on Amazon](#)