

EASYGUARD ETO001

EASYGUARD ETO001 Foot Kick Trunk Tailgate Opener User Manual

Model: ETO001

1. PRODUCT OVERVIEW

The EASYGUARD ETO001 is a foot-activated system designed to open or close your vehicle's trunk or tailgate automatically. This system enhances convenience by allowing hands-free operation, particularly useful when your hands are full.

Important Prerequisites:

- Your vehicle must be equipped with an original or aftermarket electric tailgate lift that can automatically pop up or close the trunk. This product will not function without an existing electric tailgate lift system.
- Your vehicle should have an original or aftermarket smart key Passive Keyless Entry (PKE) system. This system allows the vehicle to automatically unlock or release the trunk when you approach it. If your vehicle lacks a PKE system, you must manually disarm or unlock the vehicle before using the foot kick function.



Kick to pop up or close the trunk



Fit for vehicle with original or aftermarket electric tail gate trunk opener & smart key PKE system

Figure 1: Hands-free trunk operation via foot kick and smart key PKE system.

2. COMPATIBILITY

The ETO001 system is designed for DC12V vehicles, including sedans, compact cars, SUVs, and MPVs. It is not compatible with DC24V vehicles.

Refer to the compatibility chart below to ensure your vehicle meets the necessary requirements for proper function.

Compatibility

Type	Description	Work or not
Vehicle Type	SUV, hatch-back, MPV, Sedan, compact	✓
With electric tail gate + PKE	Approach & kick to pop up & close the trunk	✓
With electric tail gate but no PKE	Disarm/unlock first, then kick to pop up & close the trunk	✓
No electric tail gate	Can't kick to pop up or close the trunk	x

How to use?



Right: Kick forth & back

Wrong: Kick left & right

After the 1st time kick, please kick your foot 20 seconds later to kick the foot again

Figure 2: Compatibility requirements for the ETO001 system.

- **Vehicle Type:** SUV, Hatchback, MPV, Sedan, Compact (Compatible)
- **With Electric Tailgate + PKE:** Approach & kick to pop up/close trunk (Compatible)
- **With Electric Tailgate but no PKE:** Disarm/unlock first, then kick to pop up/close trunk (Compatible)
- **No Electric Tailgate:** Cannot kick to pop up/close trunk (Not Compatible)

3. PRODUCT COMPONENTS

The EASYGUARD ETO001 system includes the following components:

The accessories



Trunk sensor



Trunk sensor



Main wire harness



Backup diode

Figure 3: Trunk Sensors (x2)

The control module



Figure 4: Control Module

The accessories



Trunk sensor



Trunk sensor



Main wire harness



Backup diode

Figure 5: Main Wire Harness

The accessories

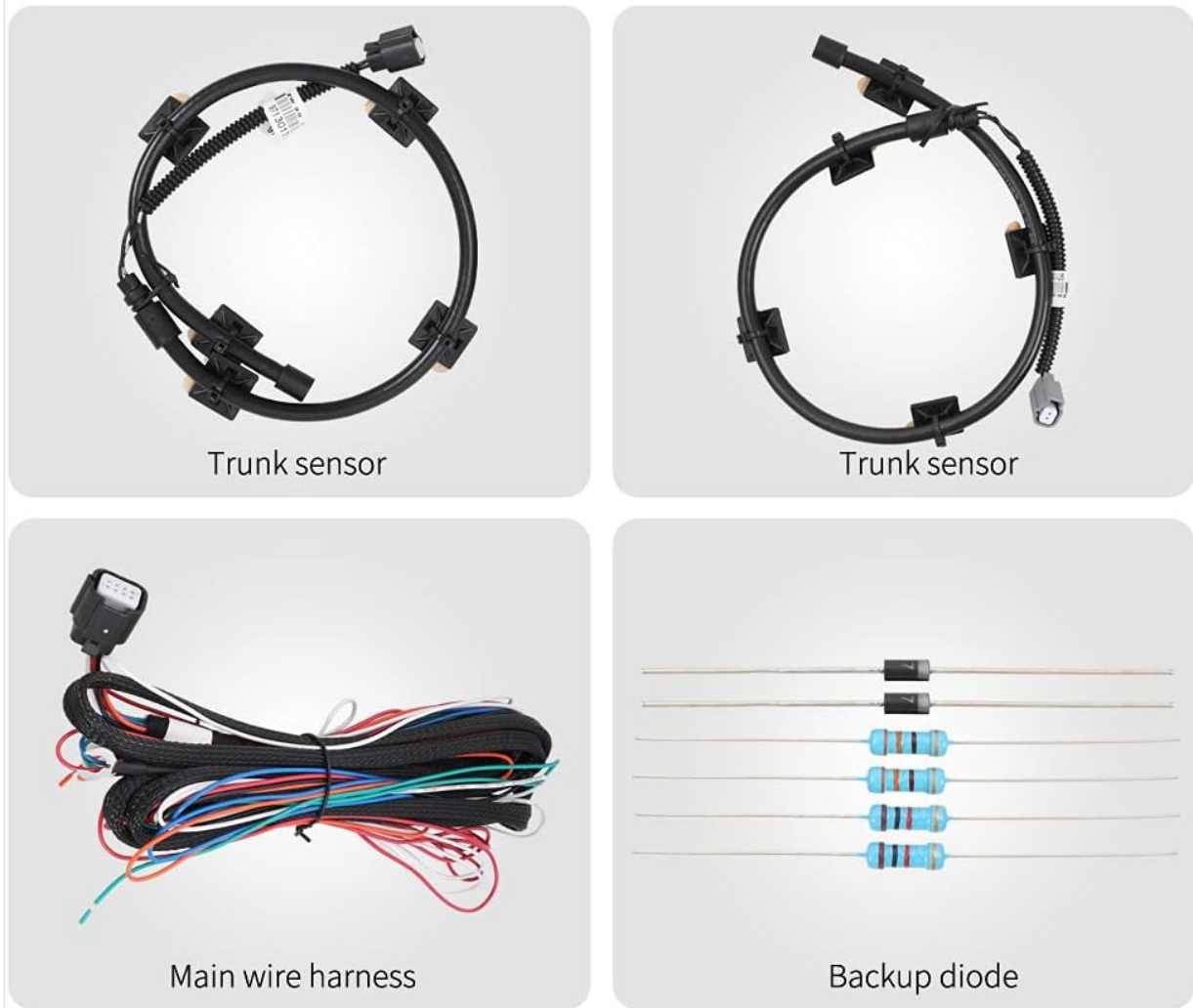


Figure 6: Backup Diodes

4. INSTALLATION INSTRUCTIONS

Professional installation is recommended. Ensure the vehicle's power is disconnected before beginning installation.

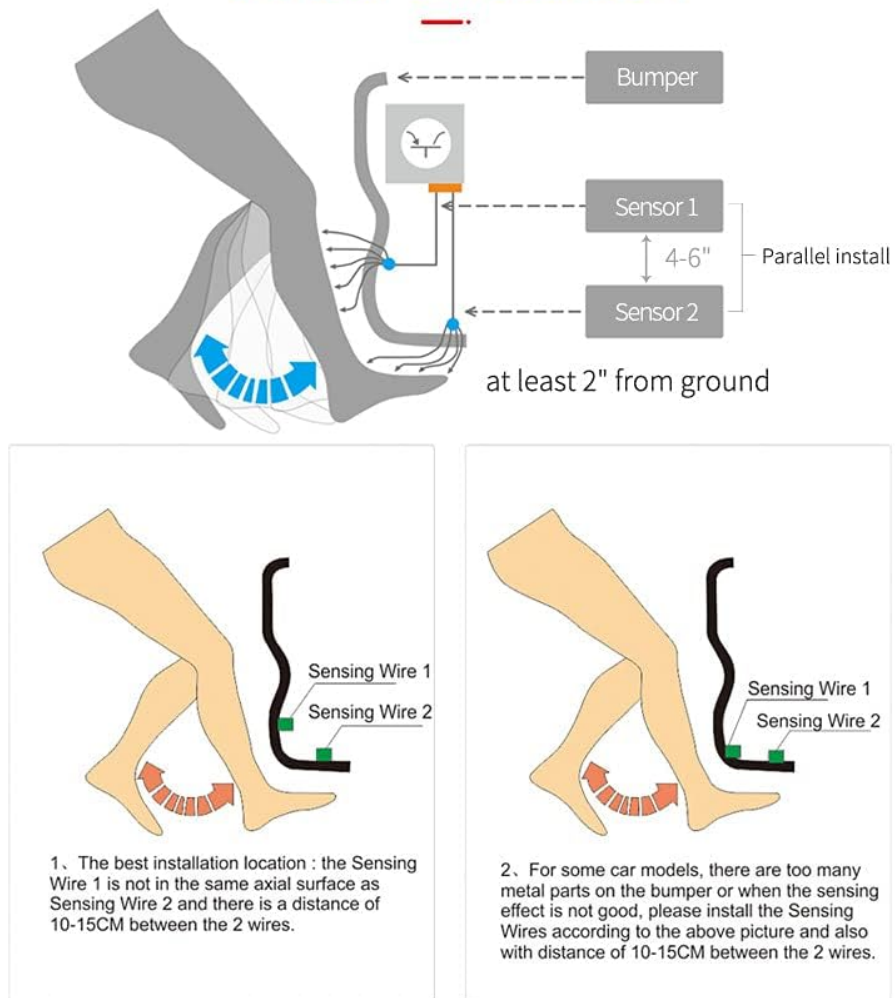
4.1 Control Module Placement

- The control module should be installed in a secure location, preferably within the bumper area.
- **DO NOT** stick the control module or sensing wires on any metal part or anti-collision pipe. Metal interference can significantly reduce sensing performance.
- The control module is IP67 waterproof; however, **DO NOT** open its housing.

4.2 Sensor Wire Installation

The sensing wires are crucial for detecting foot movement. Proper placement is essential for reliable operation.

Sensor Installation

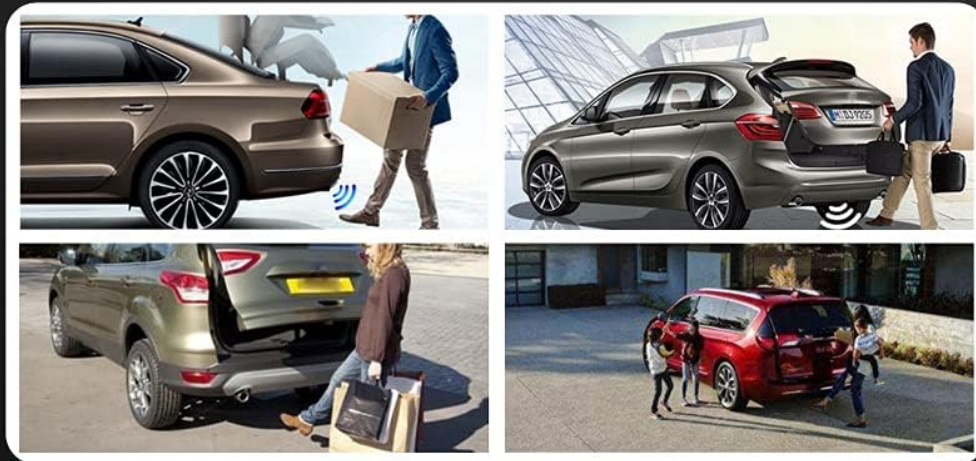


Note:

1. The 2 sensors should be parallel with each other with a distance of 4-6 inch(10-15cm).
2. The sensor should at least 5cm height from the ground.

Figure 7: Sensor installation guidelines and foot kick technique.

- The two sensing wires should be installed parallel to each other.
- Maintain a distance of 4-6 inches (10-15 cm) between the two sensing wires.
- The sensors should be positioned at least 2 inches (5 cm) from the ground.
- For optimal performance, ensure the sensing wires are not installed on metal parts. If your car has many metal parts in the bumper area, adjust the placement to find the best sensing effect.



Can work with sedan, compact, SUV, MPV etc.



IP67 waterproof control module

Figure 8: Routing of sensing wires and effective sensor detection range.

Important Installation Notes:

- The sensor detecting range is approximately 19.69 inches (50 cm). Ensure your foot is within this range when performing the kick action.
- When installing, lift your foot and kick towards the middle of the rear bumper. Your foot should be 8-15 cm from the bumper.
- Keep the sensor away from any metal parts or anti-collision pipes as far as possible to prevent interference.

5. OPERATING INSTRUCTIONS

Once installed correctly, operate the ETO001 system as follows:

5.1 Opening the Trunk

1. Ensure the vehicle's ACC (Accessory) power is turned off.
2. Disarm the car. If your vehicle has a smart key PKE system, the trunk will automatically unlock as you approach. If not, manually unlock the vehicle first.

3. Kick your foot under the detect sensor within 1 meter of the car's rear bumper. Perform a quick forth-and-back motion (as shown in Figure 7).
4. The trunk will automatically pop up/open.

5.2 Closing the Trunk

1. With the trunk open, perform the same foot kick action under the detect sensor.
2. The electric tailgate will automatically close. This function requires an electric tailgate lift system.

5.3 Usage Guidelines

- The foot-lifting and foot-lowering action must be completed within 1 second. Incorrect timing may be treated as a wrong signal by the system.
- After each successful foot kick, wait at least 20 seconds before performing another kick action. This prevents unintended repeated operations.
- The smart key should be within 1 meter of the car's rear bumper for the system to function correctly (if PKE is used).

6. MAINTENANCE

The EASYGUARD ETO001 system is designed for durability and requires minimal maintenance.

- **Keep Sensors Clean:** Periodically inspect the sensor area under the bumper and clean off any dirt, mud, or debris that may accumulate. Excessive build-up can interfere with sensor detection.
- **Avoid Physical Damage:** Ensure the control module and sensing wires are protected from physical impact or damage.
- **Do Not Open Control Module:** The control module is sealed and IP67 waterproof. Opening the housing will void the warranty and may damage the internal components.

7. TROUBLESHOOTING

If you experience issues with your ETO001 system, refer to the following troubleshooting guide:

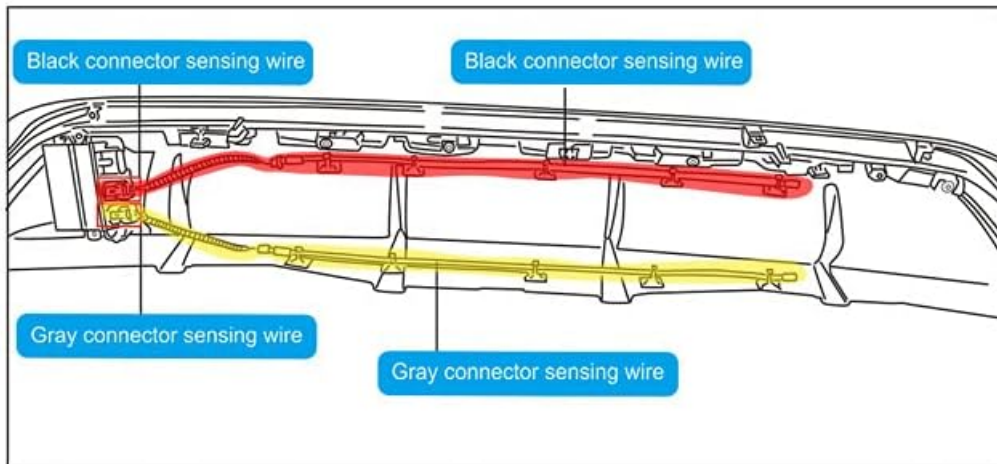
Problem	Possible Cause	Solution
Trunk does not open/close with foot kick.	<ul style="list-style-type: none"> • Vehicle lacks electric tailgate lift. • Vehicle not disarmed/unlocked (no PKE or PKE out of range). • Incorrect foot kick motion or timing. • Sensors obstructed or improperly installed. • Too soon after previous kick. 	<ul style="list-style-type: none"> • Verify vehicle has electric tailgate lift. • Ensure vehicle is disarmed/unlocked. If PKE, ensure smart key is within 1 meter. • Perform a quick forth-and-back kick within 1 second. • Check sensor placement (not on metal, 4-6 inches apart, >2 inches from ground). Clean sensors. • Wait at least 20 seconds between kick attempts.

Problem	Possible Cause	Solution
Trunk opens/closes unintentionally.	<ul style="list-style-type: none"> • Sensor sensitivity too high or improper placement. • Interference from metal objects or other vehicle systems. 	<ul style="list-style-type: none"> • Re-evaluate sensor placement, ensuring it's not too close to the ground or metal parts. • Ensure control module and sensing wires are not stuck on metal parts or anti-collision pipes.
System not responding at all.	<ul style="list-style-type: none"> • Power connection issue. • Faulty component. 	<ul style="list-style-type: none"> • Check all wiring connections to ensure they are secure and correctly installed. • Contact customer support if all other troubleshooting steps fail.

8. SPECIFICATIONS

Feature	Specification
Model Number	ETO001
Operating Voltage	DC12V (Not compatible with DC24V)
Waterproof Rating	IP67 (Control Module)
Material	Metal
Specific Uses	Automobiles (Sedan, Compact, SUV, MPV)
Sensor Detection Range	Approx. 19.69 inches (50 cm)

How to install the detect sensor?



Sensor detecting range 19.69in/50cm

Please make sure your foot is in sensor detecting range when kick

IMPORTANT:



1. Lift foot, kick to the middle of the rear bumper, the foot should 8-15cm to the bumper.



2. Keep the sensor away from any metal part & anti-collision pipe as far as possible.

Figure 9: ETO001 compatibility with various vehicle types and IP67 waterproof feature.

9. WARRANTY AND SUPPORT

9.1 Warranty Information

The EASYGUARD ETO001 comes with a **1-year manufacturer's warranty** from the date of purchase. This warranty covers defects in materials and workmanship under normal use. It does not cover damage caused by improper installation, misuse, accidents, or unauthorized modifications.

9.2 Customer Support

For technical assistance, warranty claims, or any questions regarding the EASYGUARD ETO001, please

contact your retailer or the manufacturer directly. When contacting support, please have your product model number (ETO001) and proof of purchase readily available.

Manufacturer: ieasyguard.com