



Manuals.plus /

› Samsung /

› Samsung Galaxy A52s 5G User Manual

Samsung Galaxy A52s 5G

Samsung Galaxy A52s 5G User Manual

Model: Galaxy A52s 5G

INTRODUCTION

Welcome to the user manual for your new Samsung Galaxy A52s 5G smartphone. This manual provides essential information on setting up, operating, maintaining, and troubleshooting your device. The Samsung Galaxy A52s 5G is designed to offer a powerful and seamless mobile experience with its advanced camera system, vibrant display, and robust performance.



The Samsung Galaxy A52s 5G in black, showcasing its sleek design and camera module on the rear, and the Infinity-O display on the front.

WHAT'S IN THE BOX

Upon opening your Samsung Galaxy A52s 5G package, you should find the following items:

- Handset
- Ejection Pin
- Manual (this document)
- Data Cable
- Travel Adaptor

SETUP

1. Inserting the SIM Card

1. Locate the SIM card tray on the side of your device.
2. Insert the ejection pin into the small hole next to the tray to open it.
3. Place your Nano-SIM card(s) into the tray with the gold contacts facing down. Ensure proper orientation.
4. Gently push the tray back into the slot until it is flush with the device.

2. Initial Charging

Before first use, it is recommended to fully charge your device. Use the provided data cable and travel adaptor.

- Connect the data cable to the charging port on your phone.
- Connect the other end of the data cable to the travel adaptor.
- Plug the travel adaptor into a power outlet.
- The device supports 25W fast charging, though a 15W charger is included in the box.

3. Powering On and Initial Setup

1. Press and hold the Power key (located on the side of the device) until the Samsung logo appears.
2. Follow the on-screen prompts to complete the initial setup, including language selection, Wi-Fi connection, Google account setup, and security settings.

OPERATING YOUR DEVICE

Display Features

The Samsung Galaxy A52s 5G features a 6.5-inch FHD+ Super AMOLED Infinity-O display, offering vibrant colors and deep blacks. It boasts a 120Hz refresh rate for smooth scrolling and an Eye Comfort Shield to reduce blue light emission.

120Hz sAMOLED Display



The 120Hz sAMOLED display provides a smooth and comfortable viewing experience with high brightness.

Camera System

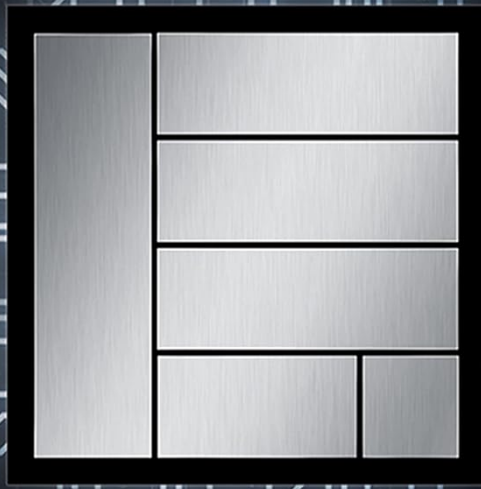
Capture stunning photos and videos with the versatile quad-camera setup on the rear and a high-resolution front camera.

- **Rear Camera:** 64MP (F2.2) OIS Auto Focus Main camera, 12MP (F2.2) Ultrawide Camera, 5MP (F2.4) Macro Camera, and 5MP (F2.4) Depth Camera. The Optical Image Stabilization (OIS) helps in reducing blur from camera shake.
- **Front Camera:** 32MP (F2.2) Selfie Camera for clear self-portraits and video calls.

Performance

Powered by an Octa-Core 2.4GHz + 1.8 GHz processor (Snapdragon 778G), the Galaxy A52s 5G delivers efficient and responsive performance for daily tasks, gaming, and multitasking.

Snapdragon 778G (6nm) Processor



The Snapdragon 778G (6nm) processor ensures smooth operation and efficient power usage.

Connectivity

The device supports 5G connectivity, offering faster download and upload speeds where 5G networks are available. It supports 12 5G bands for broad compatibility.

- **5G Bands Supported:** N1, N3, N5, N7, N8, N20, N28, N38, N40, N41, N66, N78.
- Also supports Wi-Fi, Bluetooth, and GLONASS GPS.

Awesome 5G, 12 Band Support



Bands supported:

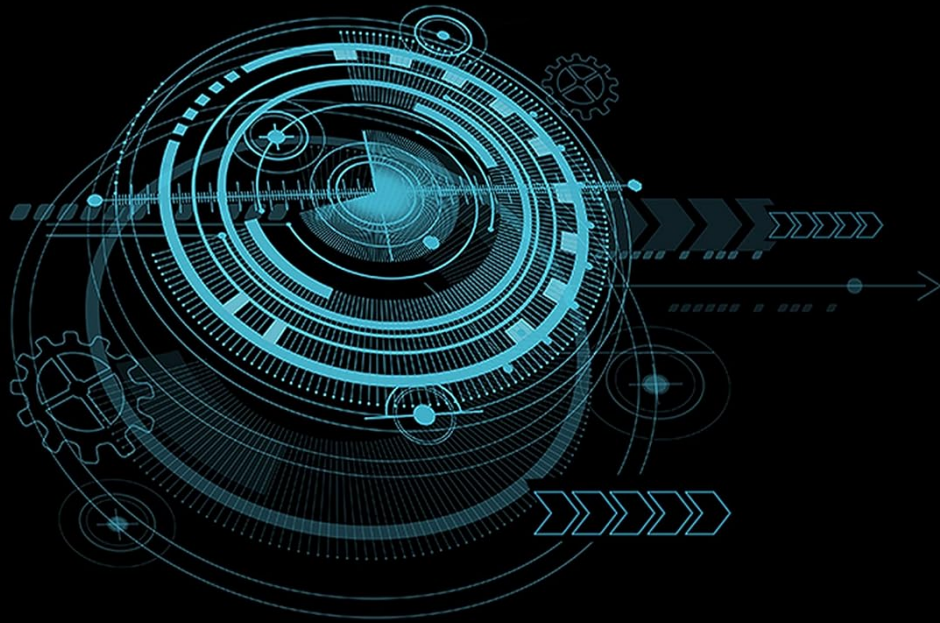
N1 | N3 | N5 | N7 | N8 | N20 | N28 | N38 | N40 | N41 | N66 | N78

Experience fast and reliable connectivity with 5G support across 12 bands.

Software and Updates

The Galaxy A52s 5G runs on Android 11 with Samsung's One UI Core 3.1, providing an intuitive and customizable user experience. Samsung commits to providing 3 years of OS upgrades for this model, ensuring your device stays up-to-date with the latest features and security enhancements.

Awesome Assurance



3
Years OS Upgrades

Benefit from Samsung's commitment to long-term software support with 3 years of OS upgrades.

MAINTENANCE

- **Cleaning:** Use a soft, lint-free cloth to clean the screen and body of the device. Avoid harsh chemicals or abrasive materials.
- **Software Updates:** Regularly check for and install software updates to ensure optimal performance, security, and access to new features. You can usually find this option in Settings > Software update.
- **Battery Care:** To prolong battery life, avoid exposing the device to extreme temperatures. It is recommended to keep the battery charge between 20% and 80% for long-term health.
- **Storage Management:** Periodically clear unnecessary files and apps to free up storage space and maintain device speed.

TROUBLESHOOTING

This section addresses common issues you might encounter with your Samsung Galaxy A52s 5G.

Problem	Possible Solution
Device not turning on	Ensure the battery is charged. Press and hold the Power key and Volume Down key simultaneously for more than 7 seconds to restart the device if it's frozen.
Battery drains quickly	Reduce screen brightness, disable unused features like Wi-Fi or Bluetooth, close background apps, and check for software updates.
Network connectivity issues	Check if Airplane mode is off. Restart the device. Verify SIM card is properly inserted. Contact your network provider if issues persist.
Apps crashing or freezing	Clear the app's cache and data (Settings > Apps > [App Name] > Storage). Update the app to its latest version. If the problem persists, uninstall and reinstall the app.
Fingerprint sensor not working	Ensure your finger and the sensor are clean and dry. Re-register your fingerprints in Settings > Biometrics and security > Fingerprints.

SPECIFICATIONS

Below are the key technical specifications for the Samsung Galaxy A52s 5G:

Feature	Detail
OS	Android 11.0
RAM	6 GB
Product Dimensions	0.8 x 7.5 x 16 cm; 189 g
Batteries	1 Lithium Ion batteries required. (included)
Item model number	Galaxy A52s 5G
Wireless communication technologies	Cellular
Connectivity technologies	Wi-Fi
GPS	GLONASS
Special features	Camera, Dual SIM, Fast Charging Support, OIS Camera

Feature	Detail
Display technology	FHD+
Colours displayed	407 PPI with 16M colours
Other display features	Wireless
Resolution	1080 x 2400
Other camera features	Quad Rear Camera (64MP+12MP+5MP+5MP) 32 MP
Audio Jack	No headphone jack
Form factor	Bar
Colour	Black
Battery Power Rating	4500 Milliampere Hour (mAh)
Item Weight	189 g
Date First Available	1 September 2021
Item Dimensions LxWxH	8 x 75 x 160 Millimeters
Net Quantity	1 Count
Generic Name	Smartphones
Brand	Samsung
Operating System	Android 11.0
RAM Memory Installed Size	6 GB
CPU Model	Snapdragon
CPU Speed	2.4 GHz

WARRANTY AND SUPPORT

Warranty Information

Your Samsung Galaxy A52s 5G comes with a **1 Year Warranty** from the date of purchase, covering manufacturing defects. Please retain your proof of purchase for warranty claims.

Customer Support

For technical assistance, service, or any inquiries regarding your device, please contact Samsung customer

support:

- **Email:** support.india@samsung.com
- **Toll-Free Number:** 1800 40 7267864
- **Manufacturer Address:** SAMSUNG ELECTRONICS CO., LTD 129, SAMSUNG-RO, YEONGTONG-GU SUWON 16677 GYEONGGI-DO SOUTH KOREA
- **Importer/Packer Address:** Samsung India Electronics Pvt Ltd, 6th Floor, DLF Centre, Sansad Marg, New Delhi - 110001