

## SUNCREAT 12 ft

# SUNCREAT 12 FT Heavy Duty Hammock Stand Instruction Manual

Model: 12 ft  
Brand: SUNCREAT

## INTRODUCTION

Thank you for choosing the SUNCREAT 12 FT Heavy Duty Hammock Stand. This portable and robust hammock stand is designed to provide a stable and comfortable lounging experience, supporting up to 475 lbs. Its universal design accommodates various hammock styles between 8.5 ft and 11 ft (ring to ring). This manual will guide you through the assembly, operation, maintenance, and troubleshooting of your new hammock stand, ensuring years of enjoyable use.

## SAFETY INFORMATION

- **Weight Capacity:** Do not exceed the maximum weight capacity of 475 lbs. Overloading can cause damage to the stand and lead to injury.
- **Proper Assembly:** Ensure all parts are correctly assembled and securely connected as per the instructions. Improper assembly can lead to instability.
- **Stable Surface:** Always set up the hammock stand on a flat, stable, and level surface to prevent tipping. Avoid uneven ground or slopes.
- **Regular Inspection:** Periodically inspect the stand for any signs of wear, damage, or loose connections. Tighten any loose bolts and replace damaged parts immediately.
- **Children and Pets:** Supervise children and pets around the hammock stand to prevent accidents.
- **Weather Conditions:** While weather-resistant, it is recommended to store the stand indoors during extreme weather conditions to prolong its lifespan.

## PARTS LIST

Please ensure all the following components are present before beginning assembly:

- Center Support Bar (1)
- Foot Stands (2)
- Arms with Hanging Hooks (2)
- Steel Hooks (2, pre-attached to arms)
- Plastic Protectors (4, pre-attached to foot stands)

# Heavy Duty 12ft Steel Stand

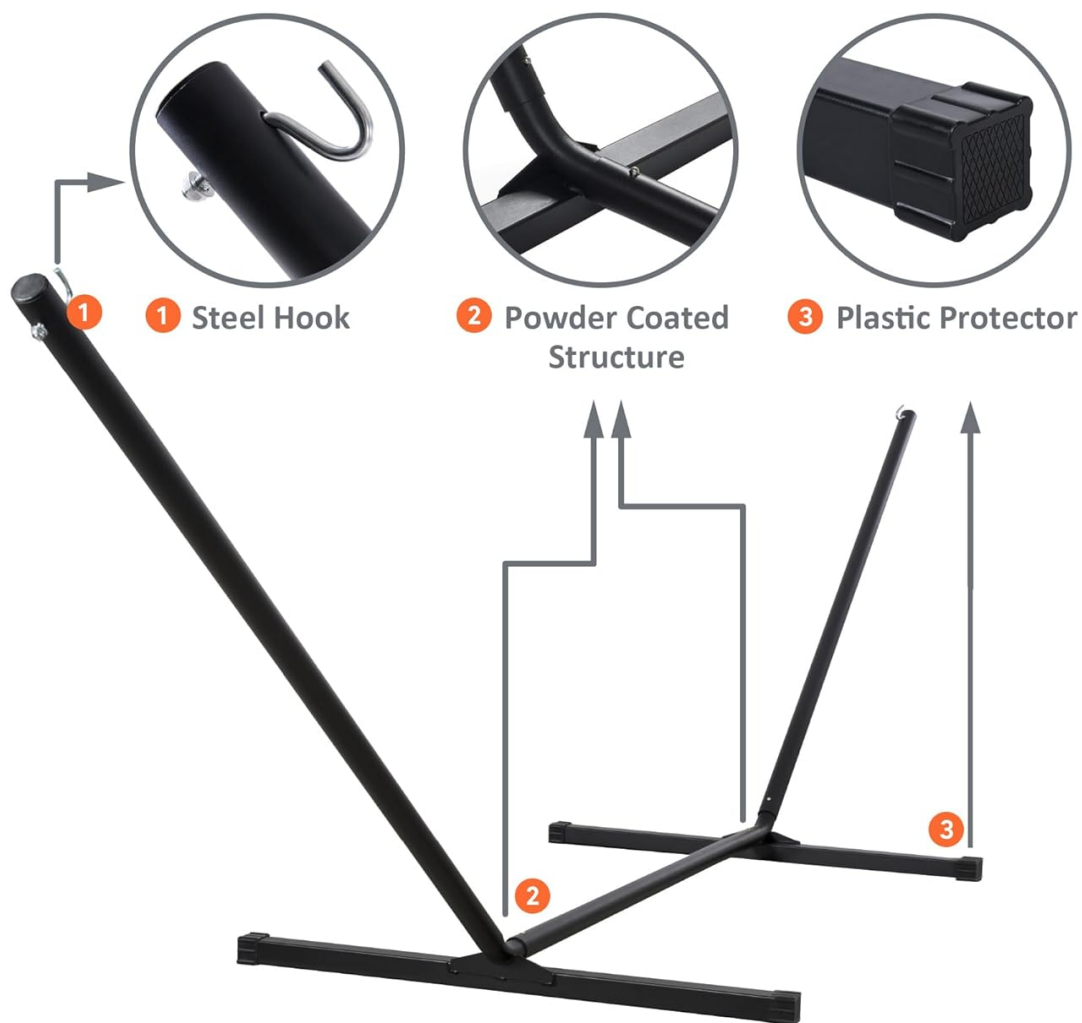


Figure 1: Components of the SUNCREAT Hammock Stand.

## SETUP AND ASSEMBLY

The SUNCREAT Hammock Stand is designed for tool-free assembly, allowing for quick setup and breakdown. Follow these steps:

1. **Connect Center Support Bar to Foot Stands:** Lay the Center Support Bar on a flat surface. Insert one

end of the Center Support Bar into a Foot Stand. Ensure the spring-pin connector snaps into place, securing the connection. Repeat for the second Foot Stand on the other end of the Center Support Bar.

2. **Attach Arms to Foot Stands:** Take one of the Arms with Hanging Hooks. Insert the bottom end of the arm into the designated opening on one of the Foot Stands. Ensure the spring-pin connector snaps into place. Repeat for the second arm on the other side.
3. **Verify Connections:** Gently lift and shake the assembled stand to ensure all connections are secure and stable. The stand should form a sturdy, inverted 'V' shape on each end.
4. **Hang Your Hammock:** Once the stand is fully assembled and stable, hang your hammock onto the steel hooks located at the top of each arm. Ensure the hammock is securely attached and evenly distributed.

## Easy Assembly

### STEP1

Attach the frame bars to the feet and connect with the central pole

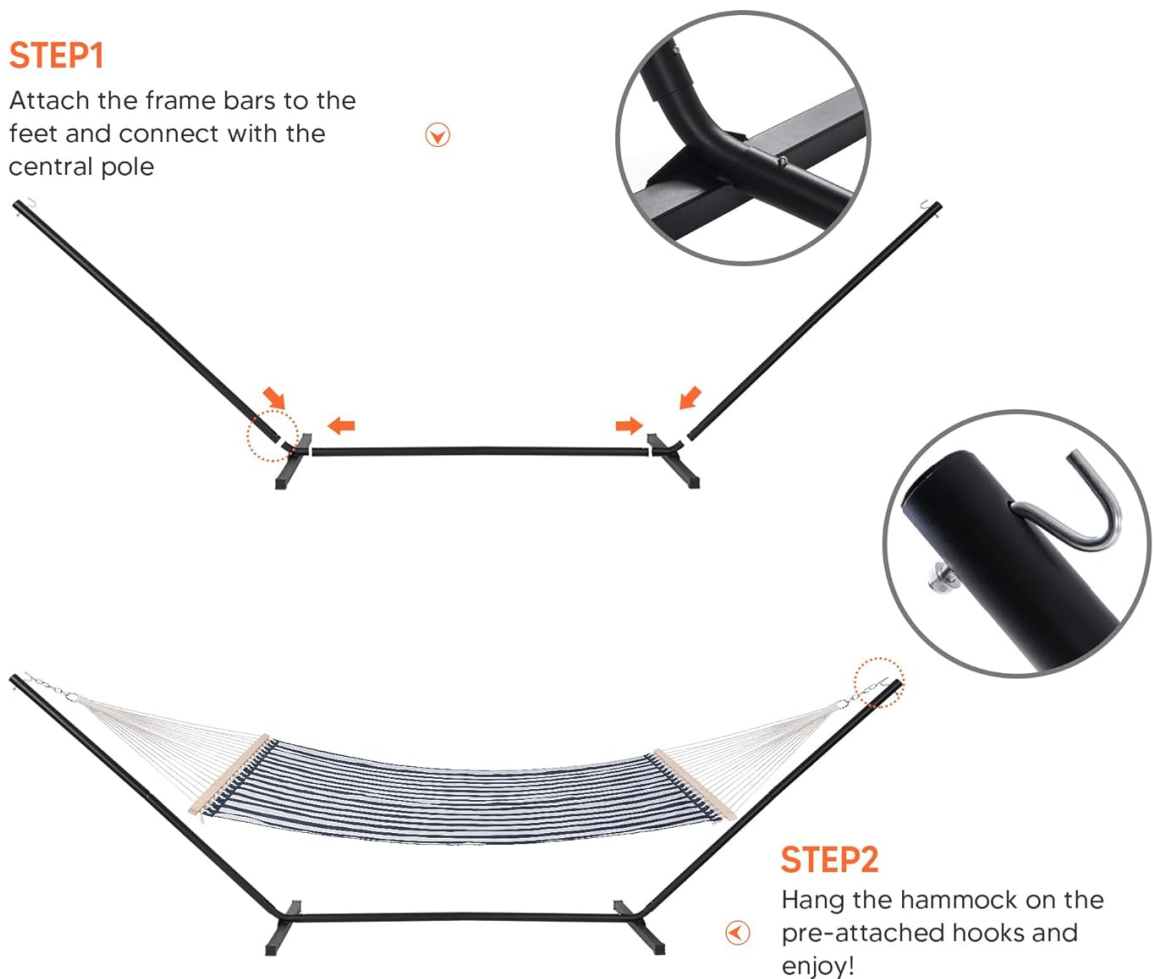


Figure 2: Easy Assembly Steps.



Figure 3: Detail of the spring-pin connection.

Video 1: How to Assemble SUNCREAT 12 ft Steel Stand. This video demonstrates the quick and easy assembly process of the hammock stand, highlighting the snap-button connections.

Video 2: SUNCREAT 12 ft Hammock Stand Overview. This video provides a general overview of the hammock stand, including a brief demonstration of its assembly and portability.

## OPERATING INSTRUCTIONS

Your SUNCREAT Hammock Stand is designed for versatile use. Here are some guidelines for optimal operation:

- **Hammock Compatibility:** This stand is universal and supports hammocks ranging from 8.5 ft to 11 ft (from ring to ring). Ensure your hammock falls within this range for proper fit and tension. Hammocks shorter than 8.5ft may require additional metal rings or links (not included) for proper attachment.
- **Placement:** The portable design allows you to set up your hammock stand almost anywhere – in your backyard, by the pool, or even for camping. Choose a flat, stable surface for maximum safety and comfort.

- **Usage:** Gently enter and exit the hammock. Avoid sudden movements or excessive swinging that could destabilize the stand.



### Thickened Steel Pole

SUNCREAT heavy duty hammock stand is made of powder coated steel cube frame, features safe, stable, weather resistant and rust resistant.



Figure 4: Hammock Size Compatibility Guide.

## MAINTENANCE

To ensure the longevity and optimal performance of your SUNCREAT Hammock Stand, follow these maintenance tips:

- **Cleaning:** Wipe down the steel frame with a damp cloth and mild soap as needed. Avoid harsh chemicals or abrasive cleaners that could damage the powder-coated finish.
- **Rust Prevention:** The stand features a powder-coated steel frame for rust resistance. However, to prevent rust, especially in humid environments, ensure the stand is dry before storage. If scratches occur, touch up with rust-inhibiting paint.
- **Storage:** When not in use for extended periods or during inclement weather, disassemble the stand and store it in a dry, protected area. Its easy breakdown makes storage convenient.
- **Check Connections:** Periodically check all spring-pin connections to ensure they remain secure.

## TROUBLESHOOTING

Here are some common issues and their solutions:

Problem	Possible Cause	Solution
Hammock sags too low or touches the ground.	Hammock is too long for the stand; improper hanging.	Ensure your hammock length (ring to ring) is between 8.5 ft and 11 ft. If shorter, use additional chains or links to adjust the height. Re-hang the hammock to ensure even tension.

Problem	Possible Cause	Solution
Stand feels unstable or wobbly.	Not all connections are fully engaged; uneven ground.	Check all spring-pin connections to ensure they are securely snapped into place. Move the stand to a flat, level surface.
Stand blows over in windy conditions.	Lightweight design for portability; not anchored.	While portable, in very windy conditions, consider temporarily disassembling or anchoring the stand with sandbags or stakes (not included) if left unattended.
Rust spots appearing on the frame.	Exposure to moisture; scratches in powder coating.	Wipe down the stand after rain or heavy dew. If scratches are present, clean the area and apply rust-inhibiting paint to prevent further corrosion. Store indoors when not in use.

## SPECIFICATIONS

Feature	Detail
Product Dimensions (L x W x H)	147.6 x 35.4 x 47.6 inches
Item Weight	28.5 pounds
Material	Powder Coated Steel
Weight Capacity	Up to 475 lbs
Compatible Hammock Length	8.5 ft to 11 ft (ring to ring)
Assembly Required	Yes, tool-free assembly
Country of Origin	China

# Dimensions

Please confirm the length from ring to ring of your hammock is under **11ft** before purchase.

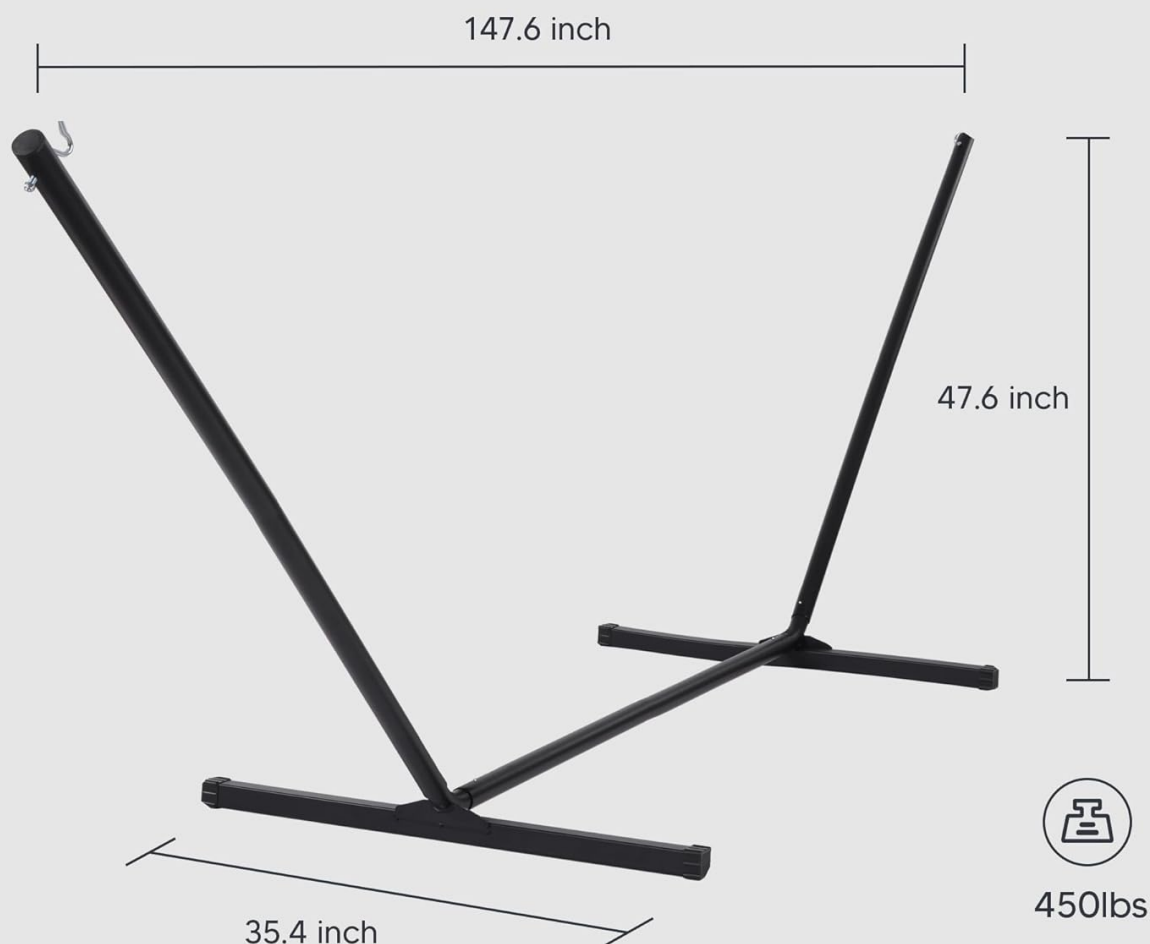


Figure 5: Hammock Stand Dimensions.

## WARRANTY AND SUPPORT

SUNCREAT stands behind the quality of its products. If you have any questions or concerns regarding your 12 FT Heavy Duty Hammock Stand during use within one year of purchase, please do not hesitate to contact us. Our customer support team is always here to help you with any inquiries or issues you may encounter. For support, please refer to the contact information provided with your purchase or visit the official SUNCREAT website.