

[Manuals.plus](#) /

> [iMaihom](#) /

> iMaihom 130W LED Flood Light (Model BDD130D-3) Instruction Manual

iMaihom BDD130D-3

iMaihom 130W LED Flood Light (Model BDD130D-3) Instruction Manual

Dusk-to-Dawn Outdoor Lighting with 3 Adjustable Heads

PRODUCT OVERVIEW

The iMaihom 130W LED Flood Light (Model BDD130D-3) is designed for outdoor illumination, featuring a dusk-to-dawn photocell sensor and three adjustable light heads. This unit provides high brightness and is built for durability in various weather conditions.

- **High Brightness:** Equipped with 154 high-quality LED chips, producing up to 13000 lumens.
- **Dusk-to-Dawn Functionality:** Built-in sensitive photocell sensor automatically turns the light on at nightfall and off at daybreak.
- **Adjustable Heads:** Three light heads can be rotated to different angles, covering a wide lighting area up to 1850 sq. ft.
- **Durable Construction:** IP65 waterproof rating and full aluminum body ensure resistance to rain, sleet, snow, and efficient heat dissipation.

WHAT'S IN THE BOX

Verify that all components are present before beginning installation.

- iMaihom 130W LED Flood Light Unit
- Black Silicone Cap (for switch-controlled mode)
- Mounting Hardware (screws, anchors, wire nuts)

SETUP AND INSTALLATION

This flood light is designed for hardwired installation to a junction box. Ensure power is turned off at the circuit breaker before beginning installation.

Installation Steps:

1. **Prepare the Mounting Surface:** Identify a suitable junction box location on a wall or under eaves/soffits. Ensure the junction box is waterproof for outdoor use.
2. **Attach Mounting Plate:** Secure the mounting plate to the junction box using the provided screws.
3. **Wire Connections:** Connect the flood light's wires to your household wiring:
 - Black wire (Live) to Black wire
 - White wire (Neutral) to White wire
 - Green/Yellow wire (Ground) to Green/Ground wire

Use the provided wire nuts to secure connections.

4. **Mount the Light Fixture:** Align the flood light fixture with the mounting plate and secure it with the central screw.
5. **Seal the Fixture:** Ensure the gasket is properly seated to maintain the IP65 waterproof rating.
6. **Adjust Light Heads:** Loosen the screws on the side of each light head to adjust their angle as needed. Tighten screws to secure the position.
7. **Restore Power:** Turn on the power at the circuit breaker.



Figure 1: Hardwired Installation Steps. Shows the three steps for connecting the light to a junction box.



Figure 2: Eave and Wall Installation Examples. Demonstrates the versatility of mounting options.



Figure 3: Adjustable Heads and Photocell. Illustrates the rotational capability of the light heads and the location of the photocell.

OPERATING MODES

The iMaihom 130W LED Flood Light offers two operating modes:

1. Dusk-to-Dawn Mode (Default)

In this mode, the built-in photocell sensor automatically detects ambient light levels. The light will turn on when it gets dark (nightfall) and turn off when it gets bright (daybreak).

- No manual intervention required.
- Energy efficient operation.

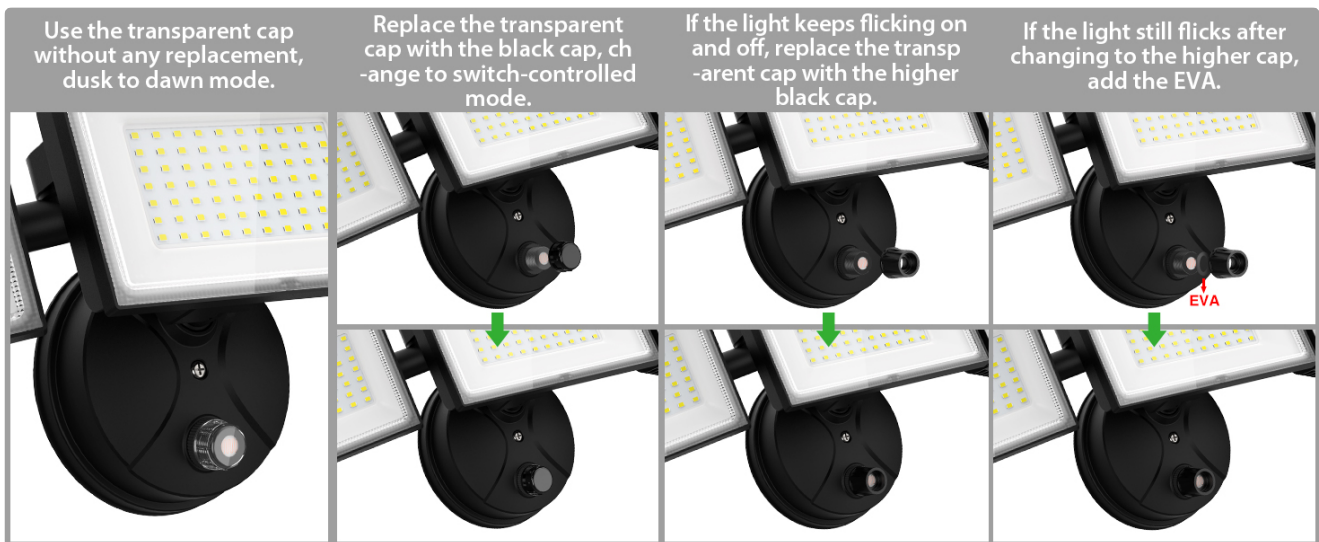


Figure 4: Dusk-to-Dawn Operation. The light automatically activates at dusk and deactivates at dawn.

2. Switch-Controlled Mode

To operate the light manually via a wall switch, cover the photocell sensor with the provided black silicone cap. This disables the automatic dusk-to-dawn function, allowing you to control the light with your existing wall switch.

- Allows manual ON/OFF control.
- Ideal for situations where continuous lighting is not desired or specific timing is needed.



Figure 5: Switching to Manual Control. Instructions for using the black silicone cap to enable switch-controlled operation.

MAINTENANCE

The iMaihom 130W LED Flood Light requires minimal maintenance. Follow these guidelines to ensure optimal performance and longevity:

- **Cleaning:** Periodically clean the light heads and photocell sensor with a soft, damp cloth to remove dirt, dust, or debris. Do not use abrasive cleaners or solvents.
- **Inspection:** Regularly inspect the wiring and mounting for any signs of wear, damage, or loose connections. Address any issues promptly.

- **Photocell Obstruction:** Ensure the photocell sensor is not obstructed by leaves, dirt, or other objects, as this can interfere with its automatic operation.

TROUBLESHOOTING

Problem	Possible Cause	Solution
Light does not turn on at night.	<ul style="list-style-type: none"> ◦ Power is off. ◦ Photocell sensor is obstructed or faulty. ◦ Wiring issue. 	<ul style="list-style-type: none"> ◦ Check circuit breaker and wall switch. ◦ Clean the photocell sensor. Ensure no objects are blocking it. ◦ Verify wiring connections are secure. Consult a qualified electrician if unsure.
Light stays on during the day.	<ul style="list-style-type: none"> ◦ Photocell sensor is obstructed or faulty. ◦ Ambient light is insufficient. 	<ul style="list-style-type: none"> ◦ Clean the photocell sensor. Ensure no objects are blocking it. ◦ If using switch-controlled mode, ensure the black cap is properly installed.
Light flickers.	<ul style="list-style-type: none"> ◦ Loose wiring connection. ◦ Photocell sensor interference. 	<ul style="list-style-type: none"> ◦ Check and tighten all wiring connections. ◦ Ensure the photocell sensor is not receiving intermittent light (e.g., from another light source or reflective surface). If flickering persists in switch-controlled mode, ensure the black cap is fully covering the sensor.

SPECIFICATIONS

Feature	Detail
Brand	iMaihom
Model Number	BDD130D-3
Wattage	130 Watts

Feature	Detail
Brightness	13000 Lumens
Light Color	Daylight White (6500K)
Voltage	120 Volts (AC)
Material	Aluminum
Water Resistance Level	IP65 Waterproof
Control Method	Photocell (Dusk-to-Dawn) / Switch
Mounting Type	Wall Mount, Eave Mount, Soffit Mount, Pole Mount
Item Dimensions (L x W x H)	15.78"L x 6.18"W x 4.64"H
Item Weight	2.4 Pounds

WARRANTY AND SUPPORT

The iMaihom 130W LED Flood Light (Model BDD130D-3) comes with a **2-year warranty** from the manufacturer. For technical support, warranty claims, or further assistance, please contact iMaihom customer service through their official website or the retailer where the product was purchased.

For more information about iMaihom products, visit the [iMaihom Store on Amazon](#).

PRODUCT VIDEOS

iMaihom 100W LED Dusk to Dawn Security Light - Overview

Your browser does not support the video tag.

This video provides an overview of the iMaihom 100W LED Dusk to Dawn Security Light, highlighting its features and benefits. Note: This video refers to a 100W model, but the features are generally applicable to the 130W model.