

JVC HA-A5T

JVC HA-A5T Gumy Mini True Wireless Earbuds User Manual

INTRODUCTION

This manual provides detailed instructions for the JVC HA-A5T Gumy Mini True Wireless Earbuds. Please read this manual thoroughly before using your earbuds to ensure proper operation and to maximize their lifespan. Keep this manual for future reference.

PACKAGE CONTENTS

Verify that all items are present in the package:

- JVC HA-A5T Gumy Mini True Wireless Earbuds (Left and Right)
- Charging Case
- USB Charging Cable
- Standard Silicone Eartips (Sizes S, M, L)



Image: JVC HA-A5T Gumy Mini True Wireless Earbuds. This image displays the two white earbuds, highlighting their compact design.

PRODUCT OVERVIEW

The JVC HA-A5T Gumy Mini earbuds are designed for daily use, offering a lightweight and comfortable fit. They feature Bluetooth 5.1 connectivity, a built-in microphone for hands-free calls, and are rated IPX4 for water resistance.



Image: JVC HA-A5T Gummy Mini Earbuds in Charging Case. The image shows both earbuds securely placed within their compact white charging case.



GUMMY mini DESIGN

JVC

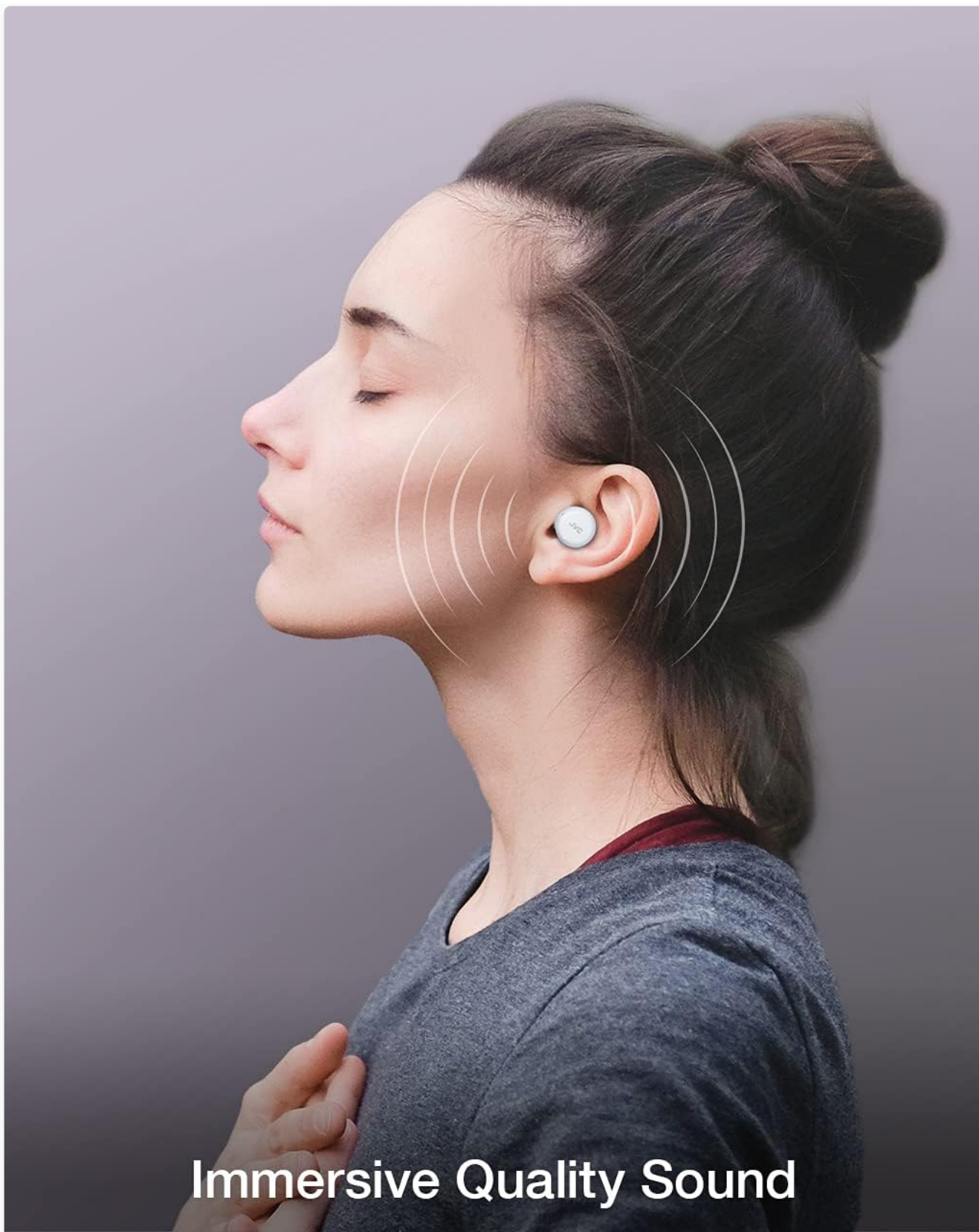
Image: JVC HA-A5T Gummy Mini Earbuds and Case in Hand. This image illustrates the small and portable size of both the earbuds and their charging case when held in a hand.

1. Charging the Earbuds and Case

1. Place the earbuds into the charging case. Ensure they are correctly seated in their respective slots (L for left, R for right).
2. Connect the supplied USB charging cable to the charging case's port and the other end to a USB power source (e.g., computer, USB wall adapter).
3. The indicator light on the charging case will show the charging status. Refer to the product's quick start guide for specific light patterns.
4. A full charge provides up to 15 hours of total playback time, including charges from the case.

2. Bluetooth Pairing

1. Ensure the earbuds are charged.
2. Open the charging case. The earbuds will automatically enter pairing mode.
3. On your device (smartphone, tablet, computer), enable Bluetooth.
4. Search for available Bluetooth devices and select "JVC HA-A5T" from the list.
5. Once connected, a confirmation sound or indicator light will confirm successful pairing.
6. The earbuds support Bluetooth 5.1 for stable and efficient connection.



Immersive Quality Sound

JVC

Image: JVC HA-A5T Gumy Mini Auto Connect Feature. This graphic illustrates the automatic connection process of the earbuds when removed from their charging case.

OPERATING INSTRUCTIONS

Earbud Controls

The HA-A5T earbuds feature a single button control for various functions. Specific actions may vary slightly depending on your connected device.

- **Play/Pause:** Press the button once.
- **Next Track:** Press the button twice.
- **Previous Track:** Press the button three times.
- **Answer/End Call:** Press the button once during an incoming call or during a call.
- **Reject Call:** Press and hold the button during an incoming call.
- **Activate Voice Assistant:** Press and hold the button for a few seconds.

Making and Receiving Calls

The built-in microphone allows for hands-free calling. Ensure your earbuds are connected to your phone via Bluetooth.

- When a call comes in, you will hear a ringtone through the earbuds.
- Press the earbud button once to answer the call.
- Press the earbud button once again to end the call.

Voice Assistant

The earbuds are compatible with voice assistants on your connected device (e.g., Siri, Google Assistant). Press and hold the earbud button to activate your device's voice assistant.



JVC Gummy Mini True Wireless Earbuds

JVC

Image: Person wearing JVC HA-A5T Gummy Mini Earbuds. This image shows an individual wearing the earbuds, demonstrating their discreet and comfortable fit in the ear.

Cleaning

To maintain optimal sound quality and hygiene:

- Gently wipe the earbuds and charging case with a soft, dry, lint-free cloth.
- Remove the silicone eartips and clean them with mild soap and water, then dry thoroughly before reattaching.
- Do not use abrasive cleaners, alcohol, or chemical solvents.

Storage

When not in use, store the earbuds in their charging case to protect them from dust and damage.

Water Resistance (IPX4)

The JVC HA-A5T earbuds are rated IPX4, meaning they are resistant to splashing water from any direction. This makes them suitable for light rain or sweating during workouts. However, they are not designed for submersion in water or exposure to strong jets of water.

TROUBLESHOOTING

If you encounter issues with your earbuds, refer to the following common solutions:

- **No Sound:** Ensure earbuds are charged, properly paired, and volume is turned up on both the earbuds and your connected device.
- **Pairing Issues:** Turn off Bluetooth on your device, then turn it back on. Forget the device from your Bluetooth list and attempt to pair again. Ensure earbuds are in pairing mode.
- **Charging Issues:** Check that the charging cable is securely connected to both the case and the power source. Ensure the charging contacts on the earbuds and inside the case are clean and free of debris.
- **Earbuds Not Turning On:** Place the earbuds back into the charging case, close the lid, and then open it again. Ensure they are charged.

If problems persist, consult the JVC support website or contact customer service.

SPECIFICATIONS

Feature	Detail
Model Number	HA-A5T
Connectivity Technology	Bluetooth 5.1
Ear Placement	In-Ear
Water Resistance Level	IPX4 (Splash-proof)
Total Playback Time	Up to 15 hours (with charging case)
Microphone	Yes (Hands-free)
Voice Control	Yes (Voice Assistant Compatible)
Control Method	Tactile (One-button)
Compatible Devices	Mobile phones, tablets, computers (iOS/Android/Windows)
Material	Plastic

Weight (per earbud)	Approximately 4 Grams
Battery Composition	Lithium-polymer
Impedance	16 Ohms

WARRANTY AND SUPPORT



For warranty information, please refer to the documentation provided with your purchase or visit the official JVC website. Support resources, including FAQs and contact information, can typically be found on the manufacturer's product support pages.



© 2024 JVC. All rights reserved.

Related Documents - HA-A5T

	<p>JVC HA-A5T / HA-Z55T True Wireless Stereo Earbuds User Guide</p> <p>Comprehensive guide for JVC HA-A5T and HA-Z55T true wireless stereo earbuds, covering setup, usage, safety warnings, and compliance information.</p>
	<p>JVC HA-FR9UC Wired Earbuds with USB-C: User Guide and Safety Information</p> <p>Comprehensive guide to JVC HA-FR9UC wired USB-C earbuds, covering usage, safety warnings, and compliance for various regions. Learn how to use the remote control and important safety precautions.</p>
	<p>JVC HA-EC25T True Wireless Earbuds Bluetooth 5.0 Product Overview</p> <p>Discover the JVC HA-EC25T true wireless earbuds. Featuring Bluetooth 5.0, IPX4 water resistance, and up to 28 hours of playback with the charging case. Get detailed specifications and safety information.</p>
	<p>JVC HA-A7T True Wireless Headphones User Manual</p> <p>Official user manual for the JVC HA-A7T true wireless headphones, covering setup, Bluetooth pairing, safety precautions, technical specifications, and compliance information.</p>

	<p>JVC HA-A6T/HA-Z66T True Wireless Earbuds User Manual</p> <p>This document provides instructions and safety information for the JVC HA-A6T and HA-Z66T True Wireless Earbuds. It covers setup, operation, Bluetooth specifications, and compliance information.</p>
	<p>JVC HA-A6T/HA-Z66T True Wireless Stereo Earbuds User Manual</p> <p>This document provides instructions and safety information for the JVC HA-A6T and HA-Z66T true wireless stereo earbuds. It covers setup, operation, Bluetooth specifications, and disposal guidelines.</p>