

Manuals+

[Q & A](#) | [Deep Search](#) | [Upload](#)

manuals.plus /

- › [AIRTOK](#) /
- › [AIRTOK AP1001 HEPA Air Purifier Instruction Manual](#)

AIRTOK AP1001

AIRTOK AP1001 HEPA Air Purifier Instruction Manual

Model: AP1001 | Brand: AIRTOK

PRODUCT OVERVIEW

The AIRTOK AP1001 HEPA Air Purifier is designed to improve indoor air quality by effectively filtering airborne particles and odors. Its compact design makes it suitable for various room sizes while offering powerful purification capabilities.



Image: The AIRTOK AP1001 HEPA Air Purifier, a compact white unit with a perforated lower section for air intake.

Key Features:

- **Space-Saving Design:** Compact dimensions (7.9"D x 12.6"W x 7.9"H) suitable for rooms up to 793 sq ft, refreshing air 5 times per hour in 238 sq ft rooms.
- **Efficient H13 True HEPA Filtration:** Utilizes a 5-stage filtration system with H13 True HEPA filter and activated carbon to capture 99.95% of particles as small as 0.1 micrometers, including dust, pollen, pet dander, smoke, and odors.
- **Customizable Fan Speeds:** Features a DC brushless motor with three fan speeds (low, medium, high) for adjustable purification intensity.
- **Timer Function:** Set the device to operate for 2, 4, or 8 hours before automatic shutdown.
- **Child Lock:** Prevents unintended operation by children or pets by locking the control panel.
- **Optional Night Light:** Integrated night light function can be turned on or off for undisturbed sleep.
- **Filter Replacement Reminder:** An indicator light illuminates after approximately 1350 hours of cumulative operation to signal filter replacement.

SETUP AND FILTER INSTALLATION

Before first use, ensure all packaging materials are removed from the filter and the unit. The power adapter is located inside the machine.

Steps for Filter Installation:

1. **Unpack the Unit:** Carefully remove the air purifier from its packaging.
2. **Access the Filter Compartment:** Place the machine bottom-up. Rotate the bottom cover counter-clockwise to unlock it.
3. **Remove Packaging:** Take out the original filter and remove its plastic packaging. Retrieve the power adapter from inside the filter compartment.
4. **Insert Filter:** Place the filter back into the machine, ensuring it is correctly oriented.
5. **Secure Cover:** Rotate the base cover clockwise to lock it.
6. **Connect Power:** Plug the power adapter into the unit and then into a wall outlet.



Image: Visual guide demonstrating the 5-step process for filter installation and power adapter retrieval.

Visual Guide: Unboxing and Setup

Your browser does not support the video tag.

Video: Official AIRTOK video demonstrating the unboxing and initial setup of the air purifier, including filter preparation.

OPERATING INSTRUCTIONS

The control panel is located on the top of the unit, featuring touch-sensitive buttons for various functions.



Image: The AIRTOK AP1001 Air Purifier highlighting its control panel and key features like 3 fan speeds, timer, child lock, and night light.

Power On/Off:

Press the power button () to turn the unit on or off.

Adjusting Fan Speed:

The unit features three fan speeds: Low, Medium, and High. Press the fan speed button () to cycle through the available speeds. The current speed is indicated by the number of illuminated lights.

Timer Settings:

Press the timer button () to set the operating time to 2, 4, or 8 hours. The unit will automatically shut off once the set time has elapsed.

Child Lock Function:

To activate or deactivate the child lock, press and hold the lock button () for 3 seconds. This prevents accidental changes to settings.

Night Light:

The air purifier includes an optional night light. Press the light button () to turn the night light on or off as desired.



Image: The AIRTOK AP1001 Air Purifier on a bedside table, illustrating its quiet operation and night light feature for minimal disturbance.

Aromatherapy Feature:

The air purifier is equipped with an essential oil holder. Add a few drops of your preferred essential oil to the pad in the holder to diffuse a pleasant aroma throughout the room. Ensure to only add essential oils to the designated pad and not directly into the unit.

Rapidly Absorb Odor

Pet odors and cooking odors, etc. A large amount of high-quality activated carbon can further improve the air quality

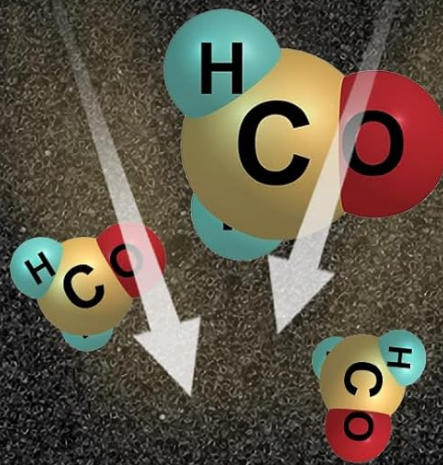


Image: Graphic illustrating the air purifier's ability to rapidly absorb pet odors and cooking odors using activated carbon filtration.

MAINTENANCE

Filter Replacement:

The filter replacement indicator light will illuminate after approximately 1350 hours of cumulative operation, signaling that the filter needs to be replaced to maintain optimal air purification performance. To reset the indicator after replacing the filter, press and hold the filter reset button for 3 seconds.

To ensure the health and safety of you and your family, it is recommended to replace the filter element when the indicator light illuminates.

Cleaning the Air Purifier:

- Always unplug the unit before cleaning.
- Wipe the exterior of the air purifier with a soft, dry cloth. If necessary, use a damp cloth and then dry immediately.
- Do not use abrasive chemicals or flammable cleaning agents.

- The pre-filter can be cleaned every 2-4 weeks to extend the life of the filter. Use a soft brush or vacuum hose to remove hair, dust, and large particles.
- Do not clean the True HEPA and Activated Carbon filters with water or other liquids.

FILTRATION SYSTEM

The AIRTOK AP1001 utilizes a comprehensive 5-stage filtration system to purify the air:

1. **Fine Pre-filter:** Captures large particles like hair, pet hair, and large dust.
2. **Blue Nano Nylon Fabric:** Filters wildfire smoke, soot from automobiles, and other suspended small particles.
3. **H13 True HEPA Filter:** Traps 99.95% of fine dust, pollen, pet dander, and smoke particles down to 0.1 micrometers.
4. **Activated Carbon Filter:** Absorbs food smells, cigarette fumes, pet odors, and volatile organic compounds (VOCs).
5. **Sturdy Steel Mesh Layer:** Provides structural integrity and protects the filters from crushing.

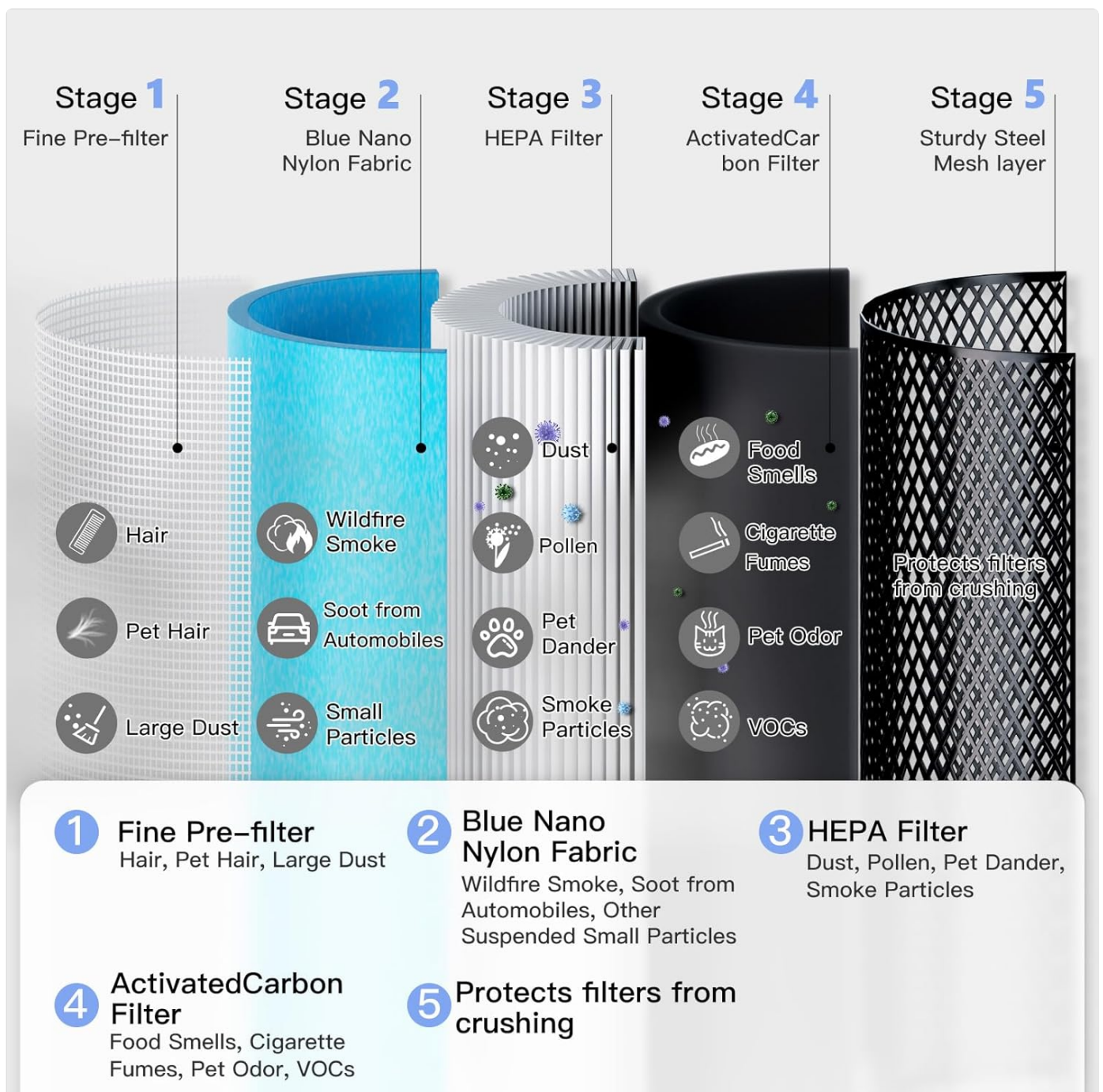


Image: Detailed diagram illustrating the five layers of the H13 True HEPA filtration system and what each layer targets.

Airtok

HEPA H13 Air Purifier



Image: Cross-section view of the air purifier's 5-stage filtration system, showing the individual layers and their functions.

TROUBLESHOOTING

Problem	Possible Solution
No electricity / Unit not turning on	Check if the unit is properly plugged into a working electrical outlet.
Air purifier is malfunctioning	Contact customer support.
Power cord is damaged	Contact customer support.
The outlet is damaged	Try a different outlet.
Airflow is blocked by plastic wrap on filter	The plastic wrap of the filter must be removed before first use.
Airflow is significantly reduced	Clean the pre-filter or replace the filter. Refer to the Maintenance section.
Air purifier makes an unusual noise	Ensure the appliance is on an even, stable surface.
Appliance is damaged / Foreign objects inside	Contact customer support.
Strong smell comes from the filter	Replace the filter.

SPECIFICATIONS

- **Model Number:** AP1001
- **Brand:** AIRTOK
- **Product Dimensions:** 7.9"D x 12.6"W x 7.9"H
- **Item Weight:** 2.66 Kilograms
- **Power Source:** AC 100-240V
- **CADR:** 110 CFM / 190 m³/h
- **Coverage Area:** Up to 793 sq ft (refreshes air 5 times per hour in 238 sq ft)
- **Filter Type:** H13 True HEPA with Activated Carbon
- **Rated Power:** 24W

WARRANTY AND SUPPORT

For warranty information, technical support, or any inquiries regarding your AIRTOK AP1001 HEPA Air Purifier, please refer to the contact details provided in your product packaging or visit the official AIRTOK website. Always ensure to use genuine AIRTOK replacement filters to maintain optimal performance and warranty validity.