

MAXXMEE MAXXMEE Cordless Cyclone Vacuum Cleaner Plus Battery

MAXXMEE Replacement Battery for Cordless Cyclone Vacuum Cleaner Plus (22.2V, 2000mAh)

Instruction Manual

INTRODUCTION

Thank you for choosing the MAXXMEE Replacement Battery for your Cordless Cyclone Vacuum Cleaner Plus. This manual provides important instructions for the safe and efficient use of your new battery. Please read this manual thoroughly before installation and operation, and keep it for future reference.

SAFETY INSTRUCTIONS

Always observe the following safety precautions to prevent injury or damage to the battery and vacuum cleaner:

- Use only the original charger supplied with your MAXXMEE Cordless Cyclone Vacuum Cleaner Plus to charge this battery.
- Do not expose the battery to extreme temperatures (above 45°C or below 0°C) or direct sunlight.
- Do not disassemble, puncture, or modify the battery.
- Keep the battery away from water, moisture, and flammable materials.
- If the battery shows signs of damage, leakage, or overheating, discontinue use immediately and dispose of it properly.
- Keep out of reach of children.
- Dispose of used batteries according to local regulations.

PRODUCT OVERVIEW

The MAXXMEE Replacement Battery is designed to provide reliable power for your Cordless Cyclone Vacuum Cleaner Plus. It features a 22.2V voltage and 2000mAh capacity, offering up to 60 minutes of

runtime.



Image 1: Top view of the MAXXMEE replacement battery. This image highlights the battery's overall shape and the red release mechanism.

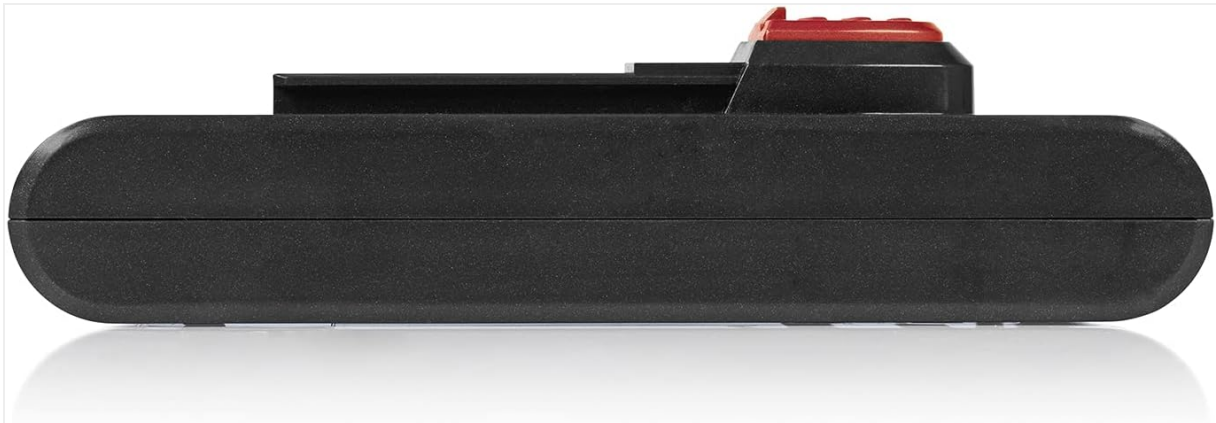


Image 2: Side view of the MAXXMEE replacement battery. This view illustrates the battery's compact design.

INSTALLATION

Follow these steps to safely install or replace the battery in your MAXXMEE Cordless Cyclone Vacuum Cleaner Plus:

1. Ensure the vacuum cleaner is turned off and disconnected from any power source.
2. Locate the battery compartment on your vacuum cleaner. Typically, the battery is located near the handle or main motor unit.
3. If replacing an old battery, press the release button or latch to remove the existing battery.
4. Align the new MAXXMEE replacement battery with the battery slot.
5. Slide the battery firmly into the compartment until it clicks securely into place. Ensure it is fully seated to establish proper electrical contact.



Image 3: Battery installation diagram. This image illustrates the connection point for the battery on the vacuum cleaner.

OPERATING INSTRUCTIONS

Charging the Battery

Before first use, fully charge the battery. Connect the vacuum cleaner (with the battery installed) to its original charger and plug it into a power outlet. The charging indicator on your vacuum cleaner will show the charging status. A full charge typically takes several hours.

Battery Runtime

The MAXXMEE Replacement Battery provides up to 60 minutes of continuous operation, depending on the power mode selected and the type of surface being cleaned. Actual runtime may vary.

MAINTENANCE

- **Regular Charging:** To prolong battery life, avoid completely draining the battery before recharging. Charge it regularly, even if not used frequently.
- **Storage:** If storing the battery for an extended period, charge it to approximately 50-60% and store it in a cool, dry place. Avoid storing it fully charged or completely discharged.
- **Cleaning:** Keep the battery contacts clean and free from dust or debris. Use a dry cloth to wipe them if necessary.

TROUBLESHOOTING

Problem	Possible Cause	Solution
Battery not charging	Charger not connected properly; faulty charger; battery not seated correctly.	Ensure charger is securely plugged in. Check charger for damage. Re-install battery firmly.
Short runtime	Battery not fully charged; battery degradation; high power mode usage.	Ensure battery is fully charged. Consider if battery has reached end of life. Use lower power modes for longer runtime.
Battery overheating	Overuse; faulty battery.	Allow battery to cool down. Discontinue use if overheating persists and contact support.

SPECIFICATIONS

Brand: MAXXMEE

Product Type: Replacement Battery

Compatible with: MAXXMEE Cordless Cyclone Vacuum Cleaner Plus

Voltage: 22.2 Volts

Battery Capacity: 2000 mAh (Milliamperetimme)

Estimated Runtime: Up to 60 minutes

Reusability: Rechargeable

GTIN (Global Trade Item Number): 04052926054304

ASIN: B09CTQ9NF9

WARRANTY AND SUPPORT

For warranty information and customer support, please refer to the documentation included with your original MAXXMEE Cordless Cyclone Vacuum Cleaner Plus or visit the official MAXXMEE website. Keep your proof of purchase for warranty claims.

If you encounter any issues not covered in this manual, please contact MAXXMEE customer service for assistance.

