

AMAFACE K62

AMAFACE Kids Wireless Earbuds K62 Instruction Manual

Model: K62 | Brand: AMAFACE

1. INTRODUCTION

Welcome to the instruction manual for your AMAFACE Kids Wireless Earbuds K62. These earbuds are designed to provide a comfortable and enjoyable audio experience with features tailored for children, including a unique panda-themed charging case, Bluetooth 5.1 connectivity, and intuitive touch controls. Please read this manual carefully to ensure proper use and maintenance of your device.



Figure 1: AMAFACE K62 Kids Wireless Earbuds with Panda Charging Case

2. PRODUCT OVERVIEW

2.1 Package Contents

- AMAFACE K62 Wireless Earbuds (Left and Right)
- Panda Charging Case
- USB-C Charging Cable
- Multiple Sizes of Silicone Ear Tips (S, M, L)
- User Manual

2.2 Key Features

- True Wireless Stereo (TWS) with Bluetooth 5.1
- Smart Touch Control for easy operation
- IPX5 Sweat Resistance
- Ergonomic and Lightweight Design
- Noise Reduction Technology



Figure 2: Open Panda Charging Case with Earbuds



3. SETUP

3.1 Charging the Earbuds and Case

Before first use, fully charge the earbuds and the charging case. Connect the provided USB-C charging cable to the charging port on the back of the panda case and to a compatible USB power source. The indicator lights on the case will show the charging status.



Figure 4: Charging Port on Panda Case

3.2 Pairing with a Device

1. Ensure the earbuds are charged.
2. Open the panda charging case. The earbuds will automatically power on and enter pairing mode.
3. On your device (phone, tablet, etc.), go to Bluetooth settings and enable Bluetooth.
4. Look for 'K62' in the list of available devices and select it to connect.
5. Once connected, a voice prompt will confirm successful pairing.

Video 1: This video demonstrates the automatic pairing process of the AMAFACE K62 Kids Wireless Earbuds. It shows the earbuds being removed from the panda charging case and instantly connecting to a device.

ONE STEP PAIRING

Pick up 2 Earbuds from charging Box Connect Bluetooth



Figure 5: One-Step Pairing Process

4. OPERATING INSTRUCTIONS

4.1 Smart Touch Control

The earbuds feature touch-sensitive areas for easy control of music and calls:

- **Play/Pause Music:** Tap once on either earbud.
- **Answer/End Call:** Tap once on either earbud.
- **Refuse Incoming Call:** Long press for 2 seconds on either earbud.
- **Next Track:** Long touch the Right (R) earbud for 2 seconds.
- **Previous Track:** Long touch the Left (L) earbud for 2 seconds.
- **Activate Voice Assistant:** Triple-click on either earbud.
- **Volume Adjustment:** Press and hold the Left earbud to decrease volume, press and hold the Right earbud to increase volume.

Touch To Control

Control your phone without taking it out



Long press for 2 seconds
Refuse incoming call



Three-click ("L" or "R")
Activate voice assistant



Long Touch R 2 seconds
Next track



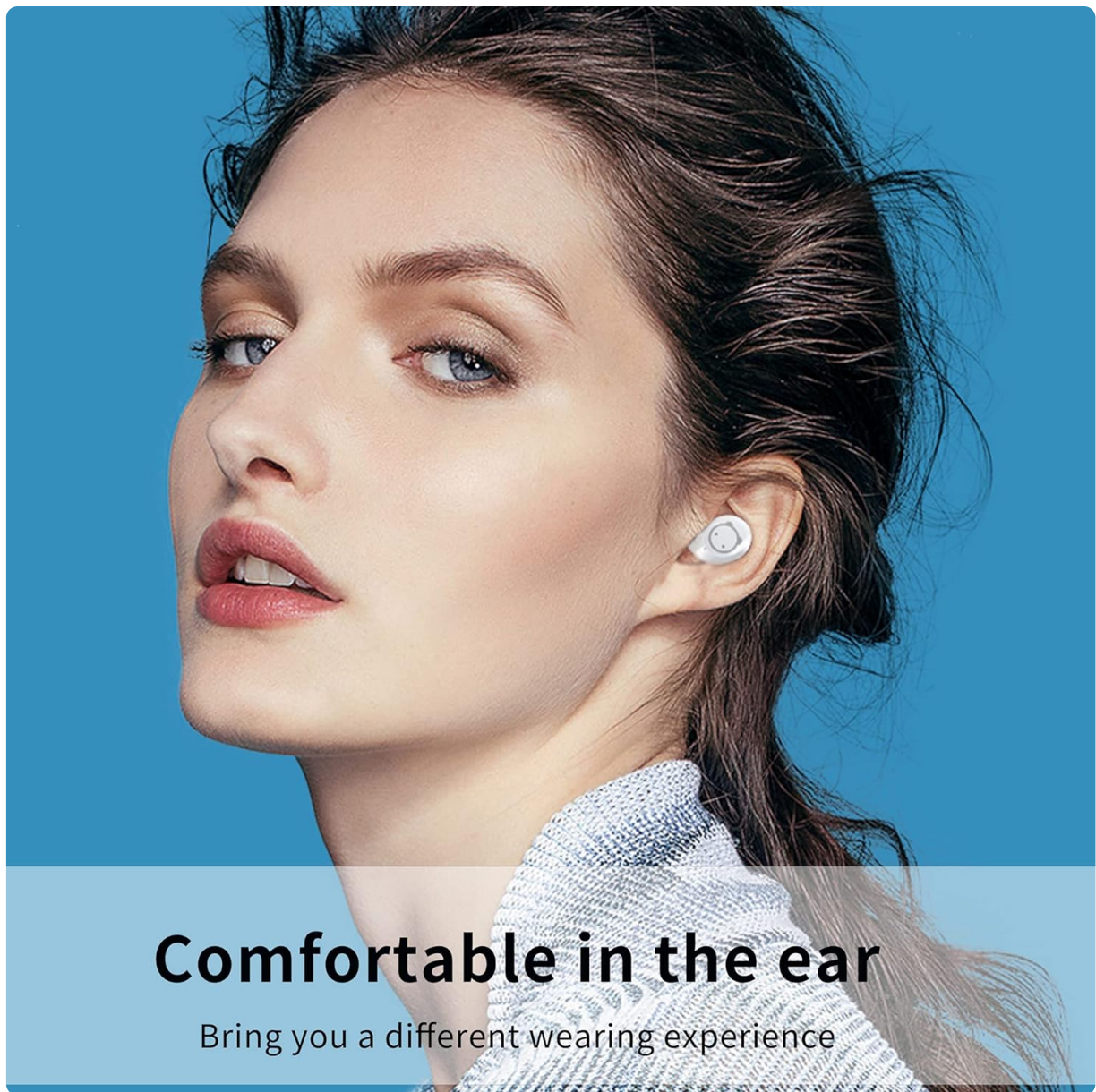
Long Touch L 2 seconds
Previous track



Figure 6: Earbud Touch Controls

4.2 Wearing the Earbuds

For optimal sound quality and comfort, choose the silicone ear tips that best fit your ears. Gently insert the earbuds into your ear canal and twist slightly to secure them.



Comfortable in the ear

Bring you a different wearing experience

Figure 7: Earbud Worn Comfortably in Ear

5. MAINTENANCE

5.1 Cleaning and Storage

- Regularly clean the earbuds and charging case with a soft, dry cloth.
- Remove ear tips and clean them with mild soap and water, then dry thoroughly before reattaching.
- Store the earbuds in their charging case when not in use to protect them and keep them charged.
- Avoid exposing the earbuds to extreme temperatures or direct sunlight.

5.2 Water Resistance

The earbuds are IPX5 sweat resistant, meaning they can withstand sweat and light splashes of water. They are not designed for submersion in water. Ensure the earbuds are dry before placing them back in the charging case.



Figure 8: IPX5 Sweat Resistant Earbuds

6. TROUBLESHOOTING

If you encounter any issues with your earbuds, please refer to the following common solutions:

- **Earbuds not pairing:** Ensure both earbuds are out of the case and in pairing mode. Turn off and on your device's Bluetooth, then try pairing again.
- **No sound from one earbud:** Place both earbuds back in the charging case, close the lid, then open it again and try reconnecting. Ensure both earbuds are charged.
- **Charging issues:** Check if the USB-C cable is securely connected to both the case and the power source. Ensure the charging contacts on the earbuds and inside the case are clean and dry.
- **Volume too low or high:** Adjust the volume using the touch controls on the earbuds or directly on your connected device. Note that these earbuds are designed with a safe volume limit for children.
- **Intermittent connection:** Ensure your device is within the Bluetooth range (up to 10 meters) and there are no significant obstacles between the earbuds and your device.

7. SPECIFICATIONS



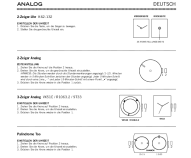

Feature	Specification
Model Name	ZY-K62
Bluetooth Version	5.1
Bluetooth Range	10 Meters
Noise Control	Active Noise Cancellation
Water Resistance Level	IPX5 (Sweat Resistant)
Control Type	Touch Control
Item Weight	0.634 ounces
Included Components	Charging Case

8. WARRANTY AND SUPPORT

For warranty information or technical support, please refer to the contact details provided with your purchase or visit the official AMAFACE website. Our customer service team is available to assist you with any questions or concerns regarding your AMAFACE Kids Wireless Earbuds K62.

Video 2: This video highlights the design and features of the AMAFACE K62 Kids Wireless Earbuds, showcasing the panda charging case and the earbuds themselves.

Related Documents - K62

 <p>Smart Bracelet User Manual</p> <p>Please also full charge before use it. APP: FitCloudPro</p>	<p>K62 Smart Bracelet User Manual: Setup, Features, and App Guide</p> <p>Comprehensive user manual for the K62 Smart Bracelet. Learn how to set up, connect to the FitCloudPro app, use features like activity tracking, health monitoring, notifications, and customize your device.</p>
	<p>SMARTY20 SW075 Smartwatch User Manual - Fast Guide</p> <p>Quick start guide for the SMARTY20 SW075 smartwatch, covering initial setup, pairing with the FitCloudPro app, and detailed explanations of watch and app functionalities.</p>
	<p>Starck Uhren Bedienungsanleitung: Analog & Digital Modelle</p> <p>Umfassende Bedienungsanleitung für Starck Analog- und Digitaluhren. Enthält Anleitungen zur Zeiteinstellung, Datum, Alarm, Chronograph und mehr für verschiedene Modelle wie K62-132, VX51E, R1063.2 und 9T33.</p>
	<p>SUNKTA Smart Watch User Manual - FitCloudPro App Guide</p> <p>Comprehensive user manual for the SUNKTA BWK65/K62 Smart Watch, detailing setup, pairing with the FitCloudPro app, smartwatch functions, app features, notifications, and watch face customization. Compatible with Android and iOS.</p>
	<p>ITOMA K62 Mini Fridge: Short Use Manual & Product Guide</p> <p>Concise user guide for the ITOMA K62 compact mini fridge. Learn about its features, operation, optimization, and safety instructions for beverages, snacks, and personal items.</p>

